

# Non-Statutory Public Consultation Notice

## Old Bawn Road Active Travel Scheme – Southern Junctions

# Project Background – Old Bawn Road Active Travel Scheme

In 2012 Part VIII Planning approval for 'Tallaght to Ballyboden Cycle Route' was granted. This included the Old Bawn Road Active Travel Scheme funded by the NTA.

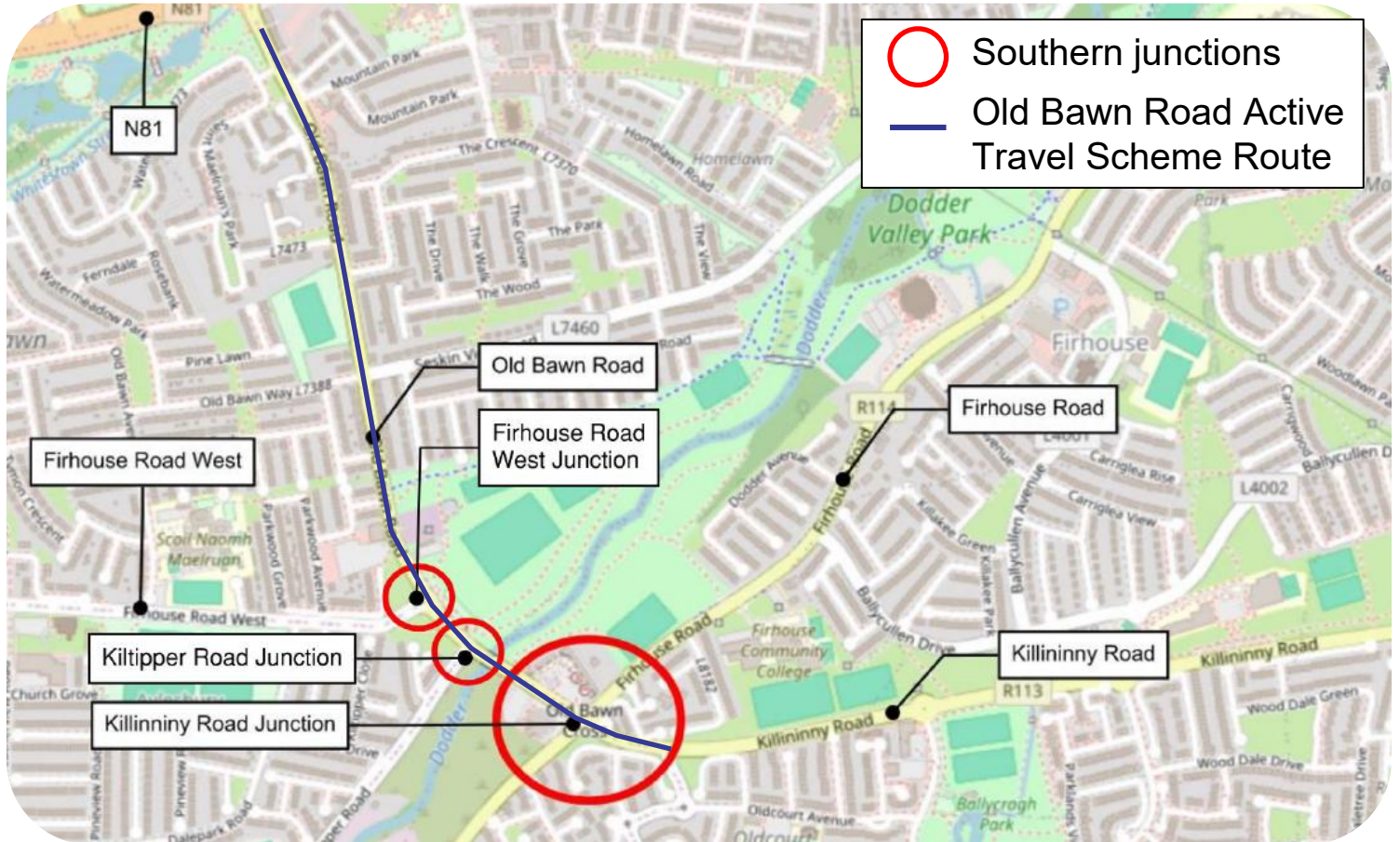
Old Bawn Road Active Travel Scheme across two Electoral Areas Firhouse - Bohernabreena and Tallaght Central.

SDCC are now undertaking Non-Statutory Public Consultation for Active Travel improvements at the southern junctions on Old Bawn Road.

**This non-statutory consultation includes Old Bawn Road 3 southern junctions only:**

- Killininy Road Junction
- Kiltipper Road Junction
- Firhouse Road West Junction

**This consultation will run from 24th June to 21st July.**



# Need for the Scheme

The scheme is part of the Active Travel corridor as adopted in Cycle South Dublin Programme.

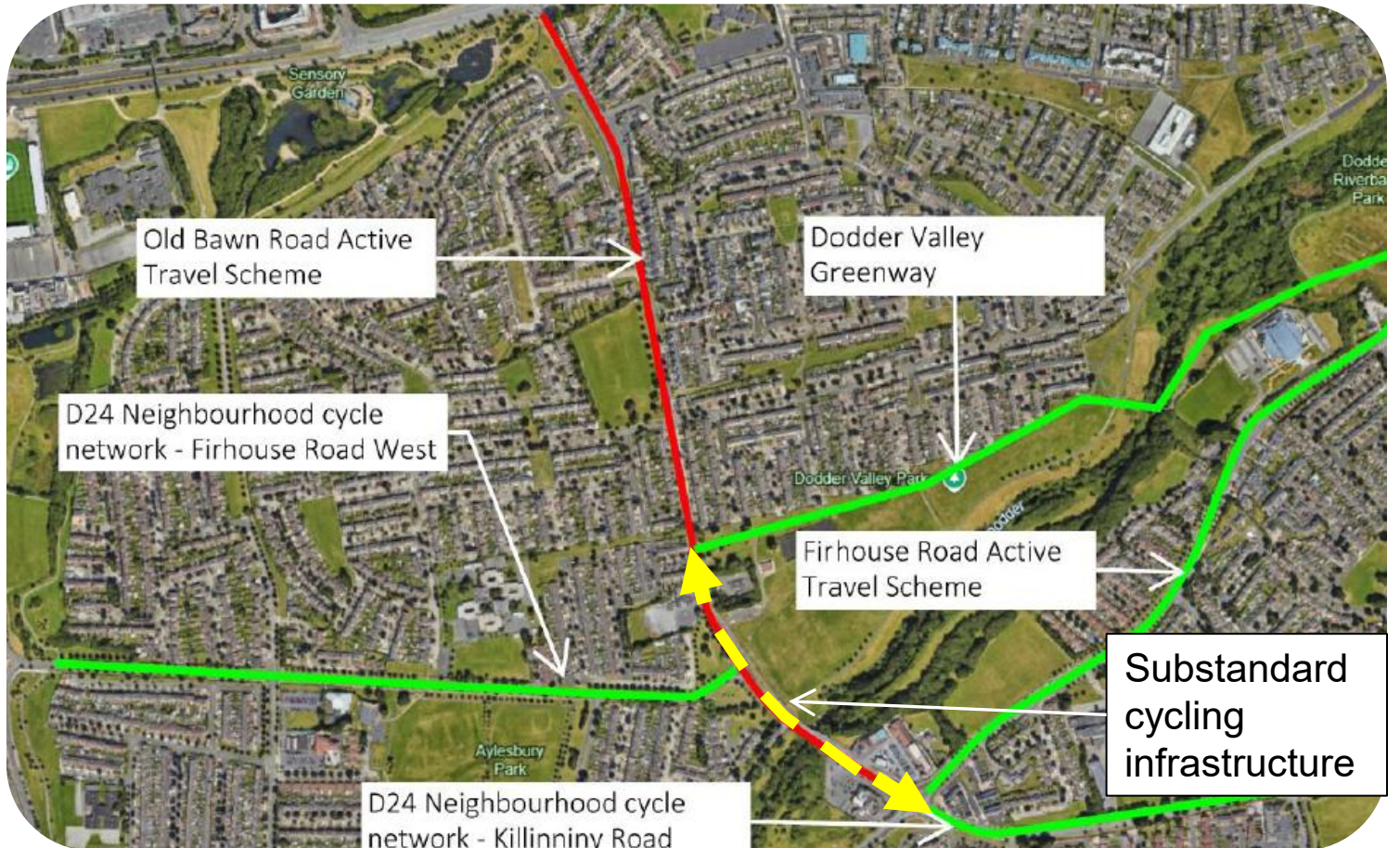
There is currently poor provision for vulnerable road users at junctions (in particular nearby schools and shopping area) and no pedestrian or cyclist crossing at Kiltipper Road junction.

The proposed reconfiguration will support modal shift required to alleviate traffic congestion, as well as the need to meet Climate Action targets

There is currently substandard pedestrian and cycle infrastructure between Dodder Valley Greenway and D24 Neighbourhood Cycle Network.

Key locations connecting adjacent schemes:

- Dodder Valley Greenway
- D24 Phase 1 - Firhouse Road West
- D24 Phase 2 - Killininy Road
- Firhouse Road Active Travel Improvement Scheme



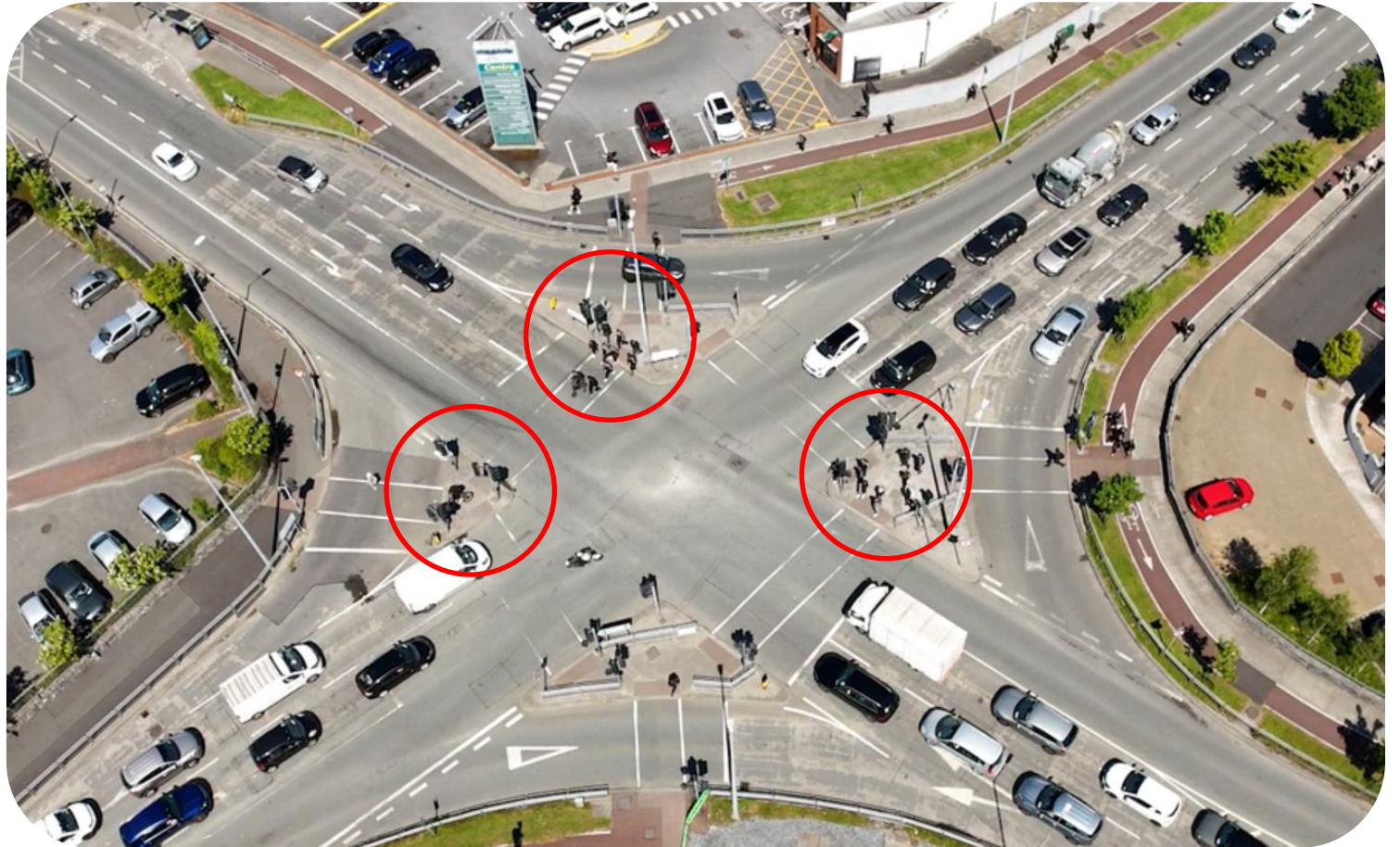
# Current Situation and Observations

SDCCs Traffic Management Centre have reported traffic islands being full with students seen standing on the road without refuge.

- > 6,400 pedestrians and cyclists counted on footpaths and cycle lanes over 24 hours (May 2025)

Surveys identified safety issues for vulnerable road users, particularly students from Firhouse Community College. The key safety issues include:

- capacity of traffic islands
- pedestrians and car conflicts, particularly at slip lanes



# RSA Collision Data 2016 - 2023

From 2016 – 2023, between Firhouse Road West and Oldcourt Road there have been:

- 4 traffic collisions with serious injuries
- 8 traffic collisions with non serious injuries

These collisions have resulted in injuries distributed across all modes i.e. drivers, cyclists and pedestrians.



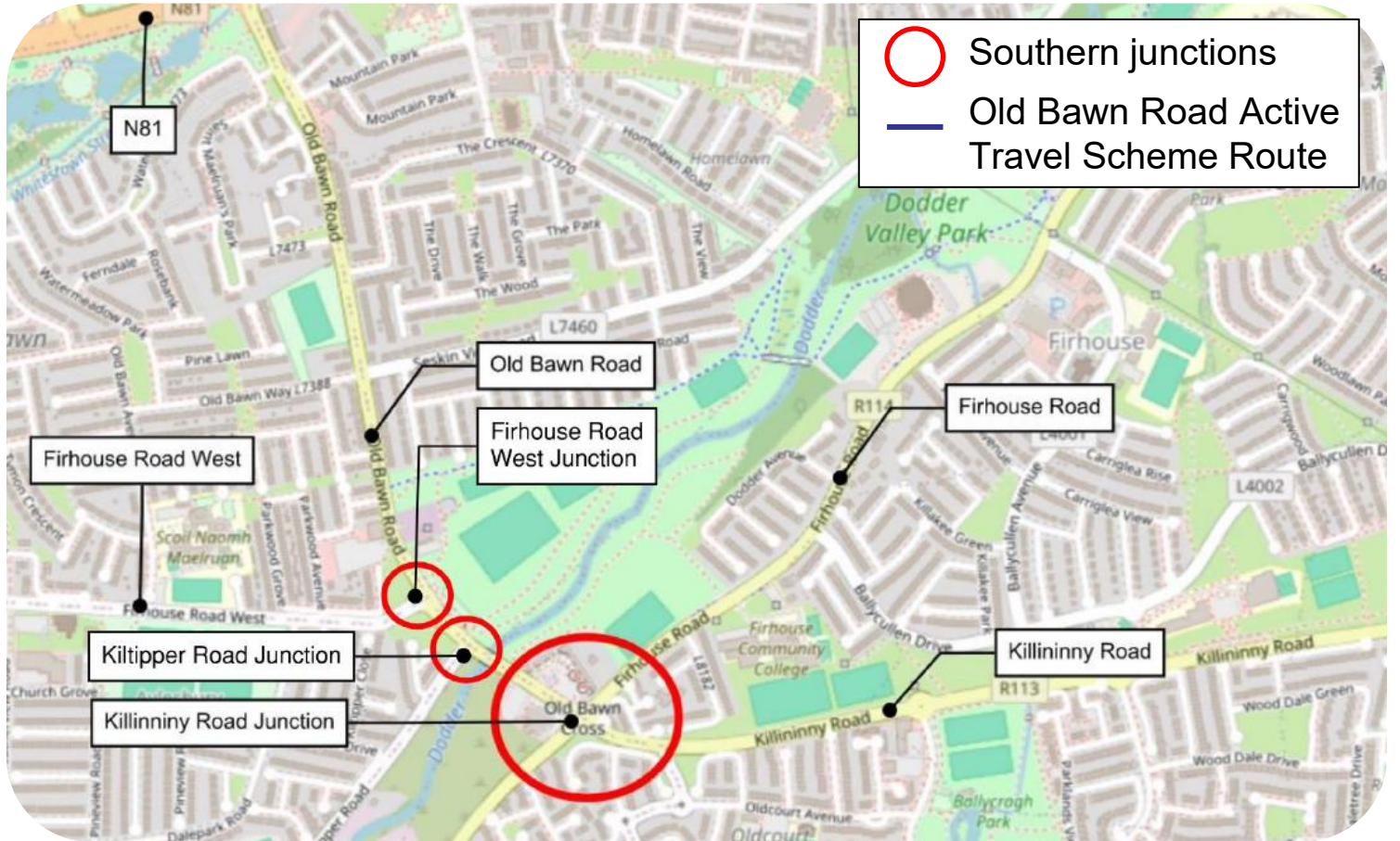
# Next Steps

Non-statutory public consultation of Old Bawn Road 3 southern junctions will run from 24<sup>th</sup> June to 21<sup>st</sup> July.

[Non-Statutory Public Consultation - Old Bawn Road Active Travel Scheme – Southern Junctions | South Dublin County Council's Online Consultation Portal](#)

Submissions will be reviewed and incorporated in the preliminary design where appropriate.

A Public Consultation for the full Old Bawn Road Active Travel Scheme will be held at a future date prior to the active travel scheme delivery.





Comhairle Contae  
Átha Cliath Theas

South Dublin  
County Council

# Thank you