

Homeless Action Plan 2025 - 2027

Overview

Presenter
Mary Hayes, Director
Dublin Region Homeless Executive





Legislation

In accordance with Section 37 of the Housing (Miscellaneous Provisions) Act 2009, each Housing Authority must prepare an Action Plan to address homelessness in the administrative areas concerned by the Housing Authorities, the Health Service Executive and other bodies providing services to address homelessness.

A Homelessness Action Plan shall specify the measures proposed to be undertaken to address homelessness in the administrative area or administrative areas concerned by the housing authorities as the case may be, the Health Service Executive, specified bodies, or approved housing bodies or other bodies providing service to address homelessness or the performance of whose functions may affect or relate to the provision of such services, including but not necessarily limited to measures to achieve the following objectives:

- (a) The prevention of homelessness
- (b) The reduction of homelessness in its extent or duration
- (c) The provision of services, including accommodation, to address the needs of homeless households
- (d) The provision of assistance under section 10(b)(i), as necessary to persons who were formerly homeless, and
- (e) The promotion of effective co-ordination of activities proposed to be undertaken by the bodies referred to in this subsection for the purposes of addressing homelessness in the administrative area or areas concerned.





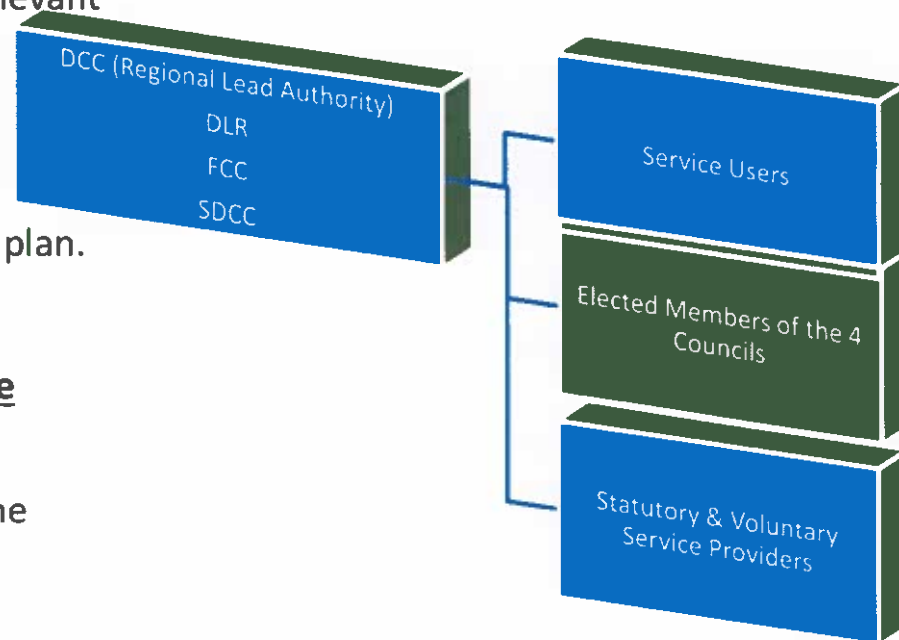
Key Stakeholders

Statutory Management Group The Management Group comprises statutory officials with primary responsibility for drawing up the Homeless Action Plan and for making recommendations to relevant statutory bodies on homeless services, including funding. (DCC/County LAs / HSE/ TUSLA)

The SMG agrees an annual business plan based on the 3 year plan.

Input and feedback comes from the Dublin Joint Consultative Forum Membership

DCC, SDCC, DLRCC, FCC, HSE, Tusla, the Homeless Network, the Irish Prison and Probation Service, CDETb and Threshold.





Breakdown of the Consultation Sessions

CES held Rapid Insight Focus Group sessions to inform the actions to be included in the next Dublin Region Homeless Action Plan.

Rapid Insight Sessions

- 12th March – 2 Sessions (NGO & Councillors)
- 13th March - 2 Sessions (NGO & Consultative Forum)
- 14th March – Councillors from 4 Dublin LAs
- 20th March - Councillors from 4 Dublin LAs
- 21st March – HSE/LA Management

Focus Group

- 16th April - Service Users

Written Submission

Each stakeholder was invited to participate in a survey to share their written feedback. The survey link was distributed on 27th March, with a submission deadline of 4th April.





High Level - Previous Homeless Action Plan

Previous Plan 2022 - 2024

- ❑ More households in Emergency Accommodation – January 2022 to December 2024, total households in emergency accommodation **increased** by 2,197 (1,511 more singles and 646 more families).
- ❑ Strong Focus on standards and service provision in EA; 350 independent inspections of Emergency Accommodation, 568 unannounced visits and 92 NQSF inspections 2022-2024 by DRHE staff + DFB Fire Safety Inspections.
- ❑ Improved health access and joint working including PEA. PACT & HSO Team
- ❑ **4,762** Preventions 2022 -2024
- ❑ **3,496** household exited emergency accommodation to tenancy

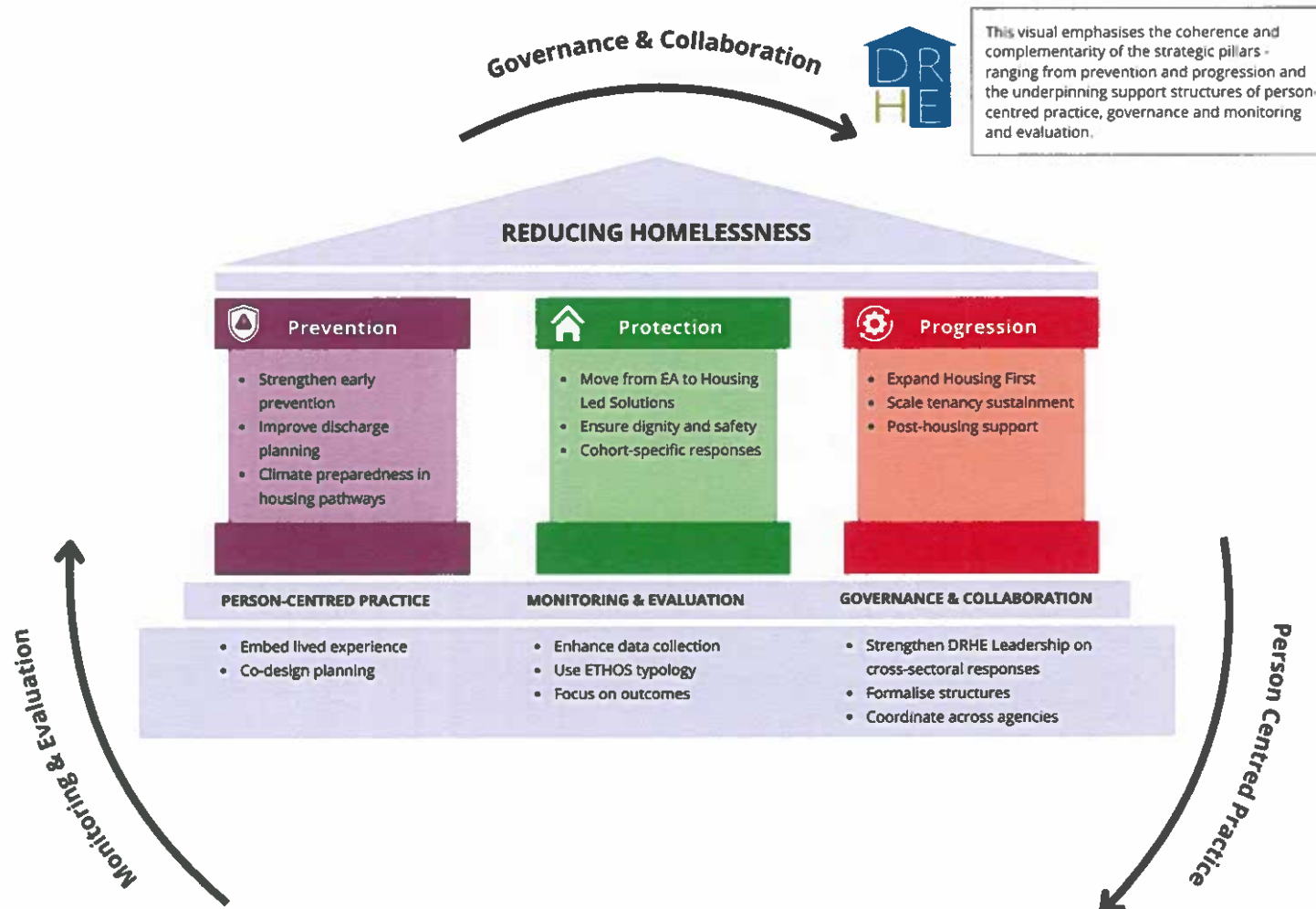




New Plan – Feedback

- Clear, specific actions that are measurable in terms of impact, target date and responsibility.
- Deciding on what's in/out:
 - Impact on Homelessness, *will it prevent homelessness or support someone to a tenancy?*
 - Is the action *achievable* by the LA/NGO/HSE/Other Statutory?
- Early Prevention,
- Stable and Supportive EA
- Sustainable Progression
- Strengthen DRHE system-wide leadership
- Person Centred
- Outcome focussed





Key Challenges/Context

Affordable Housing for People to Rent – the Homeless Action Plan can't solve this but must work within this context without getting defeated by it.

Systemic Constraints – NGO capacity strained which is affecting the scaling up of Housing First and Supported Housing.

Shift from Shelters to Housing – how to reallocate resources away from costly, short term interventions.

Structural causes but cohorts more vulnerable to homeless (needing integrated support that respects choice)

Prevention

1

Start Working Early with
High-Risk Communities

4 Actions

2

Focus on Supporting People
to Remain in their Own
Homes by Implementing
Preventative Measures

6 Actions

3

Strengthen Early Prevention
Pathways

5 Actions

Protection

1

Ending and
Preventing Rough
Sleeping

2 Actions

2

Providing Adequate
and Equitable
Emergency
Accommodation

7 Actions

3

Maintaining Quality
and Dignity in
Emergency
Accommodation

2 Action

4

Facilitating Exits from
Homelessness

2 Actions

Progression

1. Provide stable
Accommodation that
prioritises families and Rough
Sleepers by tackling chronic
homelessness

8 Actions

2. Provide Integrated and
Defined Pathways into
Sustainable Tenancies

7 Actions



Governance

Audits, NQSF, Inspections, SLAs, KPIs

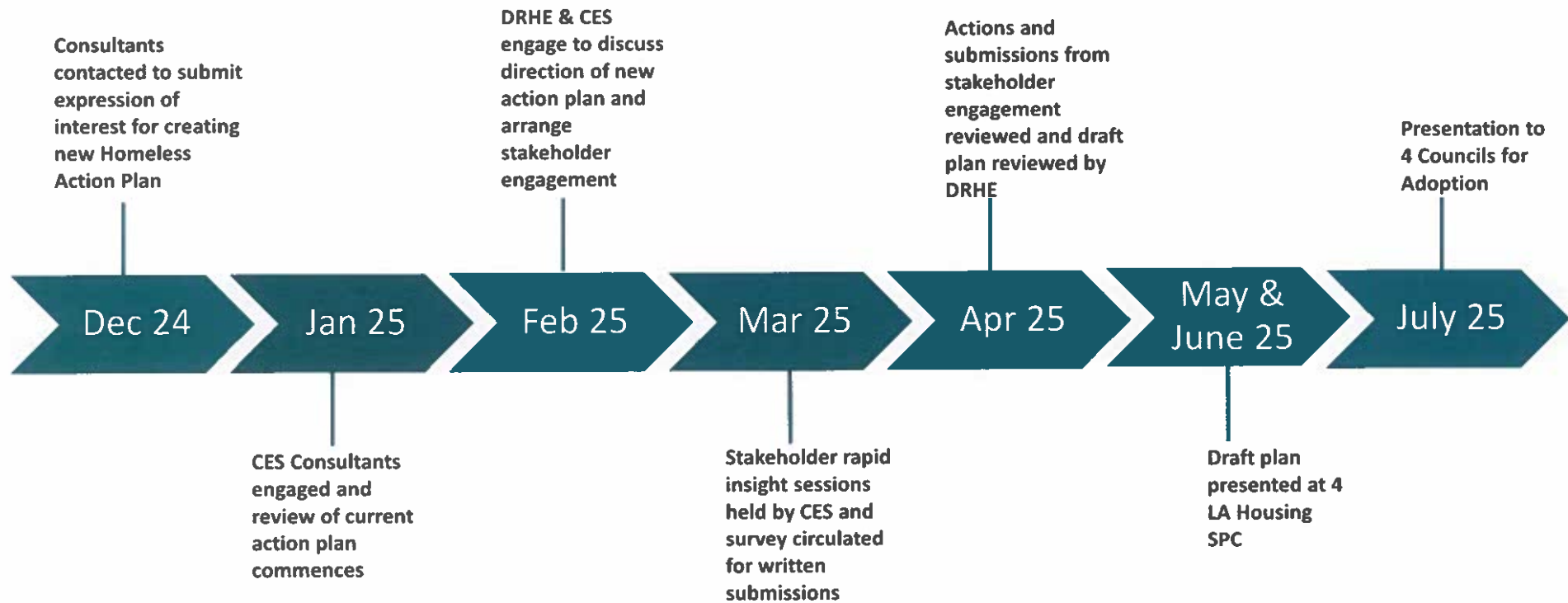
<https://www.homelessdublin.ie/trends>

SMG, DHJCF

Monthly Report

DHLGH Monthly and Quarterly Financial
and Performance Returns

Timeline





Thank you!

Any questions?

You can contact the DRHE at DRHEmanagement@dublincity.ie