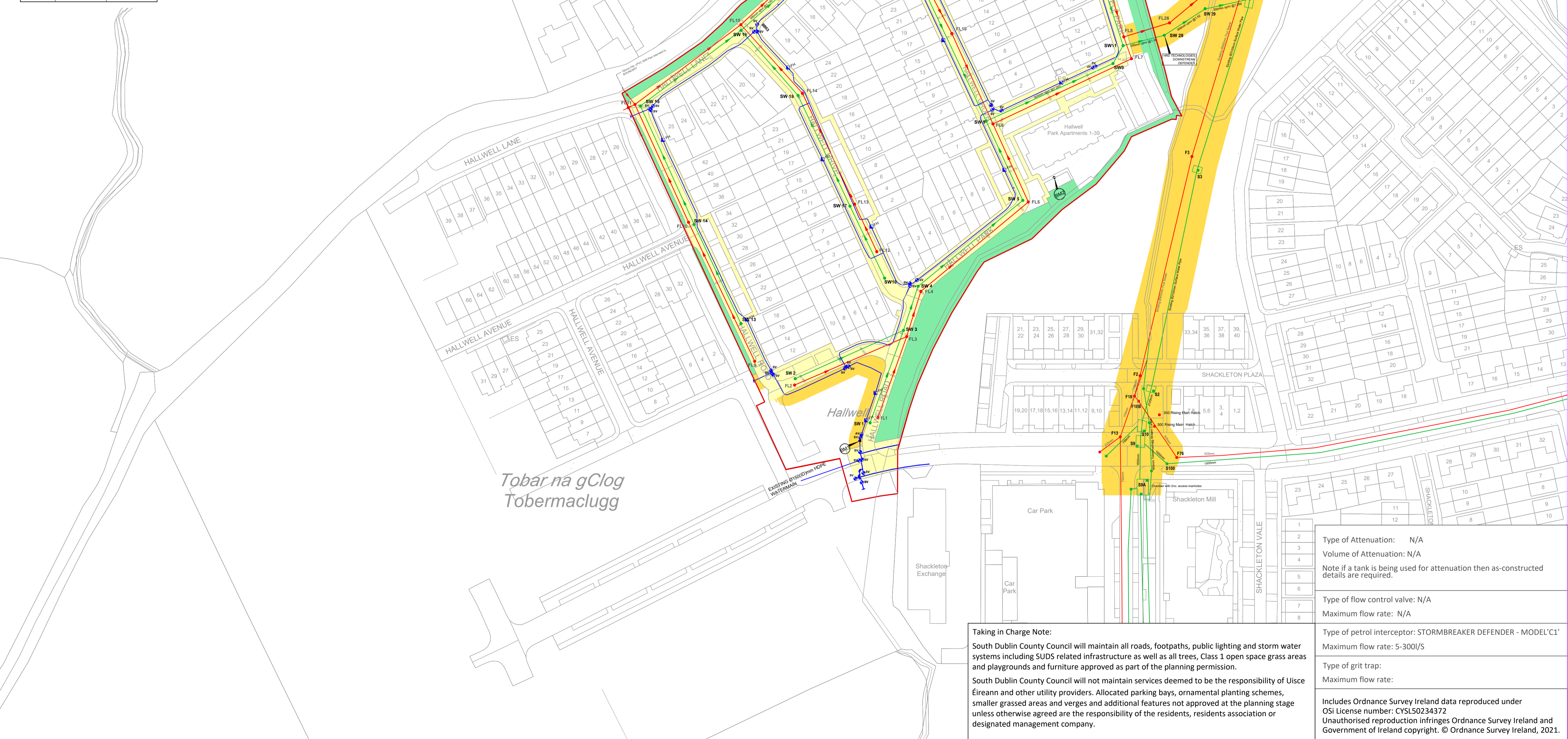


Foul Sewer						Surface Water Sewer							
Manhole No	Cover Level	Invert Level	Backstop	Pipe Size	Heading	Manhole No	Cover Level	Invert Level	Backstop	Pipe Size	Heading		
F1	46.757	45.307	n/a	225mm	T01552.964	F34001.368	SW1	46.735	45.035	n/a	225mm	T01559.405	F33998.519
F2	45.999	45.399	n/a	225mm	T01474.750	F34002.369	SW2	46.984	45.034	n/a	225mm	T01475.114	F34003.203
F3	45.839	45.059	n/a	225mm	T01536.166	F34008.473	SW3	46.663	44.643	n/a	225mm	T01524.722	F34043.317
F4	46.466	44.916	n/a	225mm	T01532.623	F34009.197	SW4	46.414	44.414	n/a	225mm	T01531.483	F34061.513
F5	45.467	43.967	n/a	225mm	T01581.976	F34010.166	SW5	45.401	43.501	n/a	225mm	T01579.429	F34100.936
F6	44.964	43.434	n/a	225mm	T01565.741	F34135.049	SW6	45.415	43.665	n/a	225mm	T01518.094	F34218.624
F7	44.163	42.763	n/a	225mm	T01629.290	F34165.829	SW7	44.936	43.536	n/a	225mm	T01531.311	F34203.463
F8	44.157	42.067	n/a	225mm	T01625.776	F34175.848	SW8	44.914	42.814	n/a	225mm	T01562.680	F34317.228
F9	46.795	45.165	n/a	225mm	T01456.451	F34027.169	SW9	44.277	41.791	42.477	225mm	T01620.873	F34363.643
F10	46.015	44.705	n/a	225mm	T01426.114	F34090.879	SW10	43.755	42.350	n/a	225mm	T01706.156	F34346.284
F11	45.427	44.397	n/a	225mm	T01401.540	F34144.825	SW11	44.193	41.753	n/a	300mm	T01625.445	F34371.823
F12	46.242	44.792	n/a	225mm	T01513.440	F34077.414	SW12	46.766	45.165	n/a	300mm	T01477.832	F33989.932
F13	46.073	44.623	n/a	225mm	T01503.280	F34099.183	SW13	46.510	44.769	n/a	300mm	T01450.136	F34044.594
F14	46.203	44.273	n/a	225mm	T01478.353	F34150.035	SW14	46.427	44.398	n/a	300mm	T01428.729	F34069.876
F15	45.966	43.986	n/a	225mm	T01450.112	F34181.443	SW15	46.466	44.086	n/a	300mm	T01404.115	F34343.911
F16	45.771	43.871	n/a	225mm	T01468.750	F34198.601	SW16	46.303	44.943	n/a	300mm	T01516.100	F34065.226
F17	45.511	43.671	n/a	225mm	T01482.154	F34215.556	SW17	46.053	44.673	n/a	300mm	T01500.162	F34098.258
F18	45.210	43.310	n/a	225mm	T01532.462	F34204.733	SW18	46.204	44.404	n/a	300mm	T01476.335	F34348.991
F19	45.243	43.793	n/a	225mm	T01546.860	F34177.412	SW19	46.002	43.642	n/a	300mm	T01450.224	F34378.812
F20	45.273	43.513	n/a	225mm	T01504.940	F34225.224	SW20	45.741	43.441	n/a	300mm	T01470.470	F34356.769
F21	45.054	43.284	n/a	225mm	T01512.260	F34248.468	SW21	45.558	43.308	n/a	300mm	T01484.188	F34214.167
F22	44.375	42.945	n/a	225mm	T01585.585	F34280.472	SW22	45.225	43.335	n/a	300mm	T01505.119	F34233.143
F23	44.272	42.832	n/a	225mm	T01593.791	F34278.240	SW23	45.077	42.887	n/a	300mm	T01523.644	F34246.976
F24	44.000	43.520	n/a	225mm	T01611.734	F34237.277	SW24	44.227	42.527	n/a	300mm	T01585.269	F34278.264
F25	43.846	43.356	n/a	225mm	T01612.241	F34222.318	SW25	44.301	42.471	n/a	300mm	T01592.108	F34275.915
F26	43.270	40.270	41.170	225mm	T01446.730	F34182.768	SW26	44.007	42.127	n/a	300mm	T01609.107	F34238.222
F27	41.466	38.716	n/a	225mm	T01666.034	F34198.245	SW27	43.838	41.968	n/a	300mm	T01609.685	F34200.123
							SW28	43.242	39.642	41.142	300mm	T01647.474	F34379.744
							SW29	41.741	39.291	n/a	300mm	T01663.046	F34388.687
							SW30	41.600	39.175	n/a	300mm	T01683.579	F34393.741

Trunk Sewer Levels			FOUL SEWER			SURFACE WATER SEWER		
MH No	Cover Level	Invert Level	MH No	Cover Level	Invert Level	MH No	Cover Level	Invert Level
F1	38.602	39.367	S2	45.900	38.121			
F2	45.892	39.367	F2	42.764	37.624			
F2.4	38.983	34.383	S4	41.275	37.307			
F3	42.184	38.599	S5	39.447	33.470			
F4	40.722	37.262	S6	37.739	33.267			
F5	39.363	34.444	S9	45.500	39.601			
F6	37.878	33.655	S9A	45.890	41.335			
F13	45.728	40.704	S10	45.809	38.271			
F18	45.826	39.400	S100	45.709	40.821			
F18B	45.846	40.307						
F76	45.813	40.968						



Director: **Mick Mulhern**
 Senior Engineer: **John Hegarty**

LEGEND:

- Foul Sewer: Red line with red dots
- Surface Water Sewer: Green line with green dots
- Watermain: Blue line with blue dots
- Fire Hydrant: Blue circle with 'FH'
- Air Valve: Blue circle with 'AV'
- Watermains Not for TIC: Grey line with grey dots
- Foul Water Not for TIC: Grey line with grey dots
- Surface Water Not for TIC: Grey line with grey dots
- Site Boundary: Red line
- Open Space: Green fill
- Roads and Footpaths to be TIC: Yellow fill
- Wayleaves: Yellow fill

0 40 80 Meters

Revision	Description	Date

Notes:
 This drawing does not constitute a recommendation to have an estate taken in charge.
 This drawing refers to the taking into charge of the roads and services as indicated in colour.
 All sewers are 225mm dia. unless otherwise indicated.
 Scaled dimensions not to be used.
 Length of roads as on attached road schedule.
 Boundary treatments to roads taken in charge i.e. walls and/or railings are not included in, and are not part of the taking in charge procedure.

Location:
HALLWELL ADAMSTOWN, LUCAN CO. DUBLIN

Drawing Title:
As Constructed Survey for Water Services

Drawn by: PL	O.S. Reference: 3260 A, 3260-8
Surveyed by: Michael Stafford Surveys	Scale: 1:1000
Checked:	Date: 13/05/2024

Drawing Number:
BC 1475

Taking in Charge Note:
 South Dublin County Council will maintain all roads, footpaths, public lighting and storm water systems including SUDS related infrastructure as well as all trees, Class 1 open space grass areas and playgrounds and furniture approved as part of the planning permission.
 South Dublin County Council will not maintain services deemed to be the responsibility of Uisce Éireann and other utility providers. Allocated parking bays, ornamental planting schemes, smaller grassed areas and verges and additional features not approved at the planning stage unless otherwise agreed are the responsibility of the residents, residents association or designated management company.

Type of Attenuation: N/A
 Volume of Attenuation: N/A
 Note if a tank is being used for attenuation then as-constructed details are required.
 Type of flow control valve: N/A
 Maximum flow rate: N/A
 Type of petrol interceptor: STORMBREAKER DEFENDER - MODEL 'C1'
 Maximum flow rate: 5-300l/s
 Type of grit trap:
 Maximum flow rate:
 Includes Ordnance Survey Ireland data reproduced under OSI License number: CYSL50234372
 Unauthorised reproduction infringes Ordnance Survey Ireland and Government of Ireland copyright. © Ordnance Survey Ireland, 2021.