

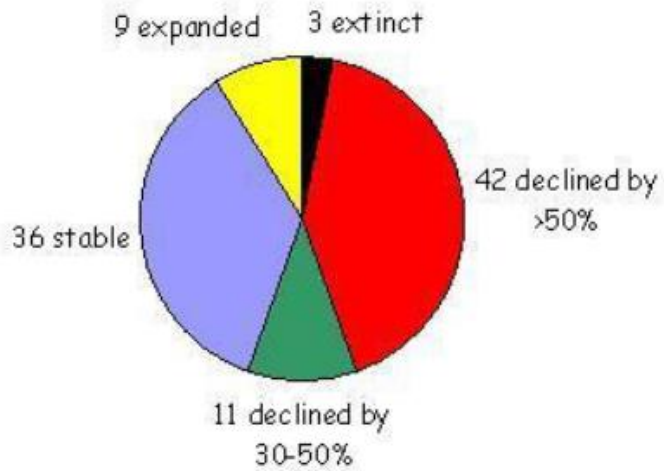


SDCC POLLINATOR ACTION PLAN UPDATE 2023

BRENDAN REDMOND

A/ SENIOR EXECUTIVE LANDSCAPE OFFICER

Rationale for SDCC Pollinator Action Plan



More than half of Ireland's bee species have undergone substantial declines in their numbers since 1980.

Two species have become extinct

One third of our 98 bee species are threatened with extinction from Ireland

6 species are critically endangered,
10 endangered
14 vulnerable



Why are Pollinators Declining?



Bees are declining because we've drastically reduced the areas where they can nest and the amount of food our landscape provides for them.

We've also inadvertently introduced pests and diseases that negatively impact their health, and we subject them to levels of pesticides that make it difficult for them to complete their life cycles.



HABITAT LOSS: HOMELESSNESS

GENERAL DECLINE IN WILDFLOWERS: HUNGER

PESTS AND DISEASE: SICKNESS

PESTICIDES: POISONING

CLIMATE CHANGE: CHANGING ENVIRONMENT

The Key Milestones to Date....



Biodiversity Surveys –
2015/16/17



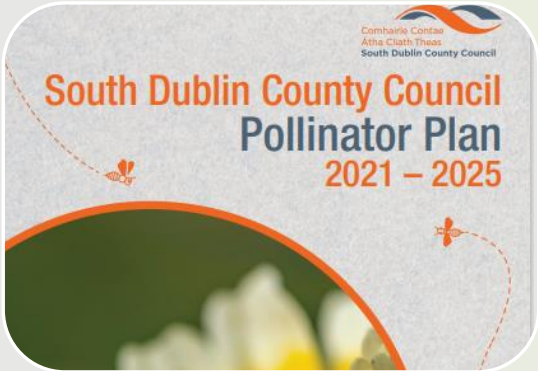
2016- 2018
Pilot project allowing
meadows to grow



2019 – GIS Mapping
Began



2019 – SDCC signed up to
All Ireland Pollinator Plan



Launch of SDCC Pollinator
Action Plan 2021-2025



2020 & 2023 - Framework
set up for meadow
mowing cut and collected



In 2022 SDCC launched a
trial on short flowering
meadows



Tymon Park Won the
Pollinator Award in
2022/23

2022 Highlights....



Increased meadows to 160ha



Short Flowering Meadows we highly popular with residents



Cut meadows to increase wildflowers



Year on year more wildflowers - pyramid orchids



Created space for people & wildlife.



SDCC planted over 3m bulbs (pollinator mix)



Pollinator urban planting upgrades continue



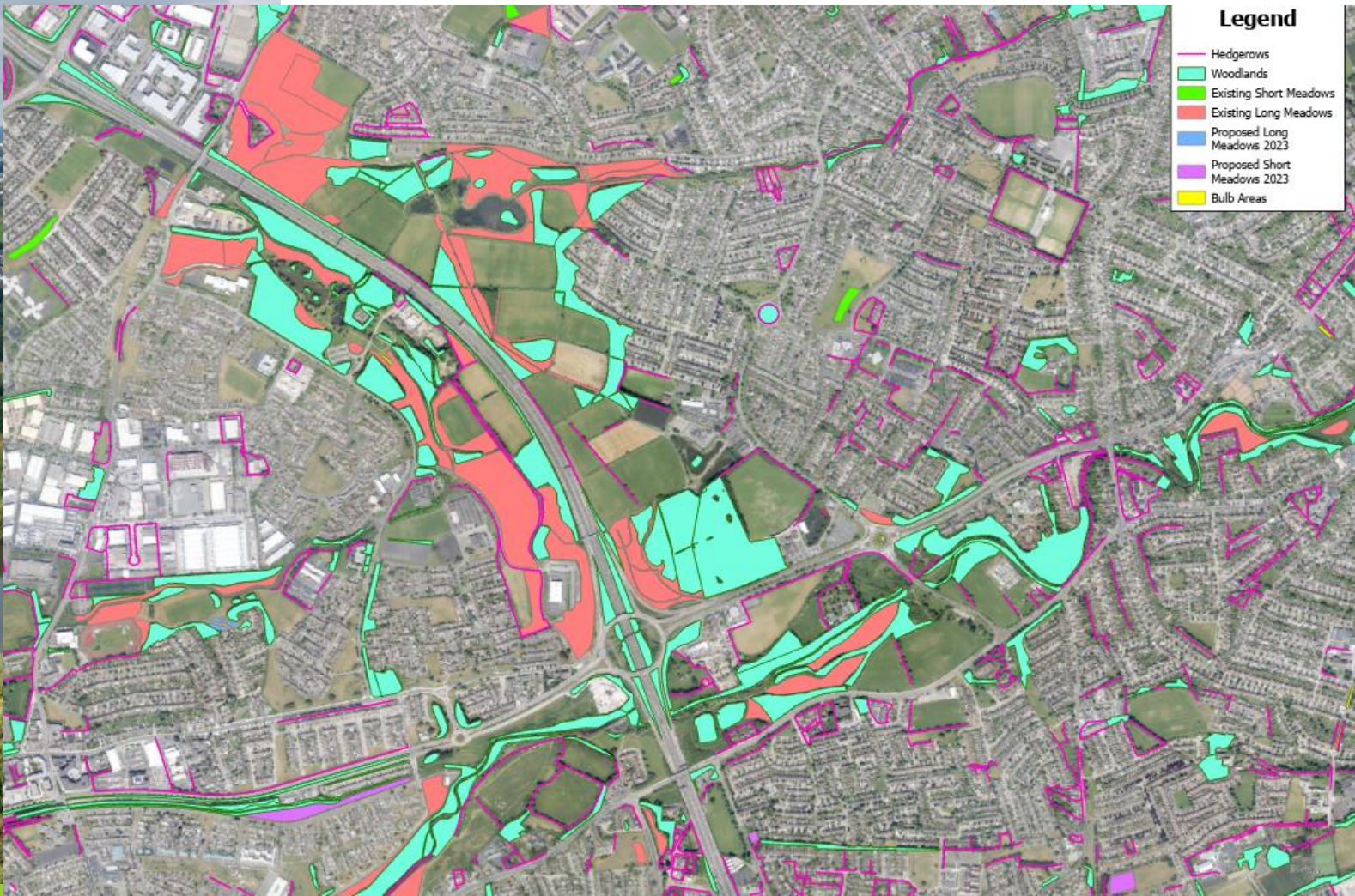
Implemented SDCC Pollinator Action Plan 2021-2025



Continued our communication Strategy on Social Media



Inclusion of All Ireland & SDCC Pollinator Plan in Corporate Plan, County Development Plan, Green Infrastructure Plan and other Council Strategies



SDCC Green Connection...

Lessons Learned

- Feedback from Councillors and general public is very good, requests for further pollinator initiative locally.
- Training/education videos being developed for community groups and staff
- Mowing a maintenance strip around meadows keep meadow tidy with signage
- Management of the meadows is mimicking traditional farming practices



2023 - Two types of meadow - **Long Meadow**

- More suitable to parks and large public open spaces
- In 2023 Public Realm will expand the meadowland area to 165 ha.
- Ensuring best practice as outlined by the All Ireland Pollinator Plan
- Ongoing surveying and monitoring through the Heritage Officer and external consultants
- Further permanent signs to be added to locations year on year



2023 - Two types of meadow - **Short Meadow**



- More suitable to smaller public open spaces and residential estates.
- A County wide alternative cut of 20 ha.
- Short meadow to grow for approx. 6 - 8 weeks between alternative cutting and collecting.
- Objective of All Ireland Pollinator Plan to have short meadows.
- An environmentally enhancing way of managing public open space
- 2m maintenance strip/frame mown around the outside so that people are aware that maintenance is still occurring

Long & Short Meadows



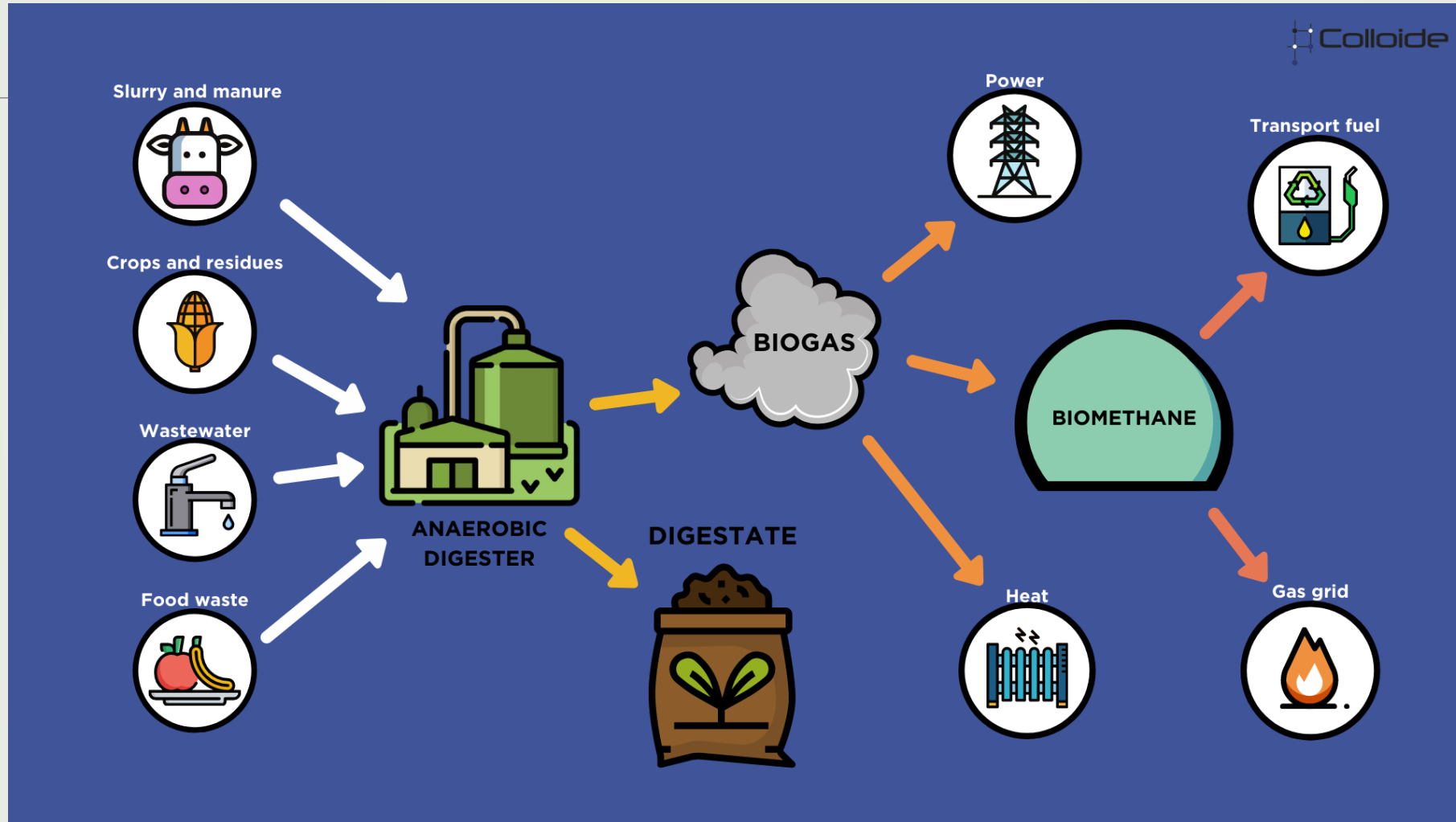
Meadow grass cuttings must be cut, collected and taken away – this gradually lowers soil fertility and gives wildflowers in the soil a chance to grow

Life cycle of our meadows

- **Springtime:** half of the meadows are cut leaving the other half over the winter to provide additional habitats and food sources for pollinators.
- **Summer:** the meadows are in full bloom where we see the peak of pollinator activities.
- **Autumn:** we allow the wildflowers to seed before half the meadows are cut and collected.
- **Winter:** the cuttings from the South Dublin County meadows are used as feed for local animals to get them through the colder months.



Looking to the future...Anaerobic Digestion Feasibility (AD)...



Public Realm & the Heritage Office would like to invite you a pollinator meadow walk in Tymon Park – June (exact date and time TBC).



Any Questions? 😊

Brendan Redmond – A/ Senior Executive Parks Superintendent - E: bredmond@sdblincoco.ie



Orchids in Waterstown Park



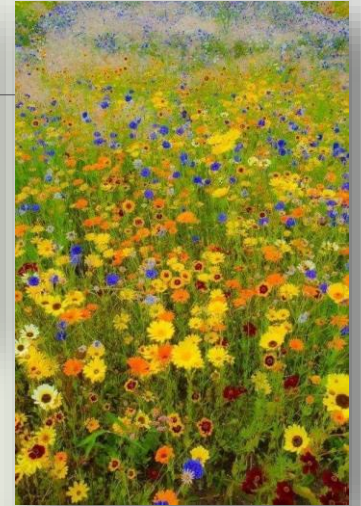
Grange Rd, Wildflower Meadow



Meadow grassland verge, Waterstown Park



Wildflower Meadow Corkagh Park



Tymon Park Playground – Wildflowers



Bee Orchid



Tymon Park Playground – grass/weeds let grow multifunctional



Local farmer removes vegetation for fodder