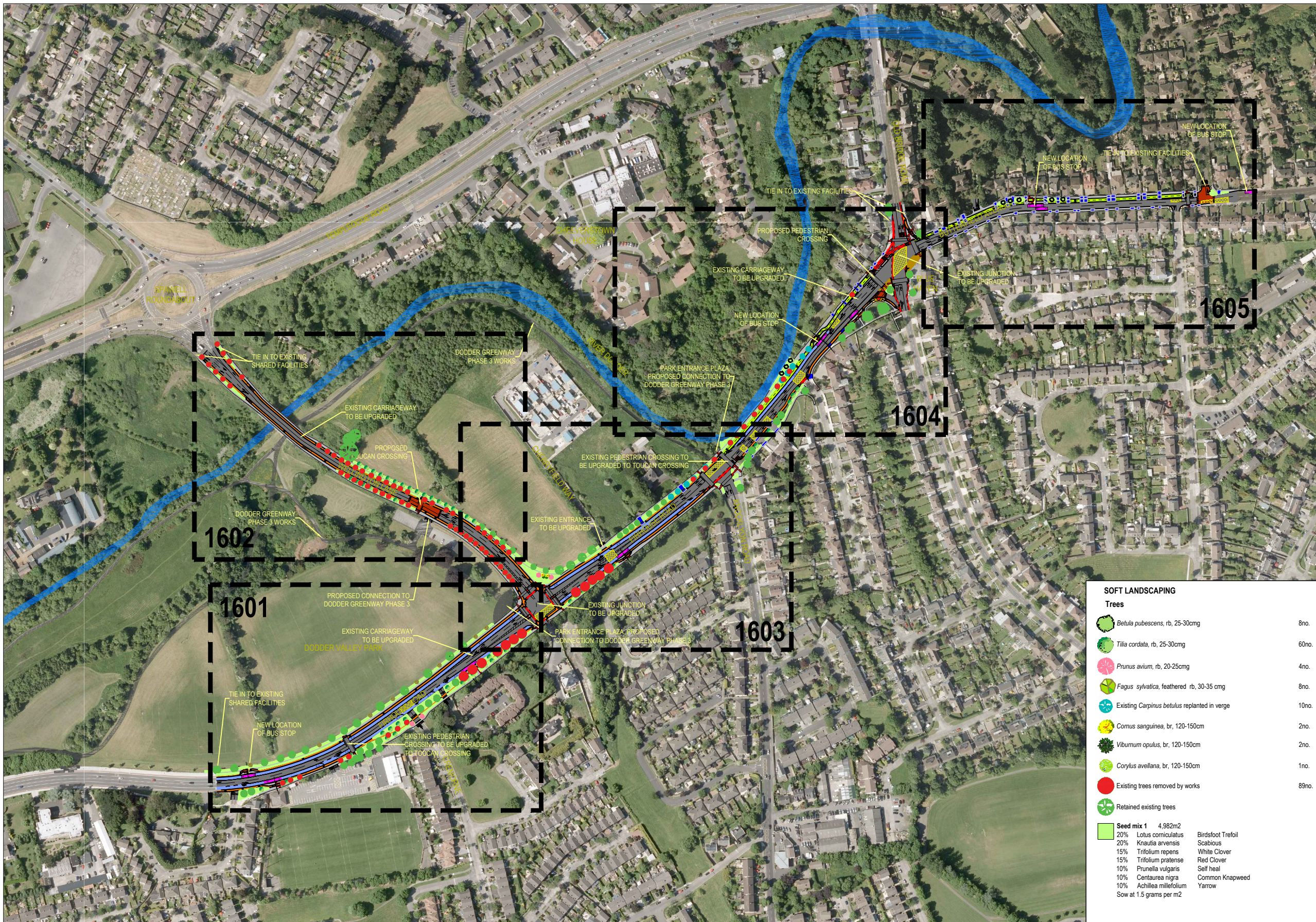


DODDER GREENWAY - PHASE 5

PART 8

DRAWING IS PRODUCED USING THE IRISH TRANSVERSE MERCATOR (ITM) GEOGRAPHIC COORDINATE SYSTEM

A1



LEGEND:

- PROPOSED RED COLOURED SURFACING
- PROPOSED RAISED OFF ROAD CYCLETRACK
- PROPOSED TWO WAY CYCLE PATH
- PROPOSED CARRIAGEWAY UPGRADE
- PROPOSED BUS LANE
- PROPOSED BUS STOP
- PROPOSED CONCRETE FOOTPATH
- EXISTING FOOTPATH
- PROPOSED SHARED SURFACE
- PROPOSED RAMP
- PROPOSED PROPERTY ACCESS
- PROPOSED GRASS VERGE / LOW LEVEL PLANTING
- PROPOSED TACTILE PAVING (RED)
- PROPOSED TACTILE PAVING (BUFF)
- PROPOSED SEGREGATED SHARED CYCLE TRACK - FOOTWAY TACTILE PAVING (BUFF)

SOFT LANDSCAPING

Trees

<i>Betula pubescens</i> , rb, 25-30cm	8no.
<i>Tilia cordata</i> , rb, 25-30cm	60no.
<i>Prunus avium</i> , rb, 20-25cm	4no.
<i>Fagus sylvatica</i> , feathered rb, 30-35 cm	8no.
Existing <i>Carpinus betulus</i> replanted in verge	10no.
<i>Cornus sanguinea</i> , br, 120-150cm	2no.
<i>Viburnum opulus</i> , br, 120-150cm	2no.
<i>Corylus avellana</i> , br, 120-150cm	1no.
Existing trees removed by works	89no.
Retained existing trees	

Seed mix 1 4,982m ²	
20% <i>Lotus corniculatus</i>	Birdsfoot Trefoil
20% <i>Knautia arvensis</i>	Scabious
15% <i>Trifolium repens</i>	White Clover
15% <i>Trifolium pratense</i>	Red Clover
10% <i>Prunella vulgaris</i>	Self heal
10% <i>Centaurea nigra</i>	Common Knapweed
10% <i>Achillea millefolium</i>	Yarrow
Sow at 1.5 grams per m ²	

P02	SUBMISSIONS RESPONSE	KT	DRL	30/09/22
P01	PART 8 PLANNING	KT	DRL	04/07/22
Rev	Description	Drawn	Checked	Date

Clifton Scannell Emerson
Associates

Clifton Scannell Emerson
Associates Limited
Consulting Engineers
Mentec House (1st Floor),
Bakers Point, Pottery Road
Dun Laoghaire, Co. Dublin,
Ireland, A96 K6P3
T: +353 1 288 5006
F: +353 1 283 3466
E: info@csea.ie
W: www.csea.ie

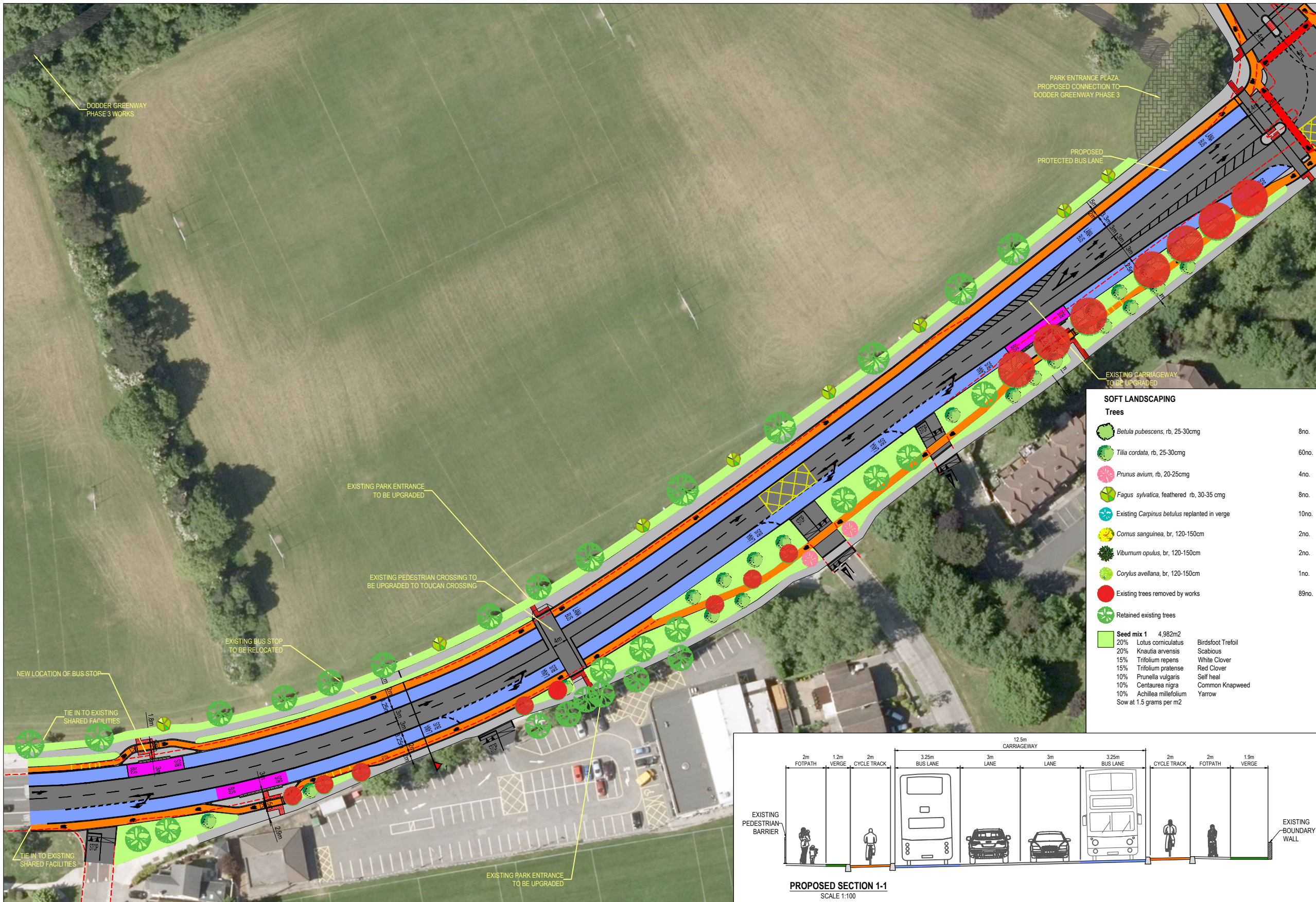
Client	SOUTH DUBLIN COUNTY COUNCIL			
Project	DODDER GREENWAY PHASE 5 PART 8 LAYOUT OVERALL			
Dwg. Title	18_123D			
Drawn By	KT	Date	MAR. 2022	
Checked By	DRL	Scale	1:2000 @ A1	
Project Code	Originator	Zone/Phase	Level	Type
18_123D - CSE - GEN - XX - DR - C - 1600				
S2	FOR INFORMATION			
Status Code	Suitability Description			
P02	PLANNING			
Revision	Project Status			

DODDER GREENWAY - PHASE 5

PART 8

DRAWING IS PRODUCED USING THE IRISH TRANSVERSE MERCATOR (ITM) GEOGRAPHIC COORDINATE SYSTEM

A1



SOFT LANDSCAPING

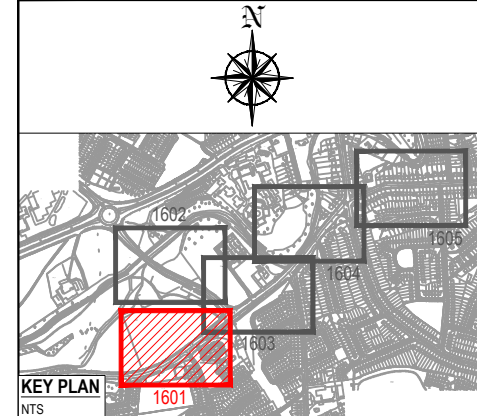
Trees

	<i>Betula pubescens</i> , rb, 25-30cmg	8no.
	<i>Tilia cordata</i> , rb, 25-30cmg	60no.
	<i>Prunus avium</i> , rb, 20-25cmg	4no.
	<i>Fagus sylvatica</i> , feathered rb, 30-35 cmg	8no.
	Existing <i>Carpinus betulus</i> replanted in verge	10no.
	<i>Cornus sanguinea</i> , br, 120-150cm	2no.
	<i>Viburnum opulus</i> , br, 120-150cm	2no.
	<i>Corylus avellana</i> , br, 120-150cm	1no.
	Existing trees removed by works	89no.
	Retained existing trees	

Seed mix 1 4,982m²

20%	<i>Lotus corniculatus</i>	Birdsfoot/Trefoil
20%	<i>Knautia arvensis</i>	Scabious
15%	<i>Trifolium arvense</i>	White Clover
15%	<i>Trifolium pratense</i>	Red Clover
10%	<i>Prunella vulgaris</i>	Self heal
10%	<i>Centaurea nigra</i>	Common Knapweed
10%	<i>Achillea millefolium</i>	Yarrow

Sow at 1.5 grams per m²



KEY PLAN

NTS

LEGEND:

	PROPOSED RED COLOURED SURFACING
	PROPOSED RAISED OFF ROAD CYCLETRACK
	PROPOSED TWO WAY CYCLE PATH
	PROPOSED CARRIAGEWAY UPGRADE
	PROPOSED BUS LANE
	PROPOSED BUS STOP
	PROPOSED CONCRETE FOOTPATH
	EXISTING FOOTPATH
	PROPOSED SHARED SURFACE
	PROPOSED RAMP
	PROPOSED PROPERTY ACCESS
	PROPOSED GRASS VERGE / LOW LEVEL PLANTING
	PROPOSED TACTILE PAVING (RED)
	PROPOSED TACTILE PAVING (BUFF)
	PROPOSED SEGREGATED SHARED CYCLE TRACK - FOOTWAY TACTILE PAVING (BUFF)
	EXISTING KERB

P02	SUBMISSIONS RESPONSE	KT	DRL	30/09/22
P01	PART 8 PLANNING	KT	DRL	04/07/22
Rev	Description	Drawn	Checked	Date

Clifton Scannell Emerson
Associates

Clifton Scannell Emerson
Associates Limited
Consulting Engineers
Merrett House (1st Floor),
Bakers Point, Pottery Road
Dun Laoghaire, Co. Dublin,
Ireland, A96 K6P3
T: +353 1 288 6006
F: +353 1 283 3466
E: info@csea.ie
W: www.csea.ie

SOUTH DUBLIN COUNTY COUNCIL

Client

DODDER GREENWAY PHASE 5

Project

PART 8 LAYOUT SHEET 1 OF 5

Dwg. Title

Drawn By: KT Date: MAR. 2022 18_123D

Checked By: DRL Scale: 1:500 @ A1 CSEA Job No.

Project Code	Originator	Zone/Phase	Level	Type	Role	Dwg. No.
18_123D	CSE	GEN	XX	DR	C	1601

S2 FOR INFORMATION

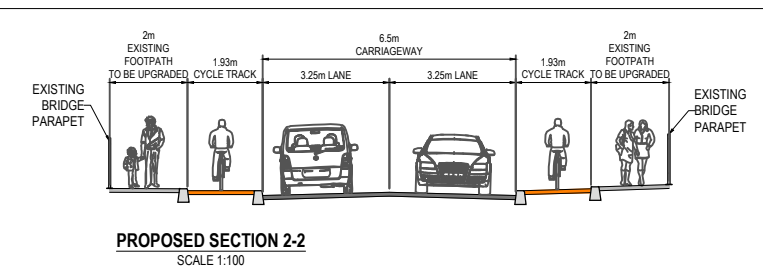
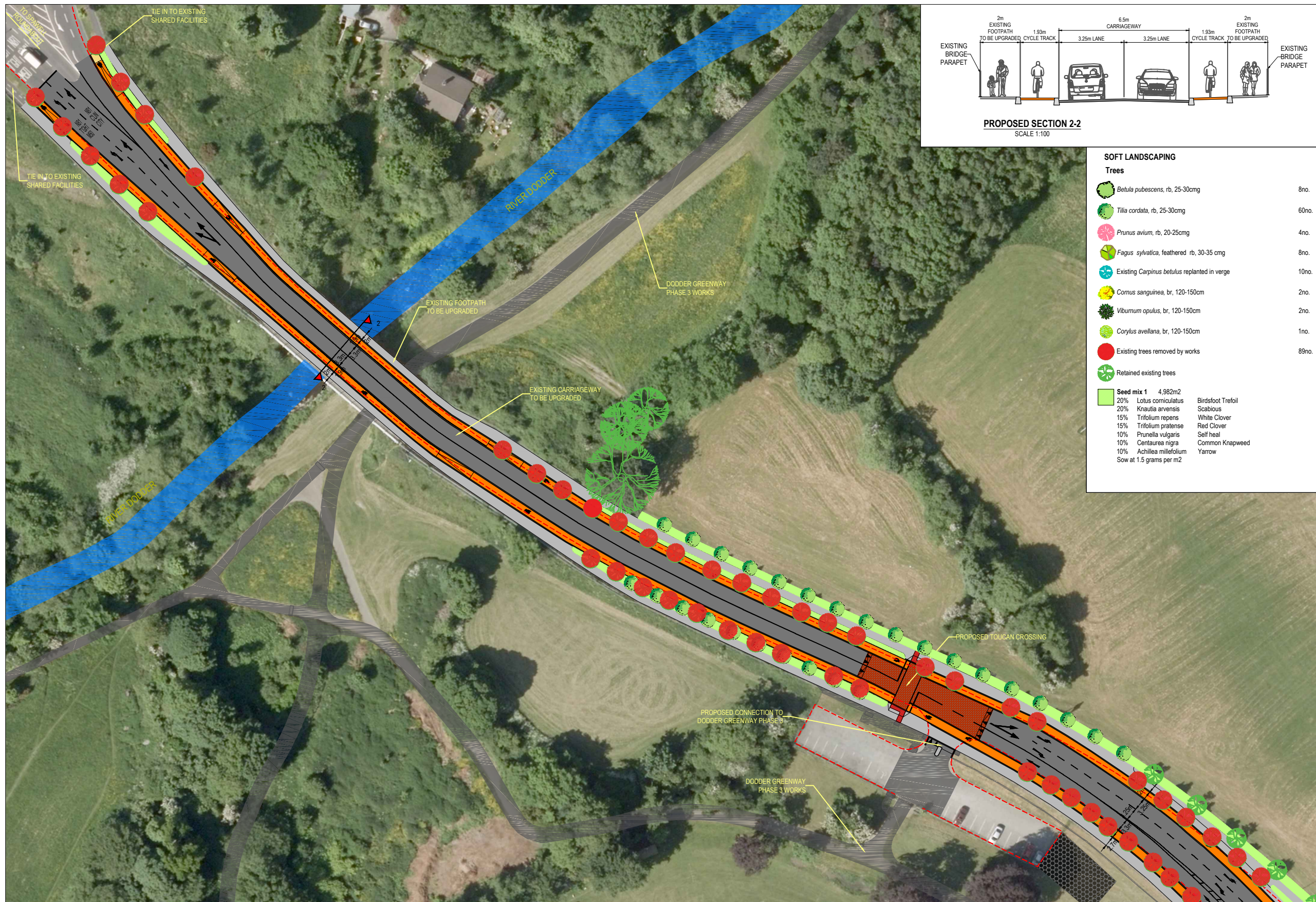
Status Code Suitability Description

P02 PLANNING

Revision Project Status

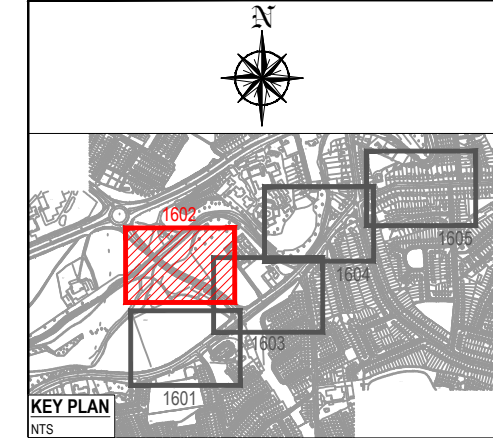
DODDER GREENWAY - PHASE 5

PART 8



- SOFT LANDSCAPING**
- Trees**
- Betula pubescens*, rb, 25-30cm 8no.
 - Tilia cordata*, rb, 25-30cm 60no.
 - Prunus avium*, rb, 20-25cm 4no.
 - Fagus sylvatica*, feathered rb, 30-35 cm 8no.
 - Existing *Carpinus betulus* replanted in verge 10no.
 - Cornus sanguinea*, br, 120-150cm 2no.
 - Viburnum opulus*, br, 120-150cm 2no.
 - Corylus avellana*, br, 120-150cm 1no.
 - Existing trees removed by works 89no.
 - Retained existing trees
- Seed mix 1 4,982m2**
- 20% *Lotus corniculatus* Birdsfoot Trefoil
 - 20% *Knautia arvensis* Scabious
 - 15% *Trifolium repens* White Clover
 - 15% *Trifolium pratense* Red Clover
 - 10% *Prunella vulgaris* Self heal
 - 10% *Centaurea nigra* Common Knapweed
 - 10% *Achillea millefolium* Yarrow
 - Sow at 1.5 grams per m2

DRAWING IS PRODUCED USING THE IRISH TRANSVERSE MERCATOR (ITM) GEOGRAPHIC COORDINATE SYSTEM **A1**



- LEGEND:**
- PROPOSED RED COLOURED SURFACING
 - PROPOSED RAISED OFF ROAD CYCLETRACK
 - PROPOSED TWO WAY CYCLE PATH
 - PROPOSED CARRIAGEWAY UPGRADE
 - PROPOSED BUS LANE
 - PROPOSED BUS STOP
 - PROPOSED CONCRETE FOOTPATH
 - EXISTING FOOTPATH
 - PROPOSED SHARED SURFACE
 - PROPOSED RAMP
 - PROPOSED PROPERTY ACCESS
 - PROPOSED GRASS VERGE / LOW LEVEL PLANTING
 - PROPOSED TACTILE PAVING (RED)
 - PROPOSED TACTILE PAVING (BUFF)
 - PROPOSED SEGREGATED SHARED CYCLE TRACK - FOOTWAY TACTILE PAVING (BUFF)
 - EXISTING KERB

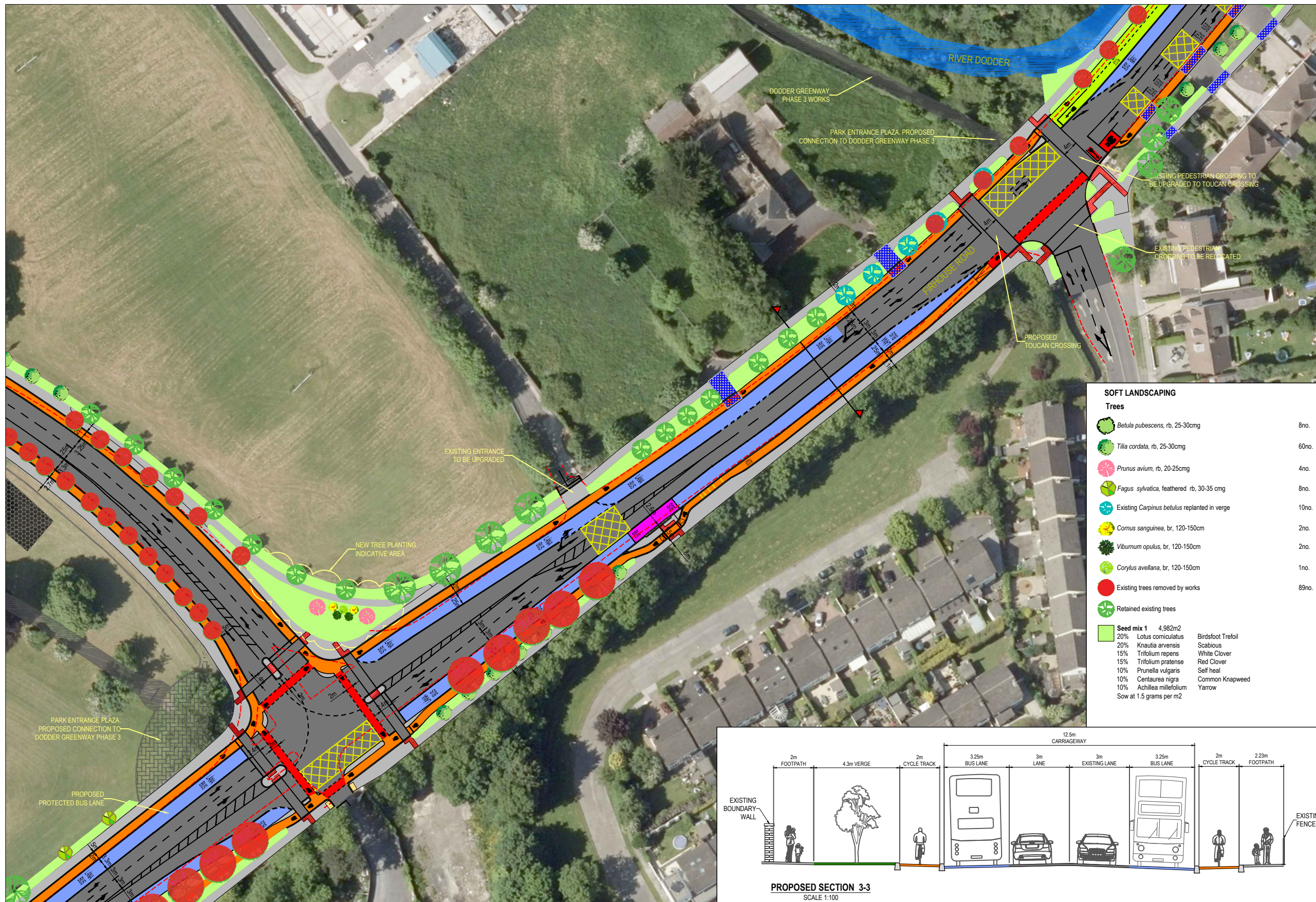
P02	SUBMISSIONS RESPONSE	KT	DRL	30/09/22
P01	PART 8 PLANNING	KT	DRL	04/07/22
Rev	Description	Drawn	Checked	Date

Clifton Scannell Emerson Associates Limited
Consulting Engineers
Mentec House (1st Floor),
Bakers Point, Pottery Road
Dun Laoghaire, Co. Dublin,
Ireland, A96 K6P3
T: +353 1 288 5006
F: +353 1 283 3466
E: info@csea.ie
W: www.csea.ie

Client	SOUTH DUBLIN COUNTY COUNCIL		
Project	DODDER GREENWAY PHASE 5 PART 8 LAYOUT SHEET 2 OF 5		
Dwg. Title	SHEET 2 OF 5		
Drawn By	KT	Date	MAR. 2022
Checked By	DRL	Scale	1:500 @ A1
Project Code	Originator	Zone/Phase	Level Type Role Dwg. No.
18_123D - CSE - GEN - XX - DR - C - 1602			
S2	FOR INFORMATION		
P02	PLANNING		

DODDER GREENWAY - PHASE 5

PART 8



SOFT LANDSCAPING

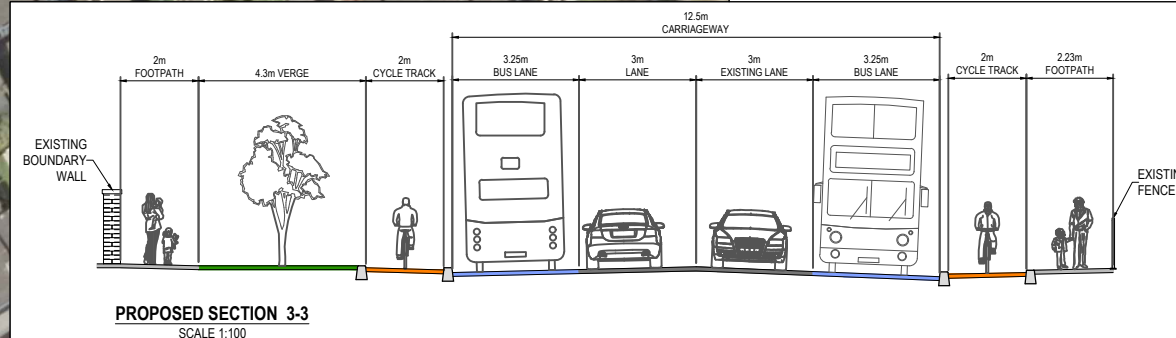
Trees

	Betula pubescens, rb, 25-30cmg	8no.
	Tilia cordata, rb, 25-30cmg	60no.
	Prunus avium, rb, 20-25cmg	4no.
	Fagus sylvatica, feathered rb, 30-35 cmg	8no.
	Existing Carpinus betulus replanted in verge	10no.
	Cornus sanguinea, br, 120-150cm	2no.
	Viburnum opulus, br, 120-150cm	2no.
	Corylus avellana, br, 120-150cm	1no.
	Existing trees removed by works	89no.
	Retained existing trees	

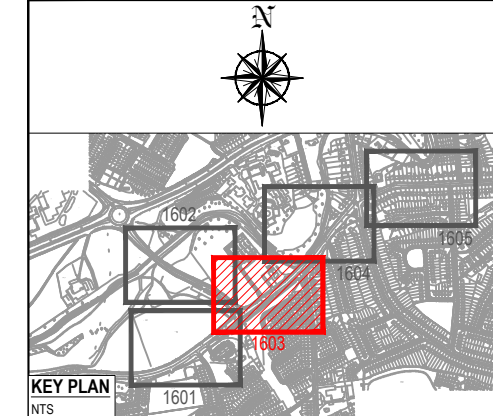
Seed mix 1 4.982m2

20%	Lotus corniculatus	Birdsfoot Trefoil
20%	Knautia arvensis	Scabious
15%	Trifolium repens	White Clover
15%	Trifolium pratense	Red Clover
10%	Prunella vulgaris	Self heal
10%	Centaurea nigra	Common Knapweed
10%	Achillea millefolium	Yarrow

Sow at 1.5 grams per m2



DRAWING IS PRODUCED USING THE IRISH TRANSVERSE MERCATOR (ITM) GEOGRAPHIC COORDINATE SYSTEM **A1**



KEY PLAN
NTS

LEGEND:

	PROPOSED RED COLOURED SURFACING
	PROPOSED RAISED OFF ROAD CYCLETRACK
	PROPOSED TWO WAY CYCLE PATH
	PROPOSED CARRIAGEWAY UPGRADE
	PROPOSED BUS LANE
	PROPOSED BUS STOP
	PROPOSED CONCRETE FOOTPATH
	EXISTING FOOTPATH
	PROPOSED SHARED SURFACE
	PROPOSED RAMP
	PROPOSED PROPERTY ACCESS
	PROPOSED GRASS VERGE / LOW LEVEL PLANTING
	PROPOSED TACTILE PAVING (RED)
	PROPOSED TACTILE PAVING (BUFF)
	PROPOSED SEGREGATED SHARED CYCLE TRACK - FOOTWAY TACTILE PAVING (BUFF)
	EXISTING KERB

P02	SUBMISSIONS RESPONSE	KT	DRL	30/09/22
P01	PART 8 PLANNING	KT	DRL	04/07/22

Rev	Description	Drawn	Checked	Date
-----	-------------	-------	---------	------

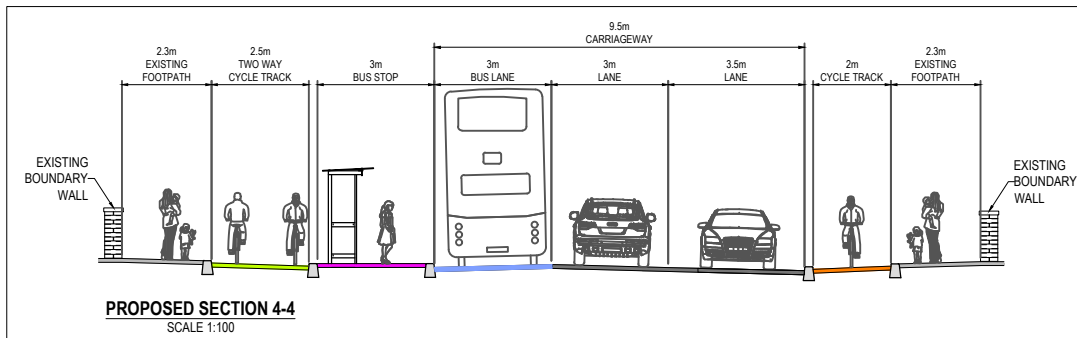
Clifton Scannell Emerson Associates Limited
Consulting Engineers
Merrett House (1st Floor),
Bakers Point, Pottery Road
Dun Laoghaire, Co. Dublin,
Ireland, A96 K6P3

T: +353 1 288 6006
F: +353 1 283 3466
E: info@csea.ie
W: www.csea.ie

Client	SOUTH DUBLIN COUNTY COUNCIL			
Project	DODDER GREENWAY PHASE 5			
Dwg. Title	PART 8 LAYOUT SHEET 3 OF 5			
Drawn By	KT	Date	MAR. 2022	18_123D
Checked By	DRL	Scale	1:500 @ A1	CSEA Job No.
Project Code	Originator	Zone/Phase	Level	Type
18_123D	CSE	GEN	XX	DR - C - 1603
S2	FOR INFORMATION			
Status Code	Suitability Description			
P02	PLANNING			
Revision	Project Status			

DODDER GREENWAY - PHASE 5

PART 8



SOFT LANDSCAPING

Trees

	<i>Betula pubescens</i> , rb, 25-30cmg	8no.
	<i>Tilia cordata</i> , rb, 25-30cmg	60no.
	<i>Prunus avium</i> , rb, 20-25cmg	4no.
	<i>Fagus sylvatica</i> , feathered rb, 30-35cmg	8no.
	Existing <i>Carpinus betulus</i> replanted in verge	10no.
	<i>Cornus sanguinea</i> , br, 120-150cm	2no.
	<i>Viburnum opulus</i> , br, 120-150cm	2no.
	<i>Corylus avellana</i> , br, 120-150cm	1no.
	Existing trees removed by works	89no.
	Retained existing trees	

Seed mix 1 4.982m2

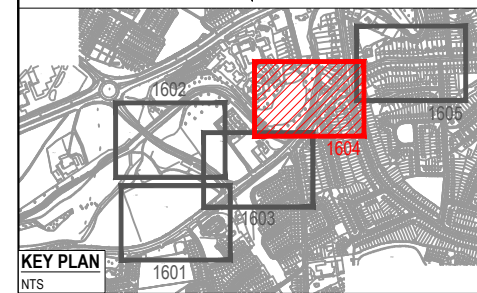
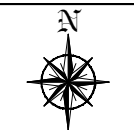
20%	<i>Lotus corniculatus</i>	Birdsfoot Trefoil
20%	<i>Knautia arvensis</i>	Scabious
15%	<i>Trifolium repens</i>	White Clover
15%	<i>Trifolium pratense</i>	Red Clover
10%	<i>Prunella vulgaris</i>	Self heal
10%	<i>Centaurea nigra</i>	Common Knapweed
10%	<i>Achillea millefolium</i>	Yarrow

Sow at 1.5 grams per m2



DRAWING IS PRODUCED USING THE IRISH TRANSVERSE MERCATOR (ITM) GEOGRAPHIC COORDINATE SYSTEM

A1



KEY PLAN
NTS

LEGEND:

	PROPOSED RED COLOURED SURFACING
	PROPOSED RAISED OFF ROAD CYCLETRACK
	PROPOSED TWO WAY CYCLE PATH
	PROPOSED CARRIAGEWAY UPGRADE
	PROPOSED BUS LANE
	PROPOSED BUS STOP
	PROPOSED CONCRETE FOOTPATH
	EXISTING FOOTPATH
	PROPOSED SHARED SURFACE
	PROPOSED RAMP
	PROPOSED PROPERTY ACCESS
	PROPOSED GRASS VERGE / LOW LEVEL PLANTING
	PROPOSED TACTILE PAVING (RED)
	PROPOSED TACTILE PAVING (BUFF)
	PROPOSED SEGREGATED SHARED CYCLE TRACK - FOOTWAY TACTILE PAVING (BUFF)
	EXISTING KERB

P02	SUBMISSIONS RESPONSE	KT	DRL	30/09/22
P01	PART 8 PLANNING	KT	DRL	04/07/22

Rev	Description	Drawn	Checked	Date

Clifton Scannell Emerson Associates
Clifton Scannell Emerson Associates Limited
Consulting Engineers
Merrett House (1st Floor),
Bakers Point, Pottery Road
Dun Laoghaire, Co. Dublin,
Ireland, A96 K6P3
T: +353 1 288 5006
F: +353 1 283 3466
E: info@csea.ie
W: www.csea.ie

Client: SOUTH DUBLIN COUNTY COUNCIL
Project: DODDER GREENWAY PHASE 5 PART 8 LAYOUT SHEET 4 OF 5
Dwg. Title: 18_123D

Drawn By: KT Date: MAR. 2022
Checked By: DRL Scale: 1:500 @ A1
Project Code: 18_123D - CSE - GEN - XX - DR - C - 1604

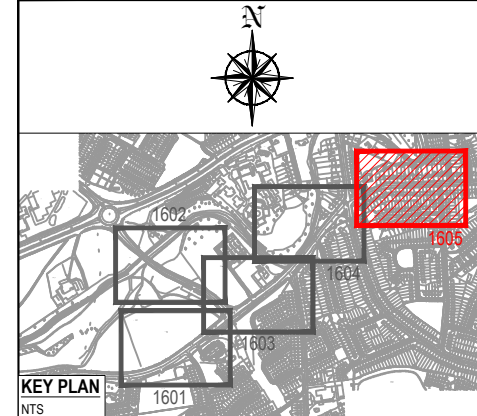
S2	FOR INFORMATION
P02	PLANNING

DODDER GREENWAY - PHASE 5

PART 8

DRAWING IS PRODUCED USING THE IRISH TRANSVERSE MERCATOR (ITM) GEOGRAPHIC COORDINATE SYSTEM

A1



LEGEND:

	PROPOSED RED COLOURED SURFACING
	PROPOSED RAISED OFF ROAD CYCLETRACK
	PROPOSED TWO WAY CYCLE PATH
	PROPOSED CARRIAGEWAY UPGRADE
	PROPOSED BUS LANE
	PROPOSED BUS STOP
	PROPOSED CONCRETE FOOTPATH
	EXISTING FOOTPATH
	PROPOSED SHARED SURFACE
	PROPOSED RAMP
	PROPOSED PROPERTY ACCESS
	PROPOSED GRASS VERGE / LOW LEVEL PLANTING
	PROPOSED TACTILE PAVING (RED)
	PROPOSED TACTILE PAVING (BUFF)
	PROPOSED SEGREGATED SHARED CYCLE TRACK - FOOTWAY TACTILE PAVING (BUFF)
	EXISTING KERB

P02	SUBMISSIONS RESPONSE	KT	DRL	30/09/22
P01	PART 8 PLANNING	KT	DRL	04/07/22
Rev	Description	Drawn	Checked	Date



Clifton Scannell Emerson
Associates Limited
Consulting Engineers
Mentec House (1st Floor),
Bakers Point, Pottery Road
Dun Laoghaire, Co. Dublin,
Ireland, A96 K6P3
T: +353 1 288 5006
F: +353 1 283 3466
E: info@csea.ie
W: www.csea.ie

Client	SOUTH DUBLIN COUNTY COUNCIL					
Project	DODDER GREENWAY PHASE 5 PART 8 LAYOUT SHEET 5 OF 5					
Dwg. Title	18_123D					
Drawn By	KT	Date	MAR. 2022	18_123D		
Checked By	DRL	Scale	1:500 @ A1	CSEA Job No.		
Project Code	Originator	Zone/Phase	Level	Type	Role	Dwg. No.
18_123D	CSE	GEN	XX	DR	C	1605
S2	FOR INFORMATION					
Status Code	Suitability Description					
P02	PLANNING					
Revision	Project Status					

SOFT LANDSCAPING

Trees

	<i>Betula pubescens</i> , rb, 25-30cmg	8no.
	<i>Tilia cordata</i> , rb, 25-30cmg	60no.
	<i>Prunus avium</i> , rb, 20-25cmg	4no.
	<i>Fagus sylvatica</i> , feathered rb, 30-35 cmg	8no.
	Existing <i>Carpinus betulus</i> replanted in verge	10no.
	<i>Cornus sanguinea</i> , br, 120-150cm	2no.
	<i>Viburnum opulus</i> , br, 120-150cm	2no.
	<i>Corylus avellana</i> , br, 120-150cm	1no.
	Existing trees removed by works	89no.
	Retained existing trees	

Seed mix 1 4,982m2

20%	<i>Lotus corniculatus</i>	Birdsfoot Trefoil
20%	<i>Knautia arvensis</i>	Scabious
15%	<i>Trifolium repens</i>	White Clover
15%	<i>Trifolium pratense</i>	Red Clover
10%	<i>Prunella vulgaris</i>	Self heal
10%	<i>Centaurea nigra</i>	Common Knapweed
10%	<i>Achillea millefolium</i>	Yarrow

Sow at 1.5 grams per m2

