

# Part 8 for proposals

## Lucan Demesne and Lucan Promenade

SDCC Council meeting 11 April 2022

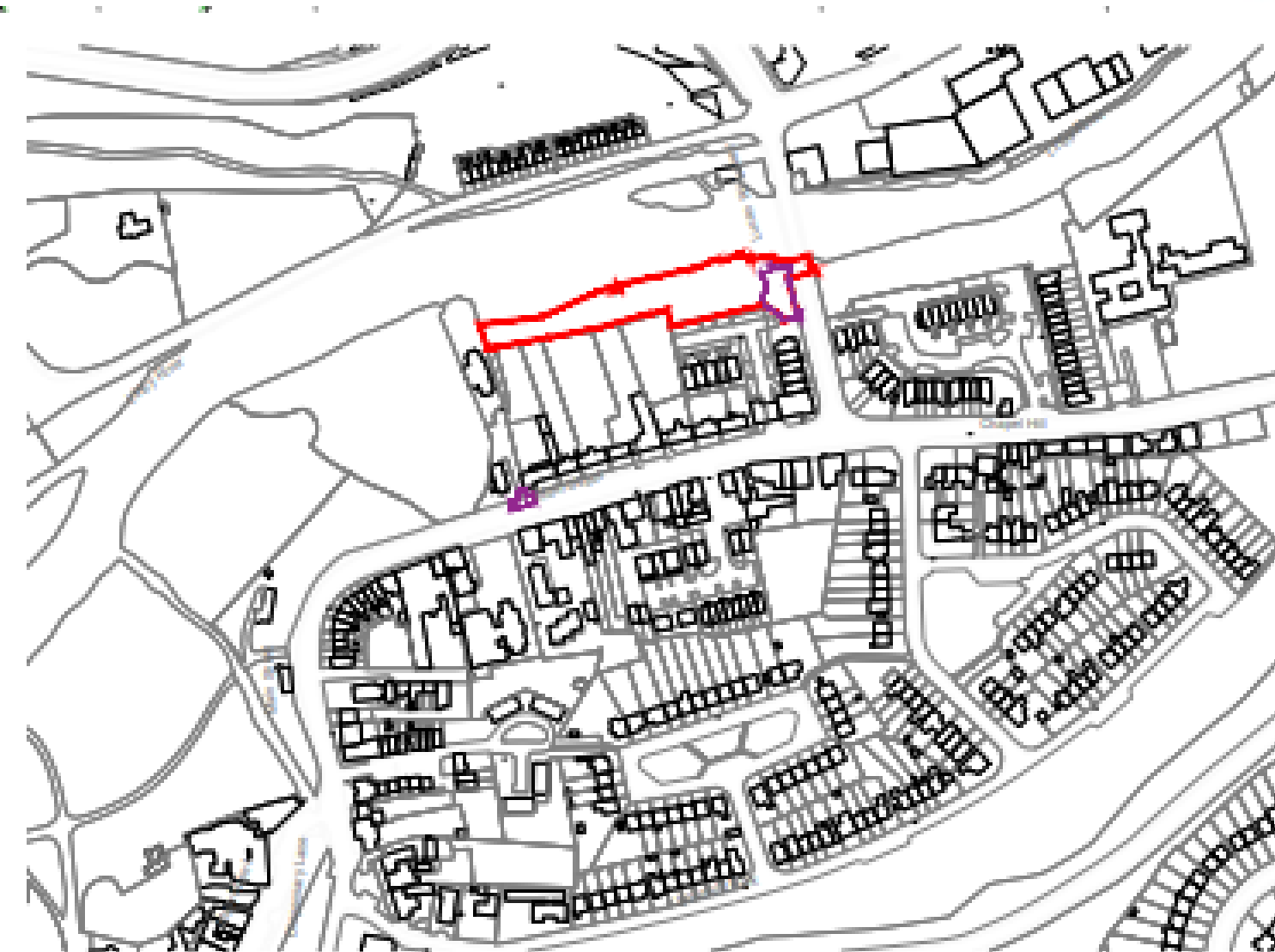


***Lucan Promenade Proposals***



***Lucan Demense Proposals***

## Lucan Promenade Location





# Lucan Promenade Proposals



## Public Realm

- . Create gathering spaces
- . Flexible spaces for market stalls and seating for events.
- . Create a soft backdrop to the hardscaped promenade

## Access

- . Implement the steps connecting Lucan Bridge and the promenade.
- . Keep maintenance access for SDCC and Fisheries Ireland

## Seating

- . Increase seating capacity throughout the site
- . Reconfigure steps to include seats on the Watery Lane side

## Planting

- . Increased planting in keeping with the Liffey's riverbank flora.
- . Introduce pollinator friendly wildflower planting.

## Surfacing

- . Maintain existing footpath
- . Add universally accessible, planted paving on the southern side of the site.

## Infrastructure

- . Upgrade luminaires
- . Provide power points to allow for events



view looking west

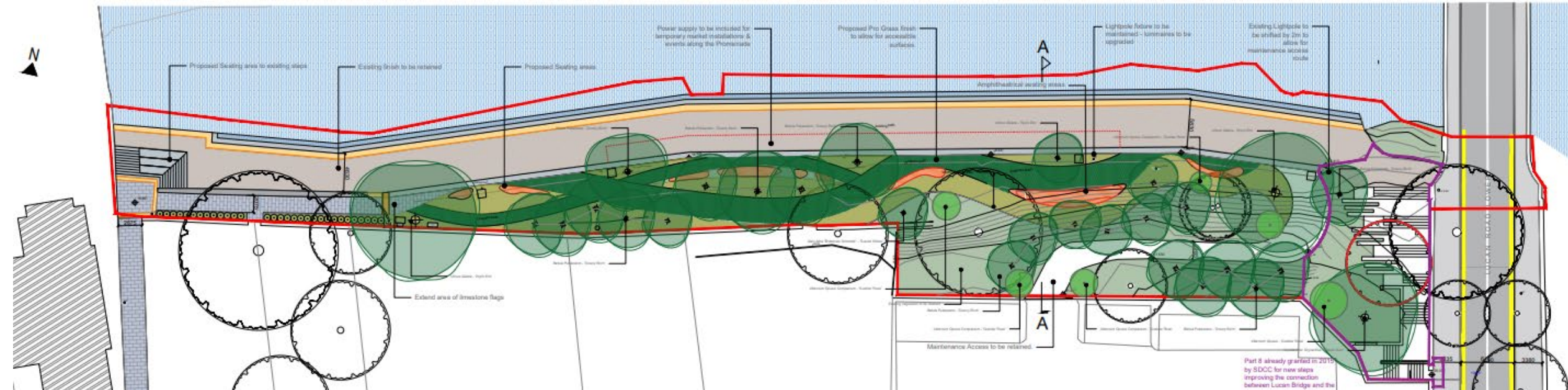


view looking south east

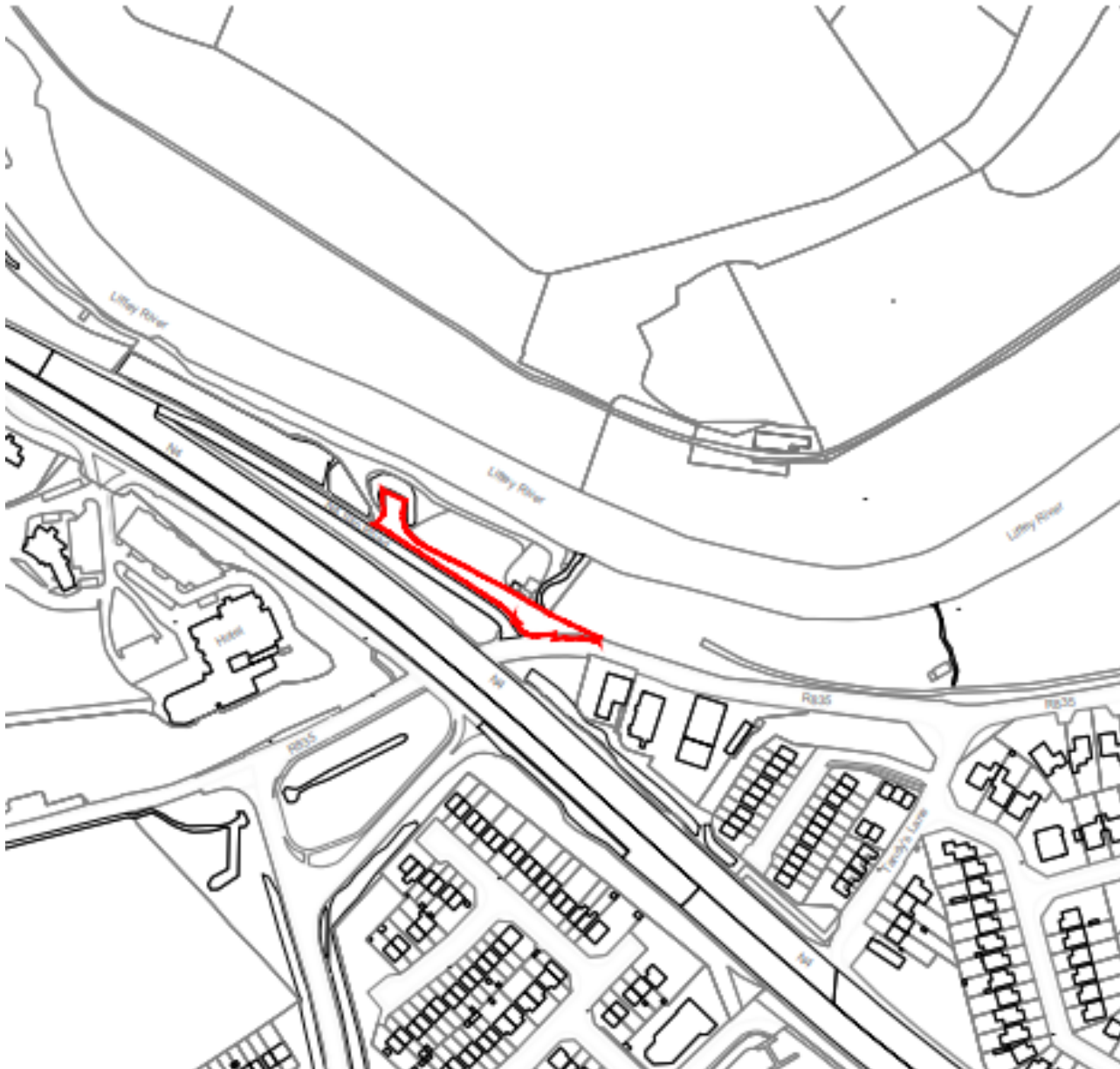




# Lucan Promenade Detailed Plan



## Lucan Demesne Location





# Lucan Demesne Proposals



## Public Realm

- . Create a plaza, marking the entrance to Lucan Demesne Park
- . Create a portal marking the entrance to the park.
- . Open up views into the historic woodland.
- . Treating the existing wall with painted laths.
- . Include new bike stands promoting sustainable travel.
- . Include new bins.
- . Implement wayfinding elements and signage.

## Seating

- . Increase seating capacity throughout the site
- . Create a bench seat overlooking the woodland over the stream.

## Planting

- . Create a buffer zone between the site and the noise from the N4 and its slip road.

## Safety

- . Create passive surveillance by opening up sections of the wall.

## Surfacing

- . Resurface the area with Ballylusk.
- . Create paved areas with high quality materials in keeping with the Village Green.

## Infrastructure

- . Undergrounding of overhead cables.
- . Futureproofing electrical connections to potential developments to the north west.







## Early Stage Consultations

- 5 presentations and updates were provided to the Lucan Area Councillors
  - 23/04/2021, 29/06/2021, 14/07/2021, 30/09/2021 and on 13/10/2021
- 8 Virtual Presentations were held for Local Businesses, Community Groups & Residents on:
  - 05/05/2021 (early engagement with Businesses)
  - 19/05/2021 (early engagement with Community stakeholders)
  - 13/10/2021 (progress update on preferred design)
  - 14/10/2021 (progress update on preferred design)
  - 21/10/2021 (progress update on preferred design)
  - 17/11/2021 (progress update with Political Representatives also in attendance)
- Face to face meetings were held with Local Businesses on:
  - 28/10/2021
  - 03/11/2021 6
  - 20/12/2021
- 2 separate leaflet drops to over 760 premises were conducted



## Part 8 Public Consultation

- 20<sup>th</sup> January to 3<sup>rd</sup> March 2022
- 2 Open Public meetings were held in February in the Lucan Library
- 700 leaflet drop to local businesses and residents (*this is included in the figure highlighted on previous slide*)
- SDCC's Consultation Portal Page was also launched; <https://consult.sdublincoco.ie/en/consultation/part-8-proposed-works-lucan-demesne-and-lucan-promenade>

## Submissions received as part of the statutory public consultation

53 submissions were received, they can be broadly categorised under the following headings;

- Demense
  - Concerns over reduced access to the Demesne for Kayakers
  - The loss of parking at the entrance to the Demesne
  - Health and Safety concerns with a new pedestrian crossing on the Lucan Road
  - Partial removal of historic wall at the Demesne Entrance
  - Removal of flowerbeds, shrubbery, and "Welcome to Lucan" stone
- Promenade
  - Access to the promenade from Watery Lane
  - Public realm improvements, quality of materials, the type and mix of furniture, and public lighting
  - Enhancements to Lucan Bridge
  - Enabling the use of temporary stalls on the Weir side
- Both locations
  - Public realm improvements, quality of materials, type and mix of furniture, bins, water fountains and public lighting
  - Cycle Parking