

Lucan Village improvement projects

The Council is proposing to commence the statutory Part 8 planning application process for the following three projects around Lucan Village:

1. Village Green and the section of Main Street along the western edge of the Green
2. Weir Side promenade
3. Lucan Demesne entrance

Public consultation on these three projects is planned to commence before the end of this year.

On these three projects to date, there has been informal engagement with local Cllrs, local businesses and interested groups, as well as a series of on-street and on-line surveys. This engagement is being used to inform these three planning applications.

Separate to these three planning applications, the Council are at the very early stages of considering a trial along Main Street between the Village Green and the River Liffey Bridge for a short period of time during 2022. The purpose of this trail is to assess the potential to provide improved public spaces for the benefit of pedestrians and businesses along this section of the Main Street. This proposal is only at concept stage. The intention is to minimise the lose of any car parking spaces along this section of Main Street, but it may involve the re-arrangement of traffic movement. When a draft design is ready next year, the Council will discuss this with Councillors, local businesses and stakeholders. Following this, if a suitable design can be prepared it would be trialled for a period of time to assess its success or not.

The 3 Project Areas



Image from Google Maps

Village Green



Village Green Existing photos & Constraints

Existing Wildlife



Existing Features:

Handrails

Seating

Signage

Pergola



Protected Structures

Flooding

Existing Services

Existing Greenery

Layout

Dispensary Lane (narrow & unsafe footpath)

Main Street Existing photos and Constraints

Traffic Connectivity & Pedestrian Movement Parking numbers and layout Accessibility (footpaths) Flood barriers Existing Greenery Footpath layout & finishes Protected Structures Usage of Main St



Current layout promotes car use over pedestrian use

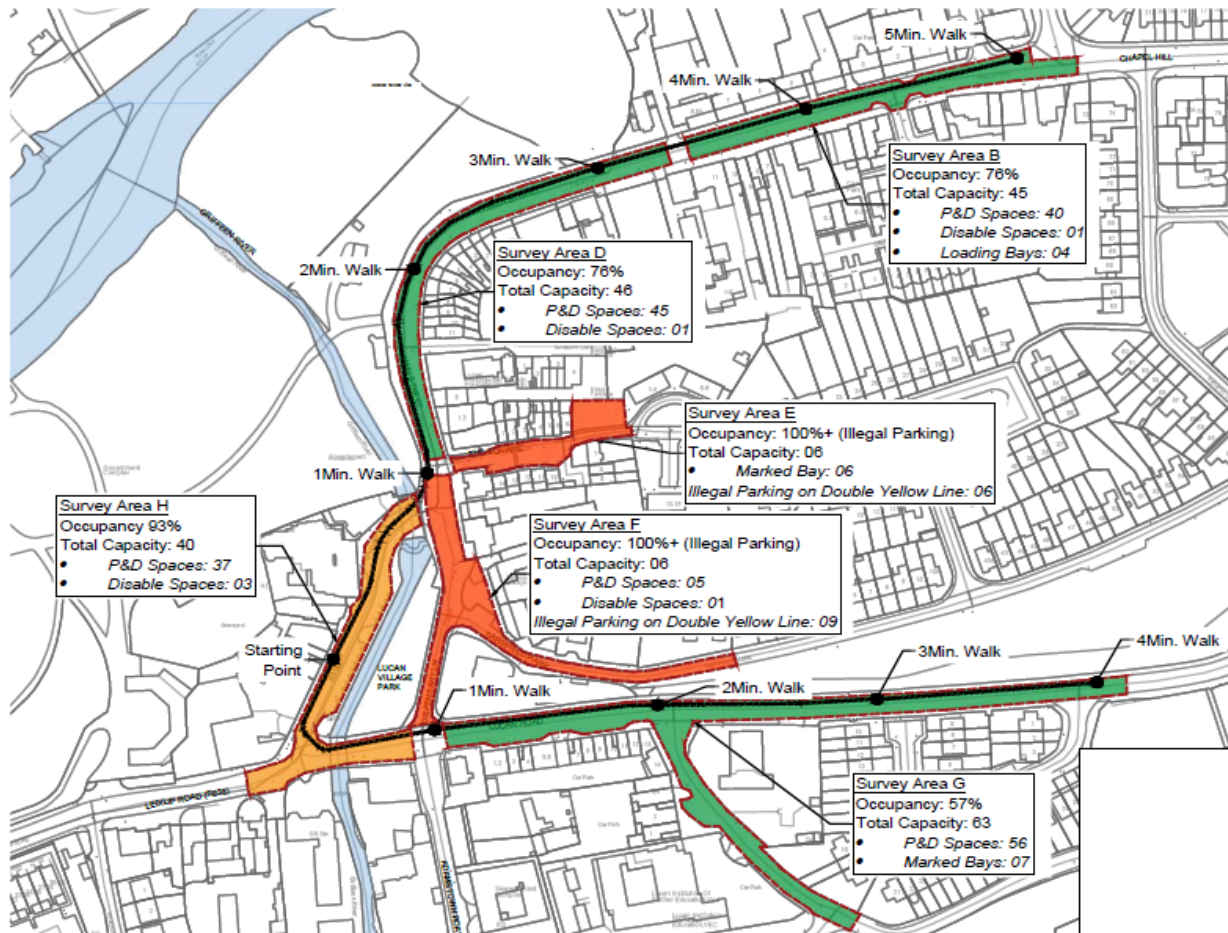
Carriageway and Parking bays are obstacles to pedestrians the entire length of the Village Green

Cluttered streetscape
Unsafe parking layout

Uneven surfacing
No Cycle lanes

Pedestrians space limited between flood wall and parked cars.

Current parking usage at peak hours



Public Consultation Feedback (Lucan businesses, Lucan Groups, Lucan Councillors in April & Fáilte Ireland)

"Local community bus routes suggested to reduce car presence"

Flood Risk is a major concern to the Lucan community and businesses, particularly surrounding the Village Green

"Relocate Taxi Stands"

"Encourage the Eastern end of the Village Green to come out with coffee tables"

"Make Main Street feel more connected to the Village Green"

"Integrate the Canal Loop Greenway into the Village Green"

"Introduce New Cycle Lanes in the Village Green"

"Discourage movement of cars using Lucan as a rat-run to avoid the M50 tolls"

"Removal of Pergola is welcome"

- Anti-social behaviour concerns
- Dark and impedes sightlines
- Unsafe & uninviting

"Maintain local access and set down areas for drop-off for shops and pharmacies"

"Keep parking in the Village Green"

"Encourage Wildlife"

"No one uses the Village Green park"

"Create public spaces for people to have coffee"

"The traffic is eating away at the heart of Lucan"

"Better wayfinding and display of local history"

"Open up the park"

"Open Up the Village Green"

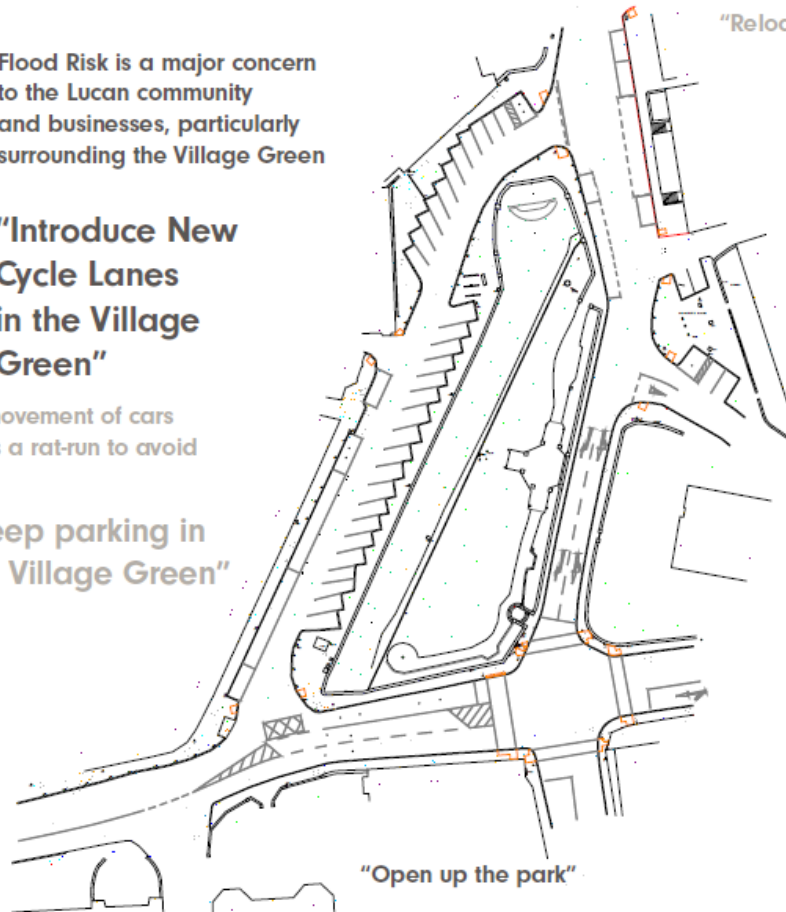
"Better Lighting to make the place feel safer"

"Upgrade Seating"

"Improve sightlines"

"Bandstand for concerts and performances"

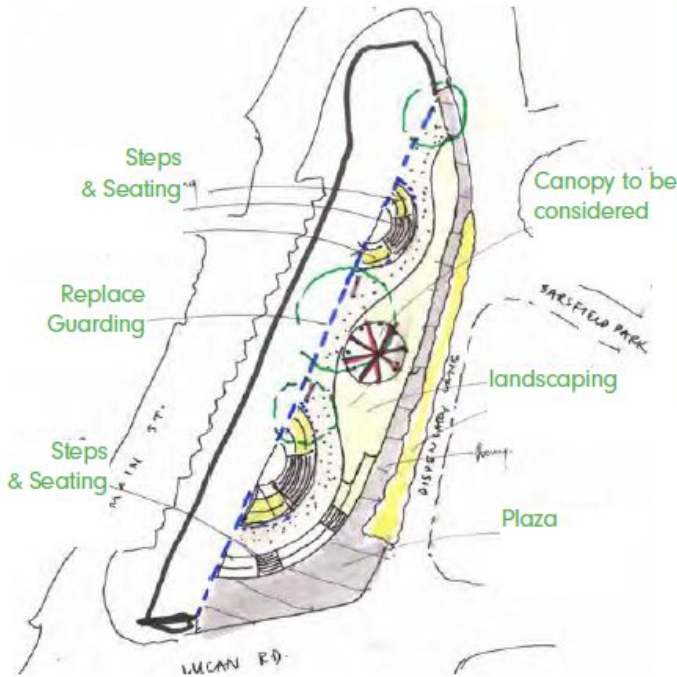
"Village Green should be the heart of Lucan"



1. Village Green Only

Aims for the Village Green

- . Create a sense of arrival into the Village Green
- . Encourage interaction, visual and physical from the park
- . Improve sightlines into the Village Green
- . Replace guarding to the canal
- . Improve narrow Dispensary Lane footpath
- . Improve Landscaping
- . Improve accessibility into the park
- . Provide seating, bins and street furniture
- . Provide focal point to the space (performance, seating etc)



2. Include Main Street

14 Parking Spaces incl:

- Delivery until 11am
- 3 Disabled Bays
- 2 future EV bays
- 9 set-down areas

possibility of becoming a taxi stand at night time

LEVEL ACCESS ACROSS MAIN STREET AND THE PROPOSED VILLAGE GREEN PLAZA

Possibility of moving taxi rank being assessed

Maintain key existing trees

Provide Outdoor dining spaces

Replace Guarding

Loading until 11am

Short stay car parking bays provided

Cyclist arrival point

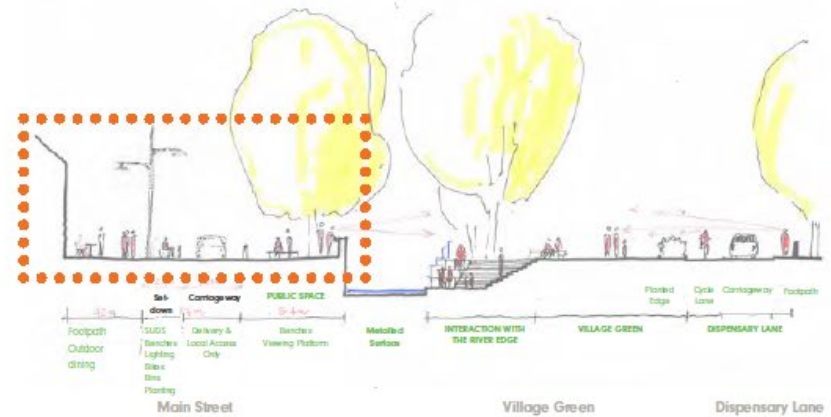
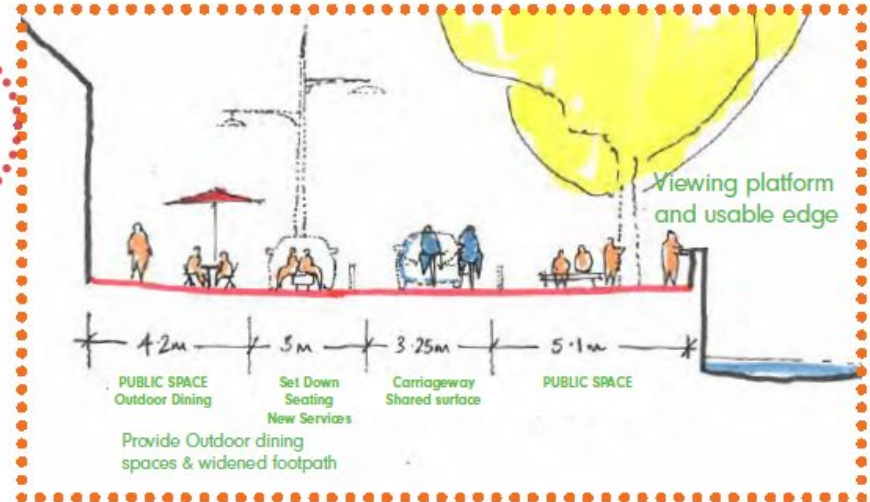
Cycle Stands and charging points and water fountain

3no. parking spaces possible outside AIB

Encourage Interaction with the River Edge

Create southern plaza

Focal point / performance space



Perspective of Main Street looking North



Perspective from Main Street looking South



Aerial View of the Village Green from Vesey Bridge



Riverside



Existing State



Public Consultation Feedback

(Lucan businesses, Lucan Groups, Lucan Councillors)

“Durable signage, of higher quality than at present”

“Upgrades to the landscaping would be welcome and interesting to see”

“Signage and wayfinding needs to improve to attract visitors”

“Improve connection to the Village Green”

“Tourists are unaware of the promenade”

“Currently feels like a secret of Lucan”

“Nice place have a coffee”

“Watery Lane needs resurfacing”

“Wayfinding from Main Street to the Riverside very poor and uninviting”

“Watery Lane does not look like a public access route”

“The promenade should be a destination”

“More benches needed along the promenade”

Existing State



Image of Watery Lane



Photograph of the Riverside promenade looking towards Lucan Bridge

Design Considerations

Works carried out in 2008 by the SDCC

Views

Protected Structures

Approach to the site (Watery Lane and Existing Steps)

Existing ecology and wildlife (river edge)

Regular flooding occurring on the Riverbank

Potential uses of the space, events

Appropriate planting themes

Maintenance Access and Fisheries Ireland.

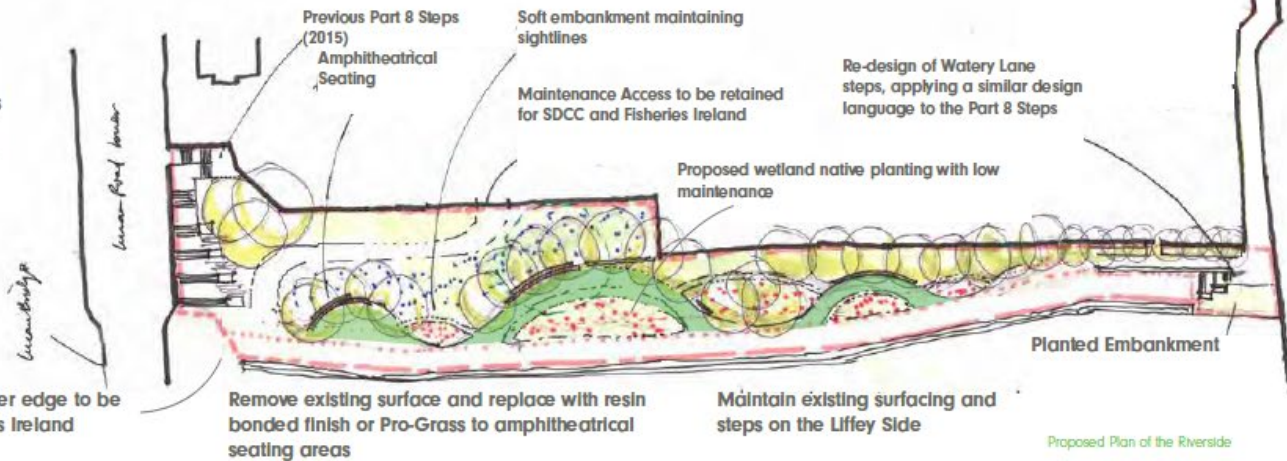


Riverside Proposal

Overhanging tree canopies to soften the hardscaping and revert to a riverbank character of the Liffey, without creating anti-social areas.



Create flexible spaces to allow pop-up markets and festivals to take place



Access to the river edge to be kept for Fisheries Ireland

Remove existing surface and replace with resin bonded finish or Pro-Grass to amphitheatrical seating areas

Maintain existing surfacing and steps on the Liffey Side

Proposed Plan of the Riverside

Riverside Concepts

View looking east



Riverside Concepts

View looking east



Demesne Park Entrance



Demesne Park Entrance Existing photos (May 2021)



Public, Local Businesses and Local Groups Consultation

Feedback (Lucan businesses, Lucan Groups, Lucan Councillors)

“Seating to be provided everywhere possible”

“Drop-off facility is required”
(for rafters)

“The entrance should be re-located at St Katherine’s Park or further along Leixlip Road”

“The weir is an important feature & is well frequented by paddlers and kayakers”

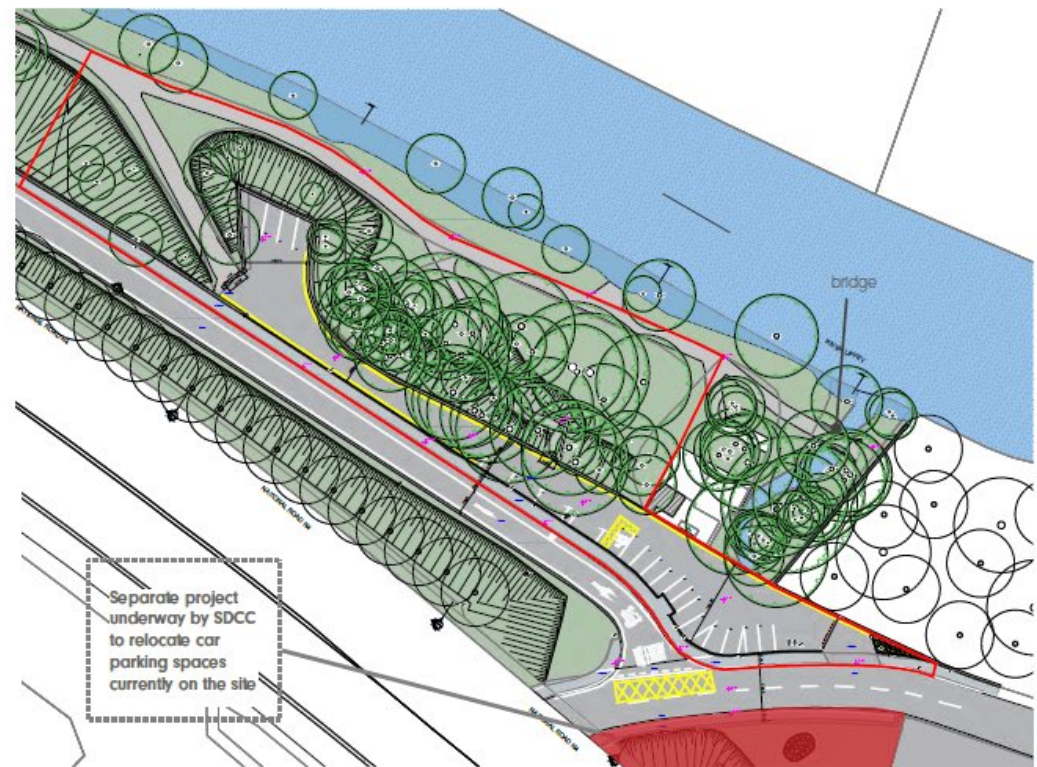
“frequented by university clubs who usually come in buses”

“Car Park known for anti social behaviour”

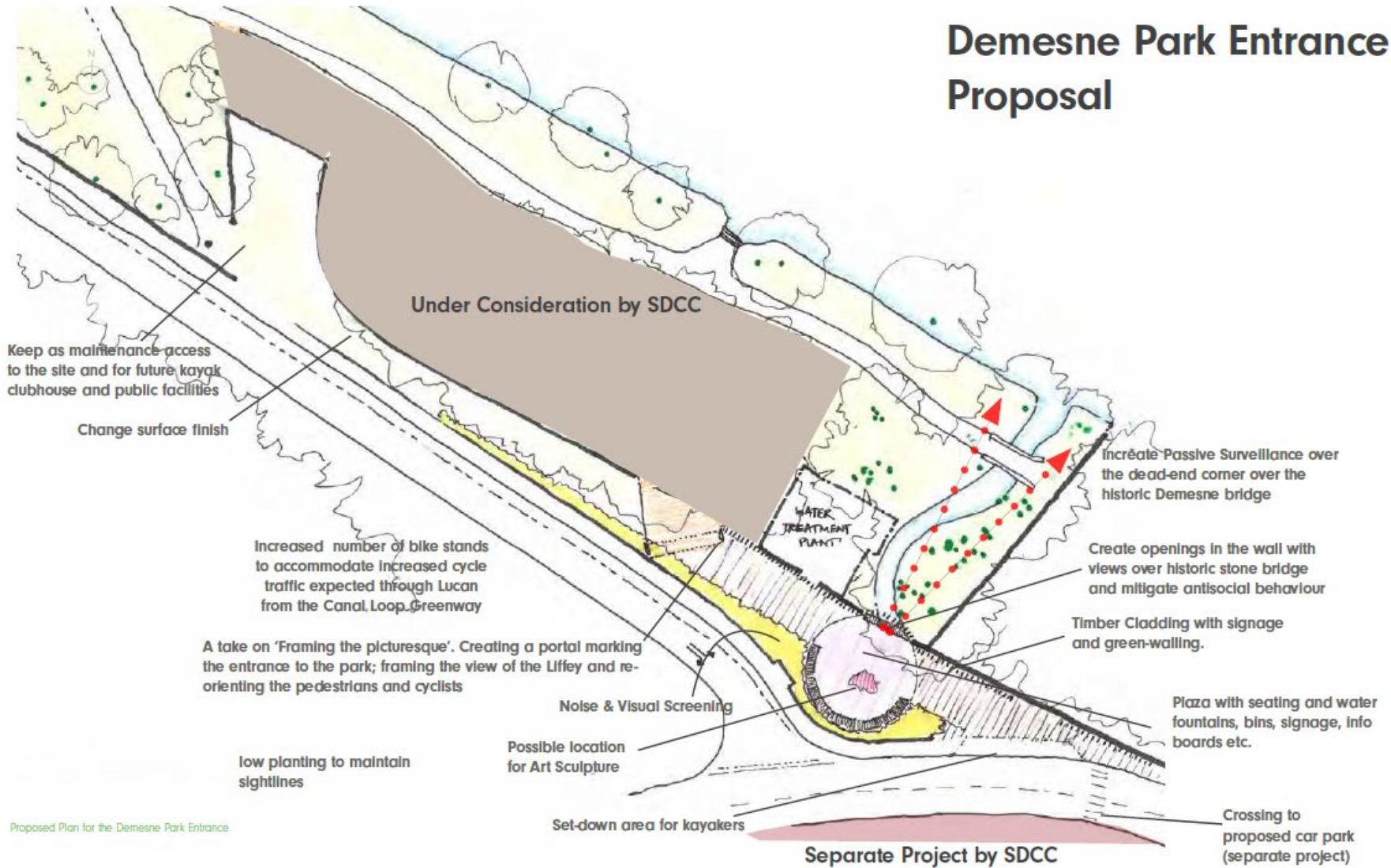
“Dangerous Car Park”

“Break-ins are common for the parked cars”

Existing State & Separate project underway by SDCC



Demesne Park Entrance Proposal



Proposed Plan for the Demesne Park Entrance

Demesne Park Entrance Sketch

View looking west



+353 (0)51 858121
info@dhbarchitects.ie
www.dhbarchitects.ie

