

DODDER GREENWAY DODDER ROAD LOWER

DRAWING IS PRODUCED USING THE
IRISH TRANSVERSE MERCATOR (ITM)
GEOGRAPHIC COORDINATE SYSTEM

A1



Rev	Description	Drawn	Checked	Date
P02	GENERAL AMENDMENTS	KT	RG	XX/XX/XX
P01	PART 8 PLANNING	KT	DRL	03/12/20

Clifton Scannell Emerson
Associates Limited
Consulting Engineers
Mentor House (1st Floor),
Bakers Point, Pottery Road
Dun Laoghaire, Co. Dublin,
Ireland, A96 K6P3
T: +353 1 288 5006
F: +353 1 283 3466
E: info@csea.ie
W: www.csea.ie

Client
SOUTH DUBLIN
COUNTY COUNCIL

Project
DODDER GREENWAY
PHASE 5
DODDER ROAD LOWER
UPGRADE - OVERALL

Dwg. Title
18_123C

Drawn By KT **Date** DEC. 2020
Checked By DRL **Scale** 1:1250 @ A1

Project Code 18_123C - CSE - GEN - XX - DR - C - 1430
Originator CSEA Job No.
Zone/Phase
Level
Type
Role
Dwg. No.

S2 SUITABLE FOR INFORMATION
Status Code Suitability Description

P02 PART 8 PLANNING
Revision Project Status

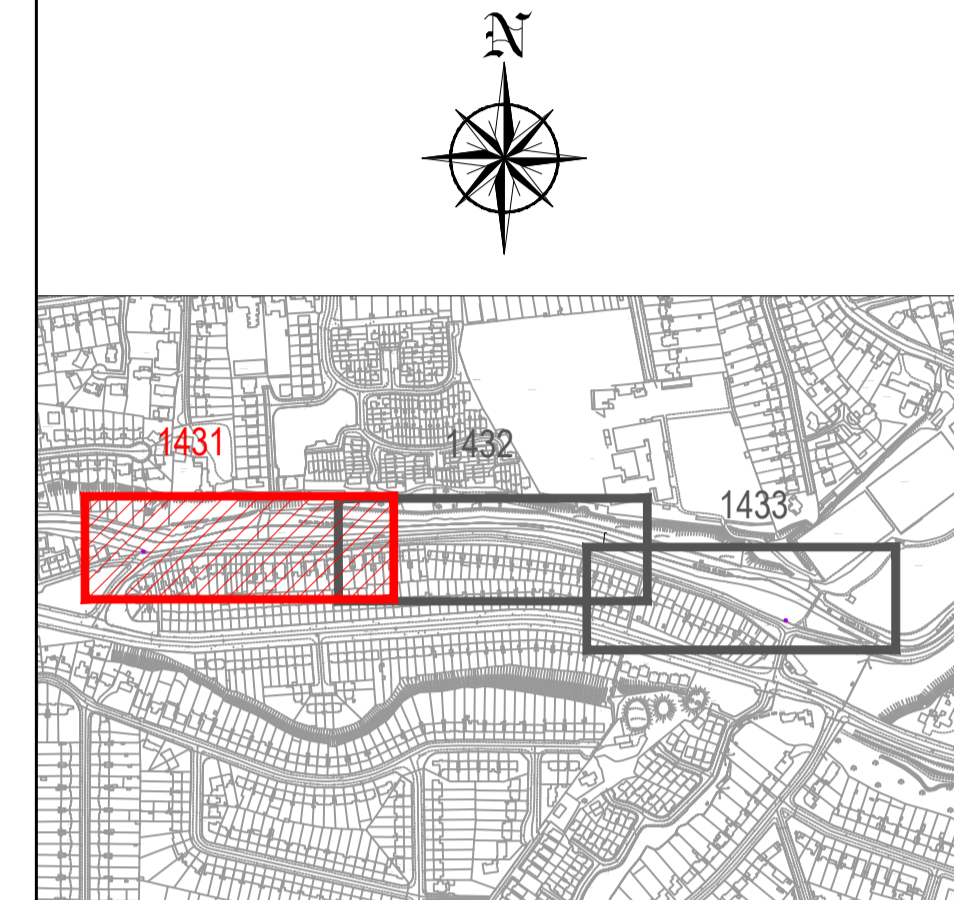
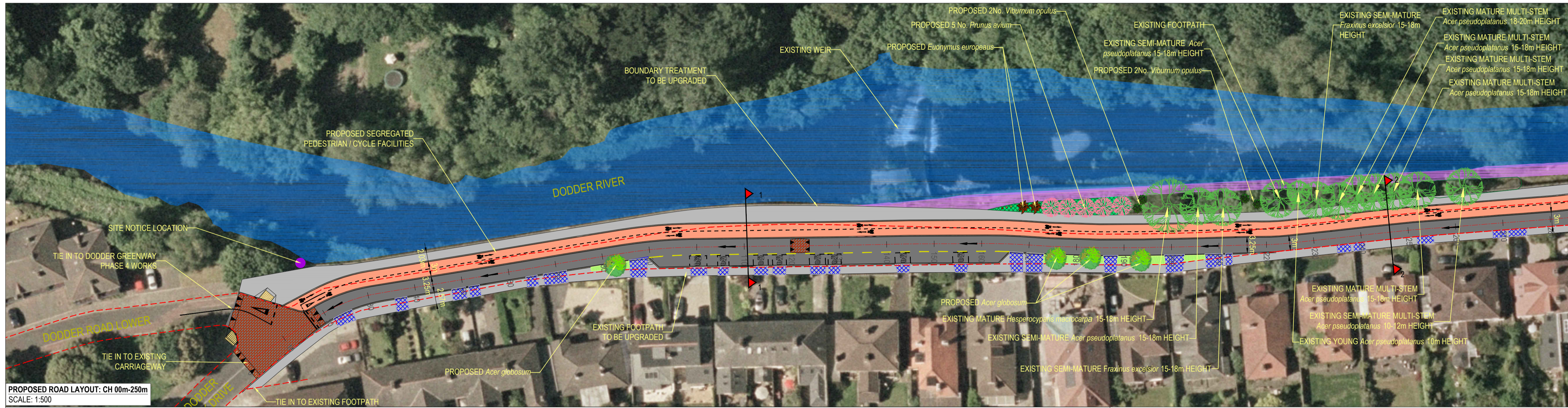
LEGEND:

	PROPOSED SEGREGATED CYCLEPATH
	PROPOSED CARRIAGEWAY REALIGNMENT
	PROPOSED SHARED AREA
	PROPOSED FOOTPATH / CHANNELISING ISLAND
	EXISTING FOOTPATH
	PROPOSED TACTILE PAVING (RED)
	PROPOSED SEGREGATED SHARED CYCLE TRACK - FOOTWAY TACTILE PAVING (BUFF)
	EXISTING KERB

DODDER GREENWAY DODDER ROAD LOWER

DRAWING IS PRODUCED USING THE
IRISH TRANSVERSE MERCATOR (ITM)
GEOGRAPHIC COORDINATE SYSTEM

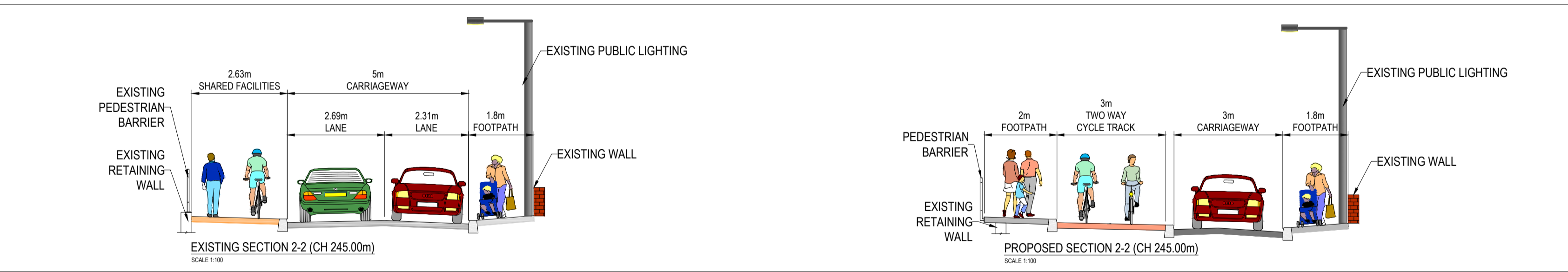
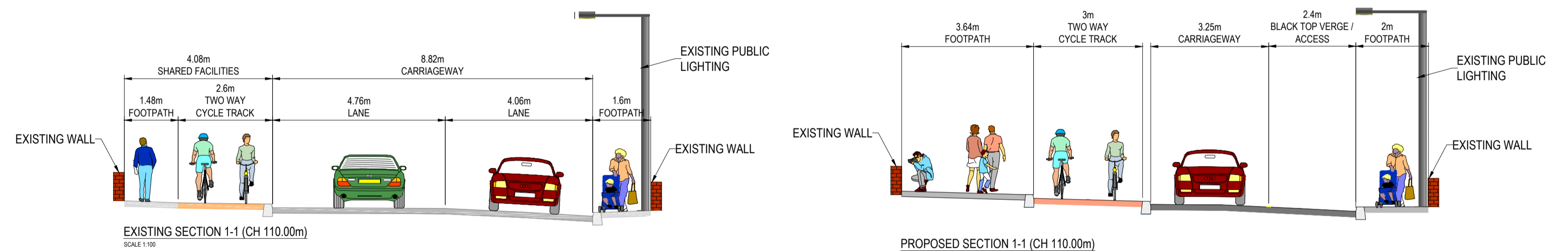
A1



KEY PLAN
NTS

LEGEND:

	PROPOSED SEGREGATED CYCLEPATH
	PROPOSED CARRIAGEWAY REALIGNMENT
	PROPOSED SHARED AREA
	PROPOSED FOOTPATH / CHANNELISING ISLAND
	EXISTING FOOTPATH
	PROPOSED TACTILE PAVING (RED)
	PROPOSED SEGREGATED SHARED CYCLE TRACK - FOOTWAY TACTILE PAVING (BUFF)
	EXISTING KERB



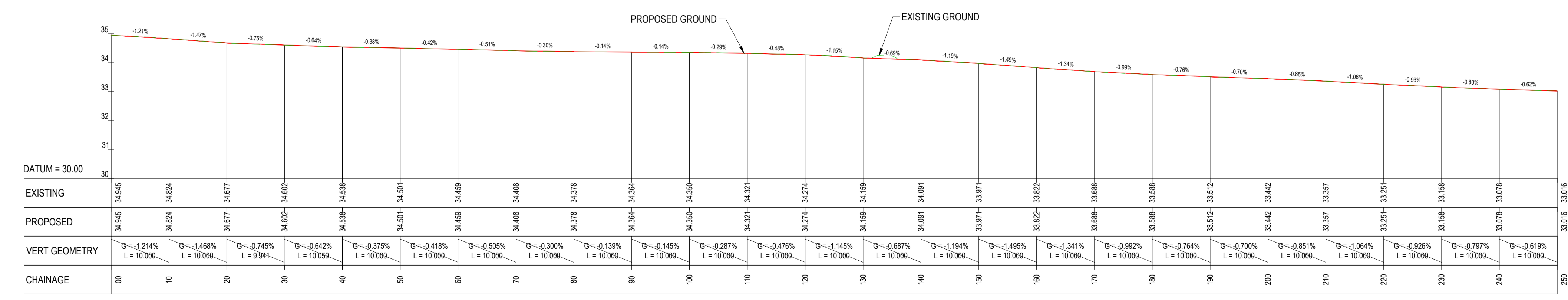
1. Existing native trees on the site shall be preserved where possible, as a part of the landscape design scheme. The Landscape Architect/Arborist shall be consulted at the time of vegetation clearance with regards to ascertaining which trees can viably and safely be preserved as a part of the Landscape construction works.

HARD LANDSCAPING

- Galvanised steel post 100x100mm, powder coated RAL 3020 of 1500mm height, fixed in position with individual concrete footings set below ground level with steel reinforcement bracing (Refer to Engineer's drawings for fixing details) - 4no.
- Galvanised steel post 100x100mm, powder coated RAL 3020 of 2500mm height fixed in position with individual concrete footings set below ground level with steel reinforcement bracing (Refer to Engineer's drawings for fixing details) - 3no.
- Galvanised steel post 100x100mm, powder coated RAL 3020 of 2000mm height fixed in position with individual concrete footings set below ground level with steel reinforcement bracing (Refer to Engineer's drawings for fixing details) - 2no.
- Galvanised steel post 100x100mm, powder coated RAL 3020 of 1700mm height fixed in position with individual concrete footings set below ground level with steel reinforcement bracing (Refer to Engineer's drawings for fixing details) - 2no.

SOFT LANDSCAPING

- Trees**
- Betula pendula, rb, 20-25cmg 11no.
 - Prunus avium, rb, 20-25cmg 4no.
 - Acer globosum, rb, 30-35cmg 8no.
 - Retained existing trees
- Shrubs**
- Viburnum opulus, br, 120-150cm 10no.
 - Euonymus europaeus, br, 120-150cm 7no.
 - Cornus sanguinea, br, 120-150cm 7no.
 - Cytisus scoparius, br, 120-150cm 2no.
 - Sambucus nigra, br, 120-150cm 6no.
 - Corylus avellana, br, 120-150cm 5no.
- Native groundcover planting mix**
- Rosa canina, CG 2L 3m²
 - Calluna vulgaris, CG 2L 5m²
 - Hypericum calycinum, CG 2L 6m²
 - Hedera helix 'Hibernica', CG 2L 8m²
 - Viburnum opulus 'Compactum', CG 2L 3m²
- Wildflower mix**
NOTE: Allow minimum 1m band of wildflower mix seeding on either side of new paving construction in grass areas, sow at 2 gms/m²



PROPOSED ROAD PROFILE: CH 00m-250m
SCALE: H 1:500, V 1:100

P02	GENERAL AMENDMENTS	KT	RG	XX/XX/XX
P01	PART 8 PLANNING	KT	DRL	03/12/20
Rev	Description	Drawn	Checked	Date

Clifton Scannell Emerson
Associates Limited
Consulting Engineers
Mentec House (1st Floor),
Bakers Point, Pottery Road
Dun Laoghaire, Co. Dublin,
Ireland, A96 K6P3
T: +353 1 288 5006
F: +353 1 283 3466
E: info@csea.ie
W: www.csea.ie

**SOUTH DUBLIN
COUNTY COUNCIL**

Client

**DODDER GREENWAY
PHASE 5
DODDER ROAD LOWER
UPGRADE, SHEET 1 OF 3**

Project

Dwg. Title

Drawn By: KT Date: DEC. 2020
Checked By: DRL Scale: 1:500 @ A1
Project Code: Originator: Zone/Phase Level Type Role Dwg. No.

18_123C

18_123C - CSE - GEN - XX - DR - C - 1431

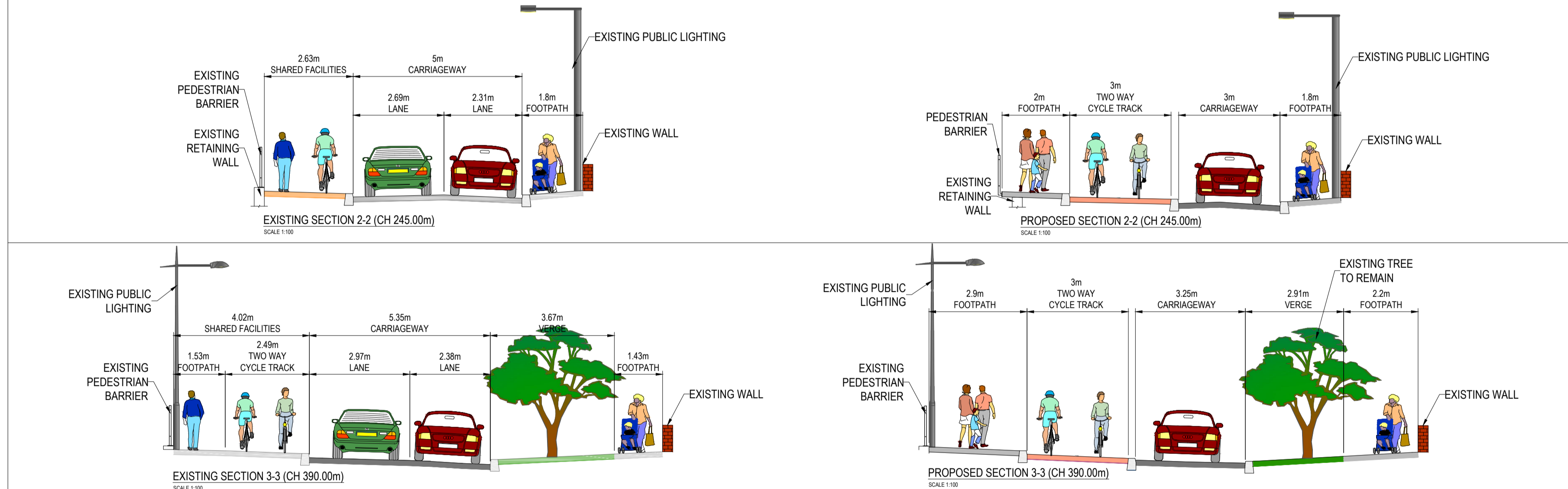
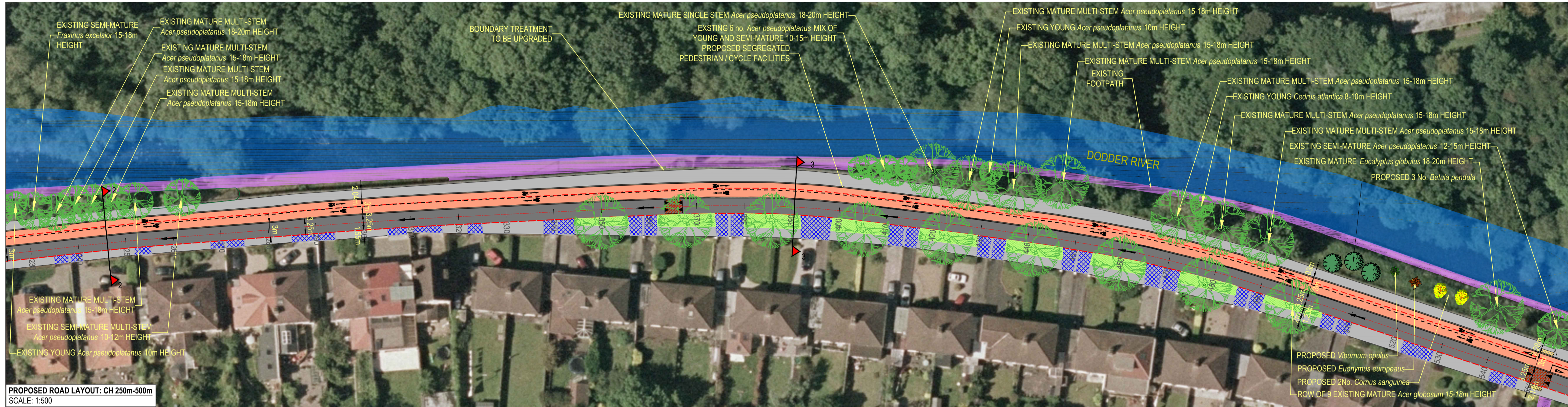
S2 SUITABLE FOR INFORMATION
Status Code Suitability Description

P02 PART 8 PLANNING
Revision Project Status

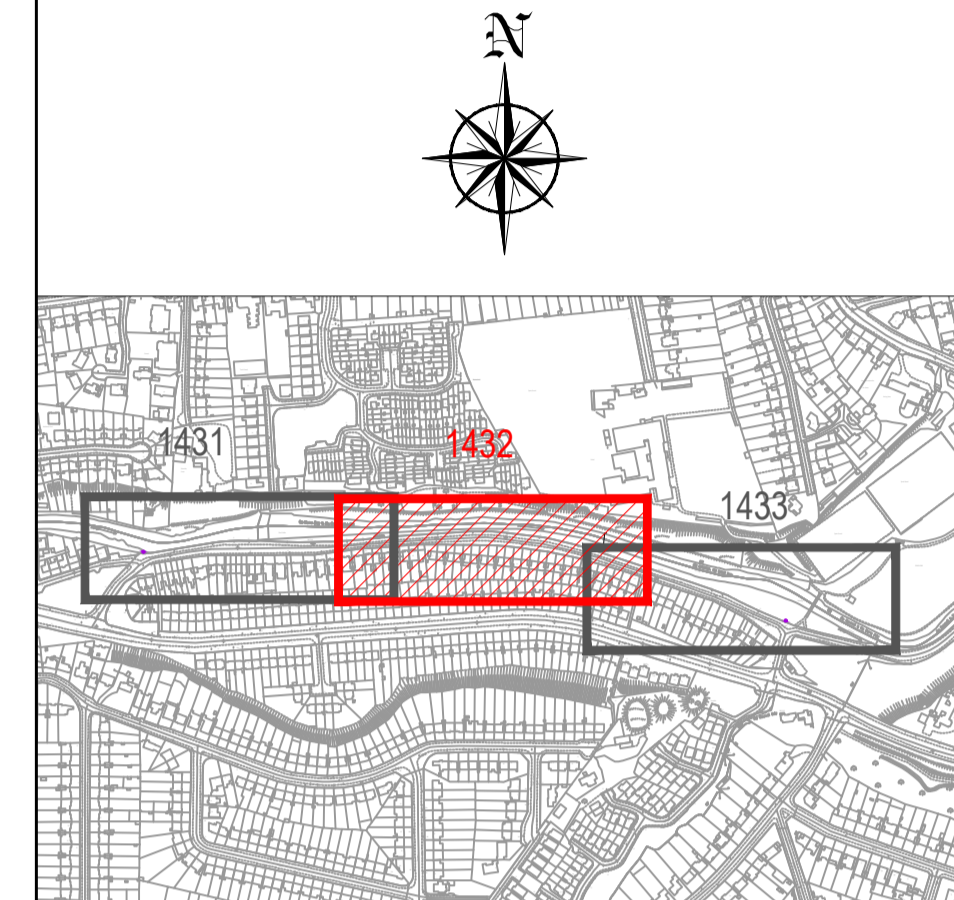
DODDER GREENWAY DODDER ROAD LOWER

DRAWING IS PRODUCED USING THE
IRISH TRANSVERSE MERCATOR (ITM)
GEOGRAPHIC COORDINATE SYSTEM

A1



- NOTE:**
1. Existing native trees on the site shall be preserved where possible, as a part of the landscape design scheme. The Landscape Architect/Arborist shall be consulted at the time of vegetation clearance with regards to ascertaining which trees can viably and safely be preserved as a part of the Landscape construction works.
- HARD LANDSCAPING**
- Galvanised steel post 100x100mm, powder coated RAL 3020 of 1500mm height, fixed in position with individual concrete footings set below ground level with steel reinforcement bracing (Refer to Engineer's drawings for fixing details) - 4no.
 - Galvanised steel post 100x100mm, powder coated RAL 3020 of 2500mm height fixed in position with individual concrete footings set below ground level with steel reinforcement bracing (Refer to Engineer's drawings for fixing details) - 3no.
 - Galvanised steel post 100x100mm, powder coated RAL 3020 of 2000mm height fixed in position with individual concrete footings set below ground level with steel reinforcement bracing (Refer to Engineer's drawings for fixing details) - 2no.
 - Galvanised steel post 100x100mm, powder coated RAL 3020 of 1700mm height fixed in position with individual concrete footings set below ground level with steel reinforcement bracing (Refer to Engineer's drawings for fixing details) - 2no.
- SOFT LANDSCAPING**
- Trees**
- Betula pendula*, rb, 20-25cmg - 11no.
 - Prunus avium*, rb, 20-25cmg - 4no.
 - Acer globosum*, rb, 30-35cmg - 8no.
 - Retained existing trees
- Shrubs**
- Viburnum opulus*, br, 120-150cm - 10no.
 - Euonymus europaeus*, br, 120-150cm - 7no.
 - Cornus sanguinea*, br, 120-150cm - 7no.
 - Cytisus scoparius*, br, 120-150cm - 2no.
 - Sambucus nigra*, br, 120-150cm - 6no.
 - Corylus avellana*, br, 120-150cm - 5no.
- Native groundcover planting mix**
- Rosa canina*, CG 2L - 3m²
 - Calluna vulgaris*, CG 2L - 5m²
 - Hypericum calycinum*, CG 2L - 6m²
 - Hedera helix* 'Hibernica', CG 2L - 8m²
 - Viburnum opulus* 'Compactum', CG 2L - 3m²
- Wildflower mix**
NOTE: Allow minimum 1m band of wildflower mix seeding on either side of new paving construction in grass areas, sow at 2 gms/m²



- LEGEND:**
- PROPOSED SEGREGATED CYCLEPATH
 - PROPOSED CARRIAGEWAY REALIGNMENT
 - PROPOSED SHARED AREA
 - PROPOSED FOOTPATH / CHANNELISING ISLAND
 - EXISTING FOOTPATH
 - PROPOSED TACTILE PAVING (RED)
 - PROPOSED SEGREGATED SHARED CYCLE TRACK - FOOTWAY TACTILE PAVING (BUFF)
 - EXISTING KERB

P02	GENERAL AMENDMENTS	KT	RG	XX/XX/XX
P01	PART 8 PLANNING	KT	DRL	03/12/20

Clifton Scannell Emerson
Associates Limited
Consulting Engineers
Mentec House (1st Floor),
Bakers Point, Pottery Road
Dun Laoghaire, Co. Dublin,
Ireland, A96 K9P3

T: +353 1 288 5006
F: +353 1 283 3466
E: info@csea.ie
W: www.csea.ie

**SOUTH DUBLIN
COUNTY COUNCIL**

Client

**DODDER GREENWAY
PHASE 5
DODDER ROAD LOWER
UPGRADE, SHEET 2 OF 3**

Project

Dwg. Title

Drawn By: KT Date: DEC. 2020

Checked By: DRL Scale: 1:500 @ A1

18_123C

CSEA Job No.

Project Code Originator Zone/Phase Level Type Role Dwg. No.

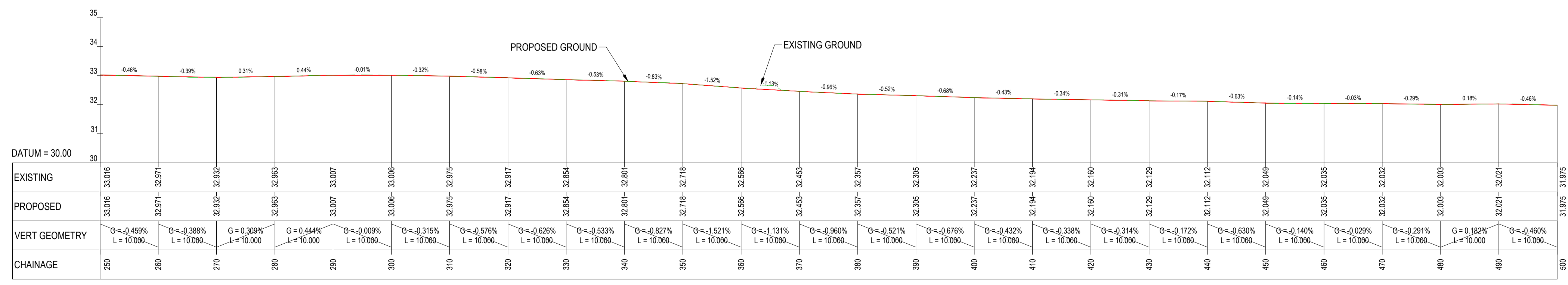
18_123C - CSE - GEN - XX - DR - C - 1432

S2 SUITABLE FOR INFORMATION

Status Code Suitability Description

P02 PART 8 PLANNING

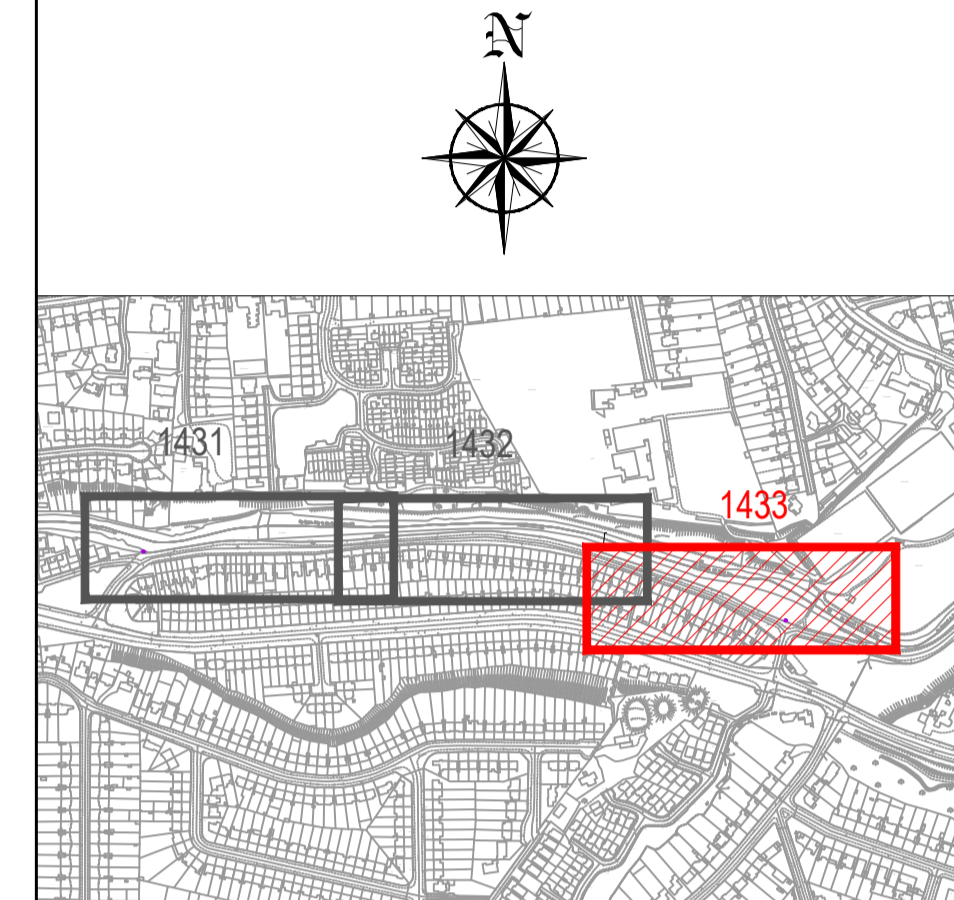
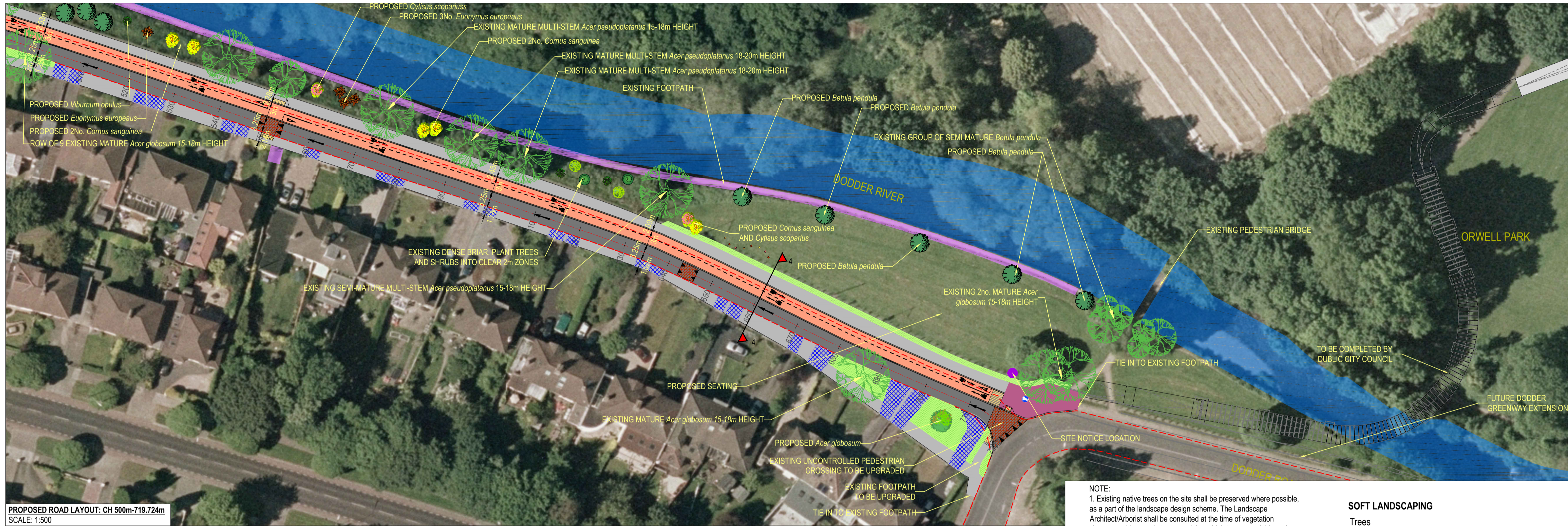
Revision Project Status



DODDER GREENWAY DODDER ROAD LOWER

DRAWING IS PRODUCED USING THE
IRISH TRANSVERSE MERCATOR (ITM)
GEOGRAPHIC COORDINATE SYSTEM

A1



KEY PLAN
NTS

LEGEND:

	PROPOSED SEGREGATED CYCLEPATH
	PROPOSED CARRIAGEWAY REALIGNMENT
	PROPOSED SHARED AREA
	PROPOSED FOOTPATH / CHANELLISING ISLAND
	EXISTING FOOTPATH
	PROPOSED TACTILE PAVING (RED)
	PROPOSED SEGREGATED SHARED CYCLE TRACK - FOOTWAY TACTILE PAVING (BUFF)
	EXISTING KERB

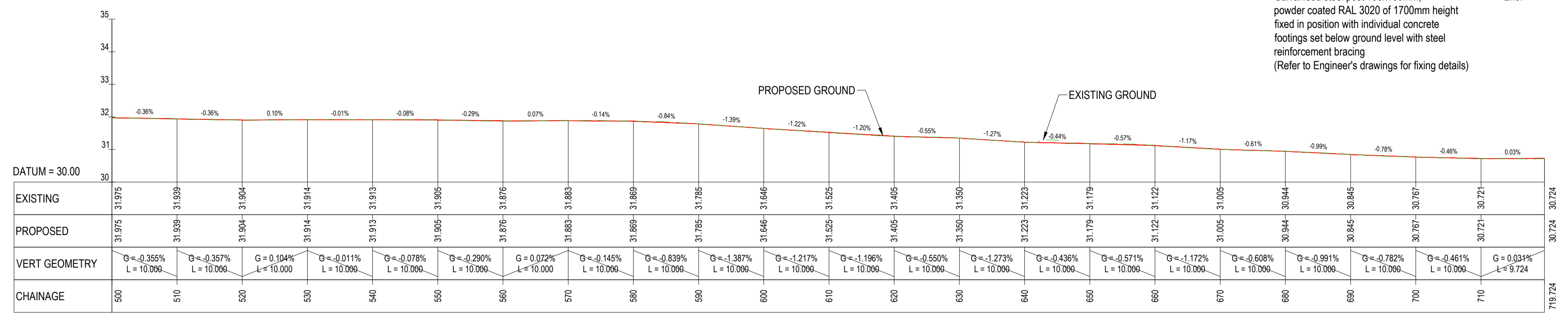
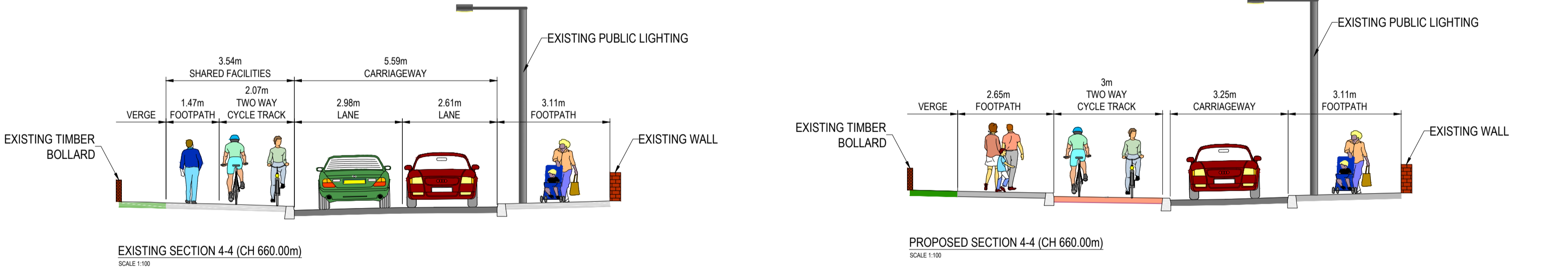
NOTE:
1. Existing native trees on the site shall be preserved where possible, as a part of the landscape design scheme. The Landscape Architect/Arborist shall be consulted at the time of vegetation clearance with regards to ascertaining which trees can viably and safely be preserved as a part of the Landscape construction works.

HARD LANDSCAPING

- Galvanised steel post 100x100mm, powder coated RAL 3020 of 1500mm height, fixed in position with individual concrete footings set below ground level with steel reinforcement bracing (Refer to Engineer's drawings for fixing details) 4no.
- Galvanised steel post 100x100mm, powder coated RAL 3020 of 2500mm height fixed in position with individual concrete footings set below ground level with steel reinforcement bracing (Refer to Engineer's drawings for fixing details) 3no.
- Galvanised steel post 100x100mm, powder coated RAL 3020 of 2000mm height fixed in position with individual concrete footings set below ground level with steel reinforcement bracing (Refer to Engineer's drawings for fixing details) 2no.
- Galvanised steel post 100x100mm, powder coated RAL 3020 of 1700mm height fixed in position with individual concrete footings set below ground level with steel reinforcement bracing (Refer to Engineer's drawings for fixing details) 2no.

SOFT LANDSCAPING

- Trees**
- Betula pendula, rb, 20-25cmg 11no.
 - Prunus avium, rb, 20-25cmg 4no.
 - Acer globosum, rb, 30-35cmg 8no.
 - Retained existing trees
- Shrubs**
- Viburnum opulus, br, 120-150cm 10no.
 - Euonymus europaeus, br, 120-150cm 7no.
 - Cornus sanguinea, br, 120-150cm 7no.
 - Cytisus scoparius, br, 120-150cm 2no.
 - Sambucus nigra, br, 120-150cm 6no.
 - Corylus avellana, br, 120-150cm 5no.
- Native groundcover planting mix**
- Rosa canina, CG 2L 3m² 20%
 - Calluna vulgaris, CG 2L 5m² 20%
 - Hypericum calycinum, CG 2L 6m² 20%
 - Hedera helix 'Hibernica', CG 2L 8m² 20%
 - Viburnum opulus 'Compactum', CG 2L 3m² 20%
- Wildflower mix**
NOTE: Allow minimum 1m band of wildflower mix seeding on either side of new paving construction in grass areas, sow at 2 gms/m²



PROPOSED ROAD PROFILE: CH 500m-719.724m
SCALE: H 1:500, V 1:100

P02	GENERAL AMENDMENTS	KT	RG	XX/XX/XX
P01	PART 8 PLANNING	KT	DRL	03/12/20
Rev	Description	Drawn	Checked	Date

Clifton Scannell Emerson
Associates
Consulting Engineers
Merrett House (1st Floor),
Bakers Point, Pottery Road,
Dun Laoghaire, Co. Dublin,
Ireland, A96 K6P3
T: +353 1 288 5006
F: +353 1 283 3466
E: info@csea.ie
W: www.csea.ie

**SOUTH DUBLIN
COUNTY COUNCIL**

Client
**DODDER GREENWAY
PHASE 5
DODDER ROAD LOWER
UPGRADE, SHEET 3 OF 3**

Project
Dwg. Title
Drawn By: KT Date: DEC. 2020
Checked By: DRL Scale: 1:500 @ A1
18_123C
CSEA Job No.

Project Code	Originator	Zone/Phase	Level	Type	Role	Dwg. No.
18_123C	CSE	GEN	DR	C	1433	

S2 SUITABLE FOR INFORMATION
Status Code Suitability Description
P02 PART 8 PLANNING
Revision Project Status