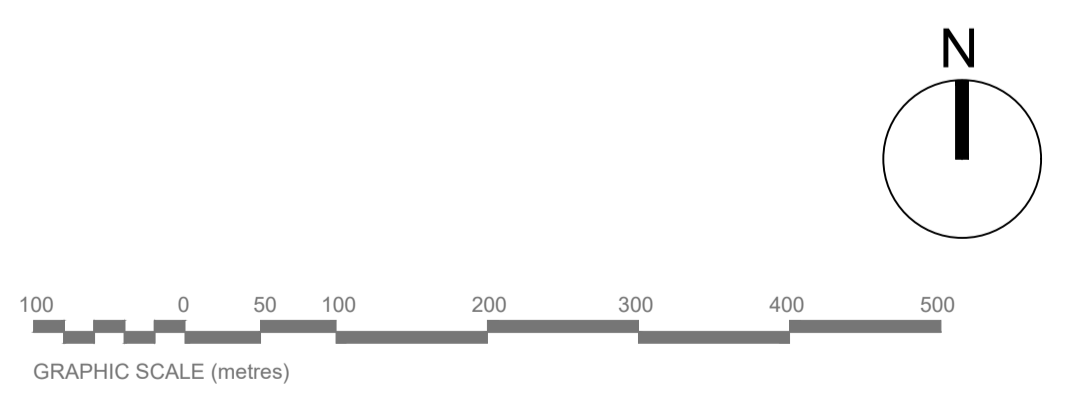


- KEY:**
- Site Extents
20ha (Killinarden Park)+4.5ha (GI Corridor)
 - Existing Contours (0.5m interval)
 - Existing Vegetation-Retained
 - Existing Trees-Retained
Protected in accordance with BS 5837:2012



REVISION	DATE	DESCRIPTION	APPROVED
-	22/03/2021	Part 8	NdeJ

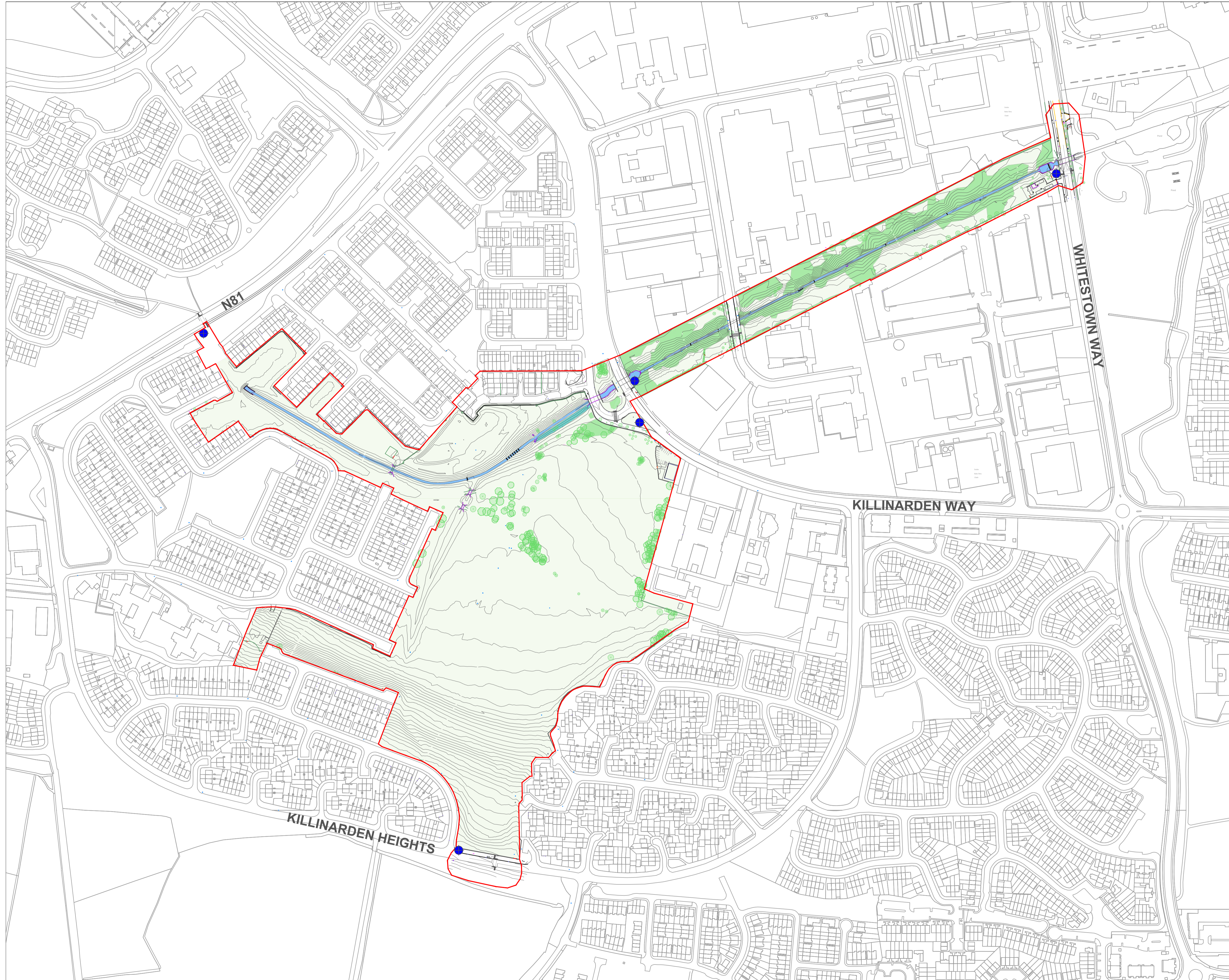
KILLINARDEN PARK AND GREENWAY IN TALLAGHT, DUBLIN 24

DRAWN : SR	STATUS: Planning	DRAWING No. KP-L-001A
CHECKED : NdeJ	SCALE: 1:5000@A1	DATE: April 2021
APPROVED : NdeJ	FORMAT: AutoCAD	CLIENT : South Dublin CoCo
PROJECT MANAGER : -	This drawing must not be either loaned, copied or otherwise reproduced in whole or in part or used for any purpose without the prior written permission of NdeJA	

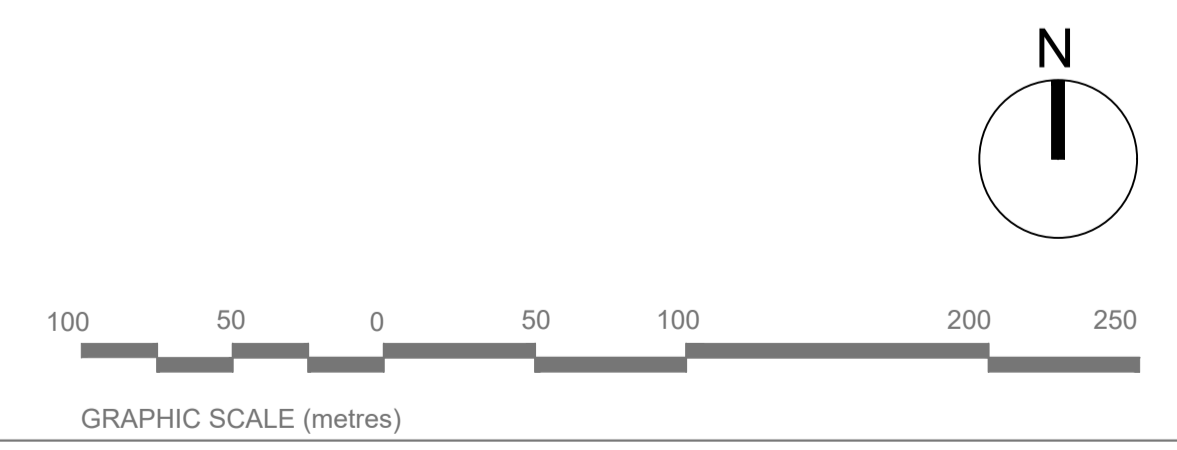
PROJECT: Killinarden Park and Greenway in Tallaght, Dublin 24
TITLE: Context Map

Nicholas de Jong Associates
URBAN DESIGN

REV. -



- KEY:**
- Site Extents
20ha (Killinarden Park)+4.5ha (GI Corridor)
 - Existing Contours (0.5m interval)
 - Existing Vegetation-Retained
 - Existing Trees-Retained
Protected in accordance with BS 5837:2012
 - GS1/ GS4 Calcerous Grassland- Retained
 - Location of Site Notices



REVISION	DATE	DESCRIPTION	APPROVED
-	22/03/2021	Part 8	NdeJ

KILLINARDEN PARK AND GREENWAY IN TALLAGHT, DUBLIN 24

DRAWN : SR	STATUS: Planning	DRAWING No. KP-L-001B
CHECKED : NdeJ	SCALE: 1:2500@A1	DATE: April 2021
APPROVED : NdeJ	FORMAT: AutoCAD	CLIENT : South Dublin CoCo
PROJECT MANAGER : -	This drawing must not be either loaned, copied or otherwise reproduced in whole or in part or used for any purpose without the prior written permission of NdeJA	

PROJECT: Killinarden Park and Greenway in Tallaght, Dublin 24
TITLE: Location Map

Nicholas de Jong Associates
URBAN DESIGN

REV. -