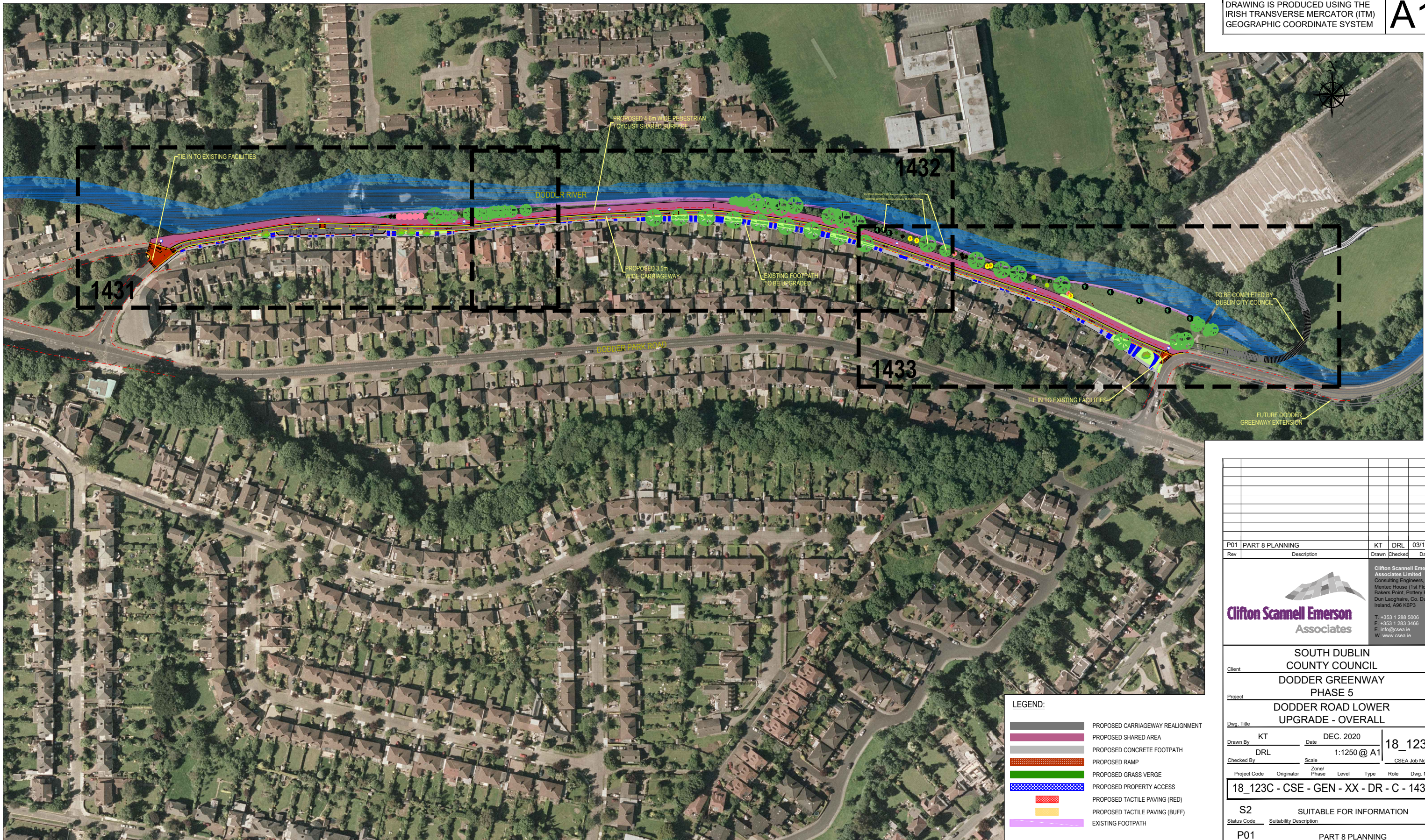


DODDER GREENWAY DODDER ROAD LOWER

DRAWING IS PRODUCED USING THE
IRISH TRANSVERSE MERCATOR (ITM)
GEOGRAPHIC COORDINATE SYSTEM

A1



LEGEND:

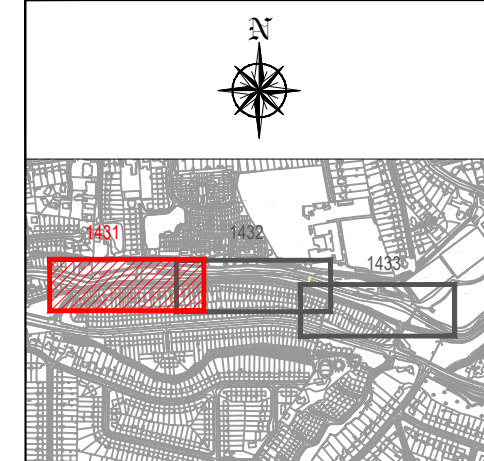
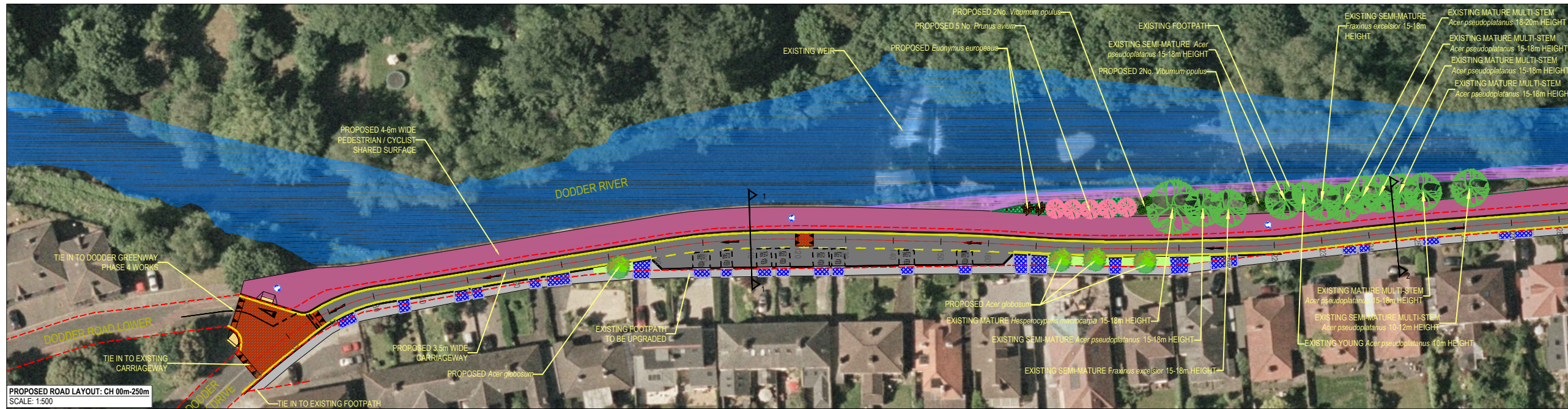
	PROPOSED CARRIAGEWAY REALIGNMENT
	PROPOSED SHARED AREA
	PROPOSED CONCRETE FOOTPATH
	PROPOSED RAMP
	PROPOSED GRASS VERGE
	PROPOSED PROPERTY ACCESS
	PROPOSED TACTILE PAVING (RED)
	PROPOSED TACTILE PAVING (BUFF)
	EXISTING FOOTPATH

P01 PART 8 PLANNING				KT	DRL	03/12/20
Rev	Description	Drawn	Checked	Date		
<p>Clifton Scannell Emerson Associates Limited Consulting Engineers Merrett House (1st Floor), Bakers Point, Pottery Road Dun Laoghaire, Co. Dublin, Ireland, A96 K6P3 T: +353 1 288 5006 F: +353 1 283 3466 E: info@csea.ie W: www.csea.ie</p>						
Client	SOUTH DUBLIN COUNTY COUNCIL					
Project	DODDER GREENWAY PHASE 5 DODDER ROAD LOWER UPGRADE - OVERALL					
Dwg. Title	18_123C					
Drawn By	KT	Date	DEC. 2020		18_123C	
Checked By	DRL	Scale	1:1250 @ A1		CSEA Job No.	
Project Code	Originator	Zone/Phase	Level	Type	Role	Dwg. No.
18_123C	CSE	GEN	XX	DR	C	1430
S2	SUITABLE FOR INFORMATION					
Status Code	Suitability Description					
P01	PART 8 PLANNING					
Revision	Project Status					

DODDER GREENWAY DODDER ROAD LOWER

DRAWING IS PRODUCED USING THE
IRISH TRANSVERSE MERCATOR (ITM)
GEOGRAPHIC COORDINATE SYSTEM

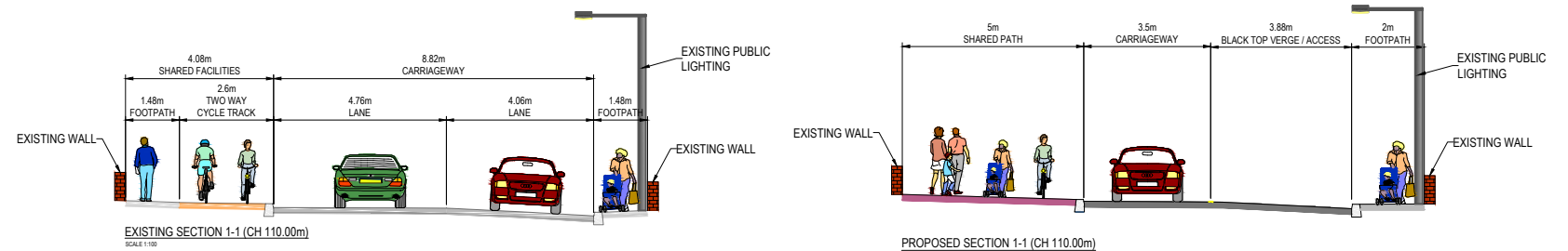
A1



KEY PLAN
NTS

LEGEND:

- PROPOSED CARRIAGEWAY REALIGNMENT
- PROPOSED SHARED AREA
- PROPOSED CONCRETE FOOTPATH
- PROPOSED RAMP
- PROPOSED GRASS VERGE
- PROPOSED PROPERTY ACCESS
- PROPOSED TACTILE PAVING (RED)
- PROPOSED TACTILE PAVING (BUFF)
- EXISTING FOOTPATH



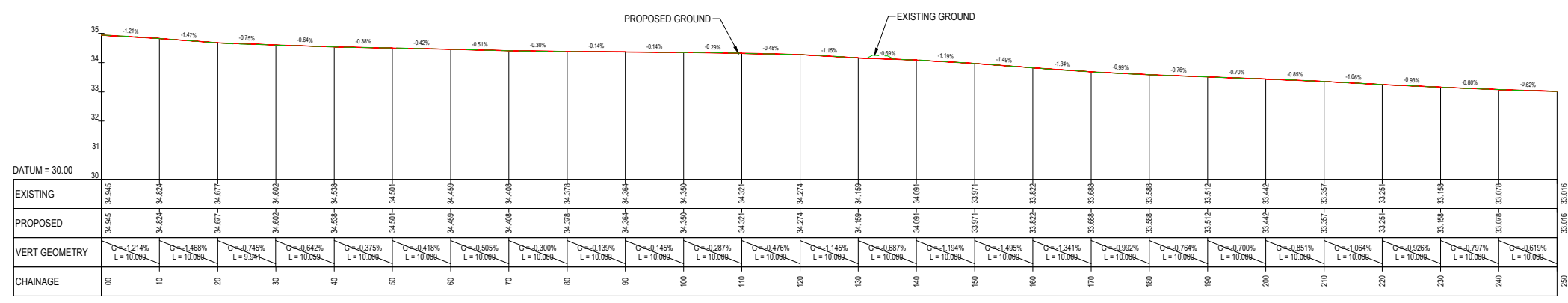
1. Existing native trees on the site shall be preserved where possible, as a part of the landscape design scheme. The Landscape Architect/Arborist shall be consulted at the time of vegetation clearance with regards to ascertaining which trees can viably and safely be preserved as a part of the Landscape construction works.

HARD LANDSCAPING

- Galvanised steel post 100x100mm, powder coated RAL 3020 of 1500mm height, fixed in position with individual concrete footings set below ground level with steel reinforcement bracing (Refer to Engineer's drawings for fixing details) 4no.
- Galvanised steel post 100x100mm, powder coated RAL 3020 of 2500mm height fixed in position with individual concrete footings set below ground level with steel reinforcement bracing (Refer to Engineer's drawings for fixing details) 3no.
- Galvanised steel post 100x100mm, powder coated RAL 3020 of 2000mm height fixed in position with individual concrete footings set below ground level with steel reinforcement bracing (Refer to Engineer's drawings for fixing details) 2no.
- Galvanised steel post 100x100mm, powder coated RAL 3020 of 1700mm height fixed in position with individual concrete footings set below ground level with steel reinforcement bracing (Refer to Engineer's drawings for fixing details) 2no.

SOFT LANDSCAPING

- Trees**
- Betula pendula*, rb, 20-25cmg 11no.
 - Prunus avium*, rb, 20-25cmg 4no.
 - Acer globosum*, rb, 30-35cmg 8no.
 - Retained existing trees
- Shrubs**
- Viburnum opulus*, br, 120-150cm 10no.
 - Euonymus europaeus*, br, 120-150cm 7no.
 - Cornus sanguinea*, br, 120-150cm 7no.
 - Cytisus scoparius*, br, 120-150cm 2no.
 - Sambucus nigra*, br, 120-150cm 6no.
 - Corylus avellana*, br, 120-150cm 5no.
- Native groundcover planting mix**
- Rosa canina*, CG 2L 3m²
 - Calluna vulgaris*, CG 2L 5m²
 - Hypericum calycinum*, CG 2L 6m²
 - Hedera helix* 'Hibernica', CG 2L 8m²
 - Viburnum opulus* 'Compactum', CG 2L 3m²
- Wildflower mix**
NOTE: Allow minimum 1m band of wildflower mix seeding on either side of new paving construction in grass areas, sow at 2 gms/m²



PROPOSED ROAD PROFILE: CH 00m-250m
SCALE: H 1:500, V 1:100

Rev	Description	Drawn	Checked	Date
P01	PART 8 PLANNING	KT	DRL	03/12/20

Clifton Scannell Emerson Associates Limited
Consulting Engineers
Montez House (1st Floor),
Bakers Point, Pottery Road
Dun Laoghaire, Co. Dublin,
Ireland, A96 K6P3
T: +353 1 288 5006
F: +353 1 283 3466
E: info@csea.ie
W: www.csea.ie

Client
SOUTH DUBLIN
COUNTY COUNCIL

Project
DODDER GREENWAY
PHASE 5
DODDER ROAD LOWER
UPGRADE, SHEET 1 OF 3

Dwg. Title
18_123C

Drawn By KT **Date** DEC. 2020

Checked By DRL **Scale** 1:500 @ A1

Project Code Originator Phase/Level Type Role Dwg. No.
18_123C - CSE - GEN - XX - DR - C - 1431

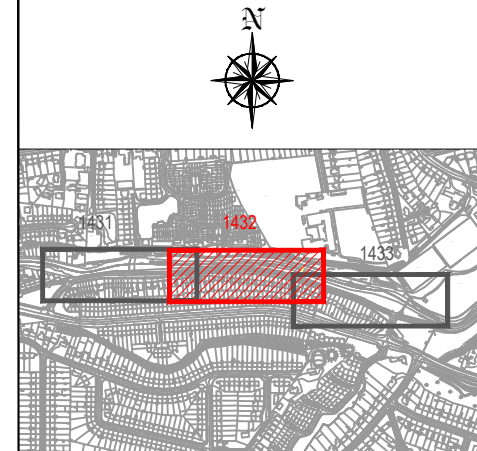
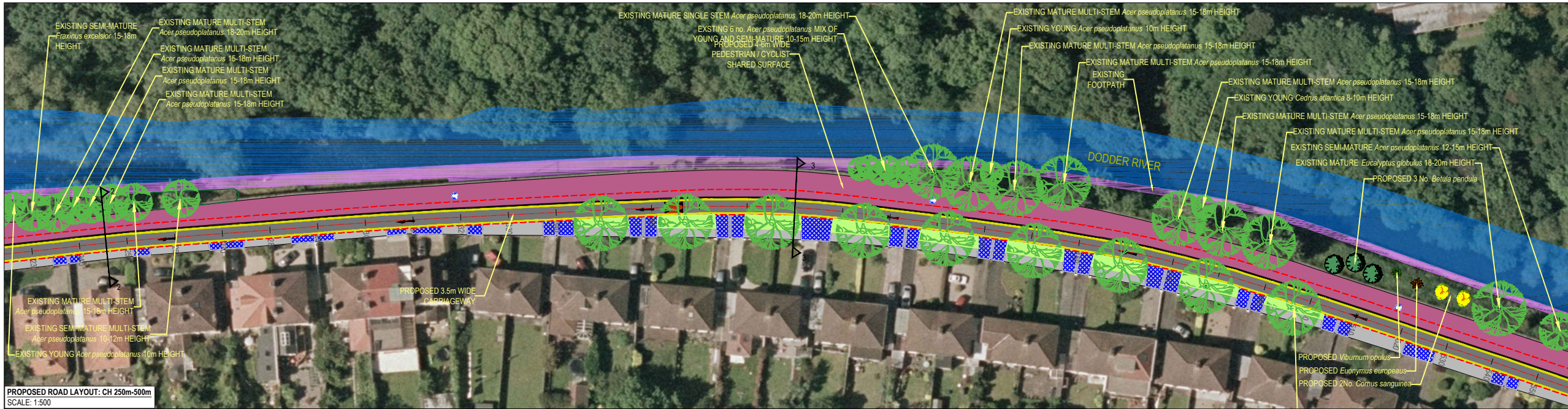
S2 SUITABLE FOR INFORMATION
Status Code Suitability Description

P01 PART 8 PLANNING
Revision Project Status

DODDER GREENWAY DODDER ROAD LOWER

DRAWING IS PRODUCED USING THE IRISH TRANSVERSE MERCATOR (ITM) GEOGRAPHIC COORDINATE SYSTEM

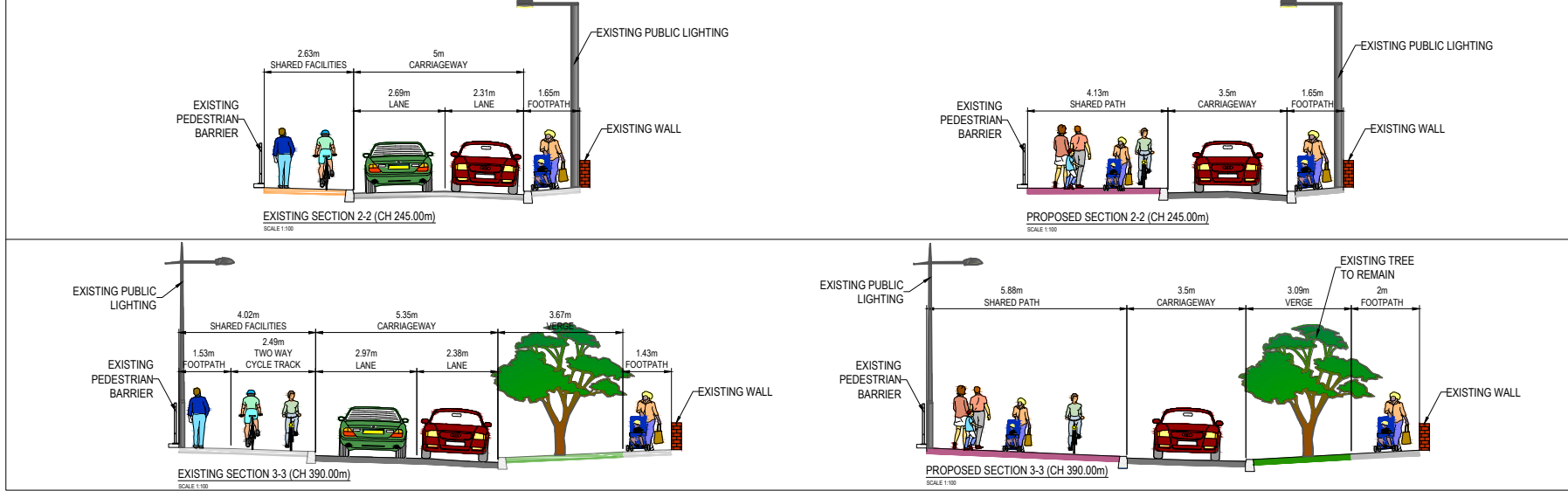
A1



KEY PLAN
NTS

LEGEND:

- PROPOSED CARRIAGEWAY REALIGNMENT
- PROPOSED SHARED AREA
- PROPOSED CONCRETE FOOTPATH
- PROPOSED RAMP
- PROPOSED GRASS VERGE
- PROPOSED PROPERTY ACCESS
- PROPOSED TACTILE PAVING (RED)
- PROPOSED TACTILE PAVING (BUFF)
- EXISTING FOOTPATH



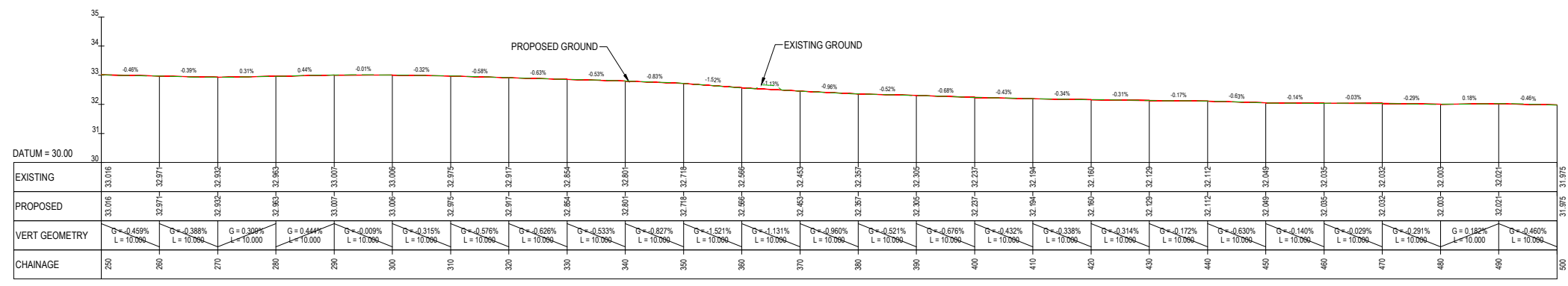
NOTE:
1. Existing native trees on the site shall be preserved where possible, as a part of the landscape design scheme. The Landscape Architect/Arborist shall be consulted at the time of vegetation clearance with regards to ascertaining which trees can viably and safely be preserved as a part of the Landscape construction works.

HARD LANDSCAPING

- Galvanised steel post 100x100mm, powder coated RAL 3020 of 1500mm height, fixed in position with individual concrete footings set below ground level with steel reinforcement bracing (Refer to Engineer's drawings for fixing details) 4no.
- Galvanised steel post 100x100mm, powder coated RAL 3020 of 2500mm height fixed in position with individual concrete footings set below ground level with steel reinforcement bracing (Refer to Engineer's drawings for fixing details) 3no.
- Galvanised steel post 100x100mm, powder coated RAL 3020 of 2000mm height fixed in position with individual concrete footings set below ground level with steel reinforcement bracing (Refer to Engineer's drawings for fixing details) 2no.
- Galvanised steel post 100x100mm, powder coated RAL 3020 of 1700mm height fixed in position with individual concrete footings set below ground level with steel reinforcement bracing (Refer to Engineer's drawings for fixing details) 2no.

SOFT LANDSCAPING

- Trees**
- Betula pendula*, rb, 20-25cmg 11no.
 - Prunus avium*, rb, 20-25cmg 4no.
 - Acer globosum*, rb, 30-35cmg 8no.
 - Retained existing trees
- Shrubs**
- Viburnum opulus*, br, 120-150cm 10no.
 - Euonymus europaeus*, br, 120-150cm 7no.
 - Cornus sanguinea*, br, 120-150cm 7no.
 - Cytisus scoparius*, br, 120-150cm 2no.
 - Sambucus nigra*, br, 120-150cm 6no.
 - Corylus avellana*, br, 120-150cm 5no.
- Native groundcover planting mix**
- Rosa canina*, CG 2L 3m²
 - Calluna vulgaris*, CG 2L 5m²
 - Hypericum calycinum*, CG 2L 6m²
 - Hedera helix 'Hibernica'*, CG 2L 8m²
 - Viburnum opulus 'Compactum'*, CG 2L 3m²
- Wildflower mix**
NOTE: Allow minimum 1m band of wildflower mix seeding on either side of new paving construction in grass areas, sow at 2 gms/m²



PROPOSED ROAD PROFILE: CH 250m-500m
SCALE: H 1:500, V 1:100

Rev	Description	KT	DRL	03/12/20
P01	PART 8 PLANNING			

Clifton Scannell Emerson
Associates
Consulting Engineers
Merrett House (1st Floor),
Bakers Point, Pottery Road
Dun Laoghaire, Co. Dublin,
Ireland, A96 K6P3
T: +353 1 288 5006
F: +353 1 283 3466
E: info@csea.ie
W: www.csea.ie

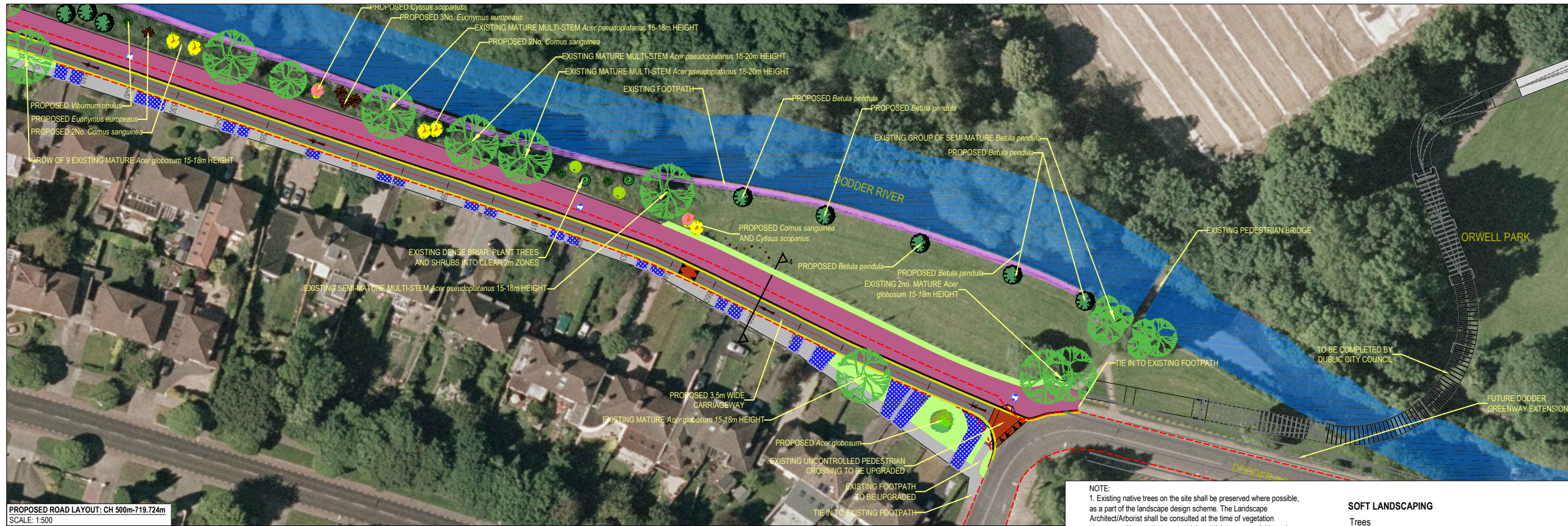
Client: SOUTH DUBLIN COUNTY COUNCIL
Project: DODDER GREENWAY PHASE 5
DODDER ROAD LOWER UPGRADE, SHEET 2 OF 3
Dwg. Title: 18_123C
Drawn By: KT Date: DEC. 2020
Checked By: DRL Scale: 1:500 @ A1
Project Code: Originator: Phase/Level: Type: Role: Dwg. No.

S2 SUITABLE FOR INFORMATION
Status Code: Suitability Description
P01 PART 8 PLANNING
Revision: Project Status

DODDER GREENWAY DODDER ROAD LOWER

DRAWING IS PRODUCED USING THE
IRISH TRANSVERSE MERCATOR (ITM)
GEOGRAPHIC COORDINATE SYSTEM

A1



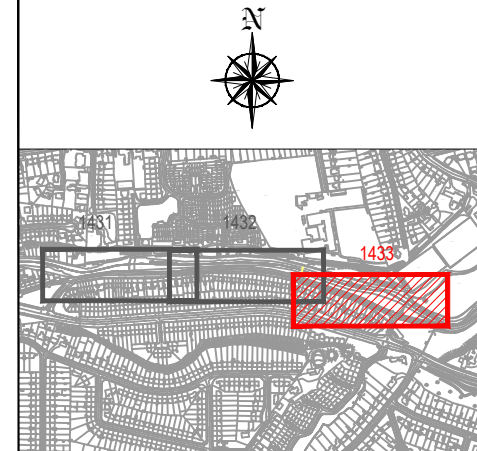
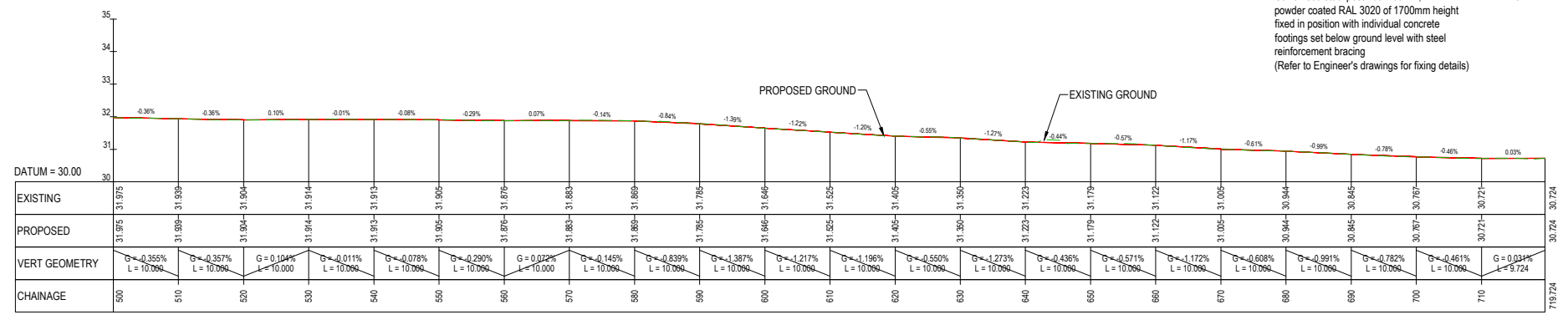
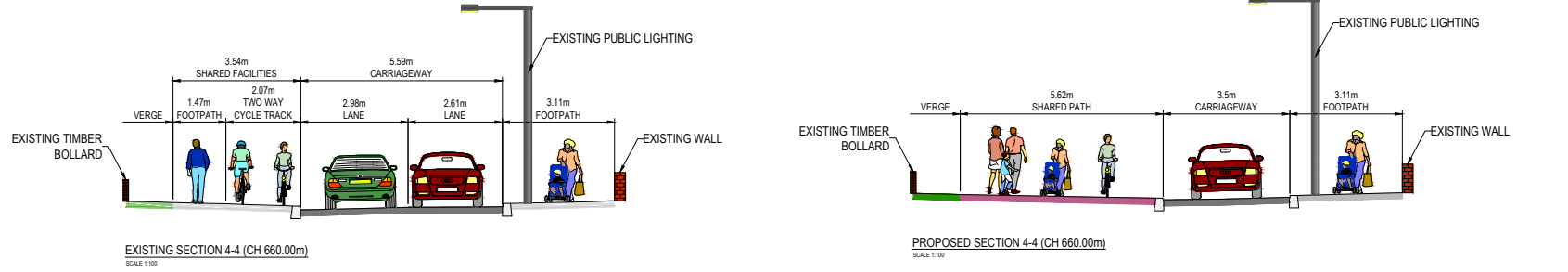
NOTE:
1. Existing native trees on the site shall be preserved where possible, as a part of the landscape design scheme. The Landscape Architect/Arborist shall be consulted at the time of vegetation clearance with regards to ascertaining which trees can viably and safely be preserved as a part of the Landscape construction works.

HARD LANDSCAPING

- 4no. Galvanised steel post 100x100mm, powder coated RAL 3020 of 1500mm height, fixed in position with individual concrete footings set below ground level with steel reinforcement bracing (Refer to Engineer's drawings for fixing details)
- 3no. Galvanised steel post 100x100mm, powder coated RAL 3020 of 2500mm height fixed in position with individual concrete footings set below ground level with steel reinforcement bracing (Refer to Engineer's drawings for fixing details)
- 2no. Galvanised steel post 100x100mm, powder coated RAL 3020 of 2000mm height fixed in position with individual concrete footings set below ground level with steel reinforcement bracing (Refer to Engineer's drawings for fixing details)
- 2no. Galvanised steel post 100x100mm, powder coated RAL 3020 of 1700mm height fixed in position with individual concrete footings set below ground level with steel reinforcement bracing (Refer to Engineer's drawings for fixing details)

SOFT LANDSCAPING

- Trees**
- 11no. *Betula pendula*, rb, 20-25cm
 - 4no. *Prunus avium*, rb, 20-25cm
 - 8no. *Acer globosum*, rb, 30-35cm
 - Retained existing trees
- Shrubs**
- 10no. *Viburnum opulus*, br, 120-150cm
 - 7no. *Euonymus europaeus*, br, 120-150cm
 - 7no. *Cornus sanguinea*, br, 120-150cm
 - 2no. *Cytisus scoparius*, br, 120-150cm
 - 6no. *Sambucus nigra*, br, 120-150cm
 - 5no. *Corylus avellana*, br, 120-150cm
- Wildflower mix**
- 3m² 20% *Rosa canina*, CG 2L
 - 5m² 20% *Calluna vulgaris*, CG 2L
 - 6m² 20% *Hypericum calycinum*, CG 2L
 - 8m² 20% *Hedera helix* 'Hibernica', CG 2L
 - 3m² 20% *Viburnum opulus* 'Compactum', CG 2L
- NOTE: Allow minimum 1m band of wildflower mix seeding on either side of new paving construction in grass areas, sow at 2 gsm/m²



LEGEND:

- PROPOSED CARRIAGEWAY REALIGNMENT
- PROPOSED SHARED AREA
- PROPOSED CONCRETE FOOTPATH
- PROPOSED RAMP
- PROPOSED GRASS VERGE
- PROPOSED PROPERTY ACCESS
- PROPOSED TACTILE PAVING (RED)
- PROPOSED TACTILE PAVING (BUFF)
- EXISTING FOOTPATH

Rev	Description	Drawn	Checked	Date
P01	PART 8 PLANNING	KT	DRL	03/12/20

Clifton Scannell Emerson
Associates Limited
Consulting Engineers
Merrett House (1st Floor),
Bakers Point, Pottery Road
Dun Laoghaire, Co. Dublin,
Ireland, A96 K6P3

T: +353 1 288 5006
F: +353 1 283 3466
E: info@csea.ie
W: www.csea.ie

**SOUTH DUBLIN
COUNTY COUNCIL**

Client
**DODDER GREENWAY
PHASE 5
DODDER ROAD LOWER
UPGRADE, SHEET 3 OF 3**

Project
Dwg. Title
Drawn By: KT Date: DEC. 2020
Checked By: DRL Scale: 1:500 @ A1
18_123C

Project Code: 18_123C - CSE - GEN - XX - DR - C - 1433

Status Code: S2 SUITABLE FOR INFORMATION
Project Status: P01 PART 8 PLANNING