



DUBLIN FIRE BRIGADE

INCIDENT REPORT

**Commercial Fire
Incident Number DF-21-342**

Thornton's Recycling Plant

Killeen Rd

Ballyfermot

Saturday 9th January 2021

| | |
|----------------|-------------------------------|
| Version. | 1 |
| Authorised by. | CFO |
| Date of issue. | 11 th January 2021 |

Background

The premises, Thornton's Recycling Plant is a waste recycling plant, located on the Killeen Rd Ballyfermot. It is a three (3) acre site, located in an industrial area on the outskirts of Ballyfermot, a suburb to the west of the city. It is located between the railway line and the Grand Canal at the 7th lough. (See Photo 1)



Photo (1) External View of Thornton's Recycling Plant

Location

Thornton's Recycling is located in an industrial area on the outskirts of Ballyfermot, a suburb to the west of the city. It is located between the railway line and the Grand Canal at the 7th lough. To the east of the plant is the Kylemore Park industrial Estate and to the west is the now disused Sempritt Factory and Park west Industrial Park.(See Fig 1 &Photo 1 below)

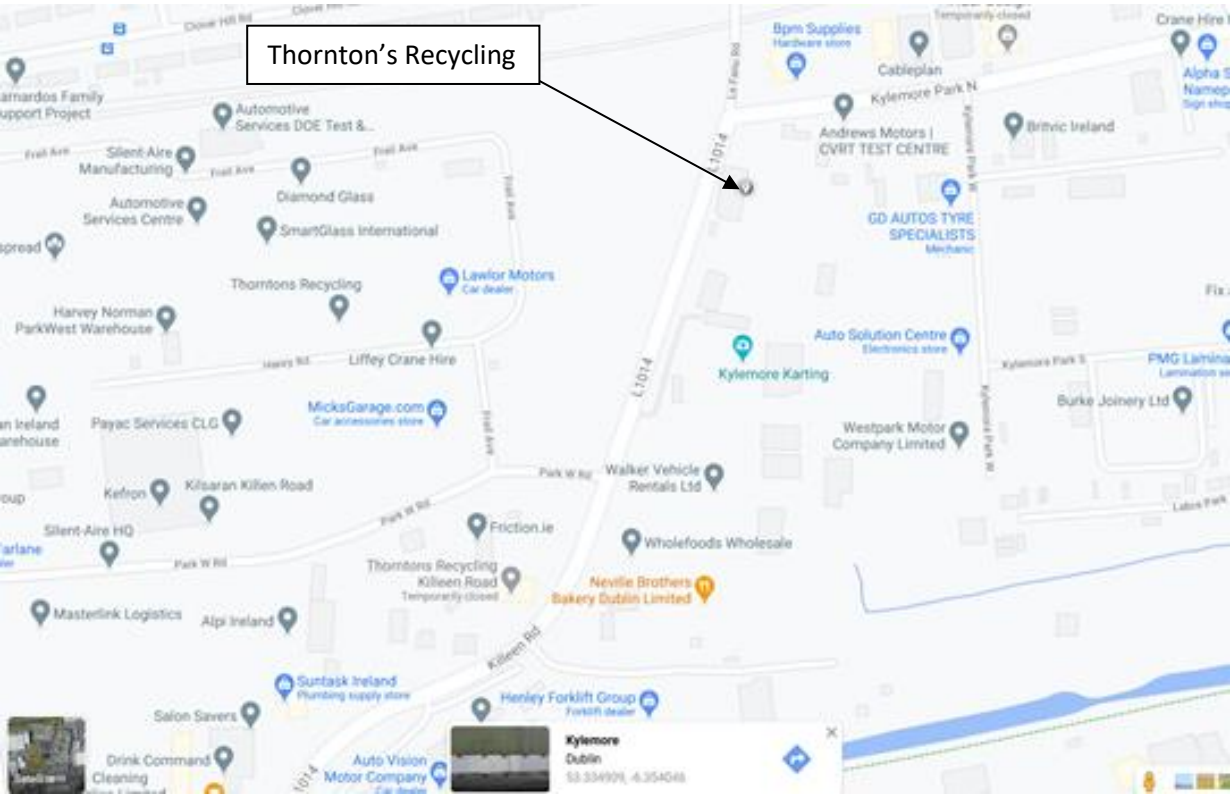


Fig 1. Incident Location



Photo 1 Incident Location

Call Taking and Dispatch

On Saturday 9th January 2021 at 19:06, (7:09 PM), a call was received at the Dublin Fire and Ambulance Eastern Regional Control Centre (ERCC) Townsend St Dublin 2, reporting a Fire Industrial at Thornton's Recycling, Killeen Rd, Ballyfermot. The call was categorised as Fire Industrial.

Resources Assigned

The following Dublin Fire Brigade (DFB) appliances (Fire Tenders) were dispatched as per the pre determined attendance (PDA) for the premises and fire descriptor. DN12A2, DN19A1, DN21A2, from Dolphins barn, Blanchardstown and Tara St fire stations, the nearest available stations to the incident. The local District Officer, DO Bravo District, call sign, DN12R1 was also assigned. On the night of 9th January 2021 this was Acting District Officer Ken Monaghan. A turntable ladder DN21H1 was also dispatched from HQ Station. All units were dispatched at 19:10 and registered mobile for incident at 19:11.

On Arrival

On arrival, a defensive tactical mode was declared and additional resources requested. Initially one additional pump was requested. This brought the number of pumps to four. A short time later, a fifth pump was requested. Initial attending crews remained in defensive mode and began firefighting operations.

The initial fire-fighting operation concentrated on preventing fire spread to the offices and ESB sub-station at the entrance gate and preventing fire spread along the main building directly opposite the main entrance gate.

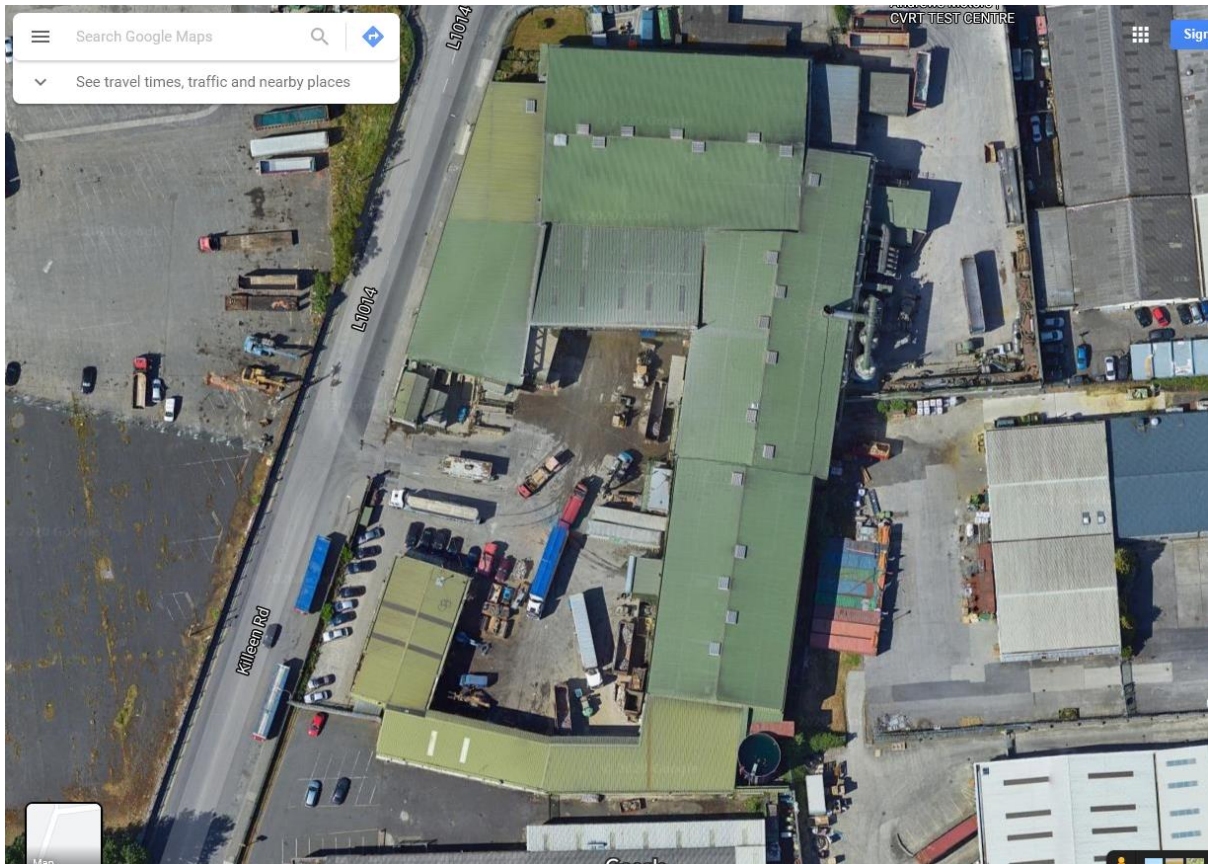
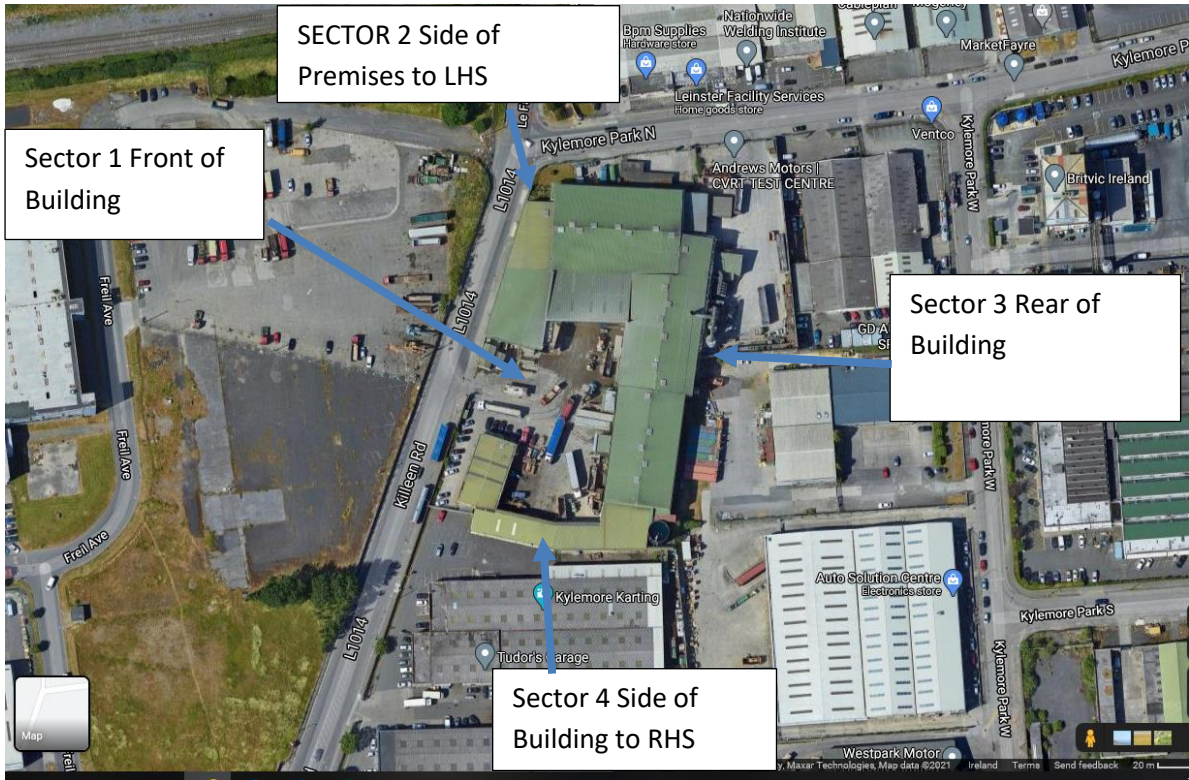
At this point all fire-fighting was concentrated inside the main yard in sector one.

Escalation process as part of the strategy

On arrival a defensive tactical mode was declared and additional resources requested. These included a water tanker from Phibsborough Station, an additional pump, DN22A1 from Dun Laoghaire and the environmental unit from HQ station.

Senior Officers were also informed of the incident and attended. Third Officer Paul O'Reilly was informed when the incident was escalated to four pumps and attended immediately at 19:36. On arrival AT 19:57 T/O O'Reilly assumed command of the incident and command support informed ERCC that he was now the Incident Commander.

Sectorisation of the fire ground was established, with resources allocated to each side of the building to prevent fire spread to adjoining premises and instigate fire- fighting operations in these sectors. See Photo



Sector 2 was established briefly to prevent fire spread to cables passing close to that end of the building. This sector was closed a short time later and the pump assigned to it reallocated to the water sector.

Additionally, to augment the water supply a water sector was established, to specifically pump water from the Grand canal, .4 of a KM away. Three fire pumps were required for this task. A water relay was established and both the turntable ladder and environmental unit were “fed” from this water supply. This greatly alleviated the need for mains supplied firefighting water.

A drone was also utilised to gain an overview of the incident.

As the number of appliances attending increased Assistant Chief Fire Officer Mary O’Brien was also informed and attended immediately arriving in attendance at 20:26.

The Chief Fire Officer, Mr Dennis Keeley on hearing of the incident also attended in an advisory capacity but did not assume command.

The high volume hose layer was requested to the fire ground and mobilised. This was used to replace the initial water relay established from the Grand Canal. This proved most effective and allowed the number of pumping appliances in attendance to be reduced from nine to four, thereby freeing resources to be withdrawn from the incident.

External Agencies

An Garda Síochána, South Dublin County Council and DCC Water Works and the ESB, were also requested and attended. Agencies attended as outlined below

| | |
|-------------------|--------------|
| An Garda Síochána | 19:30 approx |
| Water Works | 19:55 |
| SDCC | 20:20 |
| ESB | 20:04 |

Use of Social Media and Advice to the Public

DFB utilised their social media platforms, Facebook and Twitter to disseminate information to the public concerning the incident. This information included, requesting the public to stay away from the area, to remain indoors and to keep doors and windows closed. Motorists were also advised to avoid the area.

Closure of Incident

At 01:20 approx having replaced the water relay with high volume hose, the incident was scaled down from nine to four pumps with a district officer in attendance. These crews continued to fight and damped down the fire. At 04:00 the district officer suspended the operation until first light. The scene was handed over to An Garda Síochána. Dublin Fire Brigade are not mandated to investigate the cause or source of fire this is the responsibility of An Garda Síochána.

Fire Crews continued damping down on Monday 11th as on site staff turned-over some of the on-site material.

Post Incident

On returning to station all crews involved cleaned equipment and vehicles and were facilitated with welfare breaks.