



Comhairle Contae
Átha Cliath Theas
South Dublin County Council

February 2021

Chief Executive's Report

North Clondalkin Library

About the Chief Executive's Report

South Dublin County Council's Chief Executive's Report is presented to elected members at Council every month and details important achievements across our various departments whilst highlighting key statistics and images from events that took place that month.

The report also highlights major news pieces and puts a focus on an area of the Council that doesn't always get the attention it deserves.

Contents



04 LUPT

Highlights from Land Use Planning and Transportation.



06 HOUSING SOCIAL AND COMMUNITY DEVELOPMENT



08 ECONOMIC ENTERPRISE AND TOURISM DEVELOPMENT

22

Statistics Report



24

Finance Report

25

Images of the Month

Features

14 FLOOD ALLEVIATION

Planning approval has been granted for the Whitechurch Stream Flood Alleviation Scheme.

16 LUCAN ENHANCEMENTS

The Council has appointed DHB Architects to design public realm enhancements in Lucan Village.

18 COUNTY DEVELOPMENT PLAN

The Council held online meetings on the pre-draft stage of the County Development Plan 2022 - 2028.

20 COUNCIL FOCUS

A look at the Council's 2021 Annual Service Delivery Plan.



10

CORPORATE PERFORMANCE AND CHANGE MANAGEMENT



12

ENVIRONMENT WATER AND CLIMATE CHANGE



LAND USE PLANNING AND TRANSPORTATION

Naas Road Planning Framework

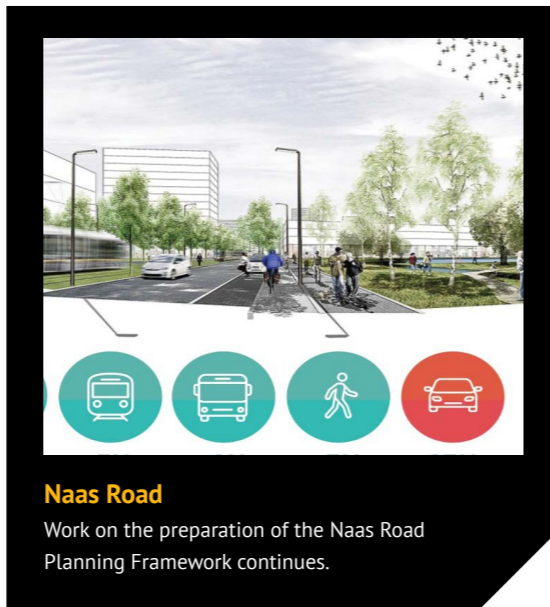
During the second half of 2020, the Naas Road Planning Framework masterplan team prepared a Stage 1 baseline report. This technical report provides information on the existing situation across the Naas Road area and what opportunities there are to shape the regeneration of these strategic lands.

As part of this work, a series of meetings were held with key stakeholders and Councillors. These meetings helped give the masterplan team a full understanding of the area.

Alongside this, the team have been identifying best practice from across the world and how these

practices might inform how the regeneration of Naas Road lands may come forward over time. Informed by the Stage 1 report, the next stage is to test some regeneration scenarios over the first half of the year and then settle on a preferred method.

As part of this work, there will be more engagement with elected members, stakeholders, and a full public consultation in the latter part of the year.



Transport Strategy

From November 2020 to 22 January 2021, the National Transport Authority (NTA) launched a public consultation on an Issues Paper for the review of the Greater Dublin Area (GDA) Transport Strategy, which was the first stage of a review of the current strategy.

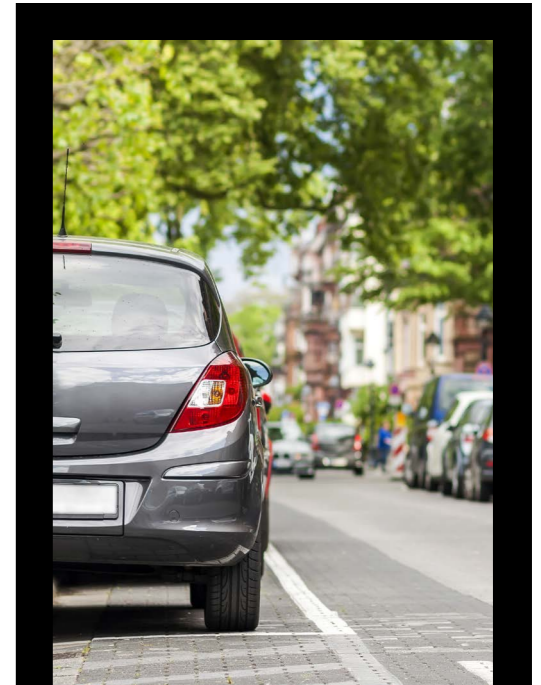
Informed by responses to the Issues Paper consultation, the NTA will produce a draft plan which will also go out to public consultation during the summer of 2021. The NTA has established a working group to monitor progress on the preparation of the final strategy.

Bike Parking

The Council is progressing work to deliver new and improved cycle lanes across the County. Alongside this, it is essential the Council also ensure the provision of adequate bike parking facilities for people.

In 2020 the Council directly installed bike parking spaces for 254 bikes across the County. This work included bike parking for approximately 160 bikes at several schools, and areas for over 90 bikes across town and district centres, including many cargo bike stands. The Council is now putting together plans to deliver an increased number of stands across the County in 2021. These will be provided at schools, town centres, civic buildings and playgrounds.

Proposals for the delivery of bike parking will be presented alongside the finalised Cycle South Dublin programme considered by Council in 2021.



Parking Bye Laws

In the summer of 2020, the Council ran a public consultation on the proposed revisions to the Countywide Parking Bye-Laws and then discussed responses with elected members with changes proposed following those meetings. Following a further round of consultations, a final set of Parking Bye Laws is now being prepared for consideration by Council.



Car bike ports are being trialled.

HOUSING SOCIAL AND COMMUNITY DEVELOPMENT



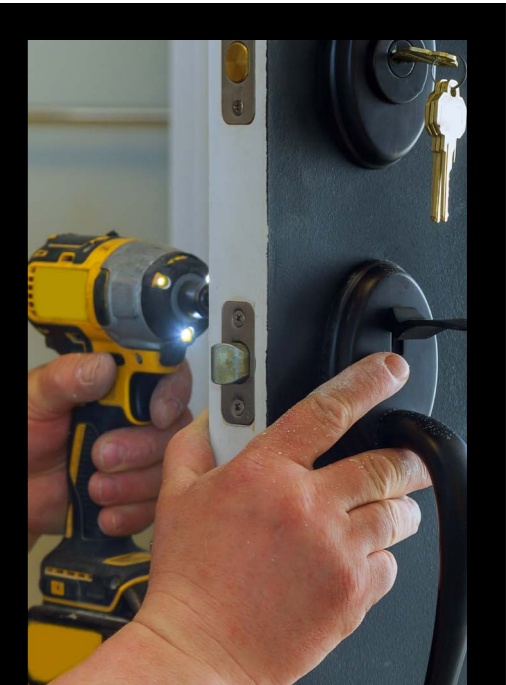
Age-Friendly Digital Supports

South Dublin County's population is ageing and more people are living longer. Supporting older people to live with dignity and independence and be engaged in their local communities is a core aim of the Council's age-friendly initiatives.

A HSE Health and Wellbeing grant provided to South Dublin County Council is being used to provide tablets with one year of mobile data and support, WIFI functionality and training for residents in a local care home on a pilot basis.

This digital support for older people will help in connecting with family and loved ones during the current circumstances.

The grant was an initiative of the national Age Friendly Ireland shared service working collaboratively with the HSE Health and Wellbeing team.



Home Security Scheme

The Council's Home Security Scheme is open for applications from older and/or vulnerable persons living in their privately owned accommodation. Applications will be managed on a first come first served basis with only one lock available per household. The closing date for applications is Thursday 25 March 2021 or earlier if the scheme is fully subscribed. More details are available on www.sdcc.ie.

Designated Essential Social Housing Construction Sites

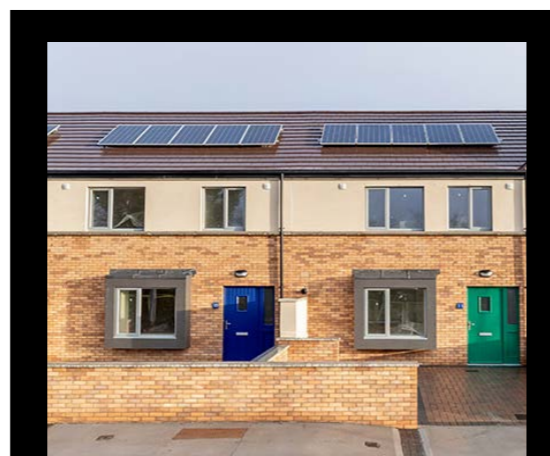
Following the re-introduction of enhanced measures for preventing the spread of COVID-19, including the closure of non-essential construction sites from 8 January 2021, certain social housing projects in the County have been designated as essential projects.

These are Council or AHB projects, funded by the Department of Housing, Local Government and Heritage and due for completion by 28 February 2021.

Ten sites and 19 individual properties totalling 347 new homes were designated as essential sites in South Dublin County including some projects substantially com-

pleted in 2020 where additional site works will complete the social housing development for occupation as well as other sites due for completion in the first two months of 2021.

Sites in Clondalkin, Ballyboden, Ballycullen, Newcastle, Lucan and Adamstown are included along individual properties being delivered through leasing for social housing.



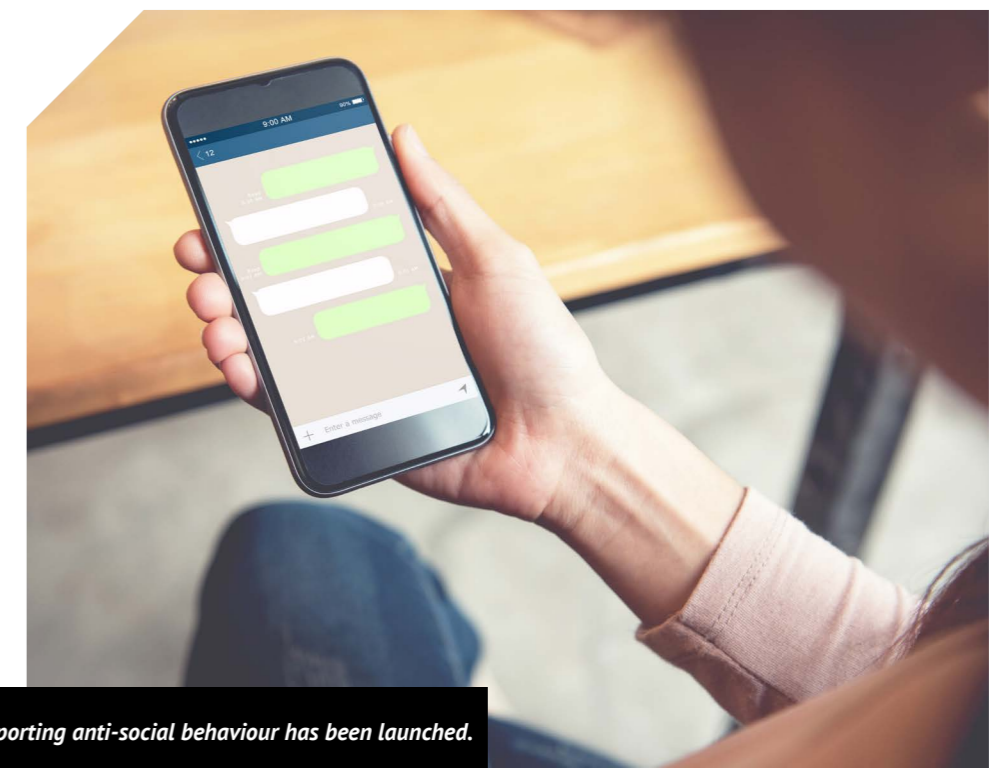
Designated Essential Sites

Several housing sites in South Dublin County were designated as essential.

Anti-Social Behaviour

As part of our objective to create safer communities for residents, and particularly given the challenges with having estate management clinics/meetings during COVID-19, the Council has introduced a new and discreet way for reporting anti-social behaviour by tenants of South Dublin County Council via WhatsApp.

Any text, picture, video information relating to anti-social behaviour can be reported in confidence via WhatsApp to 086 0602586. Please note that this number is not monitored for incoming calls



A new way of reporting anti-social behaviour has been launched.

ECONOMIC ENTERPRISE AND TOURISM DEVELOPMENT



Innovation Quarter, Tallaght

The South Dublin County Council lands north of Belgard Square North have since 2018, been subject of a masterplan study and a series of resulting projects. These projects include recent Part 8 approvals for affordable rental apartments, a new Urban Plaza and linear park and Tallaght Innovation Centre. Delivery of infrastructure to support these schemes include the new Cookstown- Belgard link road, which is nearing completion, and the Tallaght District Heating network.

In conjunction with these developments - a bespoke identity for this new urban district has been developed. The new quarter

will be IQ Tallaght or Innovation Quarter Tallaght, an address which will distinguish these new exciting developments. The strategic development of IQ Tallaght will provide key links from Cookstown to Tallaght Town Centre, as well as key links between the hospital and the Airton extension.

The proposed overall development has a budget of approximately €50million. Construction on the various projects are due to commence in Q3/Q4 2021.



Dublin's Outdoors

What do you know about the Old Schoolhouse and Church Terrace in Clondalkin? Download Clondalkin's heritage trail app today to find out more about the history surrounding you. You can find it on <https://www.dublinsoutdoors.ie/apps/> and its available for Android and iPhone from Google Play Store and Apple's App Store.

If you want to just stop and smell the flowers, spend quality time as a family, enjoy long walks or build up a sweat on the running track, the parks of South Dublin County will meet your needs. Visit <https://www.dublinsoutdoors.ie/visit/our-parks/> to find out more.

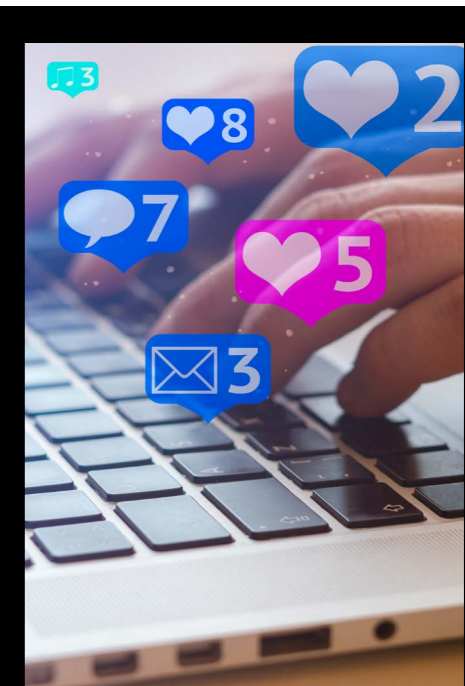
Saturday STEAM Club is just one of the library events taking place this month.

Library Events

South Dublin Libraries continue to offer a range of events online for all ages to assist our citizens to stay active during the current pandemic restrictions.

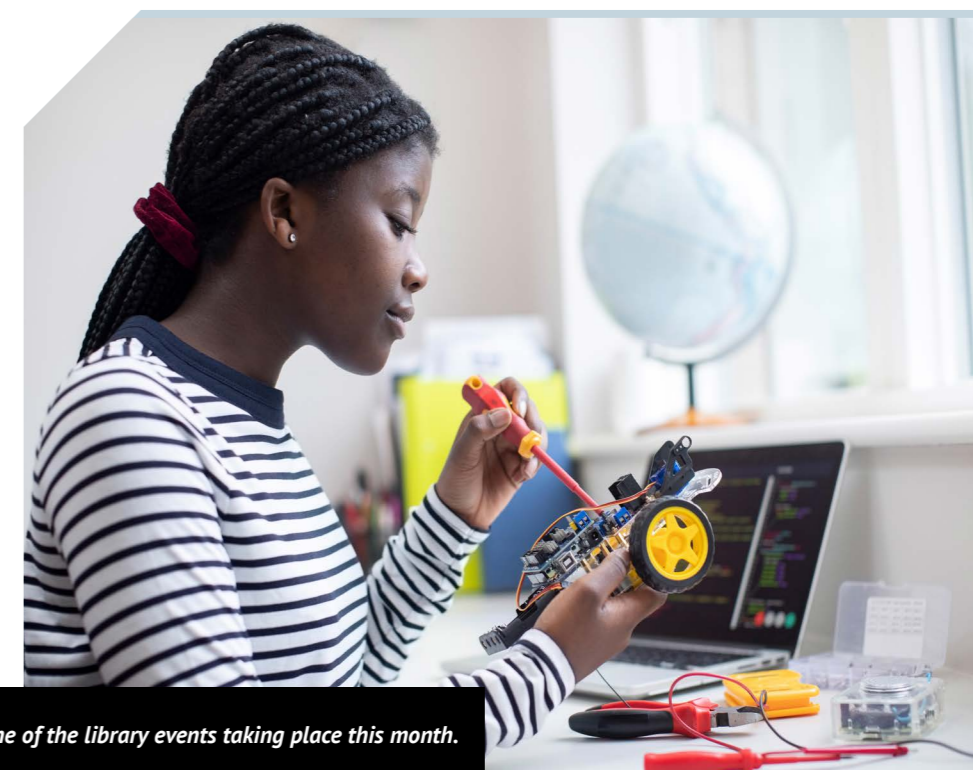
Among them, Cool Food School offers fun, interactive cooking classes, Saturday STEAM Club, Relax Kids encourages children to relax while developing their creativity and imagination, Brian Mahon of the Irish Times talks about his career and Midterm Lego Challenges posts new Lego challenge for your kids to try at home every day of midterm.

You can sign up for events by visiting www.sdcc.ie/en/events. and selecting which one you'd like to take part in. There are limited numbers for some events so sign up early to avoid disappointment.



Local Enterprise Workshops

The Local Enterprise Office South Dublin has lined up a range of workshops and trainings throughout February. Carried out online, the range of events include Twitter for Business, Email Marketing, Small Business Accounting, the Food Starter programme. Brexit and Customs and more. Book your place at <http://www.localenterprise.ie/SouthDublin>.



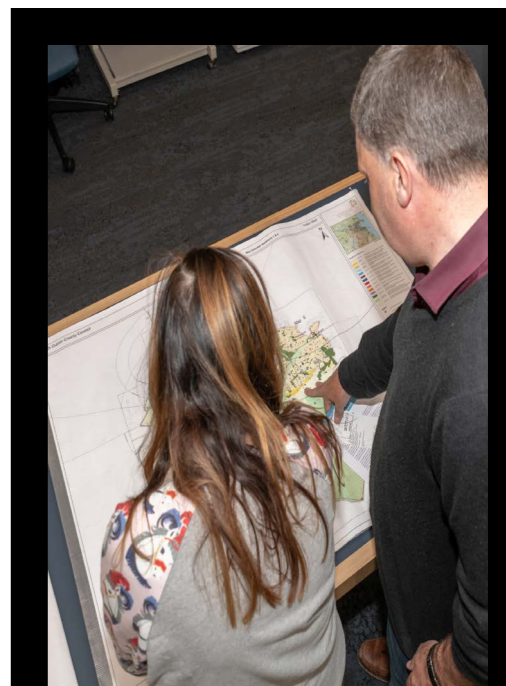
CORPORATE PERFORMANCE AND CHANGE MANAGEMENT



Seachtain na Gaeilge

Tá Comhairle Contae Átha Cliath Theas agus Seirbhísí Leabharlainne tar éis dul i gcomhpháirt le hÁras Chrónáin i gcomhair Seachtain na Gaeilge Átha Cliath Theas (SnaGÁCT) i mbliana. Táthar ag cur bailchríche leis an gclár SnaGÁCT faoi láthair, agus rithfidh sé idir 1 agus 17 Márta. I bhfianaise na paidéime COVID-19 reatha, is ar líne a bheidh an chuid is mó den chlár imeachtaí, ach déanfar ceiliúradh agus cur chun cinn iontu ar ár dteanga náisiúnta. Eiseofar tuilleadh sonraí faoin gclár gan mhoill.

South Dublin County Council and Library Services have partnered with Áras Chrónáin for this year's Seachtain na Gaeilge Átha Cliath Theas (SnaGÁCT). The SnaGÁCT programme is currently being finalised and will run from 1 to 17 March. Given the current COVID-19 pandemic, the programme of events will be held mostly online but will celebrate and promote our national language. More details on the programme will be released shortly.



Public Consultations

Despite in-person public consultation events being curtailed due to COVID-19, almost 2,500 people took part in a consultation with the Council in 2020. Those carried out included areas such as flood alleviation, traffic calming, Cycle South Dublin and the initial stages of the County Development Plan. Online consultations are being progressed in 2021 as part of the Council's enhanced digital services.

€300k Have Your Say

South Dublin County Council has given a commitment in the 2021 Annual Service Delivery Plan to holding the next edition of €300k Have Your Say this year. Last year's event was postponed due to the onset of the COVID-19 pandemic and was due to be held in Tallaght Central.

The Council are investigating ways to hold the event online and will be releasing more information on this later this year. The 2021 edition will see Tallaght Central get their chance to decide on exciting projects for their area.

€300K Have Your Say is a local democratic process, which facilitates citizens in a local community to directly decide how to spend

a portion of the public budget in their area. It gives people the direct power to determine how to spend up to €300,000 to improve their community by asking them to suggest projects and then vote on which ones they would like to see funded through a public ballot.

In 2017, South Dublin County Council became the first local authority in the state to adopt participatory budgeting through its pilot programme in the Lucan Electoral Area. This was followed up with the 2018 version in Clondalkin and in 2019 with Firhouse Bohernabreena, €300k Have Your Say was also shortlisted at the Europe wide 'Innovation in Politics' award ceremony in Vienna, Austria in 2018.



€300k Have Your Say

The Council's award winning participatory budgeting initiative returns in 2021.

Careers at the Council

The Council has in recent weeks advertised a number of jobs based throughout our departments, from engineers to a digital content officer, internal auditor, librarian and more. South Dublin County Council tries to attract and retain talented and motivated people, from diverse backgrounds and experiences, who will take pride in their work and make a positive difference to the lives of citizens in South Dublin County.

If you are interested in joining us, keep an eye on the Council's dedicated e-recruitment system at <https://sdccjobs.ie/>.

The Council has a dedicated e-recruitment system.

Join our team!

We're hiring.

ENVIRONMENT WATER AND CLIMATE CHANGE



Intergenerational Centre

The Council's capital budget has provided €1.29million for an Intergenerational Centre at Tymon Park.

The current concept plan develops an idea of a multi-use facility that is adaptable to a variety of purposes, such as age-friendly and community groups. There are several larger function rooms, a multi-functional community space, a coffee/tea shop with indoor and outdoor seating and an outdoor terrace sheltered by a canopy, which can provide space for outdoor cinema and other events.

The landscape plan for the proposed facility ensures the building is integrated into the parkland setting; the landscape plan realigns the vehicular route; upgrading the walking route into the park from Wellington Road and providing an enhanced pedestrian entrance to the park; putting the emphasis on pedestrian/wheelchair access.

The preliminary design for the project is currently being finalised and, once complete, it is intended to commence the Part 8 stage in 2021.

Climate Action Newsletter

A new Climate Change Newsletter was recently published to keep citizens and staff informed of the climate change-related work being out by South Dublin County Council.

Please email climatechange@sdbublincoco.ie to subscribe to the newsletter or visit www.sdcc.ie to see the current edition.

Council to spend €1 Million on improving our Public Realm and open spaces

The Council's programme of proposed improvement works for parks, the public realm and open spaces for 2021 is being presented for agreement to the February meeting of the County Council.

The proposed programme of works for 2021 consists of a total of 59 minor works schemes across the electoral areas amounting to a total proposed expenditure of €1.002m which has been provided for in the revenue budget. The list of proposed schemes has been compiled from improvement requests received from Councillors and members of the public, as well

as works that have been identified as necessary by staff.

The breakdown of schemes included this year is as follows – 23 are footpath construction or improvement schemes, nine are pollinator-friendly planting schemes, three public lighting schemes on open spaces, three fencing/railing schemes, two bridge improvements, two drainage improvement schemes on playing pitches, the construction of one dog run and extension of a second, and the remaining 17 schemes address a variety of issues including lake edge protection, installation of exercise equipment, installation of seating and other matters.

Work will commence on these schemes as soon as Covid restrictions allow.



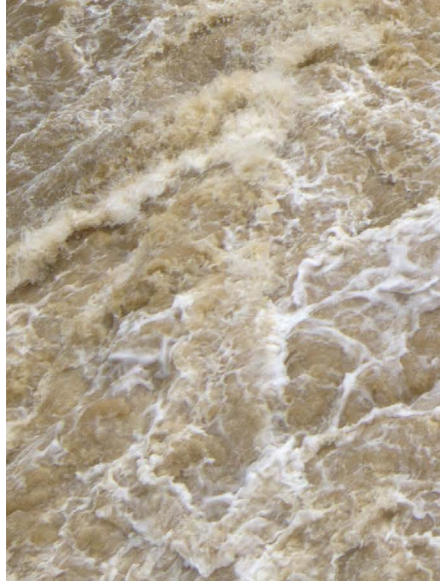
Climate Workshops

Climate change is real and the Council is committed to ensuring that our citizens and staff are well informed and educated on this crucial issue. In early 2020, we began the rollout of a series of easy-to-digest Climate Action Workshops. As well as explaining the science of climate change, the workshops also showed participants how they can deliver local climate actions.

A Climate Action Training Programme will also be delivered to all Council staff and elected members to increase understanding of climate change and what it means for Ireland.



WHITECHURCH FLOOD ALLEVIATION



Planning approval has been granted for the Whitechurch Stream Flood Alleviation Scheme.

South Dublin County Council are pleased to announce that planning approval has been granted under Section 177AE of the Planning and Development Act 2000 for the Whitechurch Stream Flood Alleviation Scheme (FAS).

When completed, the Whitechurch FAS, with an estimated value of €2m, will not only provide fluvial flooding protection for up to 50 local residen-

tial and business properties in a one in one hundred year flood event, but will enhance the riverside experience for pedestrians and create a high quality, safe and functional environment.

The project will see South Dublin County Council, in partnership with the Office of Public Works (OPW), carry out an important new project to manage flooding from the Whitechurch

Why Whitechurch?

The Whitechurch Stream in Rathfarnham was identified under the Dodder Catchment Flood Risk Assessment and Management project as being liable to flooding during a one in one-hundred year flood event. This is mainly due to low banks, overtopping of existing defences or insufficient flood-plain capacity. In addition, there is insufficient capacity at a number of bridges and culverts and this causes water to back-up and producing increased water levels upstream.

The most recent flooding took place in 2011 and previously in 2007.

Flood alleviation measures were assessed as part of a larger project to manage flooding from the River Dodder under the OPW's national Catchment Flood Risk Assessment and Management (CFRAM) project.

Forming part of the five main tributaries of the River Dodder, the 7.7km Whitechurch Stream rises between Tibbradden and Kilmashogue Mountains. It flows northerly through Marley Park and St. Enda's Park, onto Willbrook, where it meets the Owendoher River. Flowing through parkland and urban areas, the Whitechurch Stream includes a large number of bridges, culverts and weirs.

Full details of the An Bord Pleanála decision and the Inspectors Report can be found on An Bord Pleanála's

website. As project timelines are developed, further notifications will be provided and information will be made available on www.whitechurch-fas.ie.



Whitechurch Flood Alleviation Scheme

LUCAN VILLAGE ENHANCEMENTS



In January 2021, South Dublin County Council appointed DHB Architects to design public realm enhancements in Lucan Village.

Lucan, as a gateway to the Liffey Valley, has been designated as a 'destination town' by Fáilte Ireland under its destination development programme.

South Dublin County Council has also allocated funding of €2,000,000 for public realm improvements to the riverside and village green areas. Separately the council is advancing plans for the development of a green-

way linking the two canals via Lucan village which will further enhance its destination status. The target areas include the Village Green, the Weir-view promenade and the entrance to Lucan Demesne.

The overall objective in keeping with the County Tourism Strategy is the promotion of Lucan as a tourism destination of note within the Dublin region. Concurrent with these

Destination Towns

Fáilte Ireland's Destination Towns scheme is funded under the Government's Project Ireland 2040 strategy with the aim of driving sustainable growth in the Irish tourism sector and higher revenue and job creation around Ireland.

The Fáilte Ireland scheme is part of the National Tourism Development Authority's work to drive a better regional spread of overseas and domestic visitors and spend.

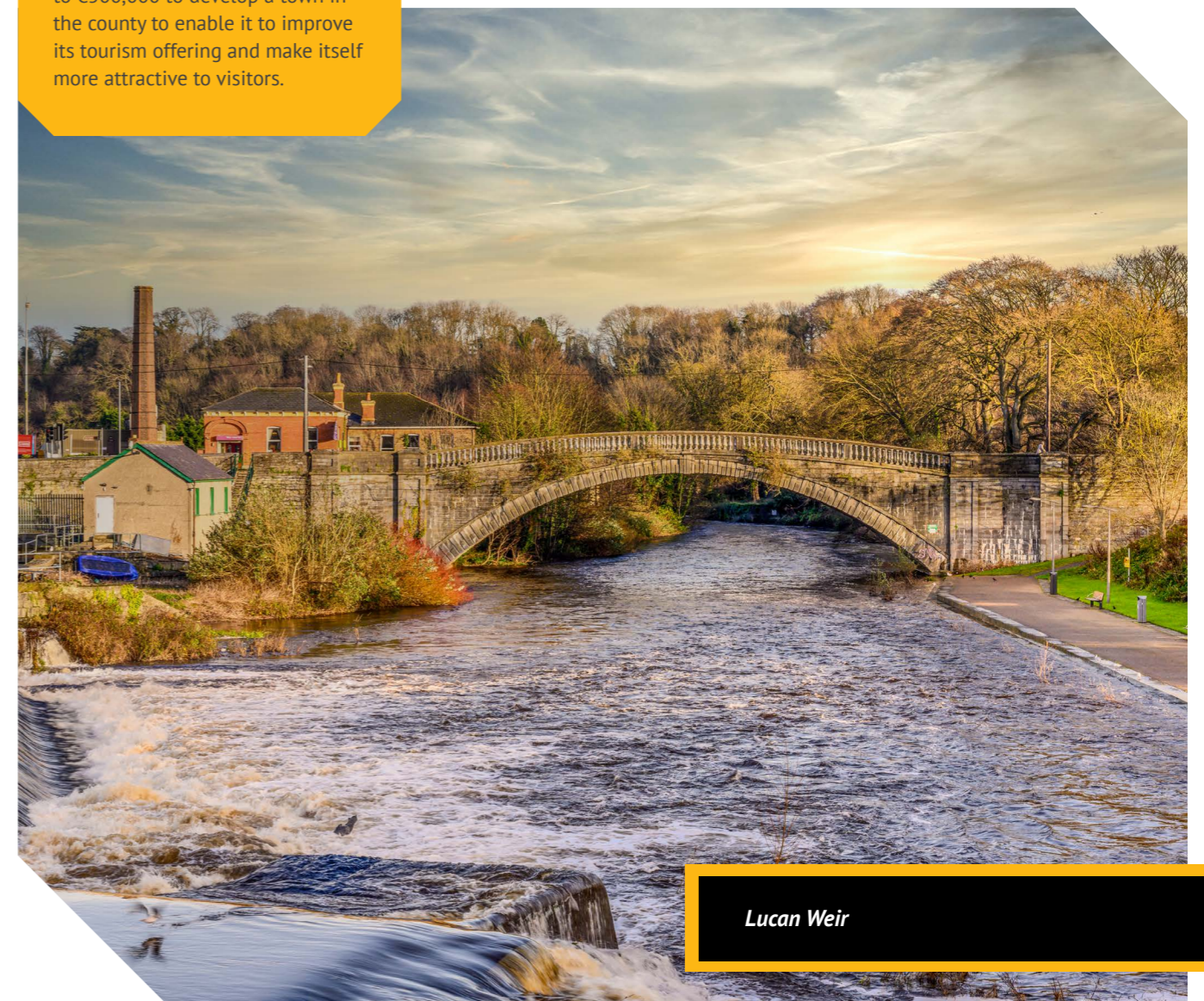
Through the scheme, every Local Authority in the country had the opportunity to bid for funding of up to €500,000 to develop a town in the county to enable it to improve its tourism offering and make itself more attractive to visitors.

planned enhancements consultants will be appointed to advise on additional interventions on the future marketing and branding of the area. Initial designs will be completed by June 2021.

DHB Architects is a Waterford based RIAI registered practice with a wide range of work to its credit including public realm projects. Recent successes include the Irish Construction Industry best project award in 2018 for the regeneration of the Apple Market area in Waterford City.

DHB Architects has accredited Grade 1 Conservation expertise and this has been put to good use through a series of best practice examples on important protected structures and urban regeneration projects. Its directors

have extensive experience in practice, teaching and research in Ireland, France and Finland and the practice's work benefits from this international background.



Lucan Weir

COUNTY DEVELOPMENT PLAN 2022 - 2028



South Dublin County Council held online meetings in January and early February on the pre-draft stage of the new County Development Plan 2022 - 2028.

The online meetings were open to the public and considered the 'big picture' strategic direction to be taken in the preparation of the draft South Dublin Development Plan.

The South Dublin County Development Plan 2022-2028 will set out the land use framework to guide future development with a focus on the places we live, the places we work,

and how we interact and move between these places while protecting our environment.

The County Development Plan will set out the strategy to co-ordinate and prioritise areas of population growth as South Dublin County moves towards an additional 80,000 people and 32,000 new homes by 2040 in line with national targets.

Broader Context

The plan sits within a hierarchy of plans and is required to have a Core Strategy which will show that the objectives in the plan are consistent with the objectives set out in National and Regional Strategies.

The National hierarchy of spatial plans consists of the National Planning Framework (NPF) underpinned by the investment priorities set out in the National Development Plan (NDP) The Regional Spatial and Economic Strategy (RSES) then sets out the regional framework for the implementation and delivery of the NPF. The RSES includes a Metropolitan Area Strategic Plan (MASP) which encompasses the entire County of South Dublin.

The County of South Dublin needs a future vision and plan for its growing communities, places, housing, jobs, sustainable transport and the delivery of services.

By planning for great places in which to live through high quality, well designed and well-planned neighbourhoods, we will enhance the quality of life for existing and future populations. The development of such areas will require improved public transport, high quality public realm and green spaces, more housing, jobs, community and educational facilities alongside an unprecedented level of essential infrastructure delivery over the next 20 years.

The new plan will follow from previous six-year County Development

Plans which have set the foundations for existing development and development currently under construction within the County.

The Draft County Development Plan 2022 - 2028 is due to be considered by elected members in April. You can find out more about the plan at <https://www.sdcc.ie/en/devplan2022>.



County Development Plan 2022-2028



Under each of those headings, details are provided on the objectives and supporting strategies for that area as well as the specific capital works projects planned and the accompanying performance indicators.

The 2021 Annual Service Delivery Plan will be delivered as the country still deals with the ongoing COVID-19 pandemic but that has not tempered the Council's ambitions for the year. Among the initiatives listed in this year's plan, you'll find the upgrade and construction of the fourth stand at Tallaght Stadium, the Dublin Mountains flagship tourism project, Cycle South Dublin programme, multiple housing projects and climate actions and the delivery of a Digital Services Strategy to enhance how we serve you and everyone who interacts with the Council.

Among the targets we have set for ourselves for the year ahead are an increase of €1.1m in planned housing maintenance expenditure, targeting 96% of the County's population to be on the electoral register, planting 2,500 trees, upgrading 1,500 public lights to LED, 1,400 m2 of new and upgraded cycle paths and providing €300,000 in business supports.

Once the 2021 Annual Service Delivery Plan is adopted by elected members, it will be posted to the Council's website and social media channels to download and we will include an article on the plan in this summer's Citizen's Newsletter.

The 2021 Annual Service Delivery Plan (ASDP) is delivered to elected members at the February's Council meeting.

The purpose of the Annual Service Delivery Plan is to identify the key services that South Dublin County Council intends to deliver to the public during 2021. Each year, after the Council adopts the budget, the Council then adopts a Service Delivery Plan with specific targets based on the objectives in the five-year corporate plan.

This Service Delivery Plan details our commitments and plans for the year ahead and a graphic summary of the detailed plan is delivered to every household, business and school in the County.

At the end of each year, we produce a report setting out the Corporate Plan achievements for the past year and measure progress. You can

see an update on this report in last month's Chief Executive's Report on www.sdcc.ie. The elected members review this progress before the Annual Report for that year is published. We publish our Annual Report on our website and copies are also available on request from your local library.

The Service Delivery Plan is structured per the Corporate Plan under the following strategic priorities:

- Economic, Enterprise and Tourism Development
- Land Use, Planning and Transportation
- Environment, Water and Climate Change
- Housing, Social and Community Development
- Organisational Capacity and Accountability

A FOCUS ON THE ANNUAL SERVICE DELIVERY PLAN



FEBRUARY STATISTICS REPORT HIGHLIGHTS



Corporate Performance and Change Management

Number of Customer Care queries received	4,984
Number of Customer Care queries closed within deadline	4,407
Web pages opened on Council websites	151,485
Social media reach	2,098,172
Social media engagement	46,077



Economic, Enterprise and Tourism Development

LEO - Number of mentoring sessions	34
Grange Castle jobs sustained	5,328
Library items borrowed	55,869
Library visitors	15,633



Environment, Water and Climate Change

Trees planted	310
Kilometers of road swept monthly	880
Derelict site/dangerous buildings inspections	14
Litter - Fines Issued	92
Tonnes of waste collected - litter and illegal dumping	340
Tonnes of waste collected from street bins	27



Housing, Social and Community Development

Total Housing Stock	9,747
Total housing needs assessed	6,740
Housing maintenance requests received	1,190
Allocations - New Tenancies	34
Number of PRTB inspections	269
Number of actions taken in response to anti-social reports	510
Electrical inspections completed	122

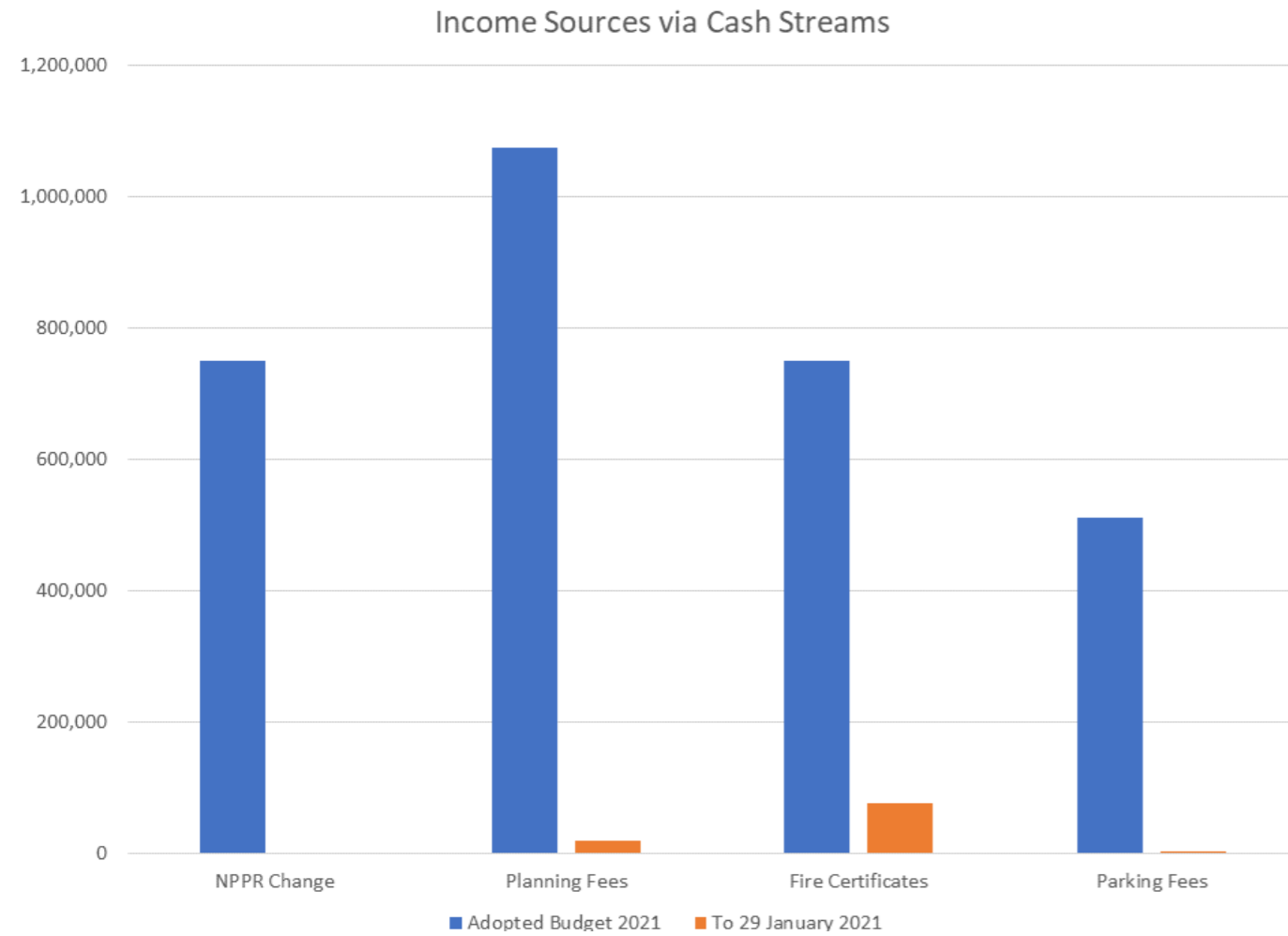


Land Use, Planning and Transportation

Planning applications received - new housing units	131
Area of road repaired in m2	22,631
Planning enforcements initiated	18
Number of public lights in charge	30,264
Number of traffic lights repaired within 24 hours	70

You can view all statistics under the Statistics Report in the Manager's Report headed item of the monthly Council meeting.

FINANCE REPORT

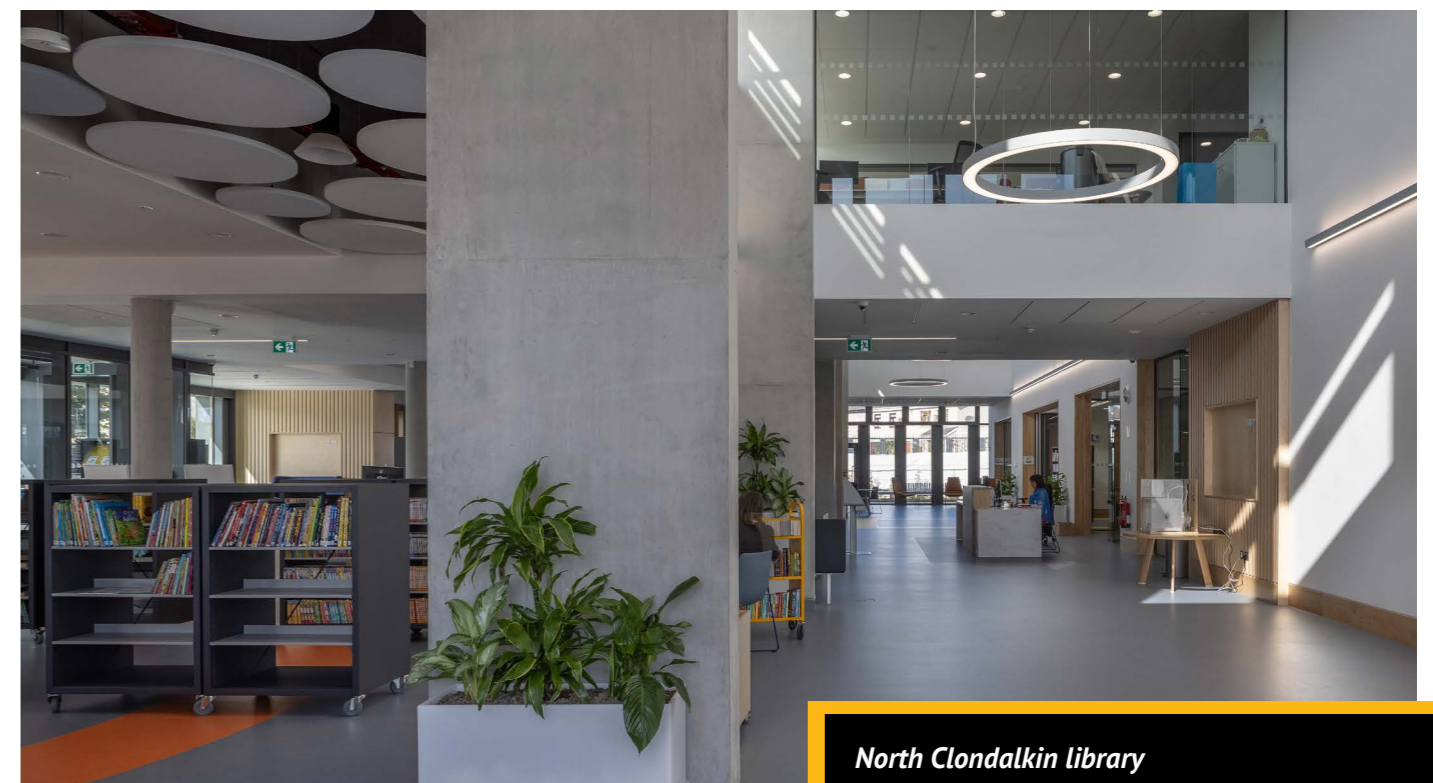


You can view the full Finance Report under the Manager's Report headed item of the monthly Council meeting agenda.

IMAGES OF THE MONTH



Recipients of the Shop Front Grant Scheme



FOLLOW US ON

SOCIAL MEDIA

South Dublin County Council



@sdublincoco



Southdublincoco



South Dublin County Council



@sdublincoco



Website www.sdcc.ie