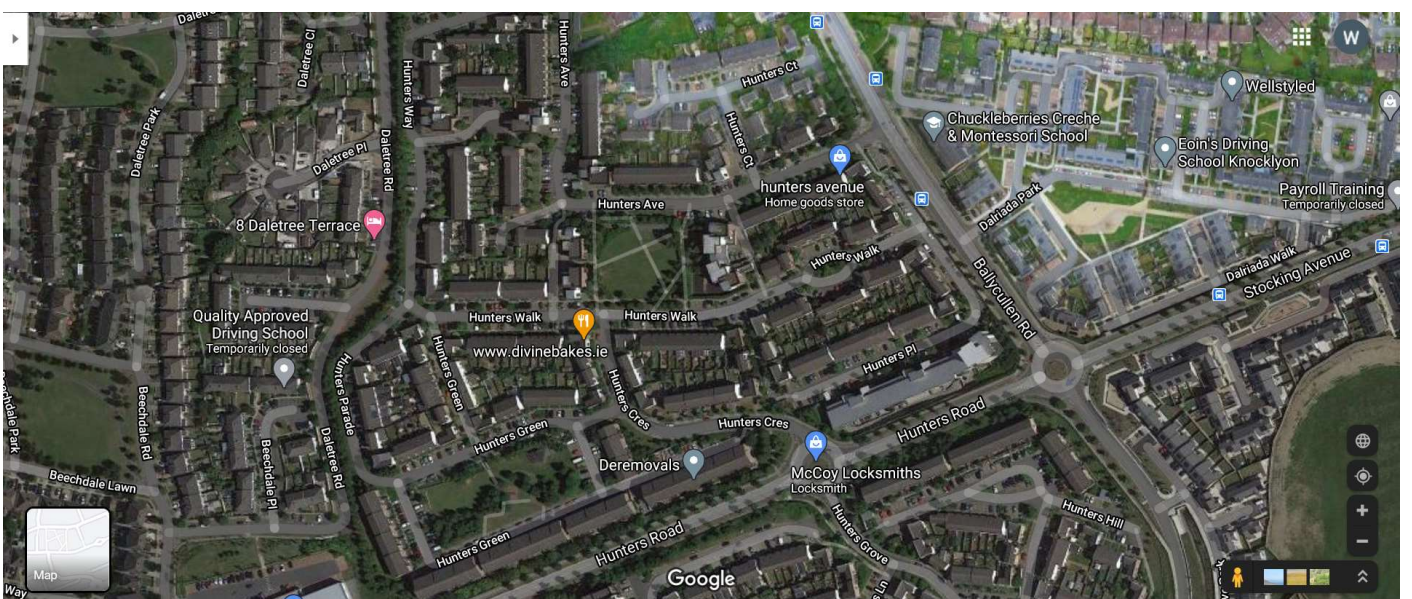




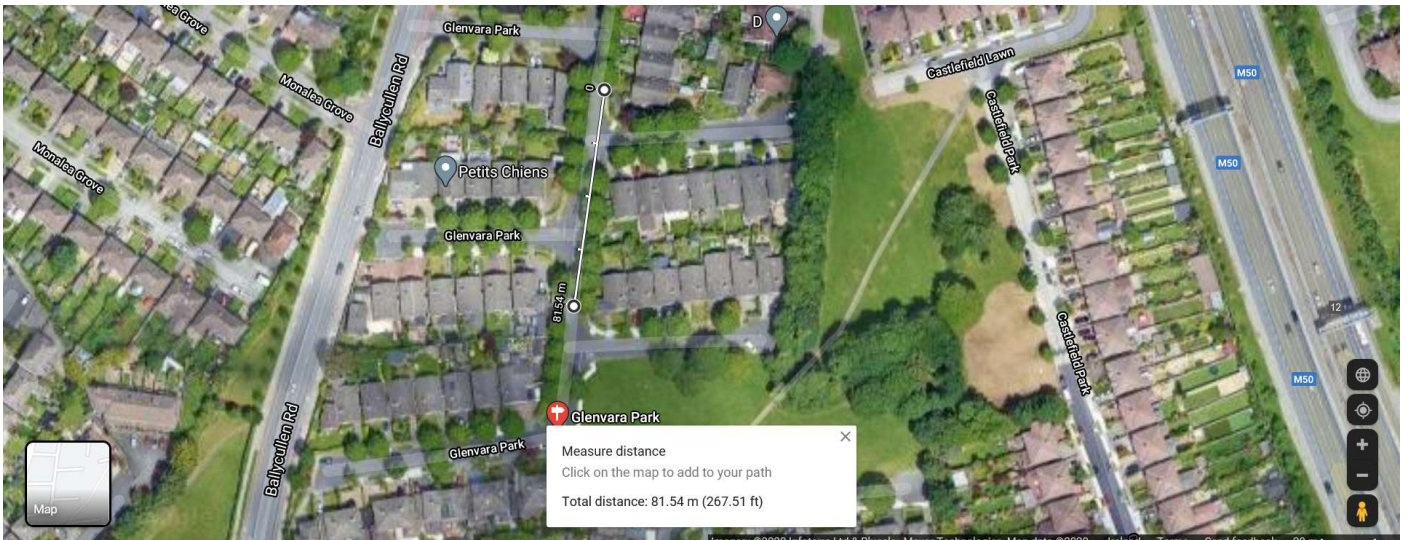
**Coolamber Park. 8 No. Standard 2.5m Ramps**



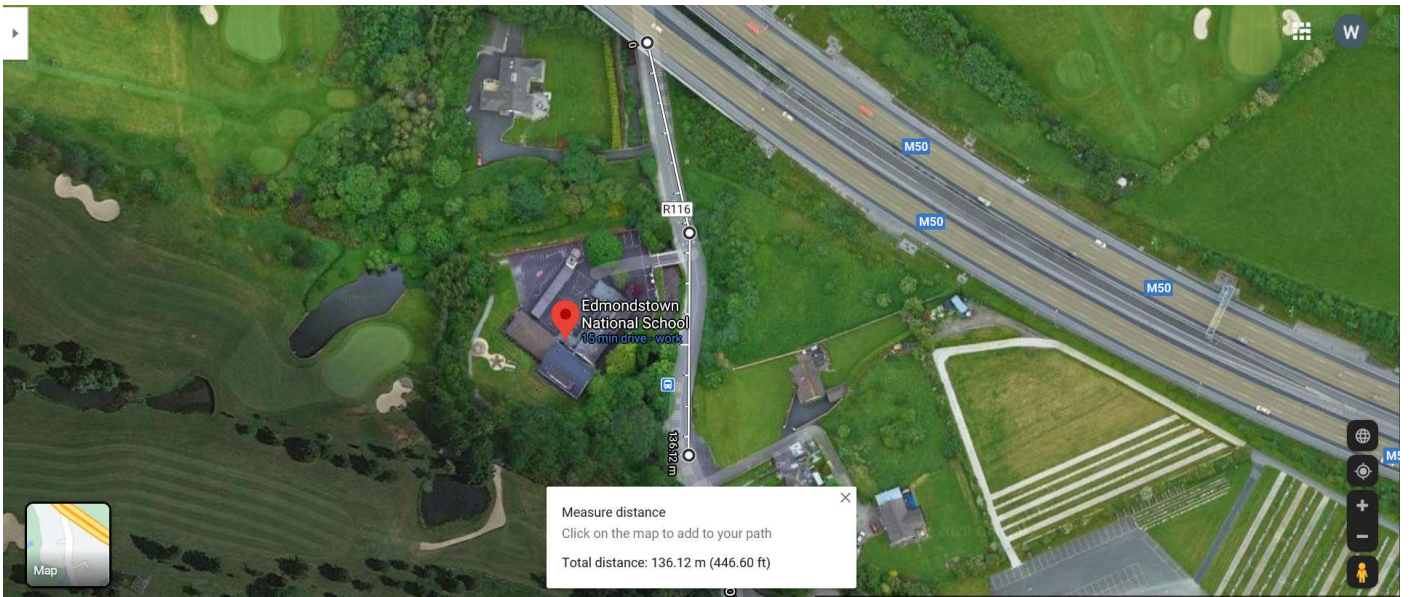
**Beechdale Road/Lawns. 4 No. Standard 2.5m Ramps**



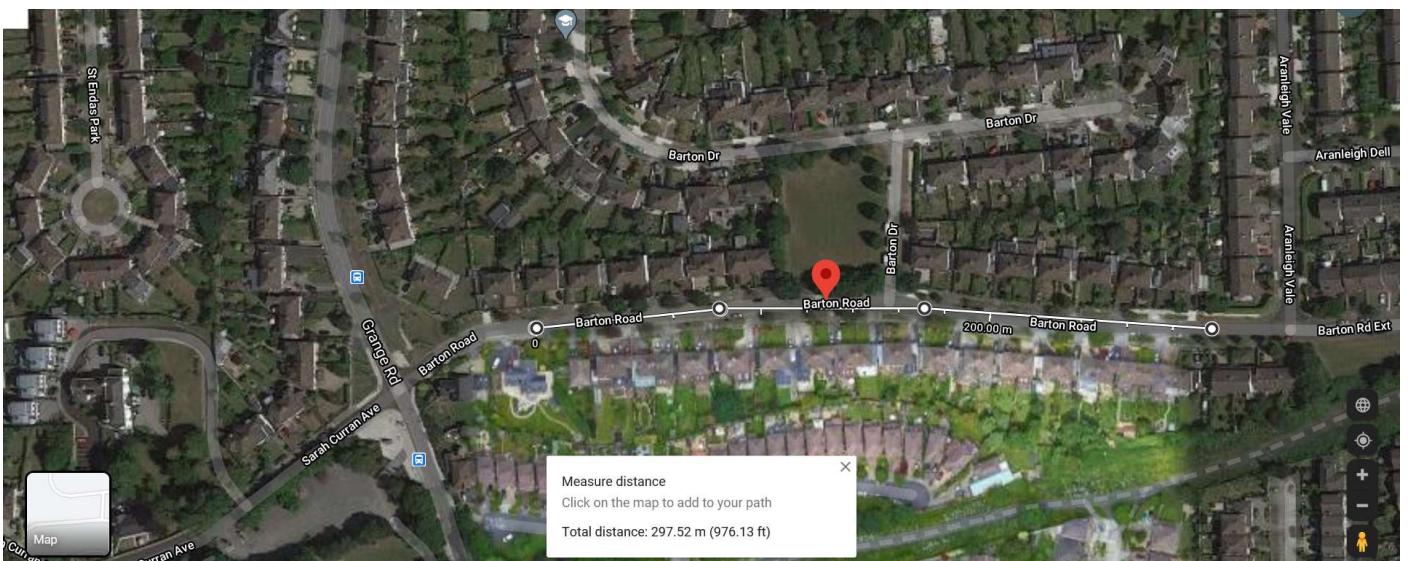
**Hunterswood. 7 No. Standard 2.5m Ramps**



**Glenvara Park. 2 No. Standard 2.5m Ramps**



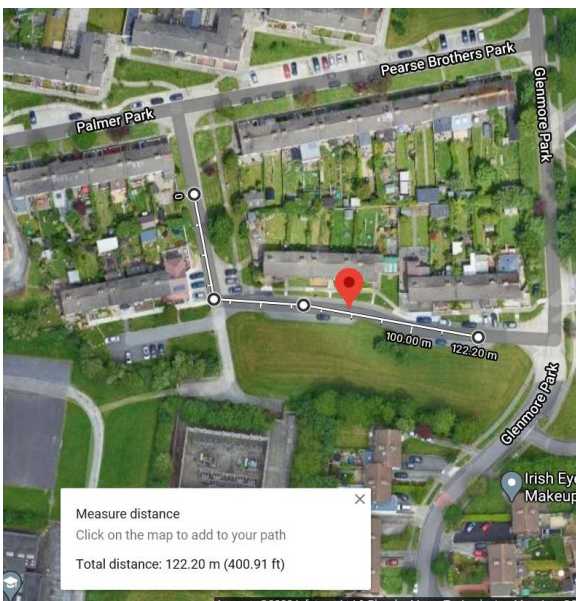
**Edmondstown National School. Bus Cushions at 2 No. locations as shown.**



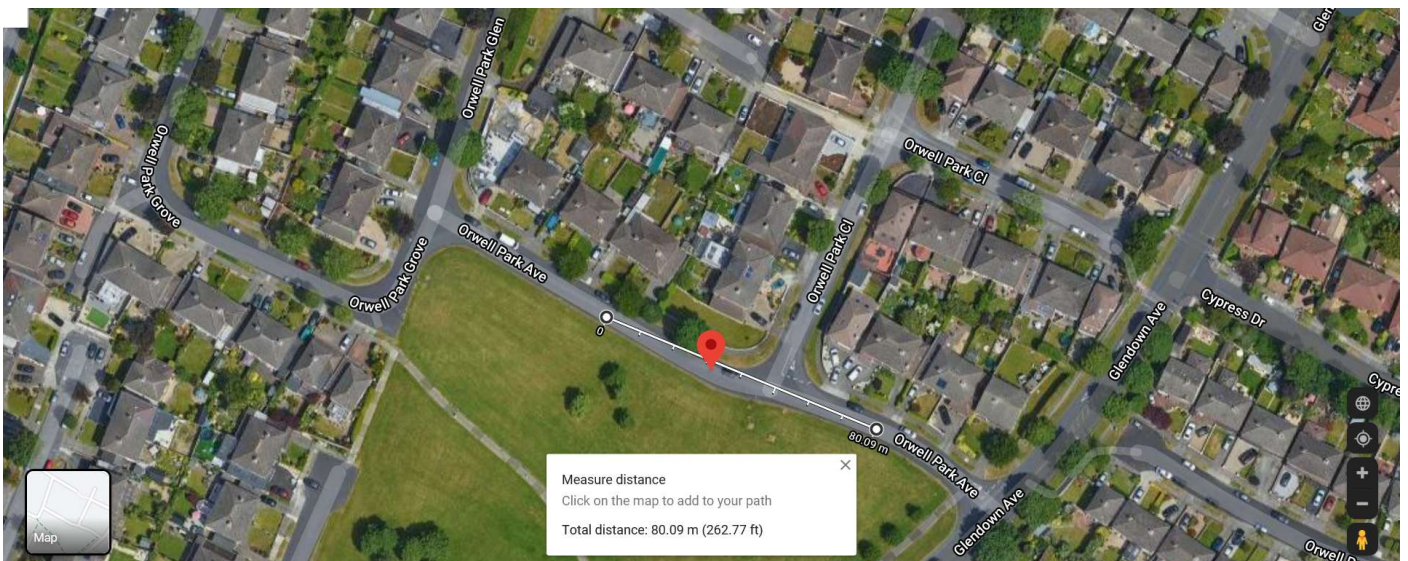
**Barton Road. 4 No. Standard 2.5m Ramps**



**Sarah Curran Avenue. 3 No. Standard 2.5m Ramps**



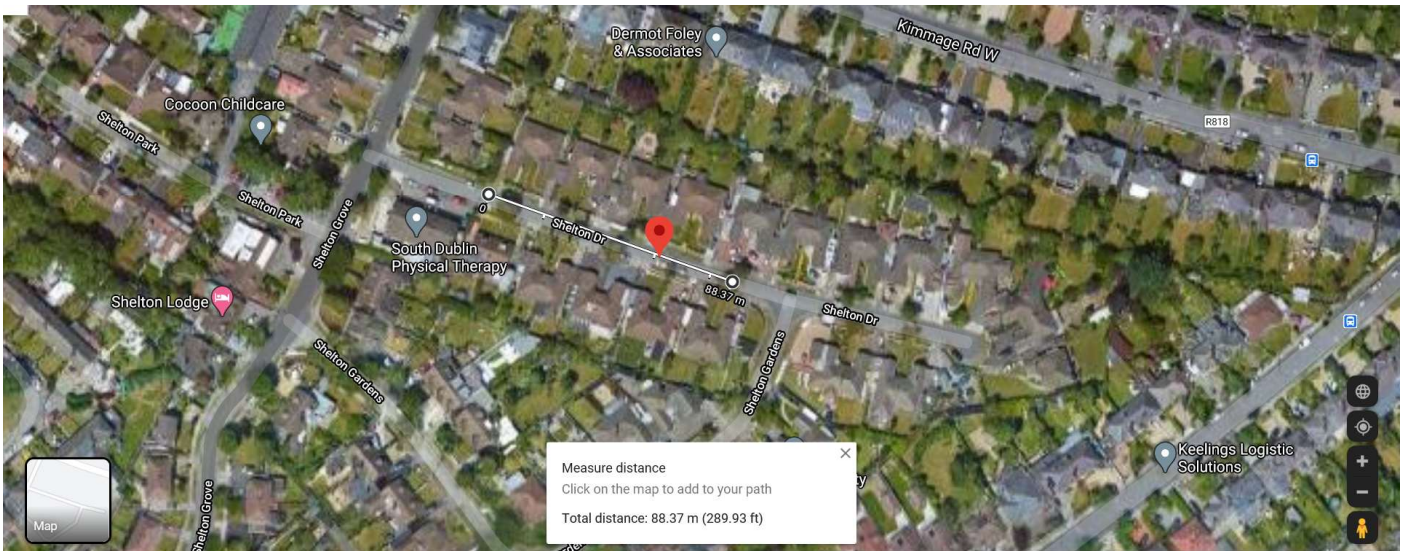
**Palmer/Pearse Brother Park. 3 + 2 No. Standard 2.5m Ramps**



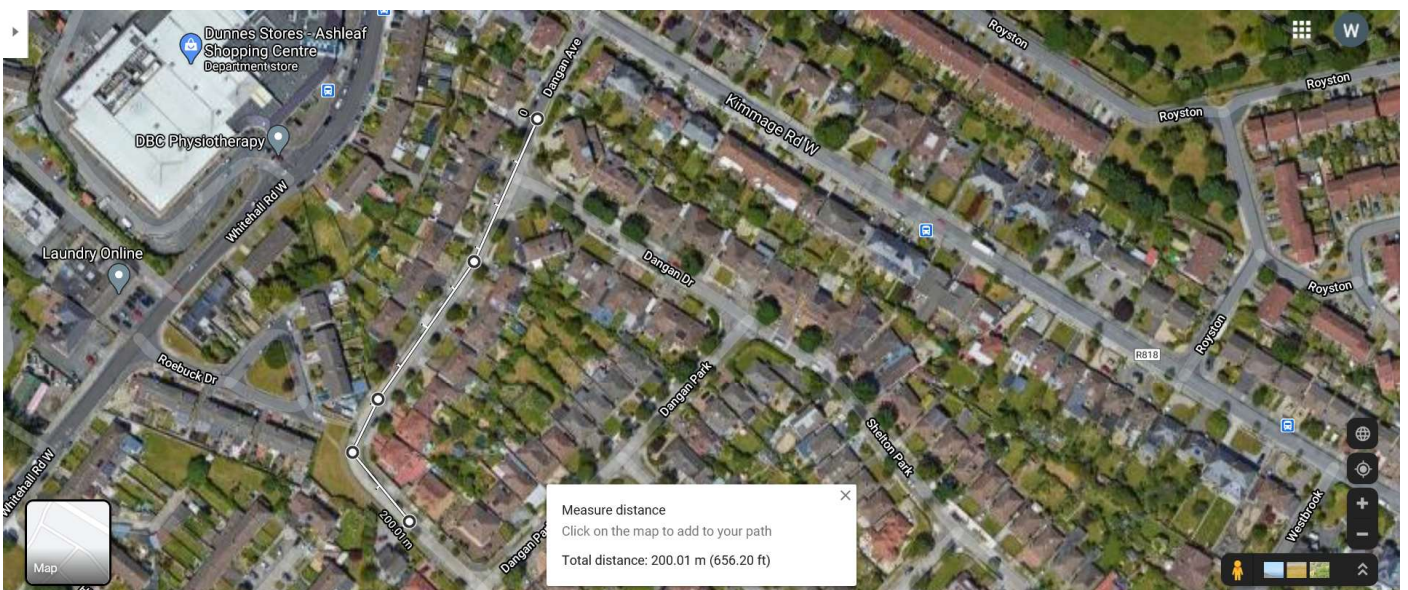
**Orwell Park Avenue. 2 No. Standard 2.5m Ramps**



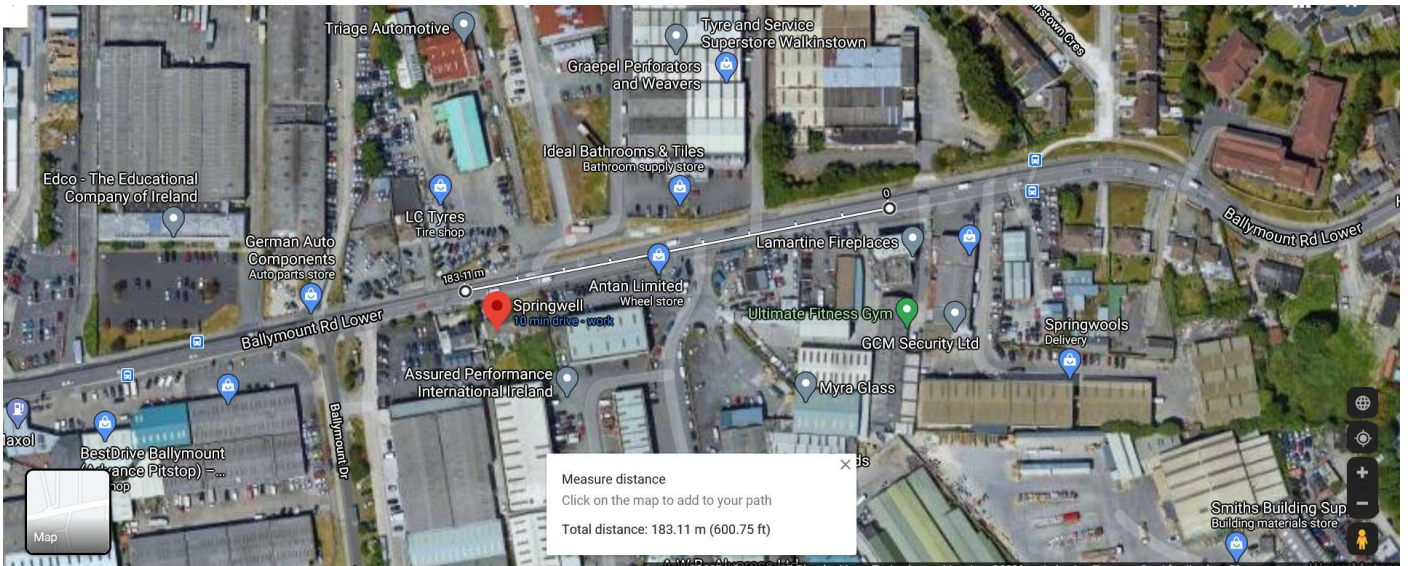
**Woodfield/Scholarstown Rd Junction. 2 sets of Bus Pillows**



**Shelton Drive. 2 No. Standard Ramps.**



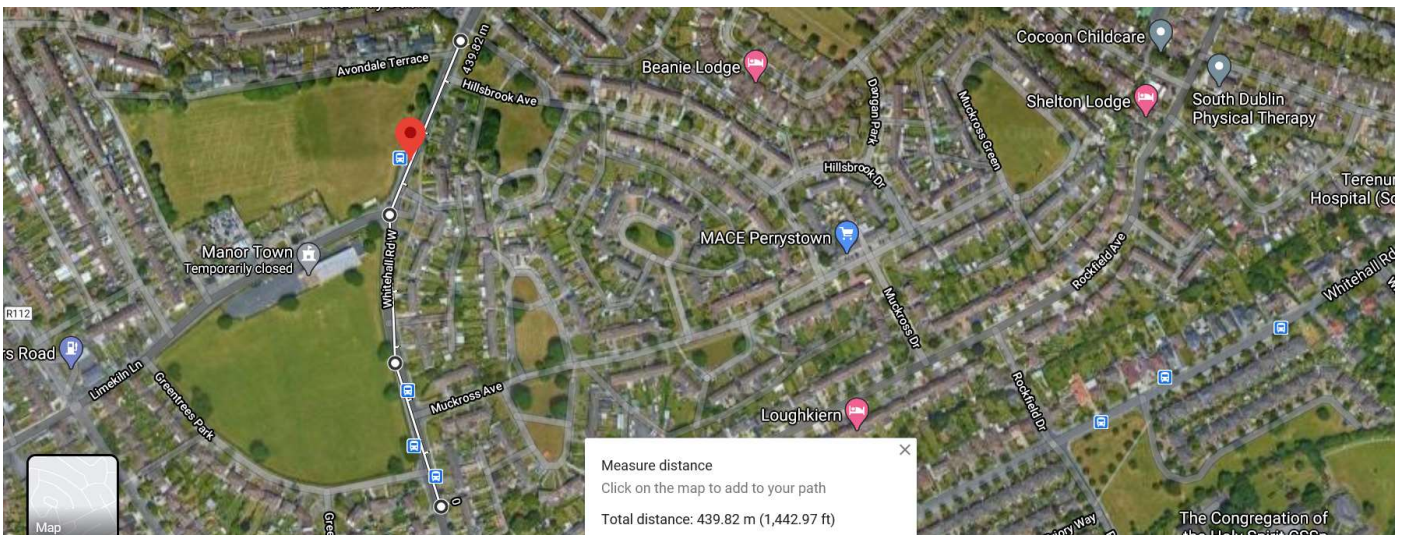
**Dangan Avenue. 3 No Standard 2.5m Ramps**



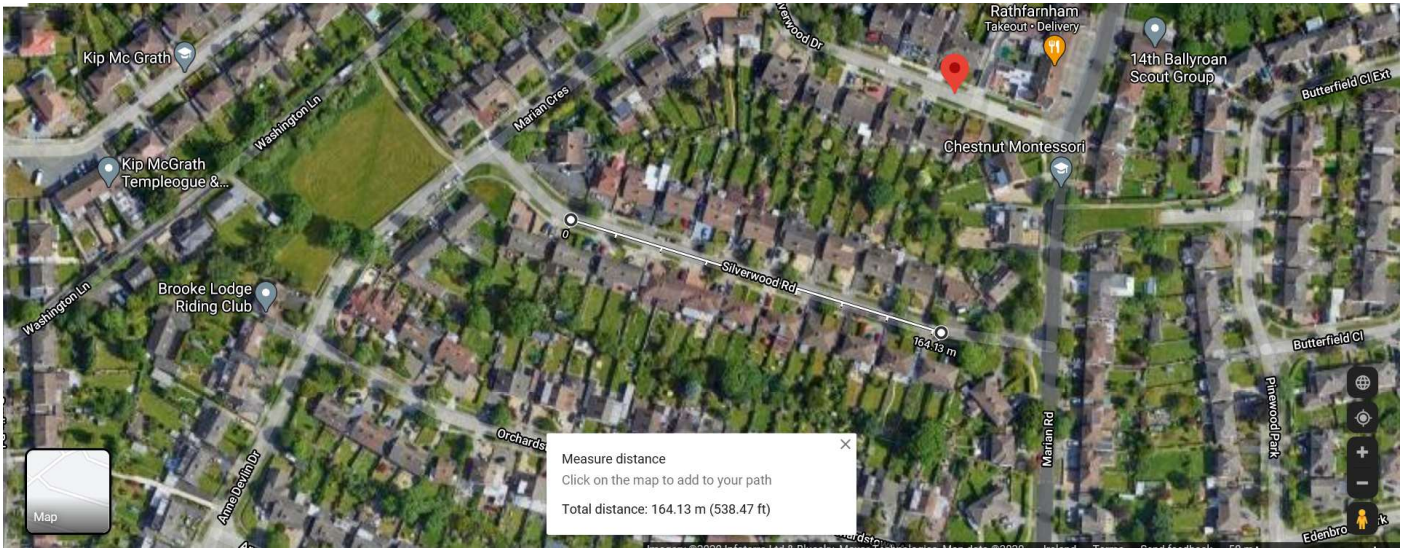
**Ballymount Road Lower. 3 sets of Bus Cushions.**



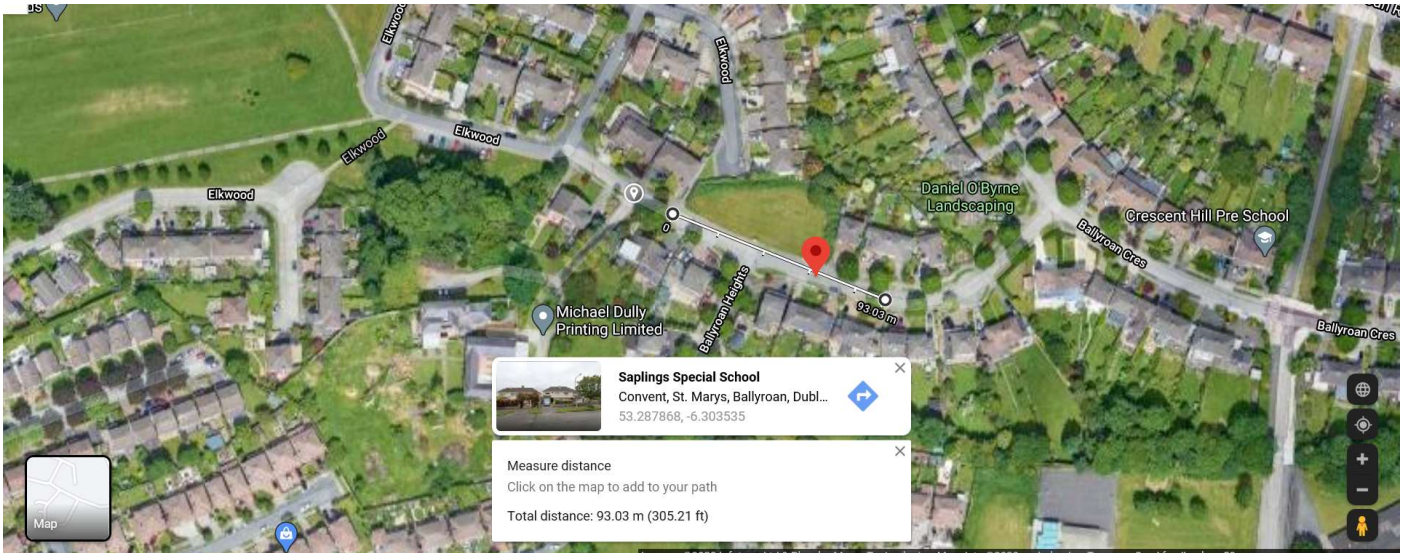
**Wainsfort Manor Drive. 5 No Standard 2.5m Ramps**



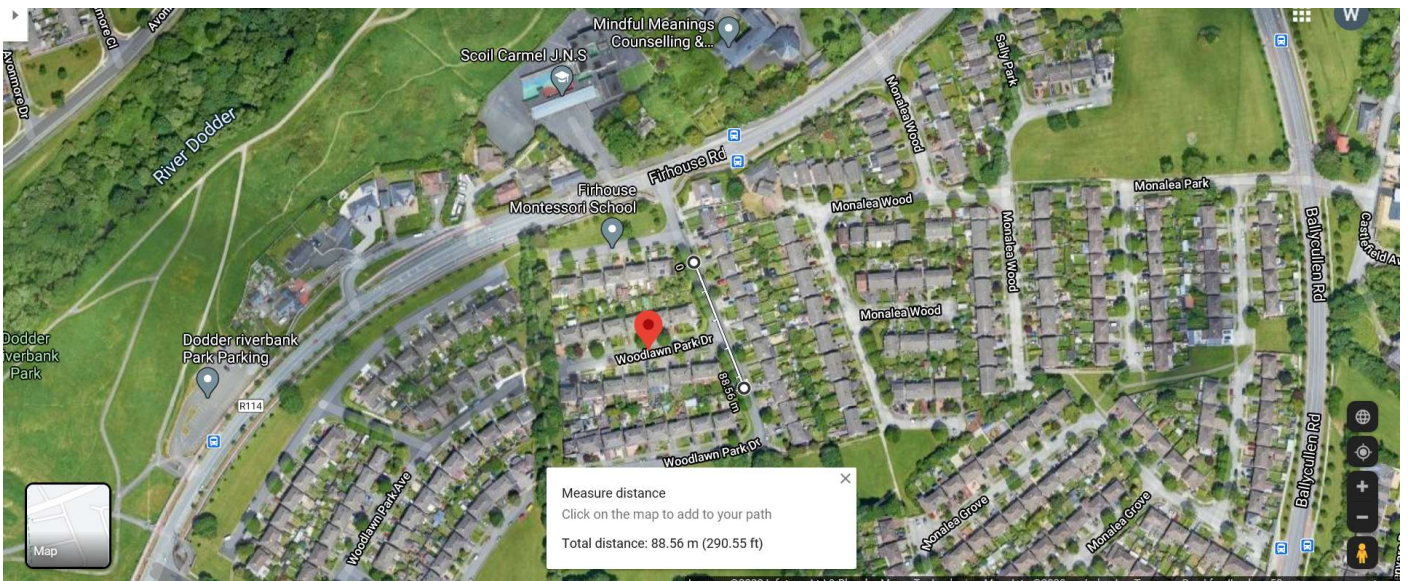
**Whitehall Road West (Muckcross to Hillsbrook Ave). 5 No sets of Bus Cushion  
+ 2 Standard 2.5m Ramps**



**Silverwood Drive. 3 No. Standard 2.5m Ramps.**

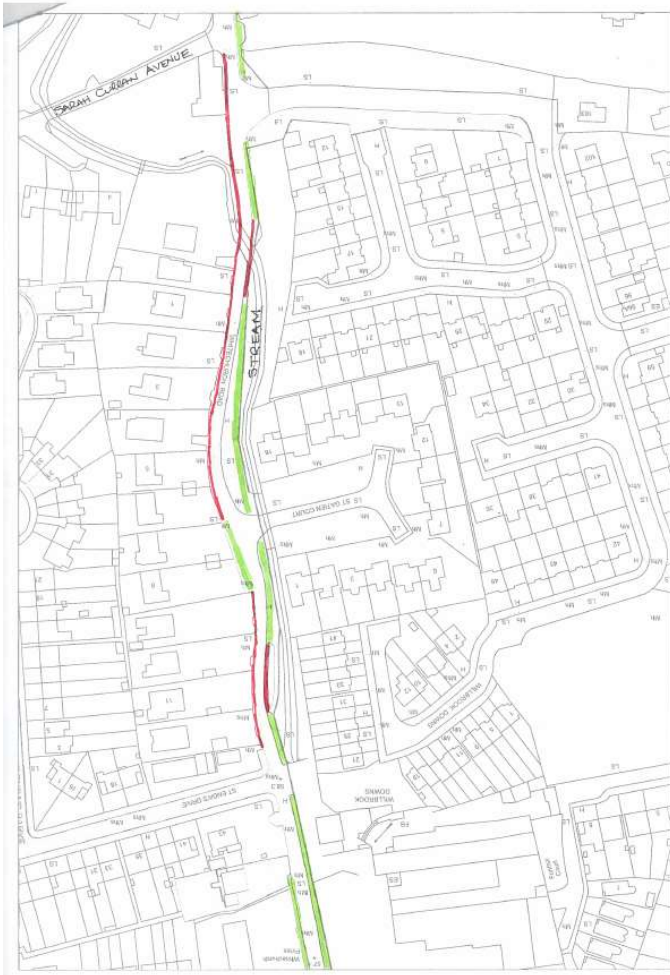


**Ballyroan Heights. 2 No Standard 2.5m Ramps**



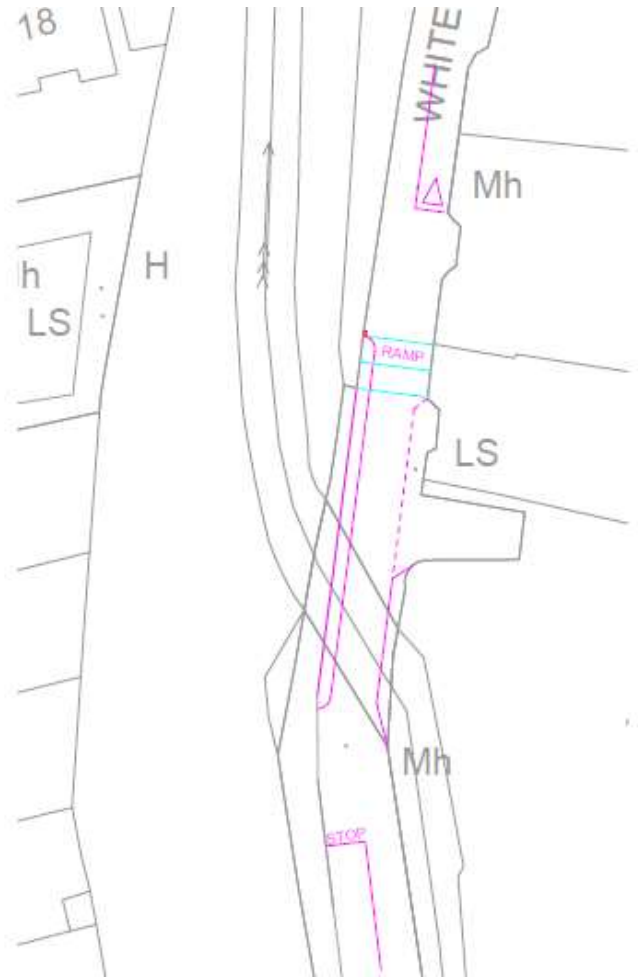
**Woodlawn Park Drive. 2 No Standard 2.5m Ramps**





**Location Map**

**Red indicates pedestrian /motorist conflict.**



**Details (works description)**

**New footpath and Give Way 4m wide roadway**

**Whitechurch Road Pedestrian improvement measures**