

Mixed Tenure Developments

PRESENTATION TO COUNCIL

JULY 2019

Killinarden (approx. 500 homes): Affordable (300), Social (100) & Private (100)



	MASTERPLAN BOUNDARY		EXISTING GREEN AREA		EXISTING/IMPROVED LANDSCAPE		PRIMARY/AVENUE FRONTAGE
	EXISTING URBAN BLOCK		ACTIVE OPEN SPACE		TREE LINE		PARK FRONTAGE
	NEW URBAN BLOCK		LOCAL PARK		WALKWAY/CYCLE ROUTE		SECONDARY FRONTAGE
	EXISTING BUILDING		URBAN SPACE		SUDS FEATURE		

Killinarden: Parkland Development



Belgard North (approx. 140 homes): Affordable Rental / Cost Rental

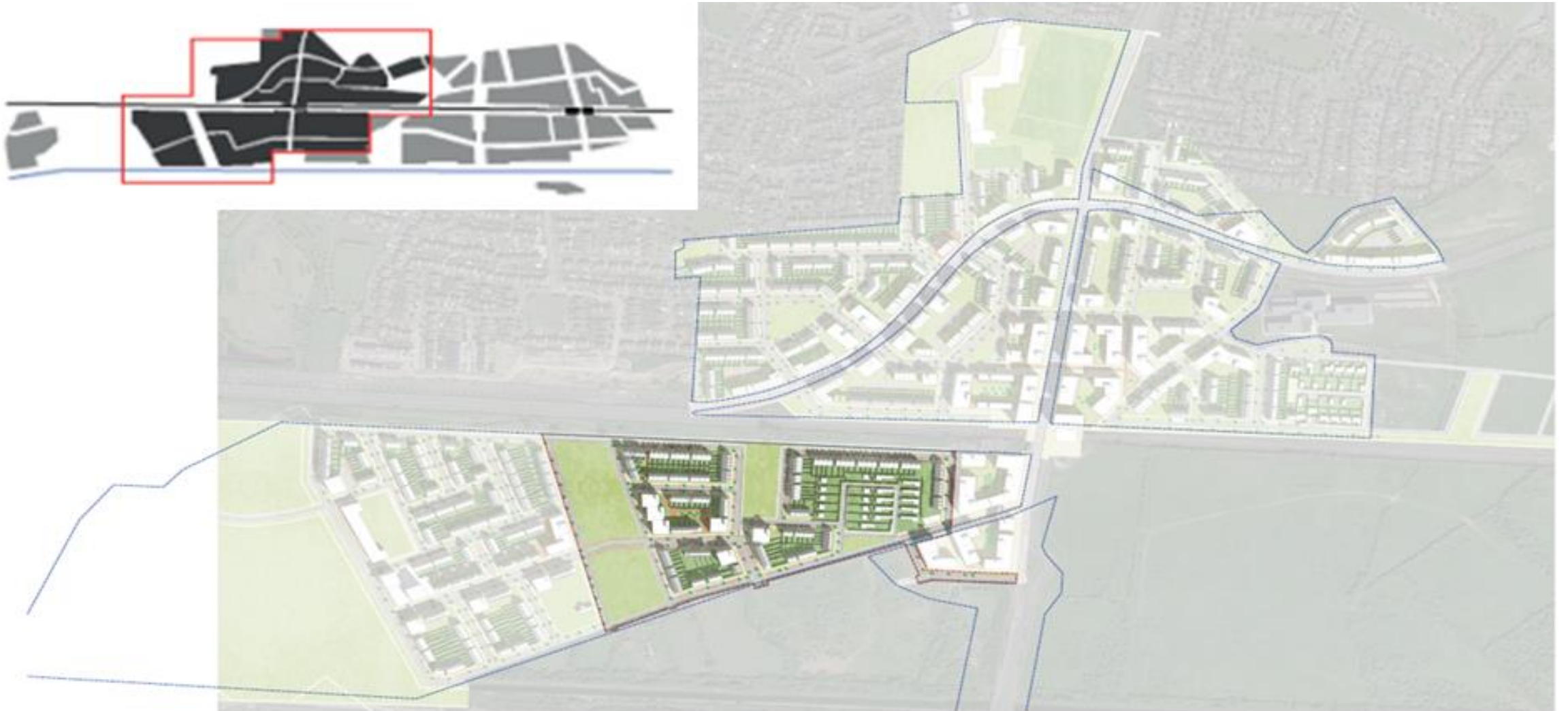


Rathcoole (approx. 250 homes):

Affordable (100 homes), Social (100), Private (50)



Clonburris (2,000+ Homes):



Clonburris (Phase 1—approx. 270 homes): Affordable (135) & Social (135)

Phase 1 Site Masterplan



Proposed Tenure Mixes

Site	Social	Affordable Purchase	Affordable Rental	Private	Total
Killinarden	100	300	-	100	500
Rathcoole	100	100	-	50	250
Clonburriss	135	135	-	-	270
Belgard Nth	-	-	140	-	140
Total No. Homes	335	535	140	150	1,160
%	29%	46%	12%	13%	

Next Steps

- Commission detailed design of Belgard Sq North apartments
- Move Clonburriss to Part 8
- Advance design & costing for Killinarden & Rathcoole to enable affordability decision and proceed to JV stage
- Establish market interest in line with Affordable Scheme of Priorities
- Agree level of financial support from DHPLG
- Further update at October Council meeting