

# HOUSING SUPPLY & SITES UNDER CONSIDERATION

---

**SPECIAL COUNTY COUNCIL MEETING  
16<sup>TH</sup> OCTOBER, 2018**

# PART 8s APPROVED



**Homeville - 16 Units**

**Approved at September Council Meeting**



**St. Catherines, Knockmore – 13 Units**

**Approved at September Council Meeting**



**Templeogue – 11 Units**

**Approved at October Council Meeting**



**Riversdale - 44 Units**

**Approved at October Council Meeting**



**Maplewood - 17 Units**

**Approved at October Council Meeting**



**Fernwood – 23 Units**

**Approved at October Council Meeting**

# PART 8 PENDING APPROVAL



- **Whitestown Way - 81 units**
- **Published 13<sup>th</sup> September**

# SITES CURRENTLY BEING PROGRESSED FOR PART 8



**Balgaddy – Proposed**

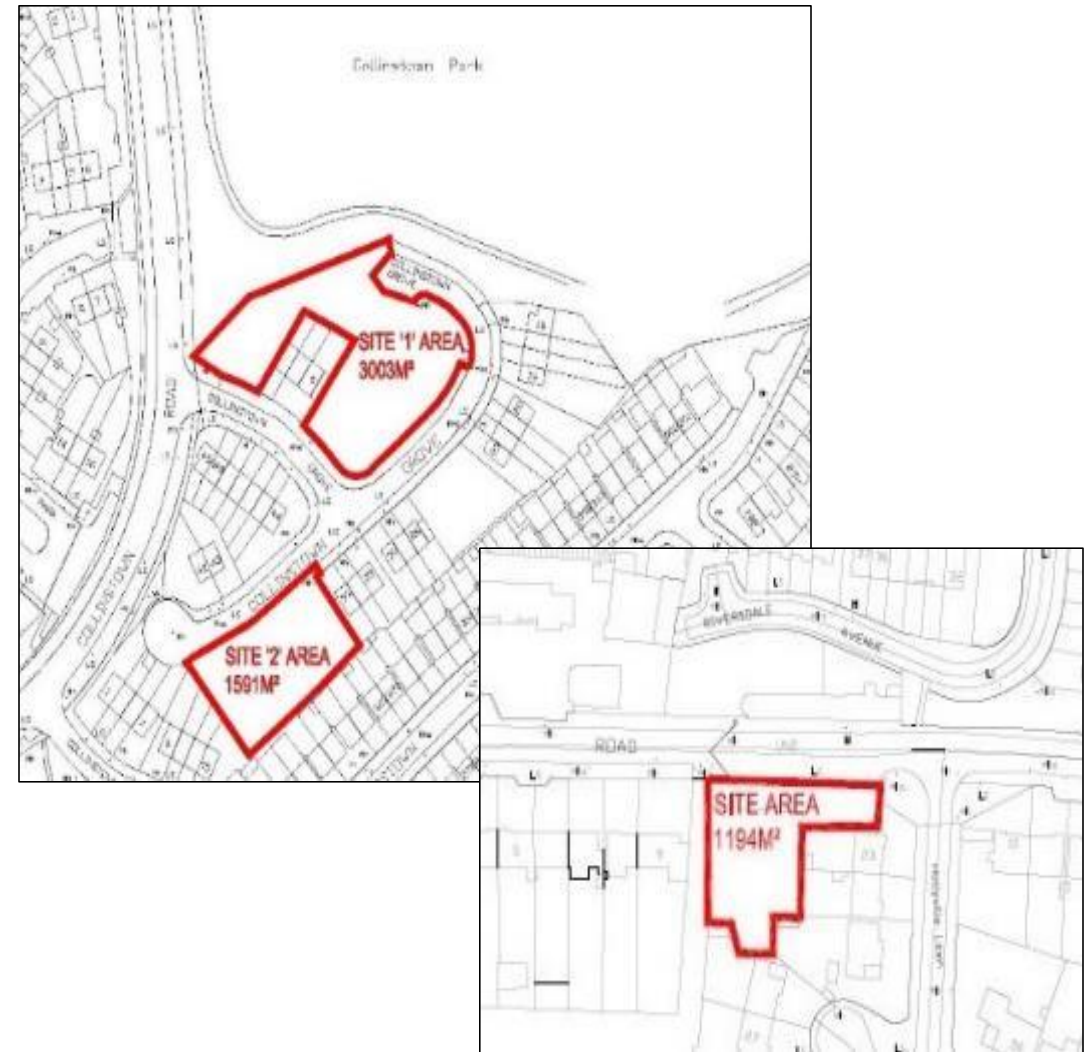


**Stocking Lane**

# SITES CURRENTLY BEING PROGRESSED FOR PART 8



**Eircom Site**



**3 AHB Sites (Collinstown/Palmerstown)**

# SITES CURRENTLY BEING PROGRESSED FOR PART 8



St. Marks Avenue



Knocklyon

# SITES UNDER ASSESSMENT



Grand Canal-Lindisfarne

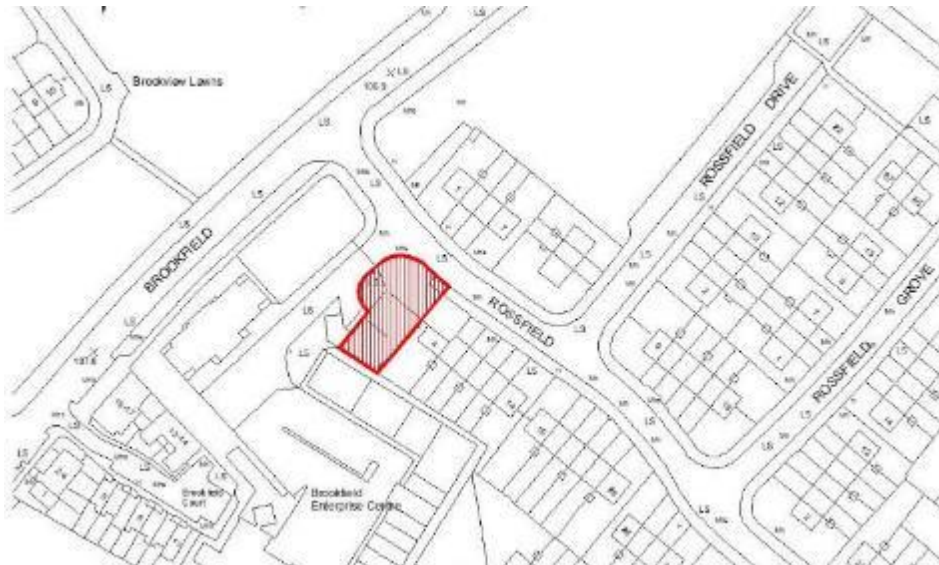


St. Marks Link Road (Ramp Road)

# SITES UNDER ASSESSMENT- (Infill Sites)



**Greenfort Gardens**



**Rosfield**





Melrose Avenue



Oatfield Crescent, Clondalkin



**Rowlagh Gardens, Clondalkin (Specific Site Location tbc)**



**St. Ronan's Crescent (26/27)**



**Fettercairn**

# LARGE CAPACITY SITES



**St.Maelruans**



**Rathcoole**



**Hazelgrove**



**Clonburris SDZ**