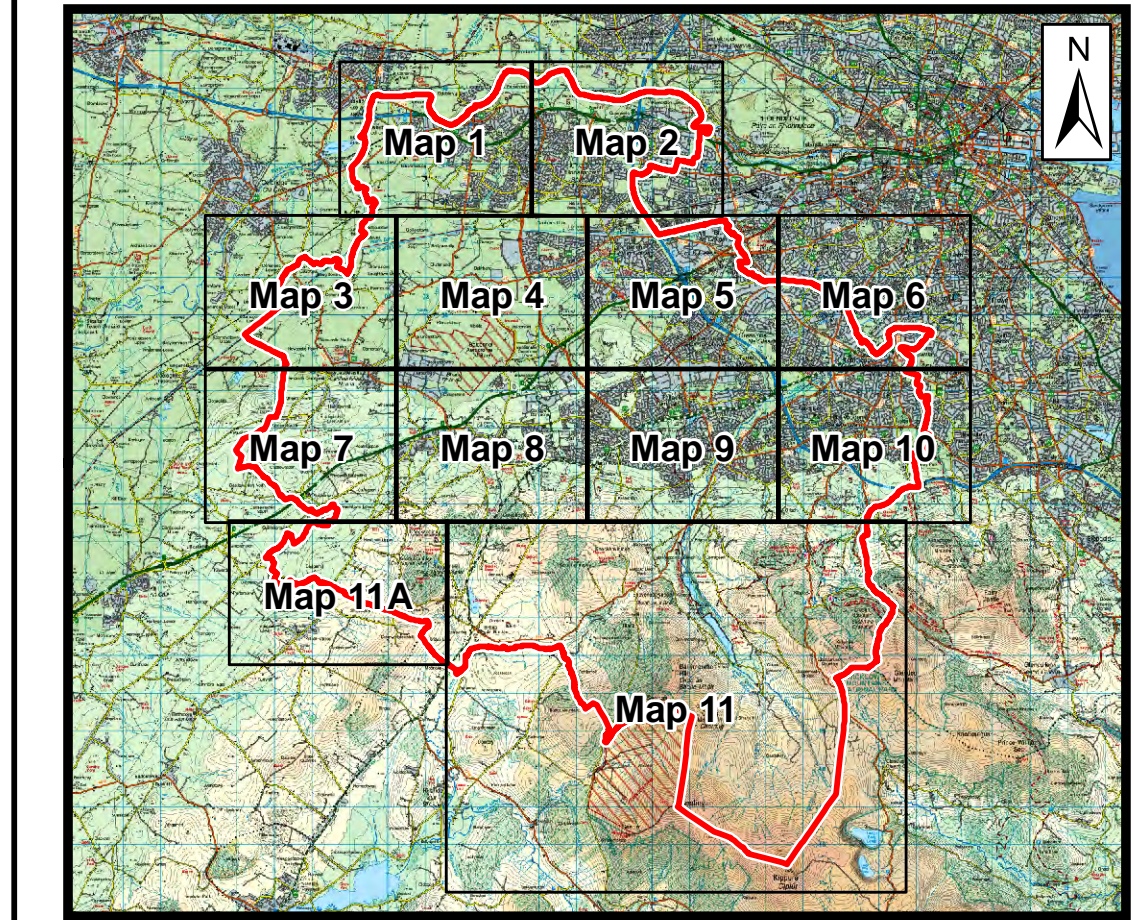
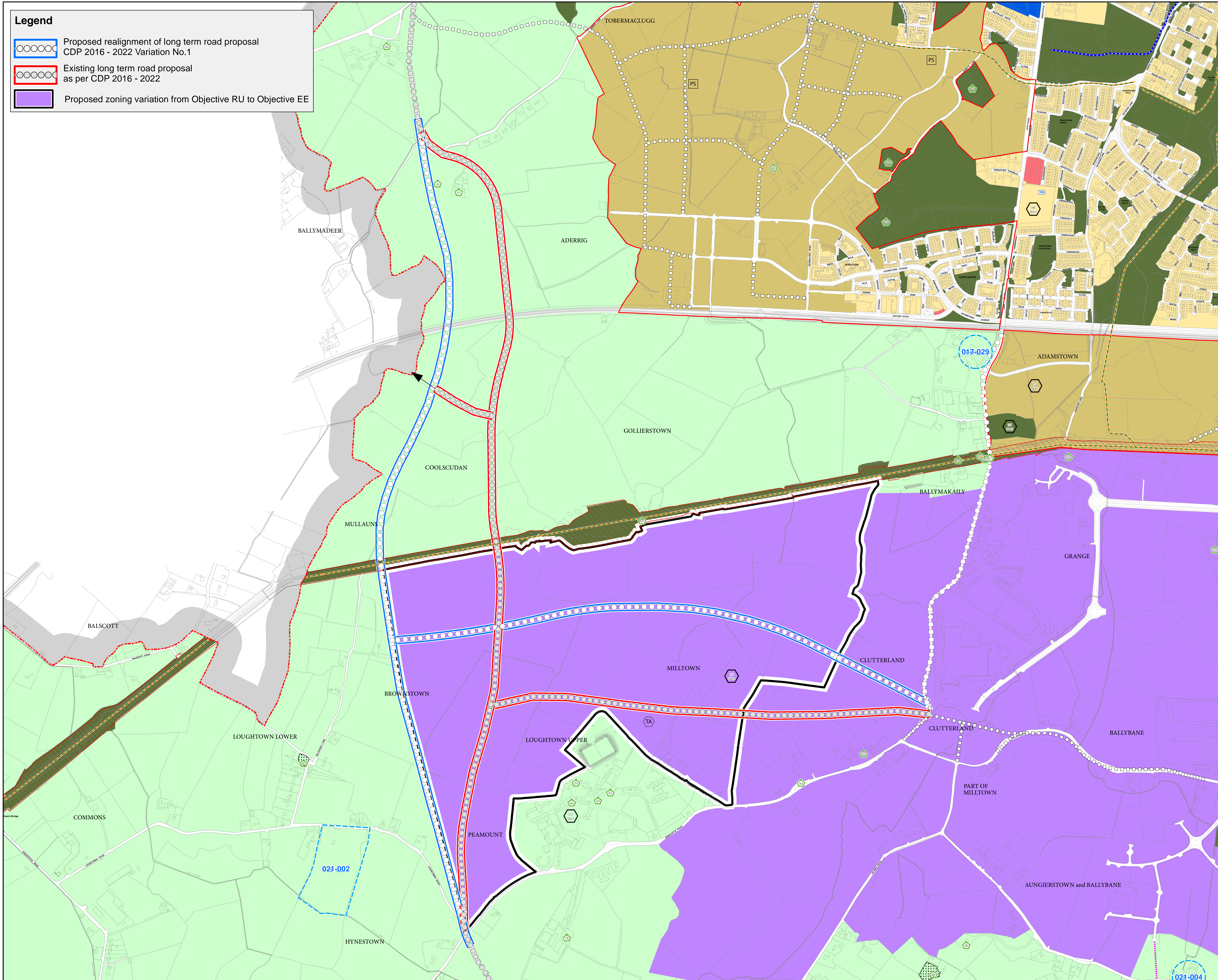


Legend

- Proposed realignment of long term road proposal CDP 2016 - 2022 Variation No.1
- Existing long term road proposal as per CDP 2016 - 2022
- Proposed zoning variation from Objective RU to Objective EE



- Use Zoning Objectives**
- Objective RES: To protect and/or improve residential amenity
 - Objective RES-N: To provide for new residential communities in accordance with approved area plans
 - Objective SDZ: To provide for strategic development in accordance with approved planning schemes
 - Objective REGEN: To facilitate enterprise and/or residential-led regeneration
 - Objective TC: To protect, improve and provide for the future development of Town Centres
 - Objective MRC: To protect, improve and provide for the future development of a Major Retail Centre
 - Objective DC: To protect, improve and provide for the future development of District Centres
 - Objective VC: To protect, improve and provide for the future development of Village Centres
 - Objective LC: To protect, improve and provide for the future development of Local Centres
 - Objective RW: To provide for and consolidate retail warehousing
 - Objective EE: To provide for enterprise and employment related uses
 - Objective OS: To preserve and provide for open space and recreational amenities
 - Objective HA (LV, DV, DM): To protect and enhance the outstanding natural character and amenity of the Liffey Valley, Dodder Valley and Dublin Mountains areas
 - Objective RU: To protect and improve rural amenity and to provide for the development of agriculture

- Specific Objectives:**
- PPS: Proposed Post Primary School
 - PS: Proposed Primary School
 - Seveso Sites
 - Specific Local Objectives (See Written Statement for Details)
 - TA: To provide for Traveller Accommodation Sites to be Selected
 - TA: To provide for Traveller Accommodation
 - TA: To protect and / or provide for a Burial Ground
 - Contour Lines
 - SDZ Planning Scheme Boundaries
 - County Boundary

- Transport**
- Junction Proposals
 - Road Proposals - Long Term
 - Road Proposals - 6 Year
 - Long Term High Capacity Public Transport (RPA Preferred Route)
 - NTA Greater Dublin Cycle Network Plan
 - Proposed Local Cycle / Pedestrian Link

- Conservation**
- To Preserve Prospects
 - Tree Preservation Order (See Written Statement For Details)
 - Record of Protected Structures (See Written Statement for Details)
 - Record of Monuments and Places (See Written Statement for Details) (For Areas of Archaeological Potential see Index Map)
 - Protect and Preserve Significant Views
 - Geological Sites for Protection
 - Bohemabreena Reservoir Catchment
 - Architectural Conservation Areas (ACA)
 - Proposed Natural Heritage Areas (pNHA)
 - Special Protection Areas (SPA)
 - Liffey Valley Special Area Amenity Order 1990 (SAAO)
 - Special Area of Conservation (SAC)

Note:
See Index map for details of approach areas and height control zones for Casement Aerodrome, Baldonnell and Backweston Aerodrome, Backweston Park.
The lines of the Transport Proposals shown on this map are diagrammatic only and are subject to change during the detailed design process

Ordnance Survey Ireland Licence No. 2016/23/CMA/South Dublin County Council
SCALE 1:5,000
0 75 150 300 450 600 metres

Land Use Planning and Transportation Department

Laura Leonard
BA, M.BA
A / Director
Brian Keaney
MIPI MRTPI
Senior Planner