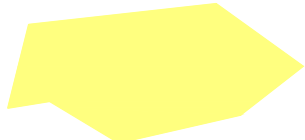


LEGEND



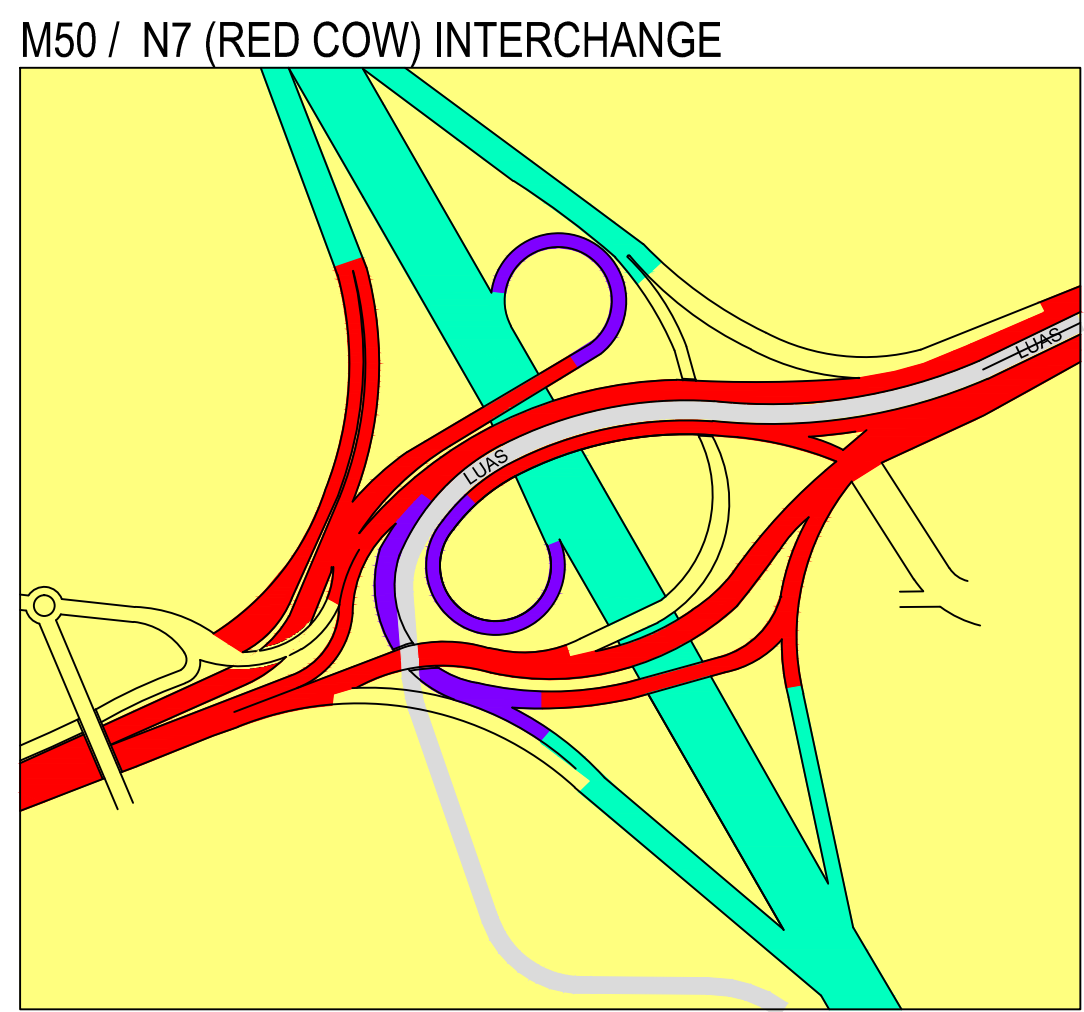
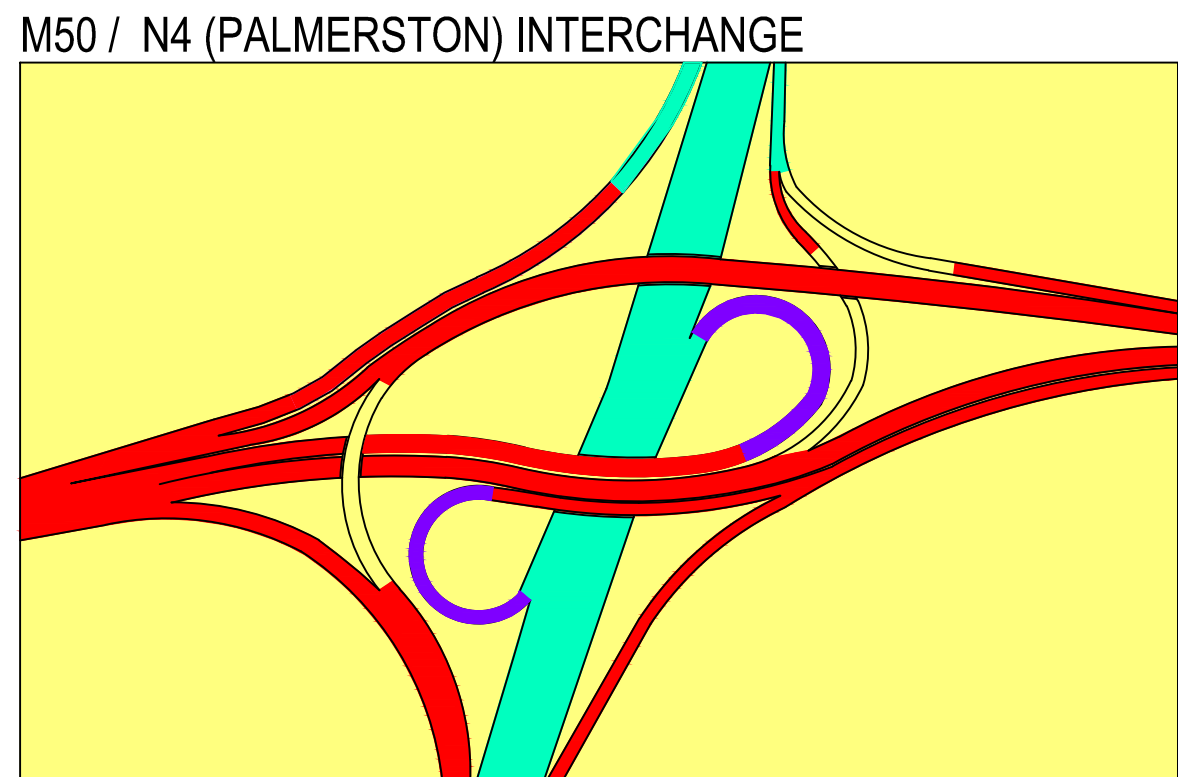
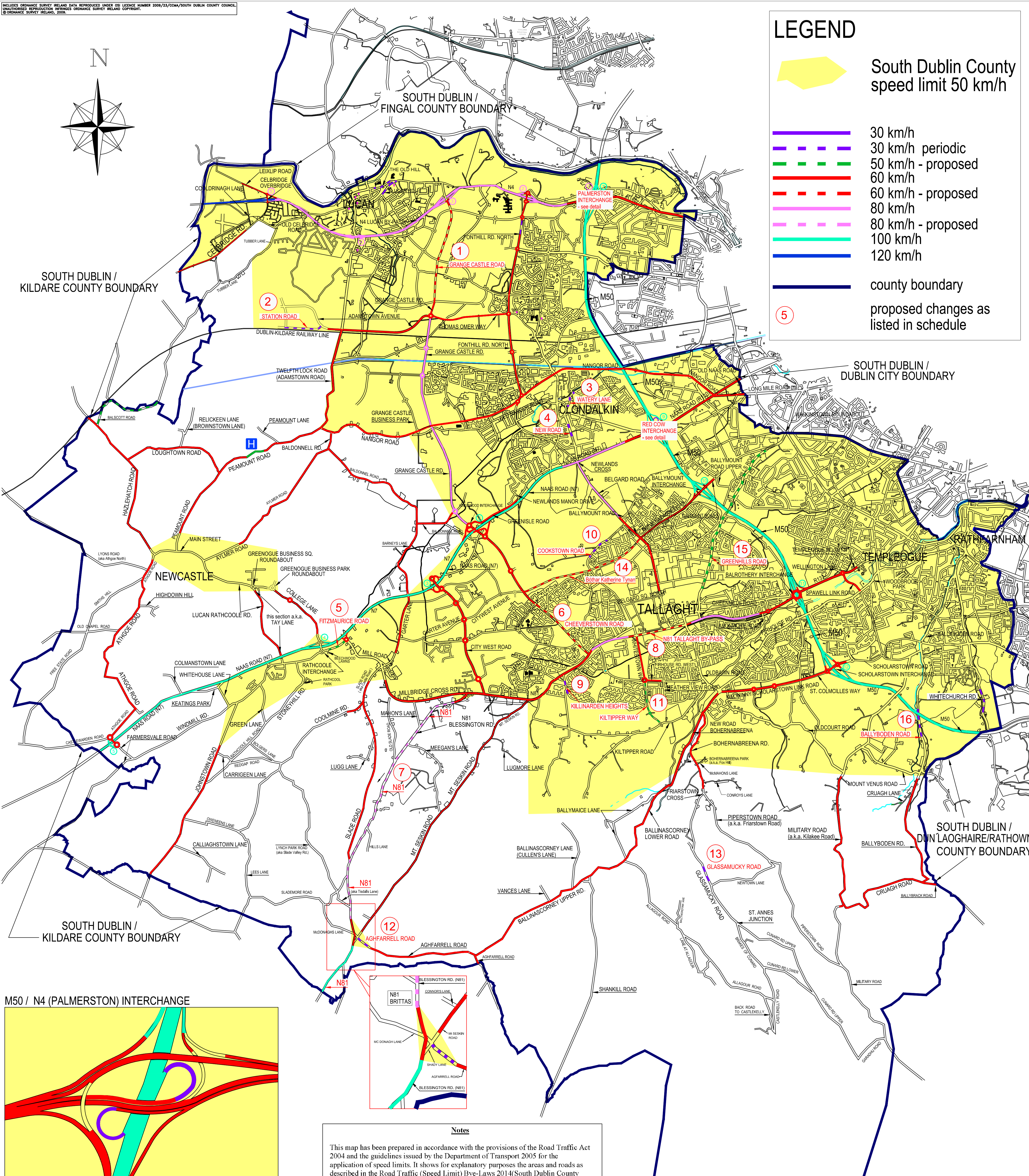
South Dublin County
speed limit 50 km/h

- 30 km/h
- 30 km/h periodic
- 50 km/h - proposed
- 60 km/h
- 60 km/h - proposed
- 80 km/h
- 80 km/h - proposed
- 100 km/h
- 120 km/h

county boundary

proposed changes as
listed in schedule

5



Notes

This map has been prepared in accordance with the provisions of the Road Traffic Act 2004 and the guidelines issued by the Department of Transport 2005 for the application of speed limits. It shows for explanatory purposes the areas and roads as described in the Road Traffic (Speed Limit) Bye-Laws 2014(South Dublin County Council).

For this purpose the county is divided into two categories:

1. Built-Up Area (shaded green)
2. Non Built-Up Area(between the built-up area and the county boundary)

General speed limits apply to the following categories, (except where special speed limits apply).

1. Built-up area speed limit is 50 km/h
2. Regional/Local road speed limit is 80km/h
3. National road speed limit is 100km/h
4. Motorway speed limit is 120km/h

Special speed limits(where general speed limits are considered inappropriate) are highlighted by a coloured line as per the legend at the top of this map and are designated as follows.

1. Purple = 30km/h
2. Green = 50km/h
3. Red = 60km/h
4. Pink = 80km/h
5. Pale blue = 100km/h
6. Blue = 120km/h

Periodic Special Speed Limits of 30 km/h are highlighted by a broken Purple line as per legend at the top of this map and are designated as follows:-

1. Broken Purple = 30km/h periodic

PRESENT WHEN THE COMMON SEAL OF SOUTH DUBLIN COUNTY COUNCIL WAS AFFIXED HERE TO:-	
MAYOR / DEPUTY MAYOR / NOMINATED EMPLOYEE OF SOUTH DUBLIN COUNTY COUNCIL	
SDCC Seal Affixed _____ 2014	
2	
1	
REV.	DESCRIPTION
2	
1	
REV.	DATE
ROADS DEPARTMENT TRAFFIC & TRANSPORTATION COUNTY HALL, TALLAGHT, DUBLIN 24. O.S. SHEET NO.	
E. Traffic DIRECTOR OF ROADS & PLANNING J. Mc Loughlin B.E.C.Eng., F.I.E.A., MBA SENIOR ENGINEER	
SCALE	N.T.S.
DATE	February 2014
CHECKED	
PROJECT	SOUTH DUBLIN SPEED LIMITS
DESIGNED BY	V. Heywood
APPROVED BY	
TITLE	SPEED LIMIT REVIEW 2014
DRAWING NUMBER	01/001/VH14
C:\Users\Speed.Limits\log	