
Presentation to ACM, 17th September 2014

Village Initiative 2014

Clondalkin, Rathcoole, Newcastle





Village Initiative 2014 Newcastle

Extents

LEGEND

BUILDING PATCH

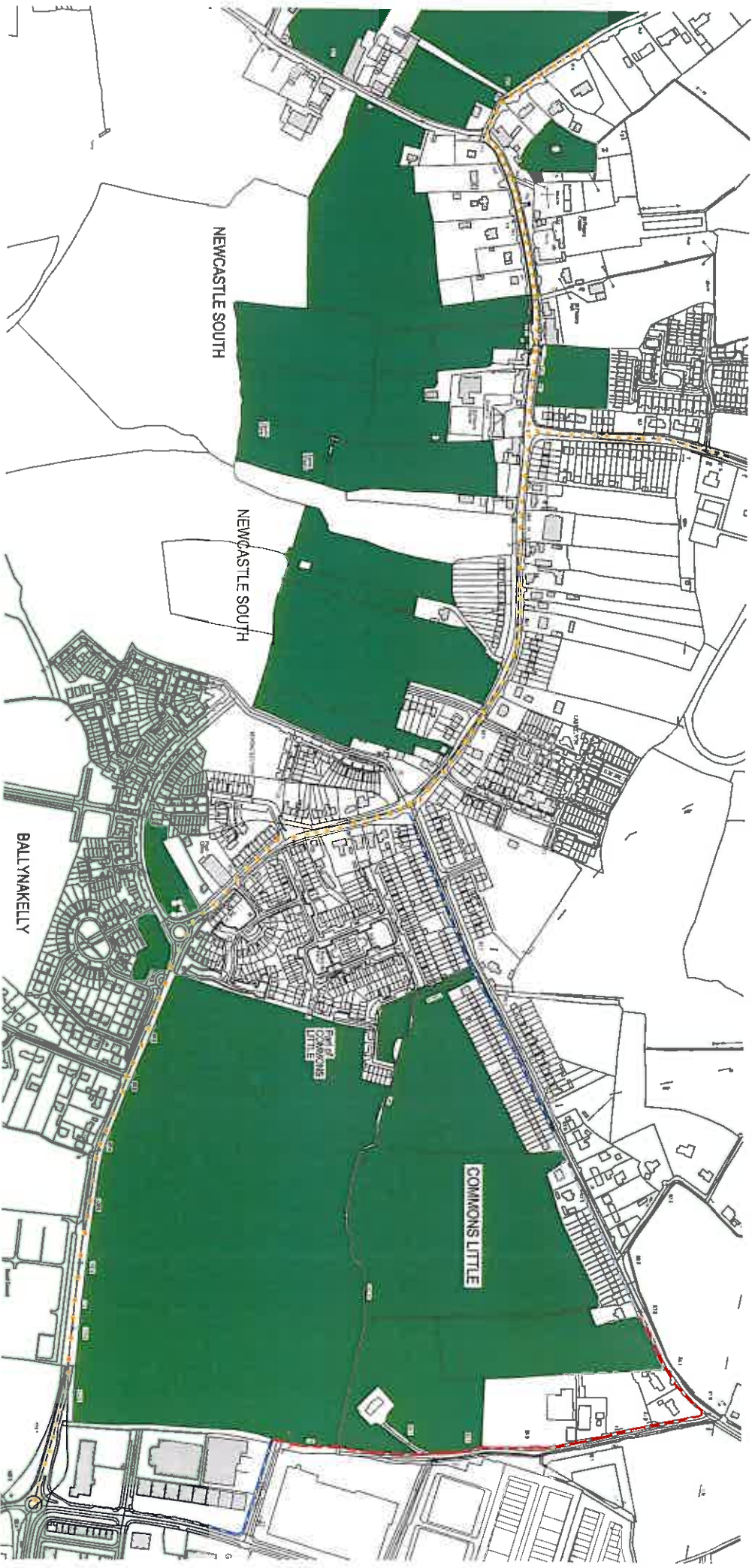


Village Initiative 2014 Newcastle

cycle and walking Routes

LEGEND

- CYCLE ROUTES AS PROPOSED NIA
- EXISTING FOOTPATH
- PROPOSED FOOTPATH
- LANDMARKS
- BUILDING HATCH



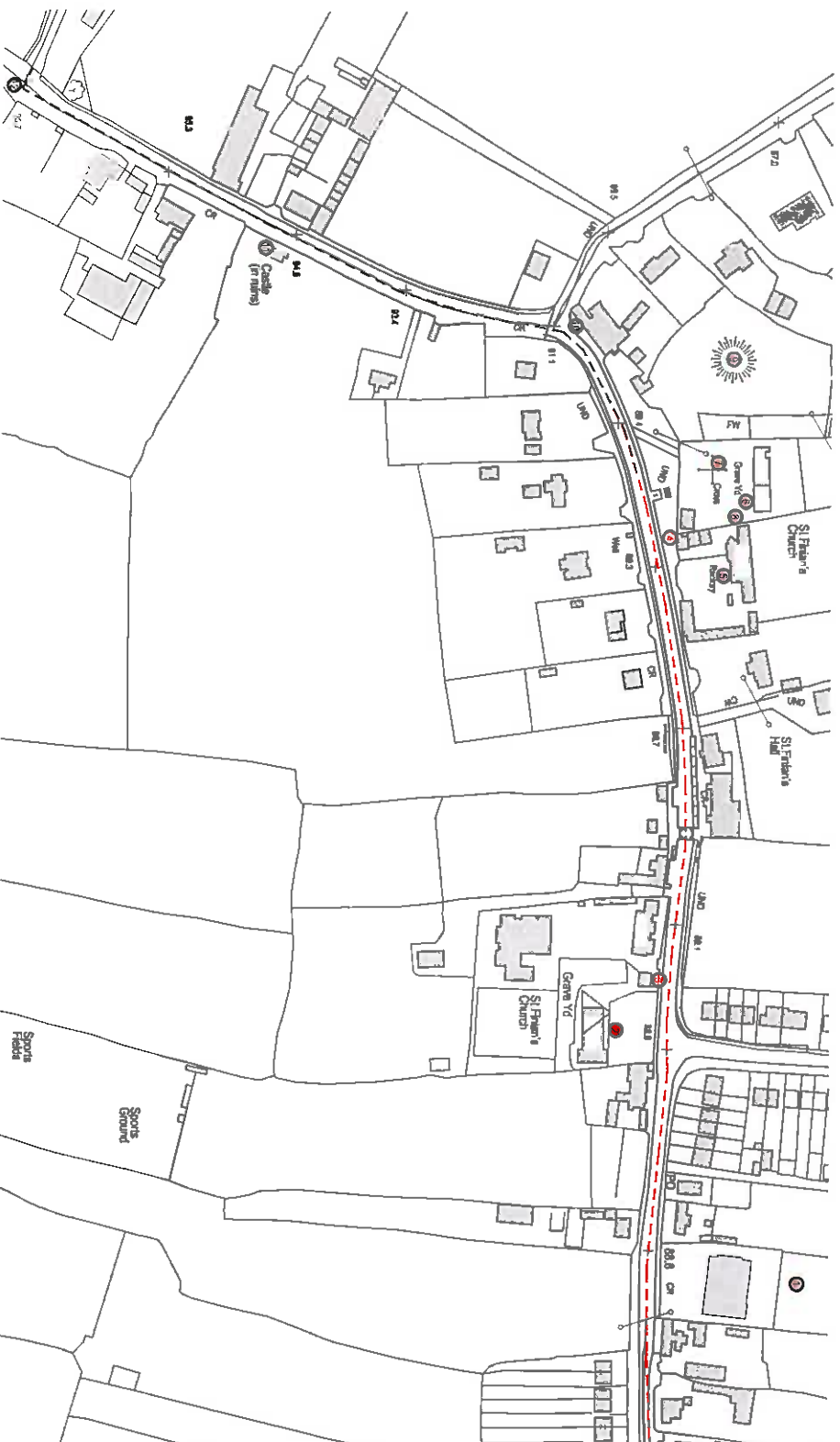
Village Initiative 2014 Newcastle

1. *What is the purpose of this study?*

LEGEND

--- WALKING ROUTE

LANDMARKS

BUILDING MATCH

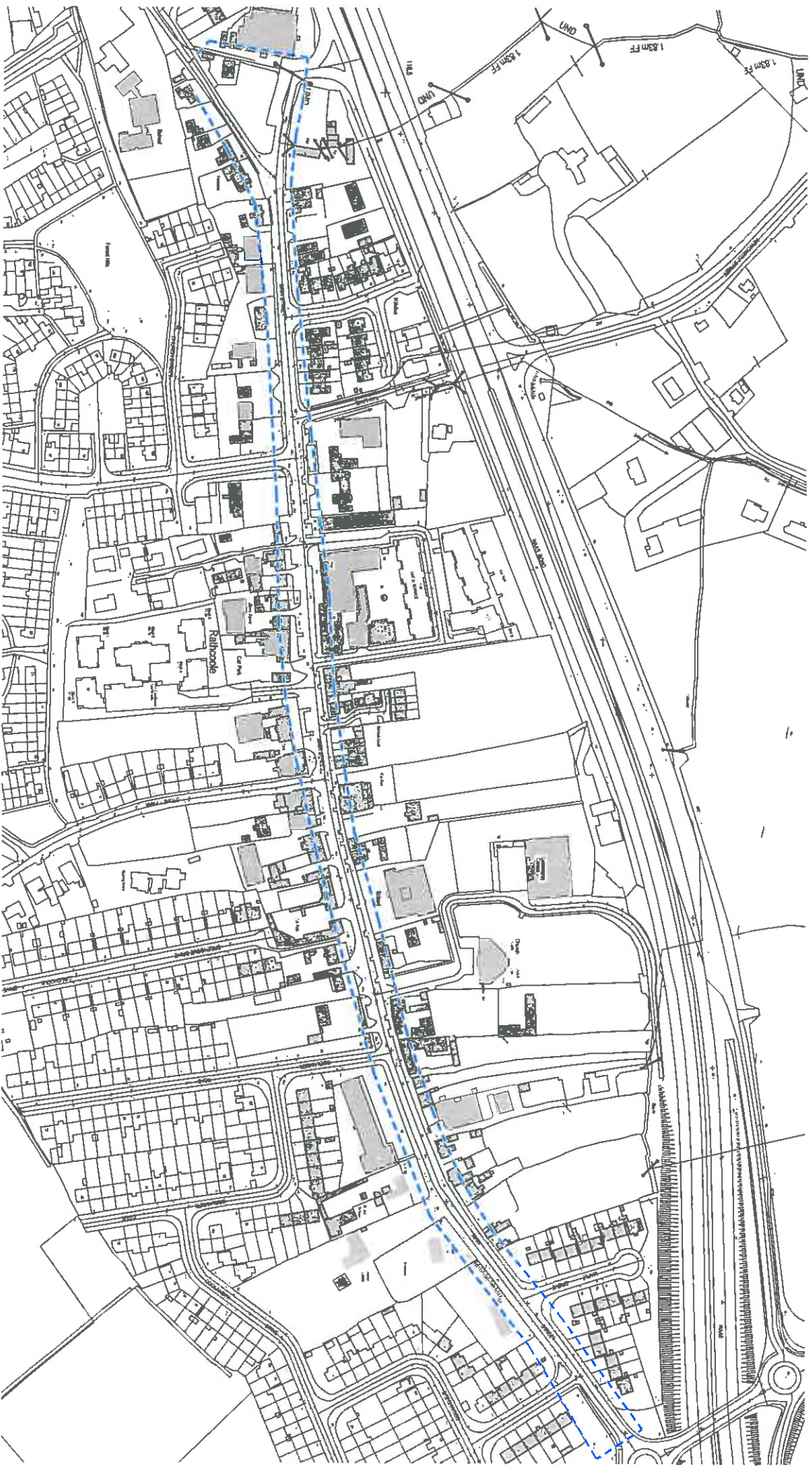
NEWCASTLE WALKING TOUR KEY

- BURAGE R. OTS
ST. FINIAN'S R.C. CHURCH
VILLAGE SCHOOL
TOWER HOUSE
GLEBE HOUSE
ST. FINIAN'S CHURCH OF IRELAND
EARLY CHRISTIAN CROSS
PRE-CHRISTIAN PILLAR STONE
KORRAN MOTTE
THE RUINS OF MÆVOY'S PUBLIC HOUSE
TOWER HOUSE AND MEDIEVAL WALL
ST. FINIAN'S WELL



Village Initiative 2014

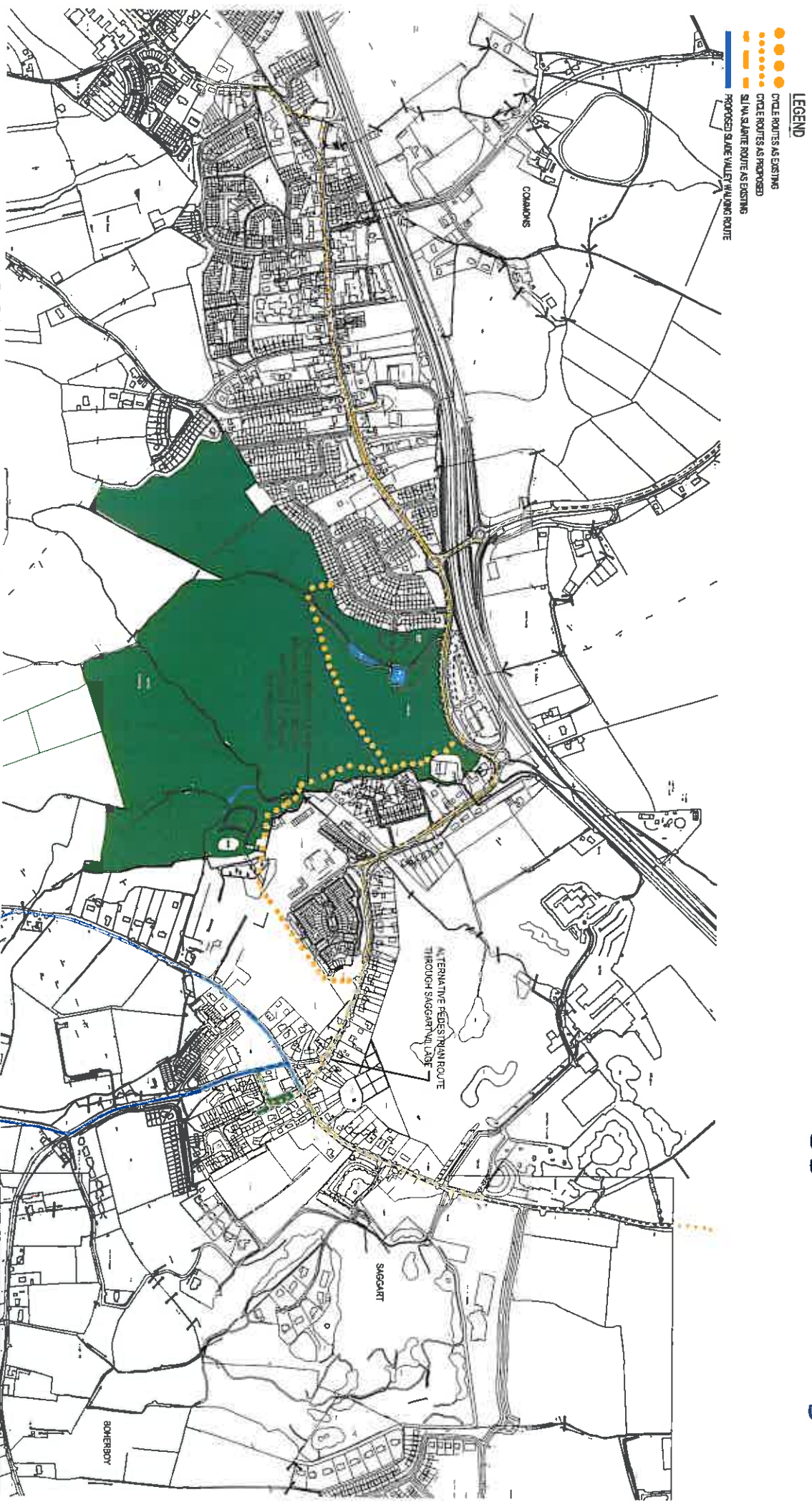
Rathcoole



Village Initiative 2014

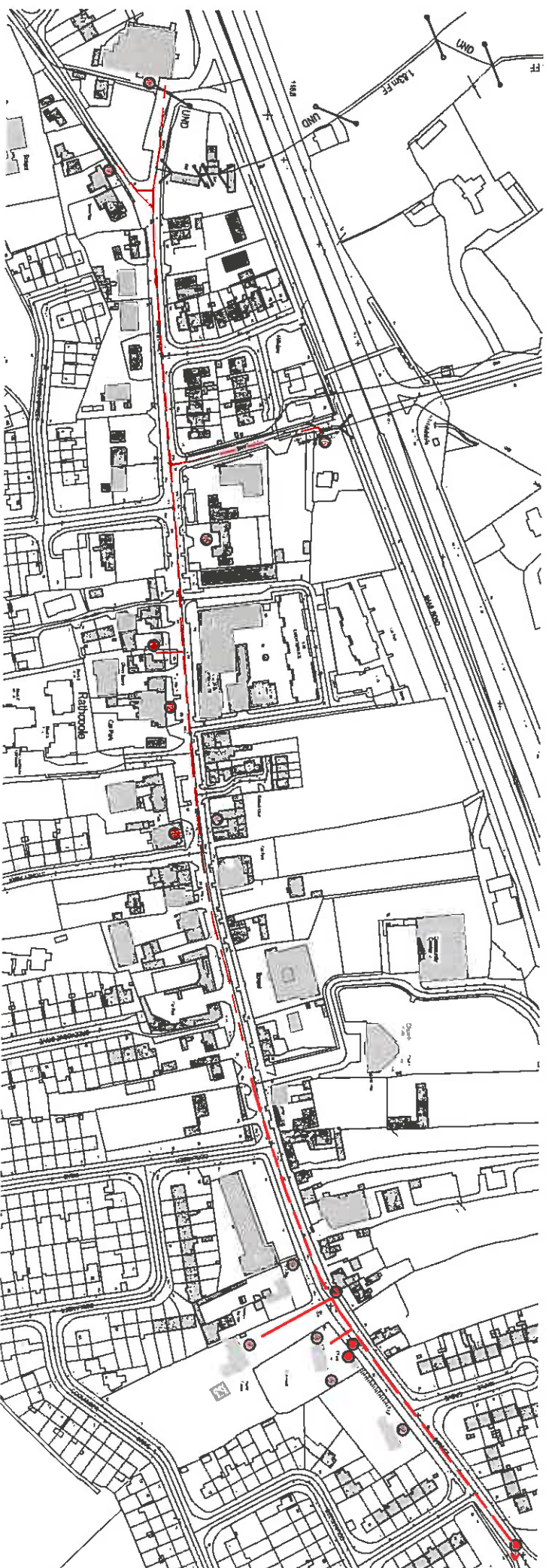
Rathcoole

Cycle and walking routes - the existing cyclepath and footpath connections between Rathcoole and Saggart villages



Village Initiative 2014 Rathcoole/Saggart

walking Tour and Heritage Trail



Village Initiative 2014

Rathcoole

- RATHCOOLE WALKING TOUR KEY**
- RATHCOOLE PARK
 - RATHCOOLE HOUSE
 - ANGLICAN CHURCH
 - KENNEDY FAMILY CRYPT
 - VERSCHOLLE FAMILY PLAT
 - 1798 UPRISING COMMEMORATIVE PLAQUE
 - THE HEALTH CENTRE, FORMER RECTORY
 - SEWER VENT (INDUSTRIAL HERITAGE)
 - CARPA STATION, BUILT 1890
 - BAURNAFEA HOUSE PUBLIC HOUSE
 - COTTAGES, SITE OF PYRAMS BAKERY
 - THE RATHCOOLE INN
 - THE FORMER COURT OF PETTY SESSIONS
 - 1798 UPRISING COMMEMORATIVE MONUMENT
 - THE FORMER GLEBE HOUSE
 - ST. BRIGID'S WELL (SITE OF)
 - THE FORMER SCOUTS' DEN AND NATIONAL SCHOOL
 - THE POINT STIL PUBLIC HOUSE

Proposals

LEGEND

- PAVING TYPE 1
- PAVING TYPE 2
- PAVING TYPE 3
- PAVING PATCH
- NEW TREE
- STONE BENCH

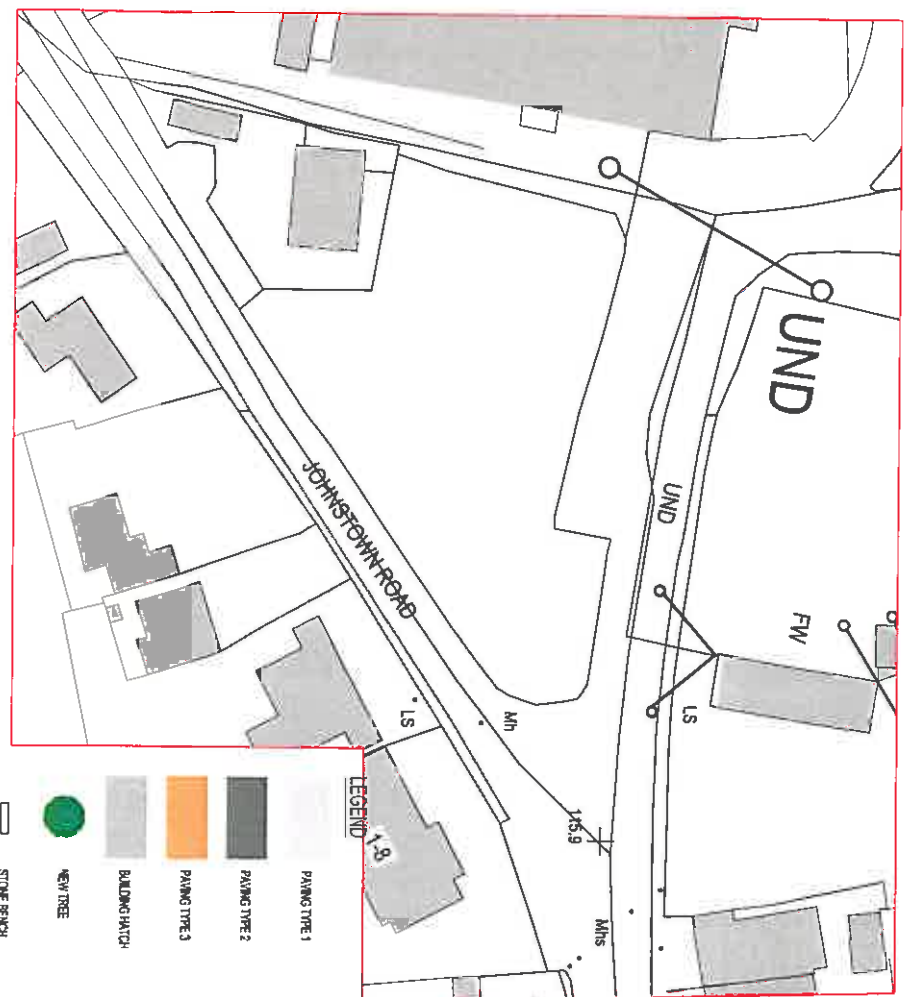


Village Initiative 2014

Rathcoole

Proposals-Village Green

Before



After



Village Initiative 2014

Rathcoole

Proposals-Village Green

Before



After



Village Initiative 2014

Rathcoole

Proposals - Small Plaza

Before



After (as built)



Village Initiative 2014

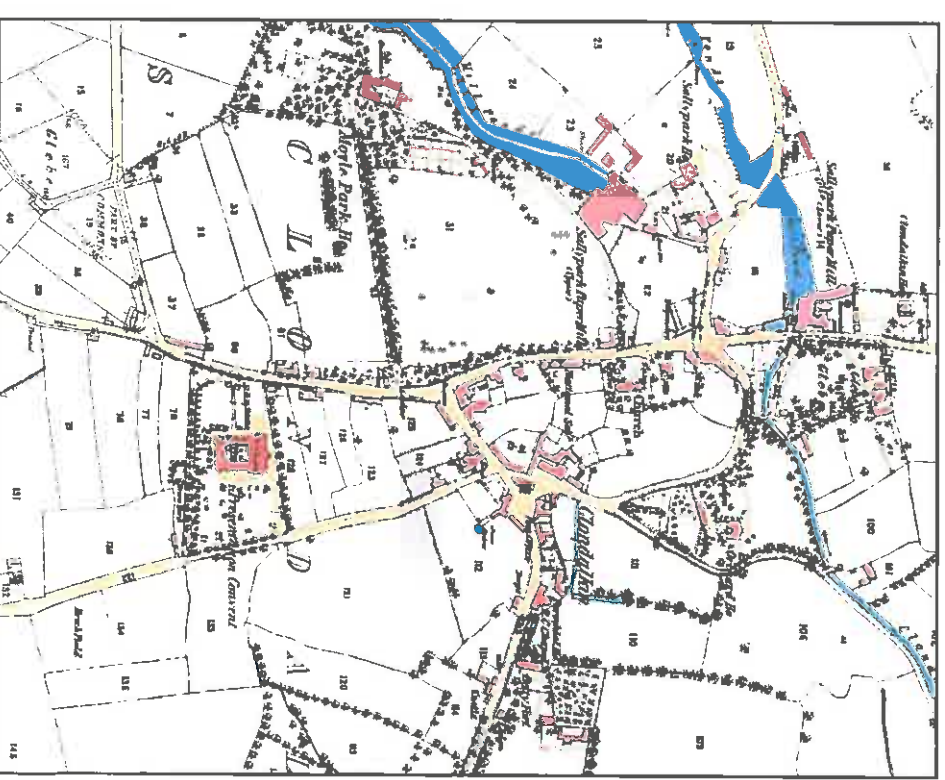
Rathcoole

Proposals - Small Plaza



Village Initiative 2014

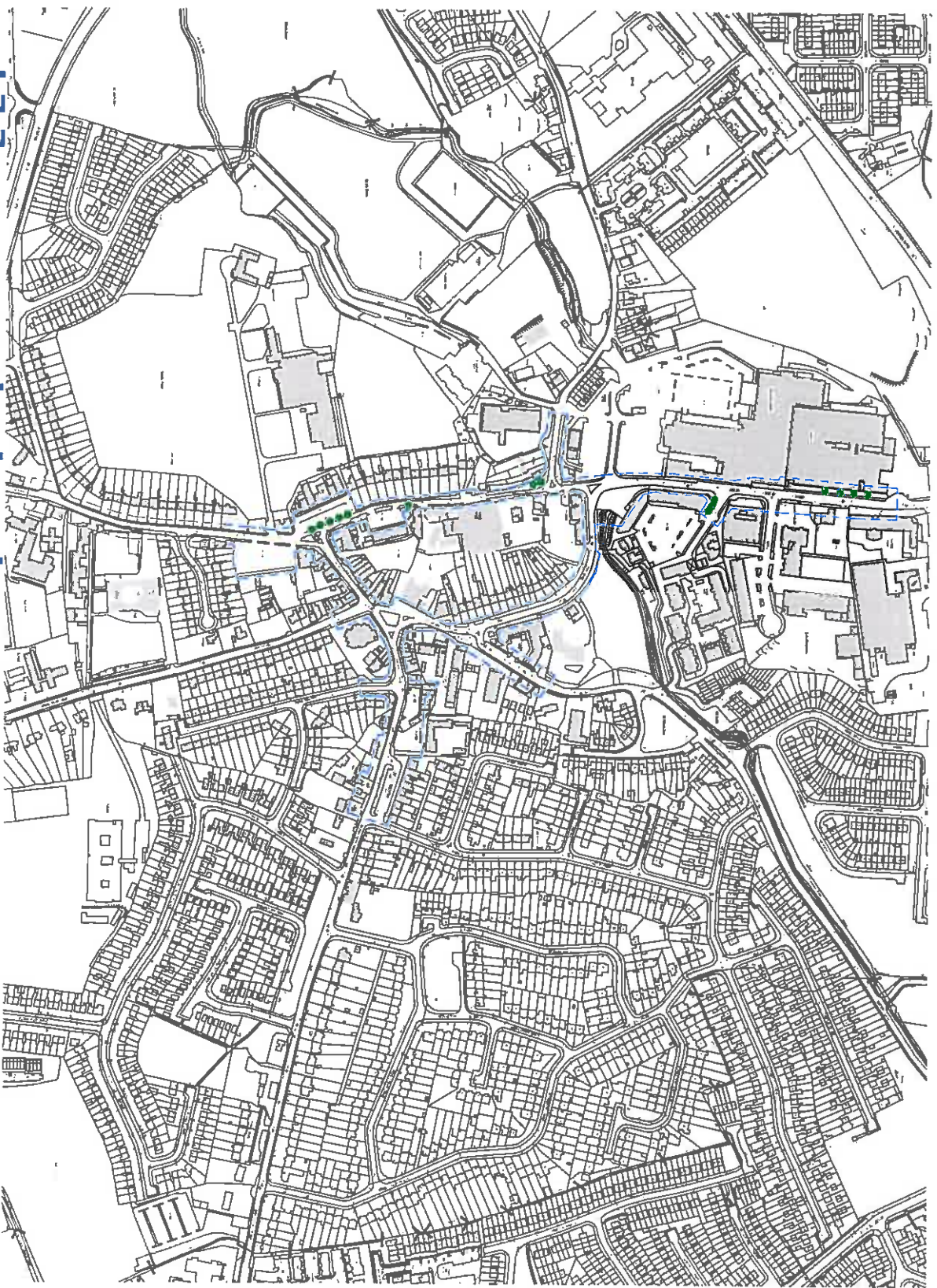
Rathcoole



Village Initiative 2014

Clondalkin

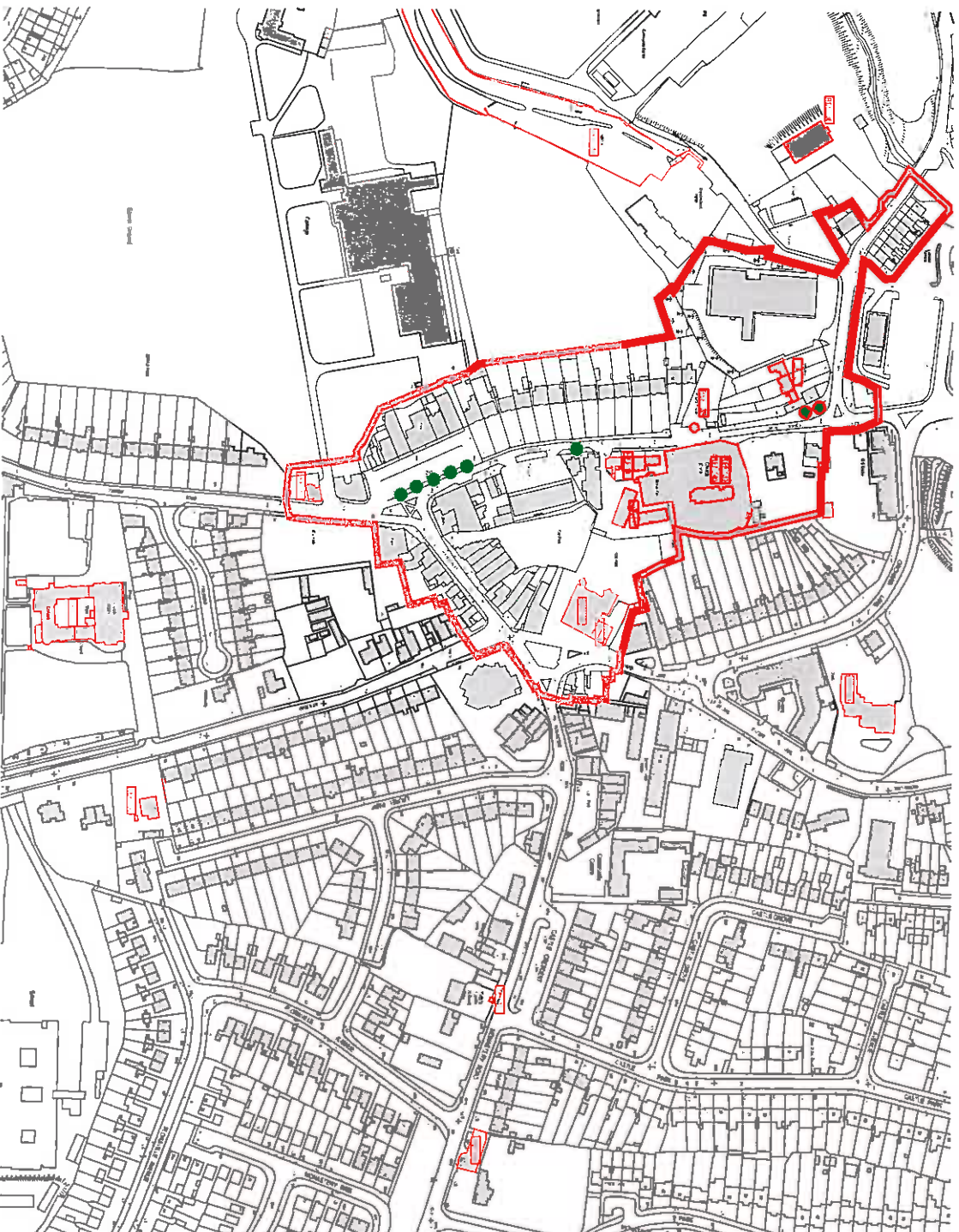
Extents



Village Initiative 2014

Clondalkin

Protected structures and Architectural conservation Area



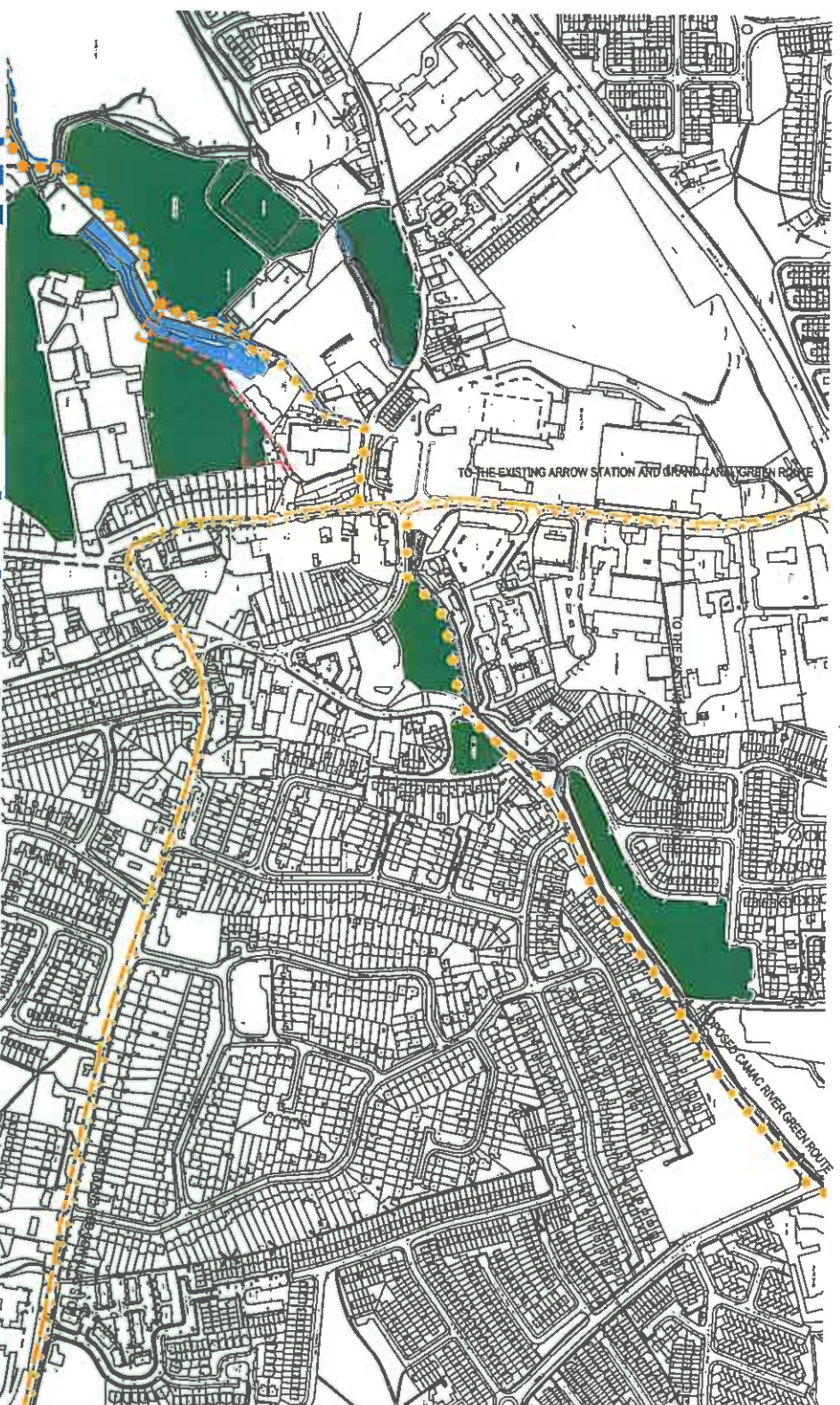
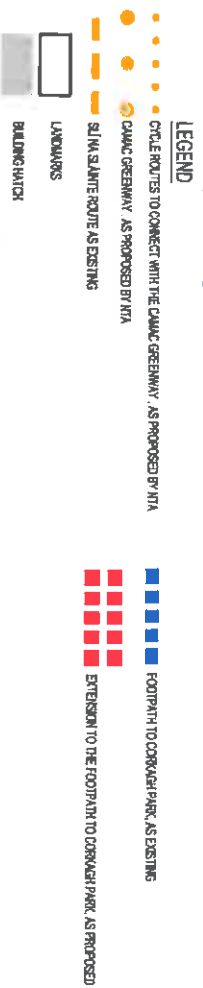
LEGEND

- REF 134 INDICATES A PROTECTED STRUCTURE
- CLONDAALKIN VILLAGE ARCHITECTURAL CONSERVATION AREA CLONDAALKIN VILLAGE ARCHITECTURAL CONSERVATION AREA
- REF 134. DETACHED FOUR BAY TWO STOREY HOUSE
- REF 136. DETACHED FIVE BAY TWO STOREY HOUSE
- REF 137. TWO BAY SINGLE STOREY HOUSE WITH DORMER ATTIC
- REF 138. STONE ROUND TOWER, CHURCH & CROSS (RM)
- REF 139. CHURCH (RM)
- REF 140. CHURCH SITE OF (RM)
- REF 141. TWO STOREY HOUSE TERRACE (3) & FRONTING BOUNDARY WALLS
- REF 143. SEMI DETACHED THREE BAY TWO STOREY BUILDING
- REF 146. SEMI DETACHED FIVE BAY TWO STOREY PUBLIC HOUSE
- REF 147. STONE CASTLE (RUN) (RM)
- REF 148. MILL POND
- REF 149. TWO STOREY LIBRARY
- REF 153. DETACHED MULTIPLE BAY SINGLE STOREY FORMER GATE LODGE
- REF 156. DETACHED THREE BAY SINGLE STOREY OVER BASEMENT HOUSE
- REF 158. CHURCH AND CONVENT

Village Initiative 2014

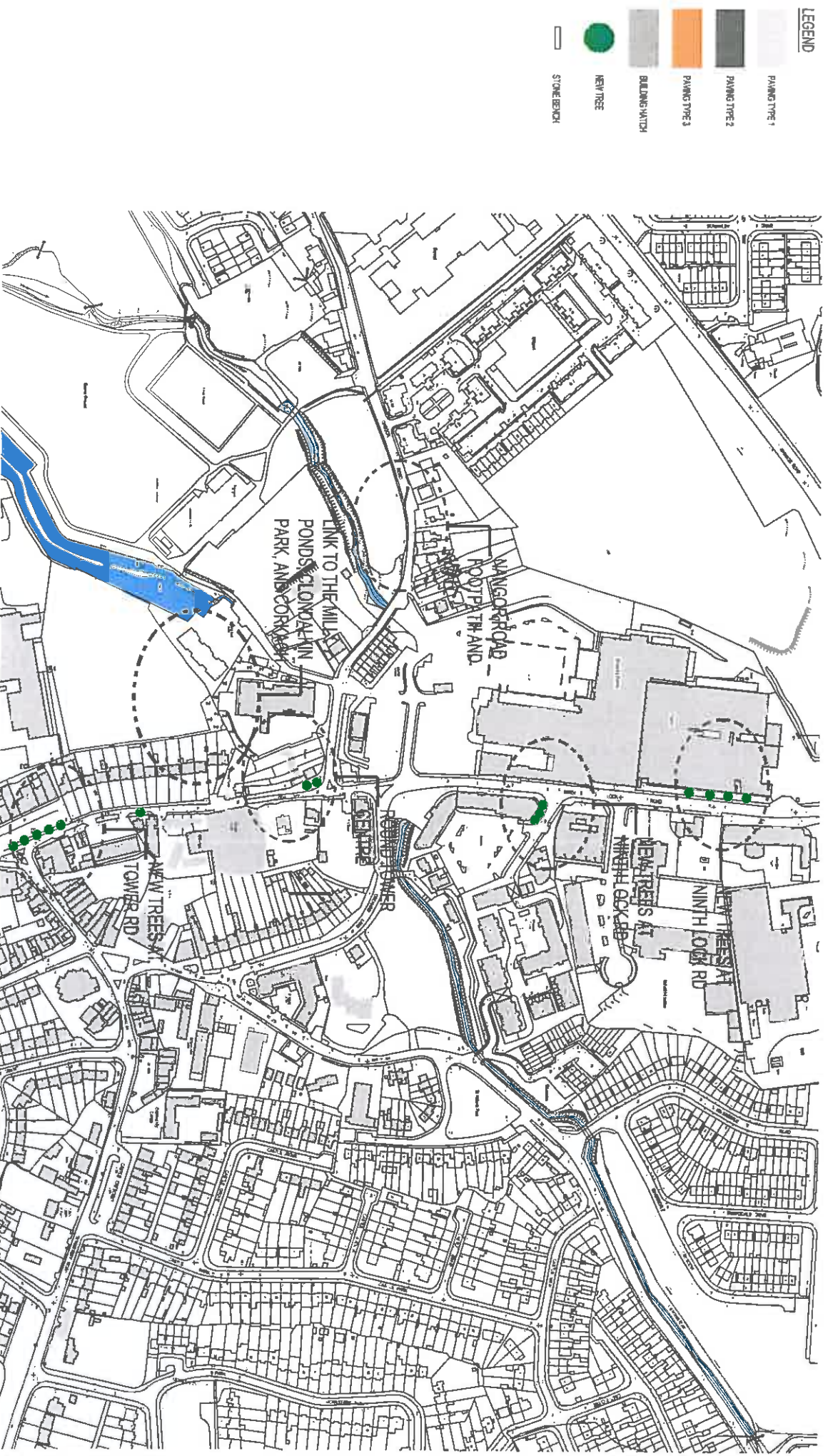
Clondalkin

Cycle and walking Routes - the proposed connections to corkagh park, the Grand canal, the river Camac and the N7



Village Initiative 2014

Proposals



Village Initiative 2014

Clondalkin

Proposals-Old Nangor Road, new footpath and stone wall

Before



After



Village Initiative 2014

Clondalkin

Proposals- Tree planting on Tower Road

Before

After



Village Initiative 2014

Clondalkin

Proposals- Tree planting on Ninth Lock Road

Before



After



Village Initiative 2014

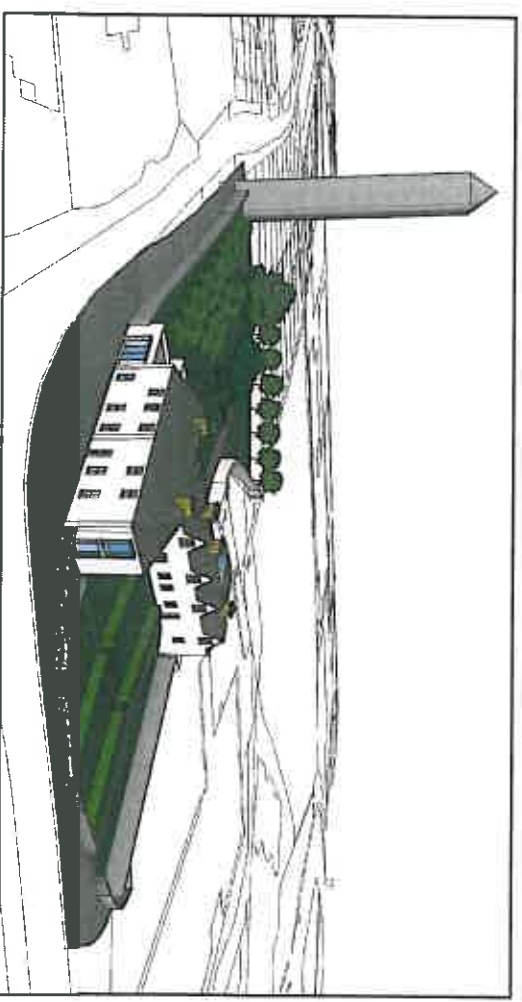
Clondalkin

Proposal 1 - The Round Tower Centre

Before



After



Village Initiative 2014

Clondalkin