

**Meeting of Lucan Area Committee
Tuesday 28th January 2014
Headed Item No. 16**

**PROPOSED FIVE YEAR PLAY SPACE PROGRAMME
LUCAN ELECTORAL AREA**

A presentation was made to the Corporate Policy Group and the Council in 2013 of the intention of the Council to undertake a Five Year Playground Programme commencing in 2014: the sixteen sites proposed in the Lucan Electoral Area are shown below.

Location	Type	Timescale
Woodfarm Acres	Local	2014
Griffeen Avenue	Local	2014
Waterstown Park	Regional	2015
Griffeen Valley Park	Regional	2015
Sarsfield Park, Lucan	Local	2015
Ballyowen Park	Neighbourhood	2016
Lucan Demesne	Regional	2016
Finnstown	Local	2016
Willsbrook Park	Neighbourhood	2017
Hillcrest Estate Lucan	Local	2017
Glenaulin Park, Palmerstown	Neighbourhood	2017
Beechpark	Local	2018
Hillcrest Estate Lucan	Local	2018
Esker Park	Neighbourhood	2018
Grange Park	Neighbourhood	2018

It is intended to complete this programme within a five year period.

In the Lucan Electoral Area the two locations proposed for 2014 are:

- **Griffeen Avenue**
- **Woodfarm Acres**

These locations are shown on the maps at the end of this document. The two locations at Griffeen Avenue and Woodfarm Acres were chosen on the basis of

- Need
- Distance from an existing facility
- Site suitability

There are 3 categories of Play Space proposed in the Five Year Programme:

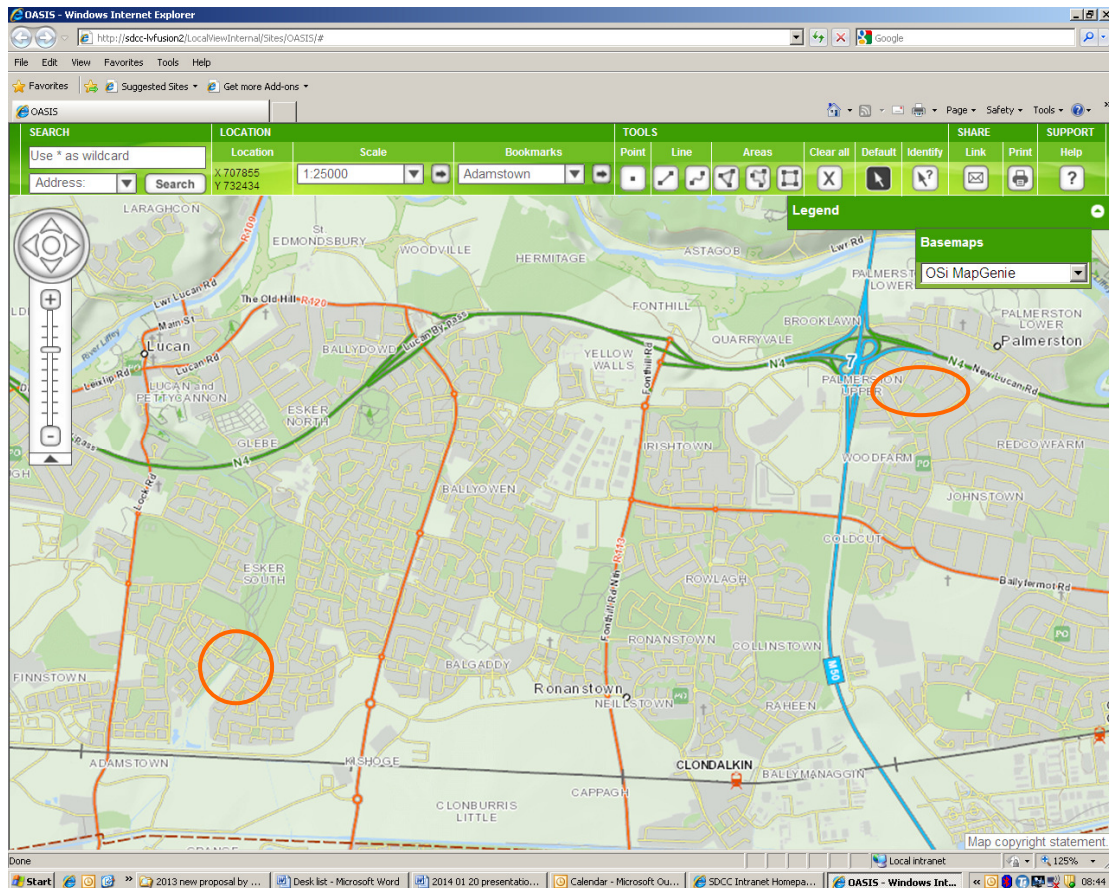
- Local

- Neighbourhood
- Regional

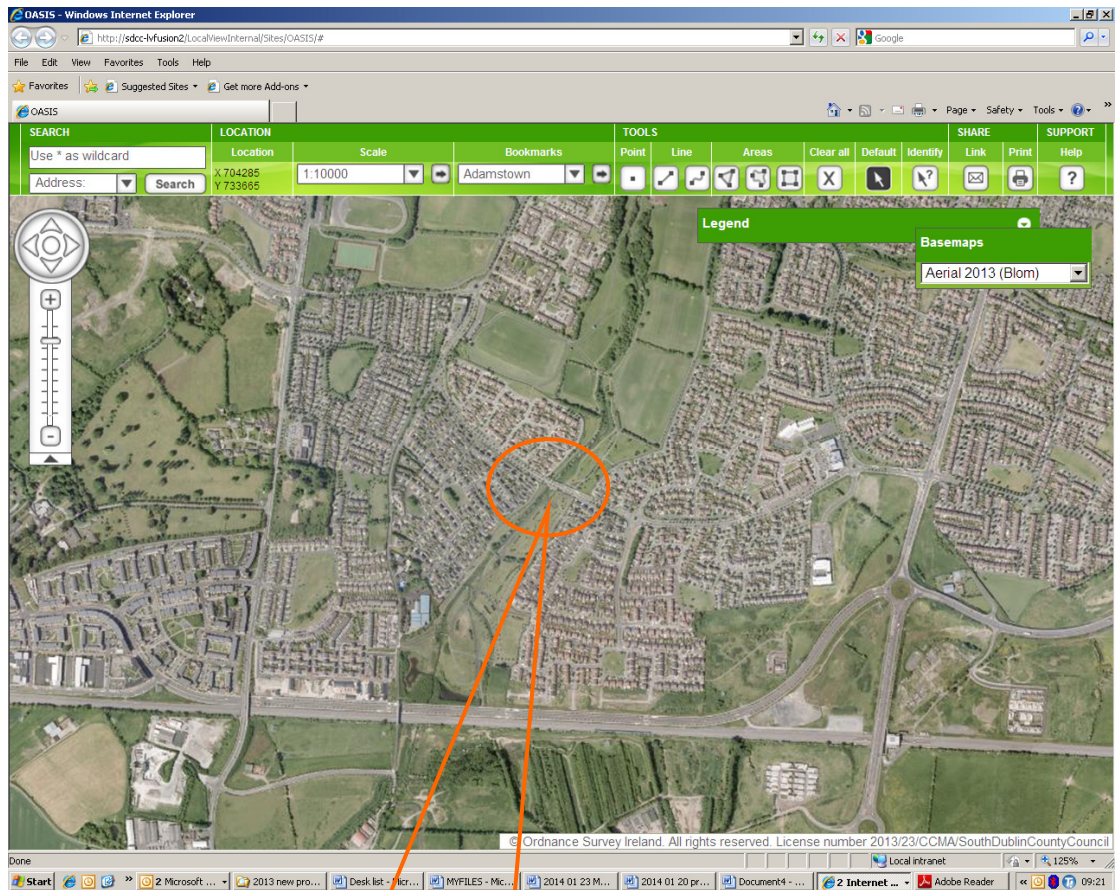
The Play Space Programme in 2014 is aimed in particular at local open spaces that can cater for the 0 to 8 age group and that will allow for access by walking from local residential areas. There will be a focus on Natural Play as well as formal play items. Natural Play is facilitated by the provision of items such as boulders, logs, wildflower areas, tree planting and mounding that will stimulate children to create their own play.

It is intended to consult with local organisations concerning the programme including with the local residents groups, Comhairle na nÓg, adjacent community centres and schools. In order to progress the programme it will be necessary to do this consultation in the most efficient way possible and this presentation to the Elected Members is the start of that process.

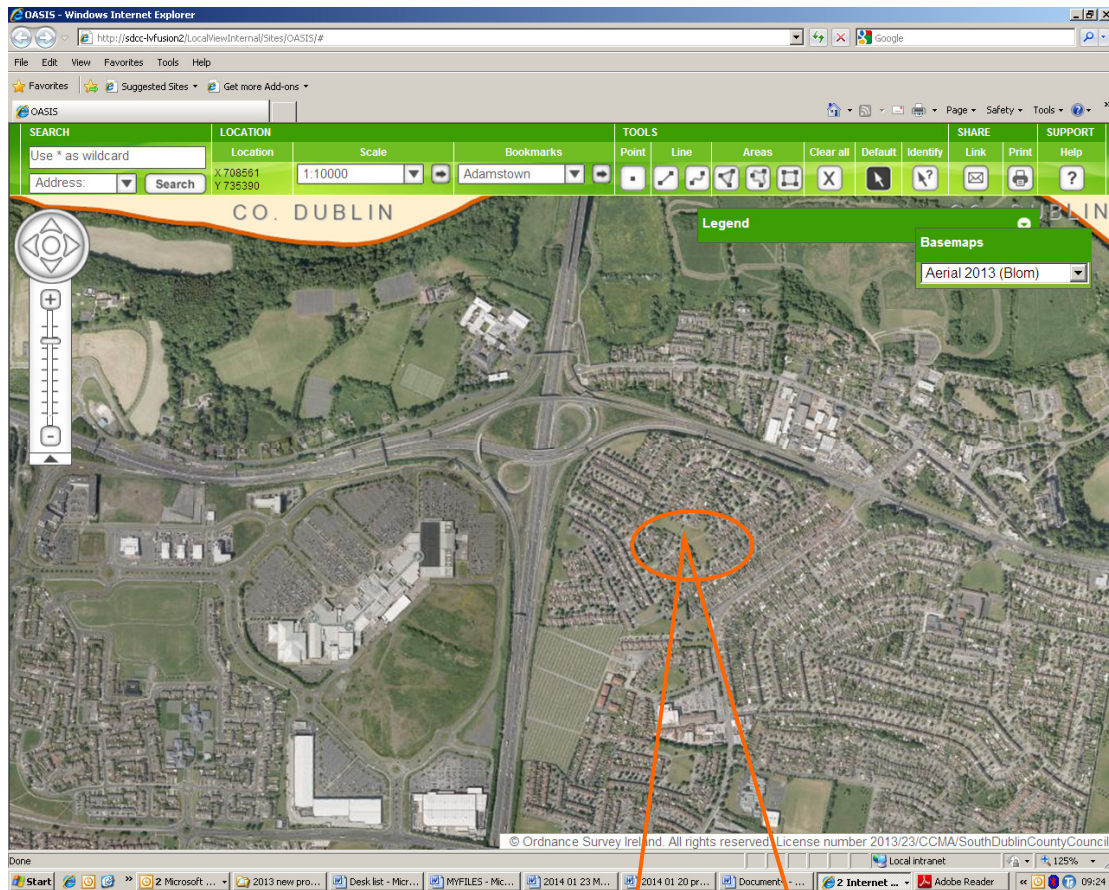
The proposed locations are shown on the following maps:



**Proposed locations for Play Spaces in Lucan Electoral Area 2014
at
Griffen Avenue and Woodfarm Acres**



Proposed play space at Griffeen Avenue



Proposed play space at Woodfarm Acres