

**Meeting of Tallaght Area Committee  
Monday 27th January 2014  
Headed Item No. 3**

**PROPOSED FIVE YEAR PLAY SPACE PROGRAMME  
Tallaght Central and South ELECTORAL AREA**

A presentation was made to the Corporate Policy Group and the Council in 2013 of the intention of the Council to undertake a Five Year Playground Programme commencing in 2014: the sixteen sites proposed in the Tallaght Central and the fourteen sites proposed in the Tallaght South Electoral Areas are shown below.

**Tallaght Central**

<b>Location</b>	<b>Type</b>	<b>Proposed timescale</b>
Beechfield Park, Walkinstown	Local	2014
Belgard Heights	Local	2014
Ambervale	Local	2015
Kilnamanagh Parkhill Rd	Local	2015
Kingswood open space	Local	2016
Tymon Park Limekiln	Neighbourhood	2016
Glendown Park	Local	2016
Ballymount Park	Neighbourhood	2017
Bancroft Park	Neighbourhood	2017
Greenhills Park	Neighbourhood	2017
Tymon Park Willington	Regional	2018
Orwell Park	Local	2018
Perrystown	Local	2018
Kilnamanagh Treepark Rd	Local	2018

**Tallaght South**

Avonbeg	Local	2014
Killinarden Community Centre	Local	2014
Aylesbury	Local	2015
Jobstown Park	Neighbourhood	2015
Kiltipper Park	Regional	2015
McGee Park	Neighbourhood	2016
Seán Walsh Park, Marlfield	Local	2016
Firhouse Park	Local	2016
Old Bawn Park	Neighbourhood	2017
Mount Carmel	Neighbourhood	2017
Carrigwood	Local	2018
Hunterswood	Local	2018
Killinardan Park	Neighbourhood	2018
Dodder Park Road	Local	2018

It is intended to complete this programme within a five year period.

In the Tallaght Central Electoral Area the locations proposed for 2014 are:

- **Beechfield Park**
- **Belgard Heights**

In the Tallaght South Electoral Area the locations proposed for 2014 are:

- **Avonbeg Park**
- **Killinardan Community Centre**

These locations are shown on the maps at the end of this document. The locations were chosen on the basis of

- Need
- Distance from an existing facility
- Site suitability

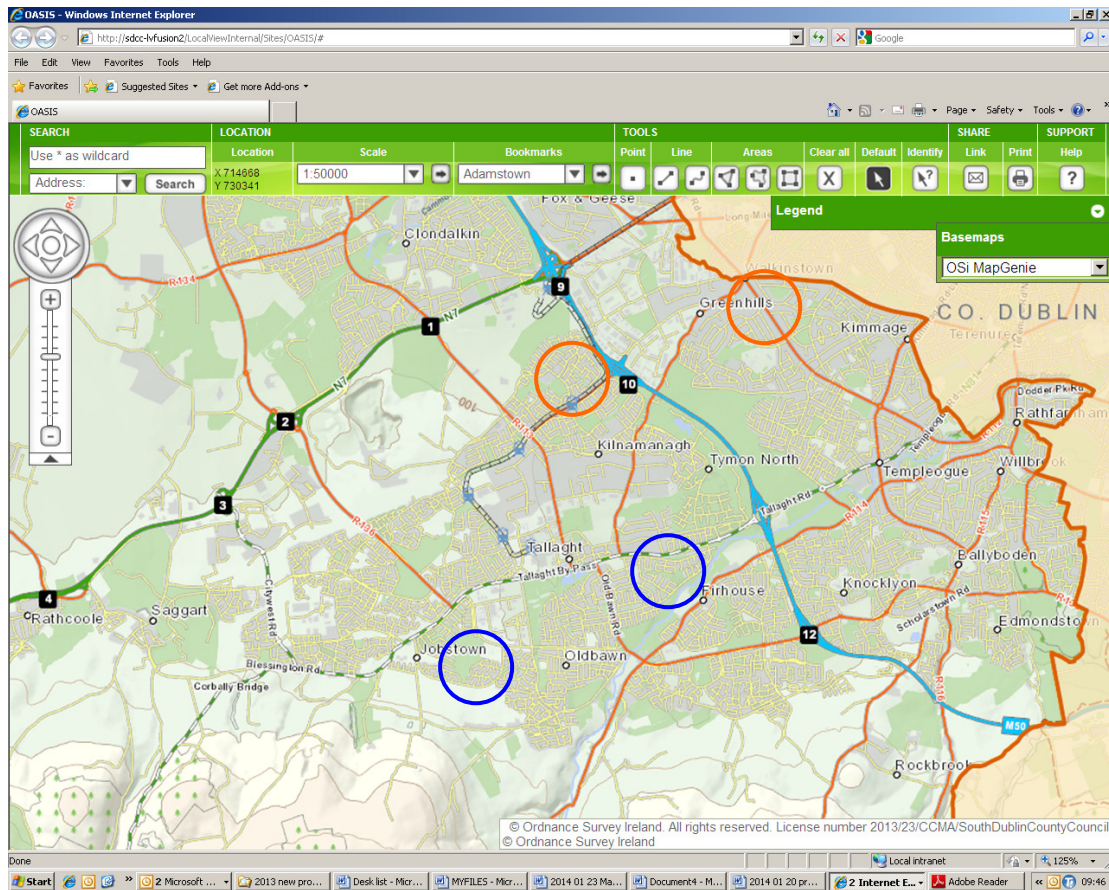
There are 3 categories of Play Space proposed in the Five Year Programme:

- Local
- Neighbourhood
- Regional

The Play Space Programme in 2014 is aimed in particular at local open spaces that can cater for the 0 to 8 age group and that will allow for access by walking from local residential areas. There will be a focus on Natural Play as well as formal play items. Natural Play is facilitated by the provision of items such as boulders, logs, wildflower areas, tree planting and mounding that will stimulate children to create their own play.

It is intended to consult with local organisations concerning the programme including with the local residents groups, Comhairle na nÓg, adjacent community centres and schools. In order to progress the programme it will be necessary to do this consultation in the most efficient way possible and this presentation to the Elected Members is the start of that process.

The proposed locations are shown on the following maps:



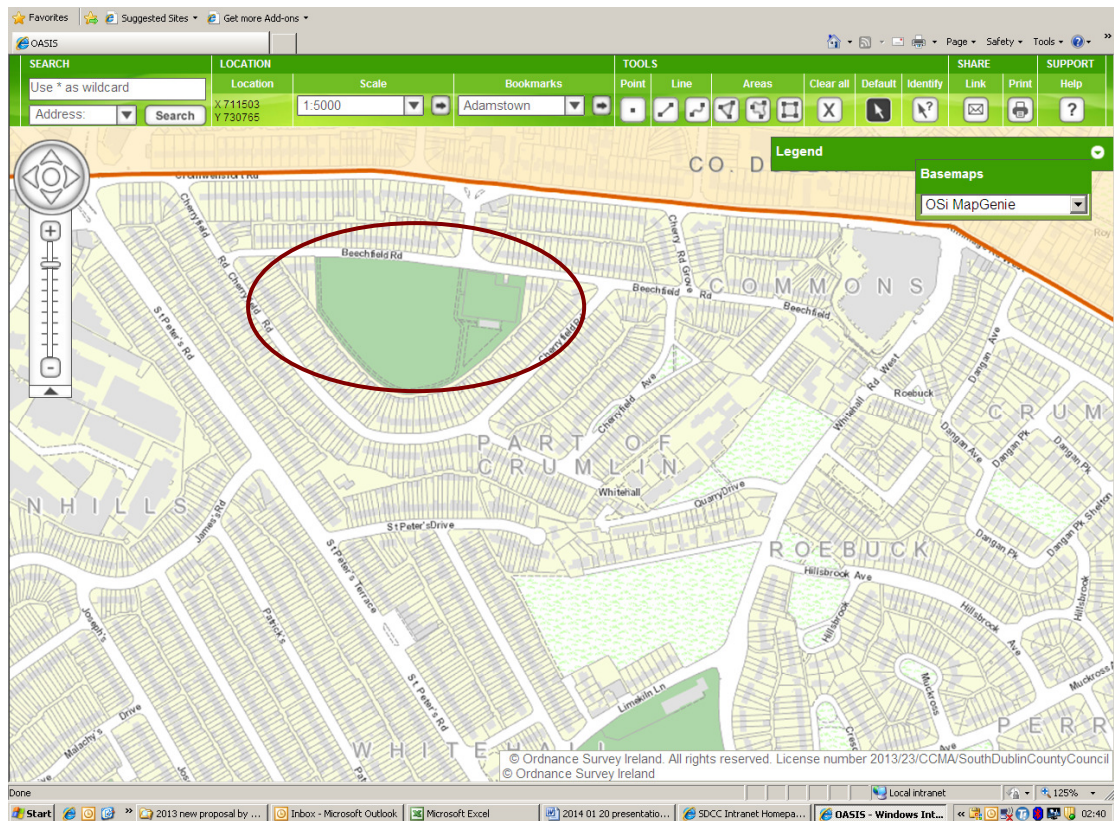
## Proposed Play Spaces in Tallaght Central Electoral Area 2014



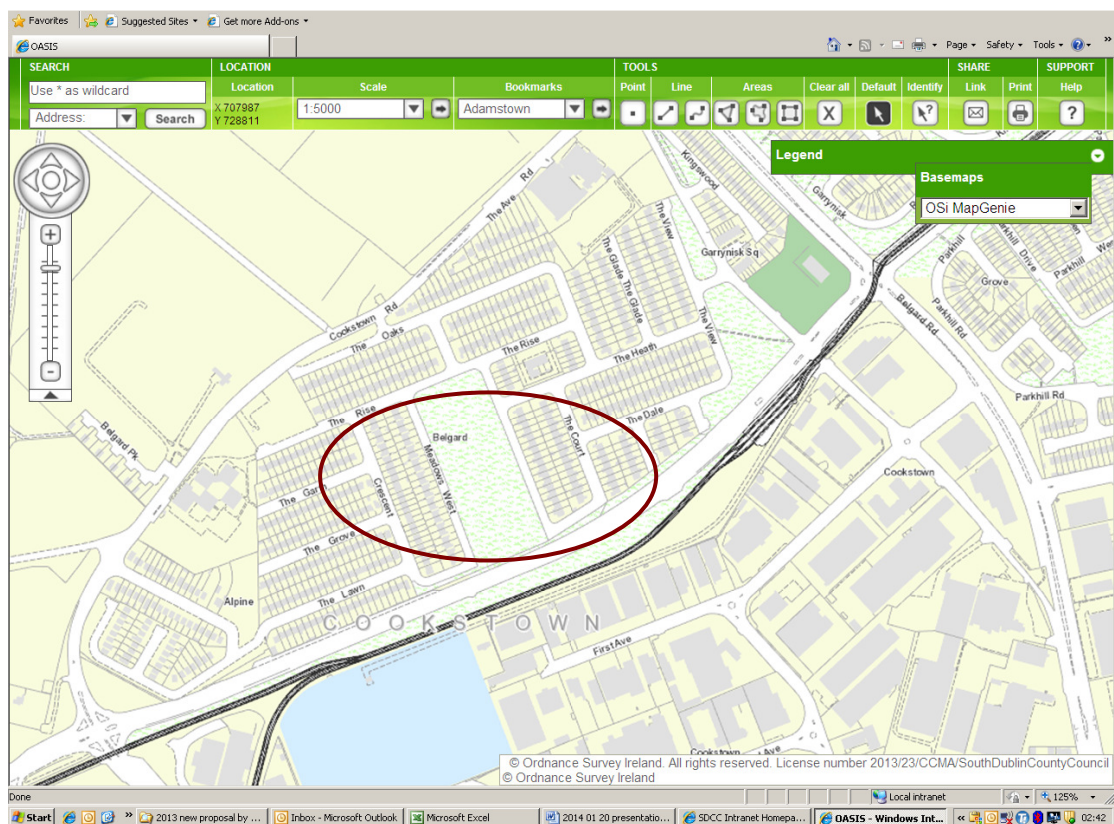
## Proposed Play Spaces in Tallaght South Electoral Area 2014





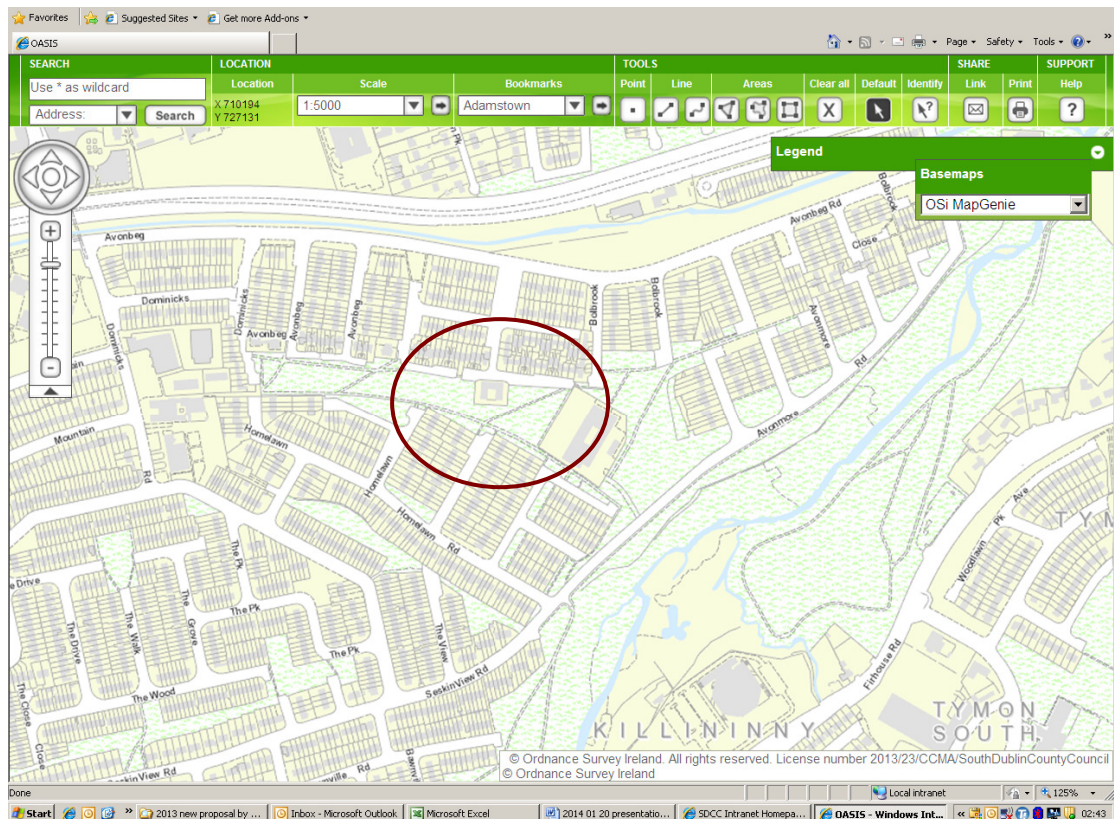


## PROPOSED PLAY SPACE LOCATION BEECHFIELD PARK

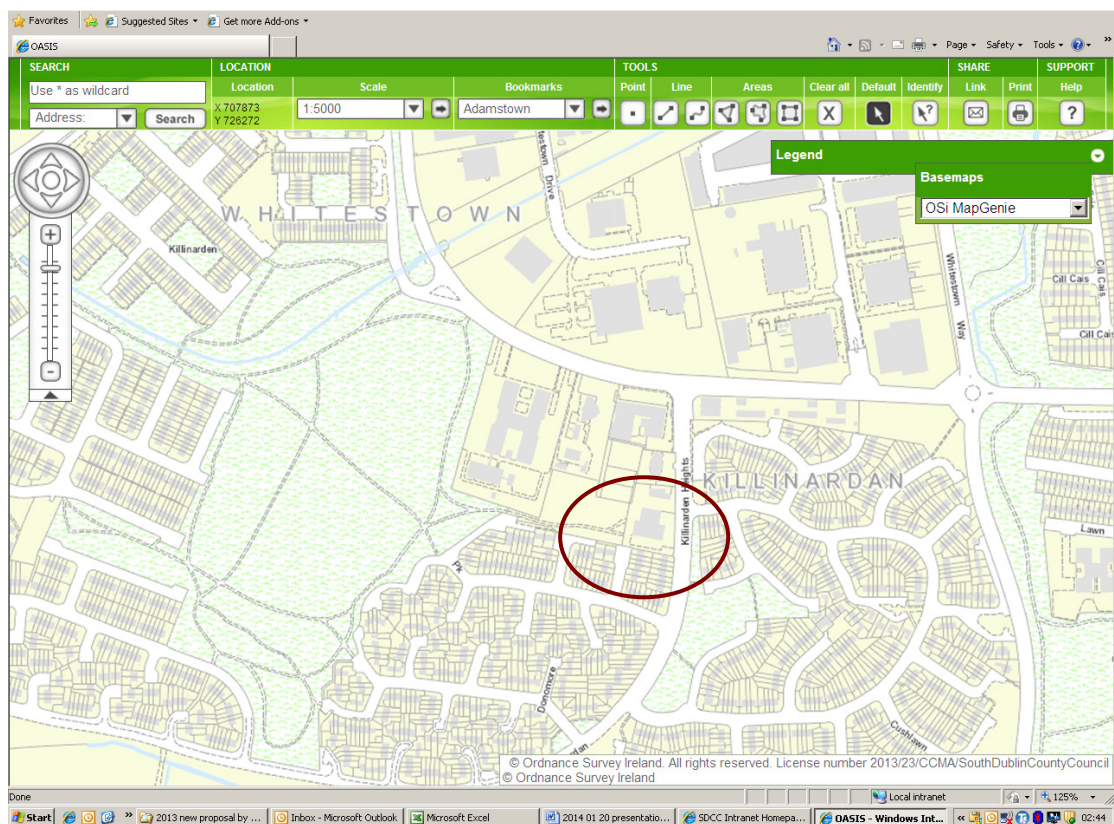


## PROPOSED PLAYSPACE LOCATION BELGARD HEIGHTS





## PROPOSED PLAY SPACE LOCATION AVONBEG



## PROPOSED PLAY SPACE LOCATION KILLINARDAN