

Meeting of Clondalkin Area Committee
Wednesday 15th January 2014
Headed Item No. 17

PROPOSED FIVE YEAR PLAY SPACE PROGRAMME
CLONDALKIN ELECTORAL AREA

A presentation was made to the Corporate Policy Group and the Council in 2013 of the intention of the Council to undertake a Five Year Playground Programme commencing in 2014: the initial thirteen sites proposed in the Clondalkin Electoral Area are shown below.

Location	Type	Proposed timescale
Rathcoole Park	Local	2014
Knockmitten Park	Neighbourhood	2014
Letts Field, Neilstown	Local	2015
Quarryvale Park	Local	2015
Newcastle	Neighbourhood	2015
Ashwood estate	Local	2016
Springbank Cottages Saggart	Local	2016
Collinstown Park	Local	2016
Grand Canal Park	Local	2017
Corkagh Park	Regional	2017
Cherrywood Park	Local	2018
St Cuthberts Park	Local	2018
Corkagh Park	Local	2018

It is intended to complete this programme within a five year period.

In the Clondalkin Electoral Area the locations proposed for 2014 are:

- Rathcoole Park
- Knockmitten Park

These locations are shown on the maps at the end of this document. The two locations were chosen on the basis of

- Need
- Distance from an existing facility
- Site suitability

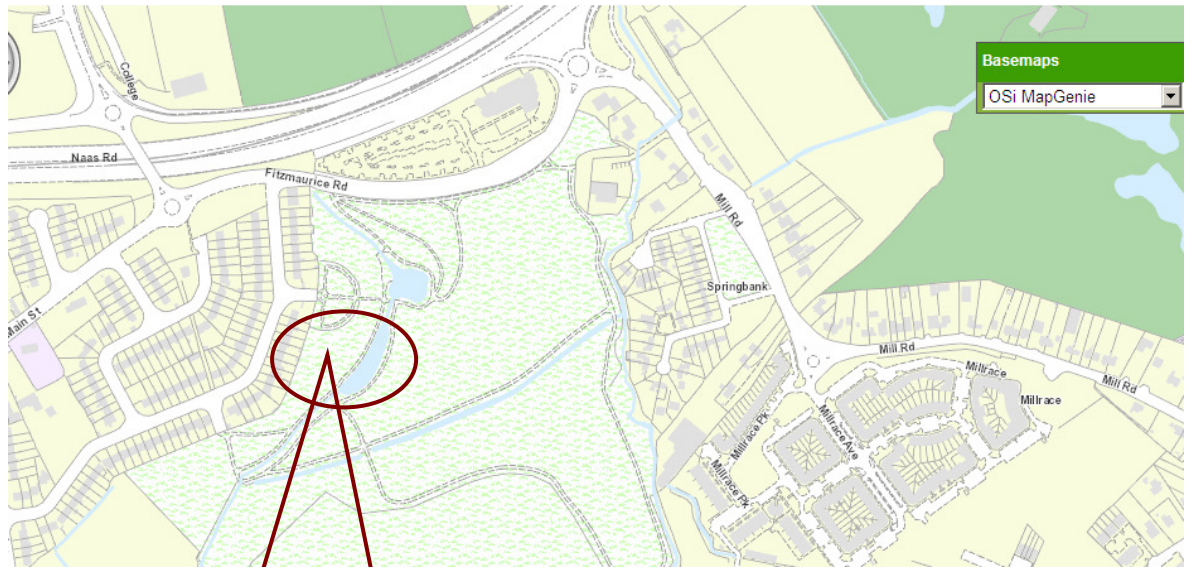
There are 3 categories of Play Space proposed in the Five Year Programme:

- Local
- Neighbourhood
- Regional

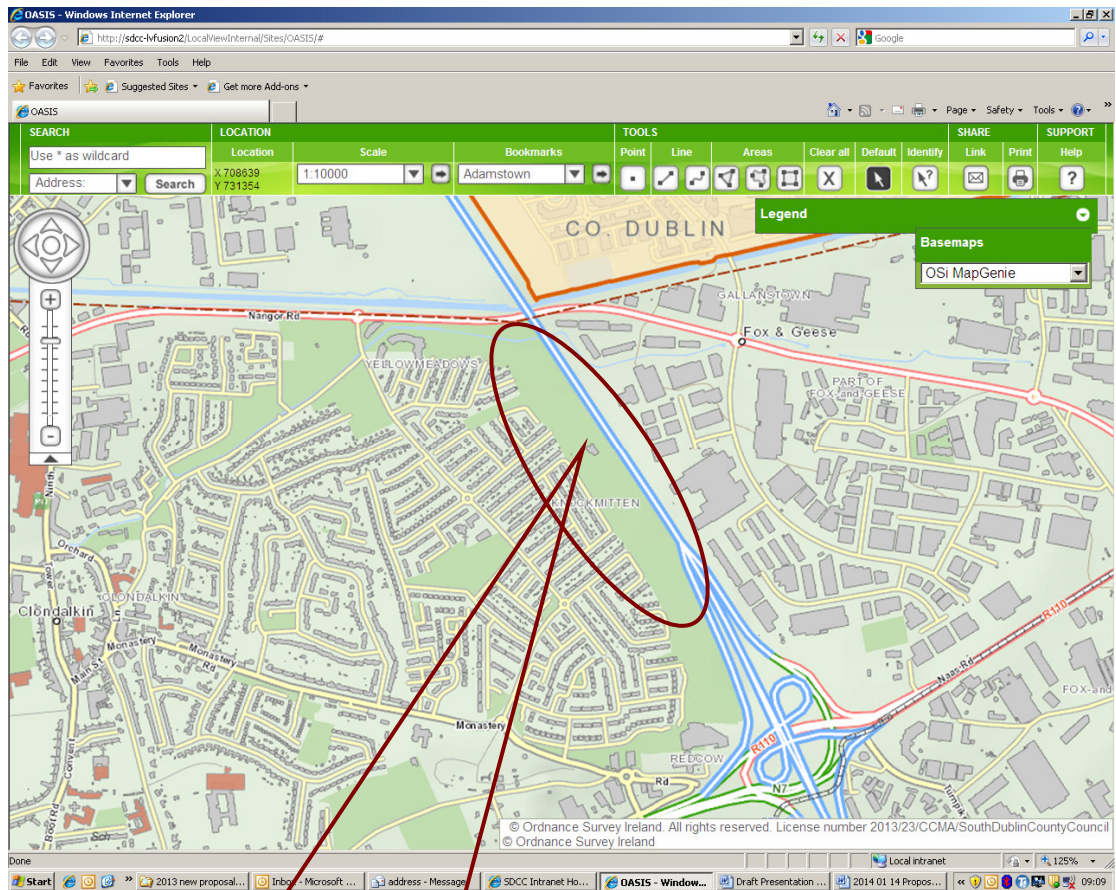
The Play Space Programme in 2014 is aimed in particular at local open spaces that can cater for the 0 to 8 age group and that will allow for access by walking from local residential areas. There will be a focus on Natural Play as well as formal play items. Natural Play is facilitated by the provision of items such as boulders, logs, wildflower areas, tree planting and mounding that will stimulate children to create their own play. In the case of Knockmitten Park the play space will be a Neighbourhood one since this is a large park with an associated Community Centre and the play provision will cater for both the 0 to 8 age group as well as the 8 to 12 age group.

It is intended to consult with local organisations concerning the programme including with the local residents groups, Comhairle na nÓg, adjacent community centres and schools. In order to progress the programme it will be necessary to do this consultation in the most efficient way possible and this presentation to the Elected Members is the start of that process.

The proposed locations are shown on the following maps:



Proposed Play Space at Rathcoole Park



Proposed Play space at Knockmitten Park