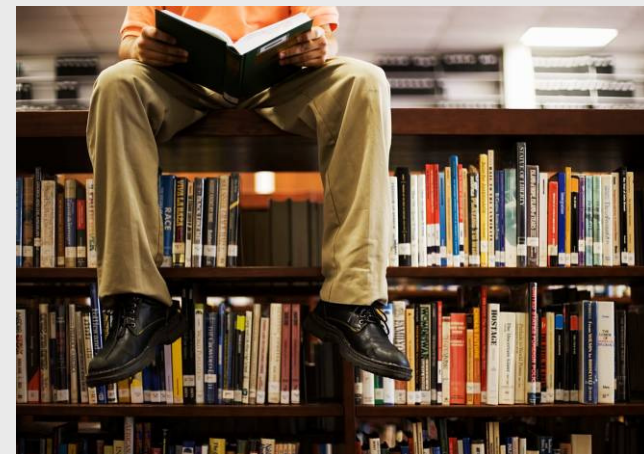


## NORTH CLONDALKIN LIBRARY





AT THE HEART OF THIS SUBMISSION IS A VISION TO MAKE LIFE BETTER FOR THE COMMUNITIES OF NORTH CLONDALKIN IN A CREATIVE AND SUSTAINABLE WAY BY CREATING A 21ST CENTURY LIBRARY SERVICE THAT IS WELCOMING, INCLUSIVE AND EFFECTIVE.

### **Process 2012-2013**

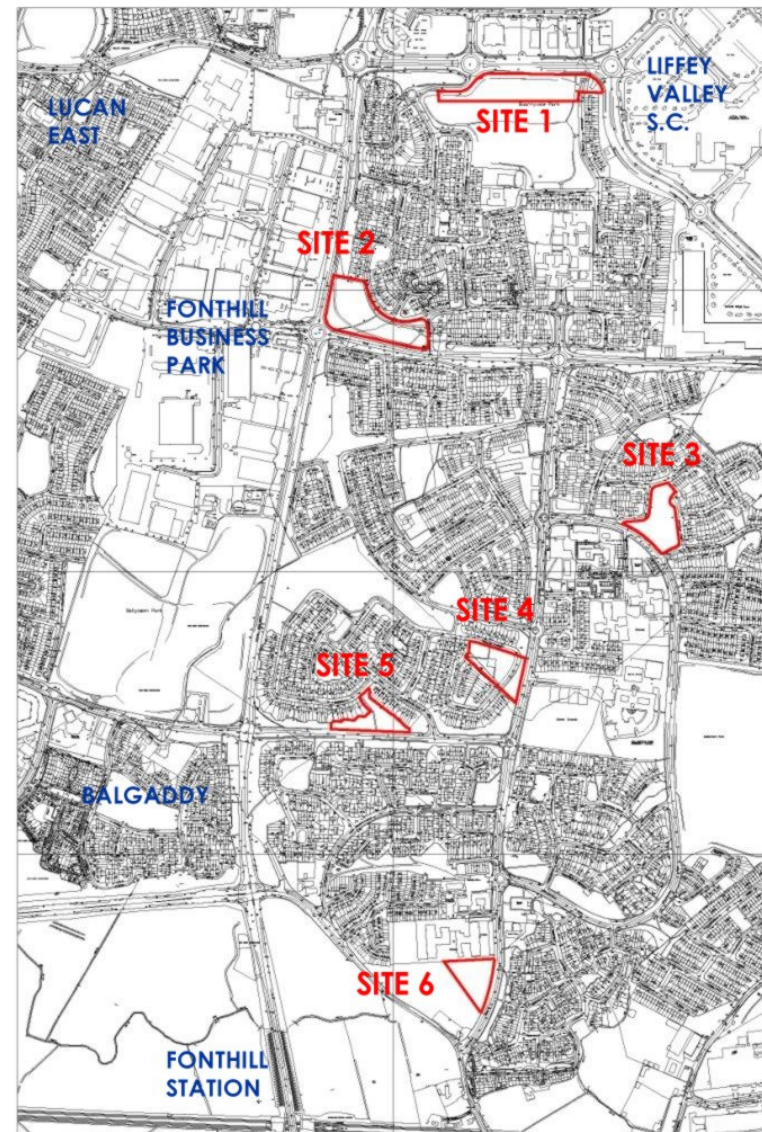
The design of the new library facility for North Clondalkin has developed since the project was first initiated in 2012.

- **Selection of Site**
- **Formation of brief**
- **Draft design and report for funding submission 2012**
- **Further development of brief and design 2013**

## Selection of Site

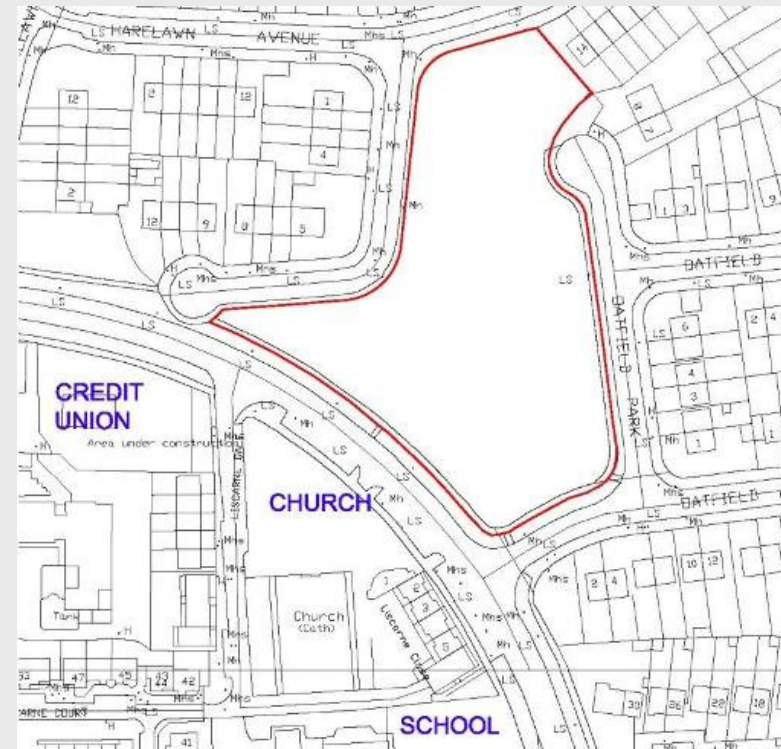
6 potential sites were identified within the North Clondalkin area between the boundaries of:

- To the North
  - Liffey Valley S.C.
- To the South
  - Railway line
- To the West
  - Fonthill Road
- To the East
  - The M50



## Selected Site – Harelawn/Rowlagh

- Pedestrian accessibility
- Vehicular accessibility
- Existing utilities
- Existing community facilities
- Primary & Secondary Schools
- Centrally located within North Clondalkin



## Benefits of Site

- within an established village area with complementary facilities including:
  - a community centre,
  - local shopping centre,
  - primary and secondary schools,
  - church, etc.
- Public utilities serve site but do not constrain the site
- An extent of the open green space is retained as open space for the benefit of the surrounding dwellings



## Spaces for Learning

### Private study

- Many schoolchildren in this area may not have access to quiet study space at home and/or
- Access to books and other information sources

### Group/Collaborative work

- Spaces within the library which encourage collaborative work
- dynamic usage of the library in contrast with the quiet library tradition



## **Spaces for Learning**

### **I.T.**

**Computers form an important part of any modern library, providing access to:**

- information,**
- training,**
- entertainment,**
- communication.**

- Informal training through cd/dvd media and online/distance learning,**
- Formal training for local residents in I.T. skills**



## Spaces for Quiet

The need for quiet in today's world is an imperative. Within this new library and adjacent to the children's space, will be a **living room** place for parents and children to read, relax and play.

A reading space for adults will also be available cocooned from the busy elements of daily library activity



## Spaces for Meeting

### Small Groups

- Enclosed formal group spaces
  - Semi-enclosed meeting spaces within Library hall
  - Informal group work zones within library hall
- language classes
  - bookclubs
  - local history



## Spaces for Meeting

### Larger Groups

-Enclosed formal space

-Flexible Layout

- Larger classes/training
- Art/Craft Workshops
- Seminars
- Events



## **A Children's Space**

- Flexible Layout
  - Creative Play
  - Story-telling
  - Outdoor spaces
  - The 5 senses
- 
- Activity Wall
  - Collaborative space
  - Garden/Playground
  - Variety of environments



## **Spaces for Employment and Business Support**

- employment and career information
- assistance with online job applications
- skills training
- free public Internet and computing access
- long opening hours
- Free WiFi facilities
- collections of business books, magazines and newspapers
- Enterprise support and start up guidance will also be offered



## Nature of Space

- Visibility
- Legibility
- Navigation
- Low book shelves and fittings
- Translucent screens allow for the semi enclosure of areas for a feeling of privacy
- High ceilings at different levels to accentuate the quality of the open space in the main hall
- Glazed screens to the enclosed spaces to maximise light and visibility



## Nature of Space

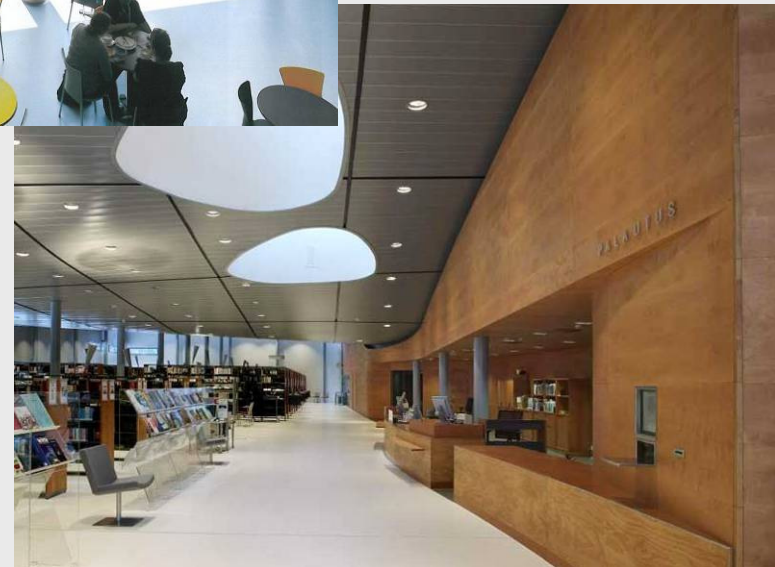
- Permeability
- Flexibility
- Environment
- Library gardens/playgrounds within perimeter of footprint
- Library spaces open up into these 'external room'
- Indoor/outdoor activities



## **The Library Building Design**

**-Expansive Sight lines within main library hall with spaces demarcated using**

- **low level furniture and**
  - **changes in ceiling material/pattern/level**
- Staff areas on 1F**
- **Glazed enclosure allowing visibility from staff offices and break-room**
  - **Storage and Plant kept to 1F and roof levels to maximise usable space on Ground Floor**

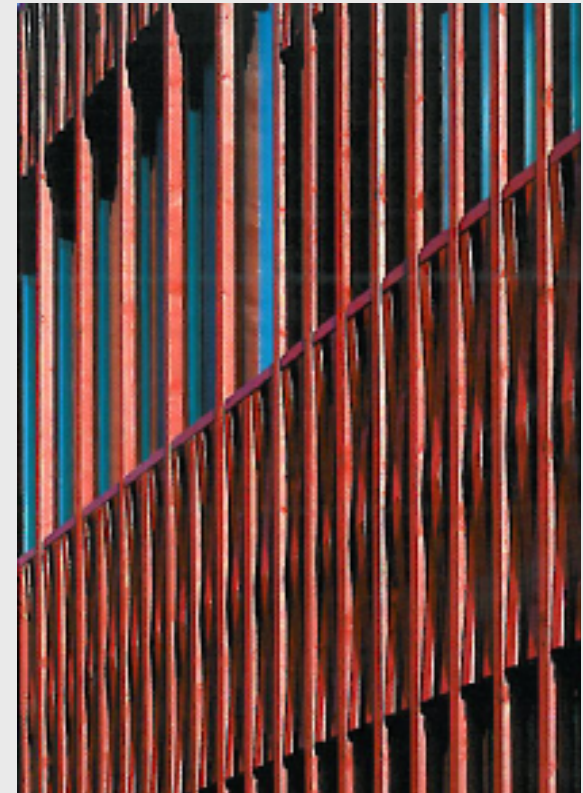


## **The Library Building Design**

- Sight lines from library hall to library gardens and public plaza
- Use of glazing and screening to allow a level of visibility and light between the library building and its surroundings
- The building opens out into the green space it inhabits and engages with the neighbourhood

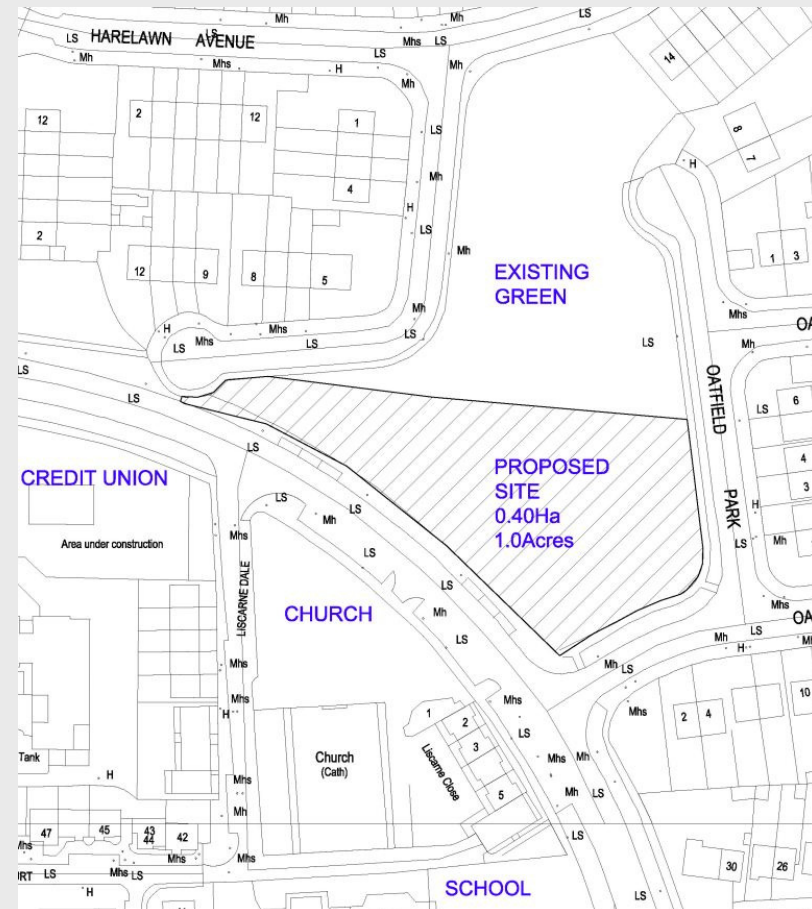


## The Library Building Design



## The Library Building Design

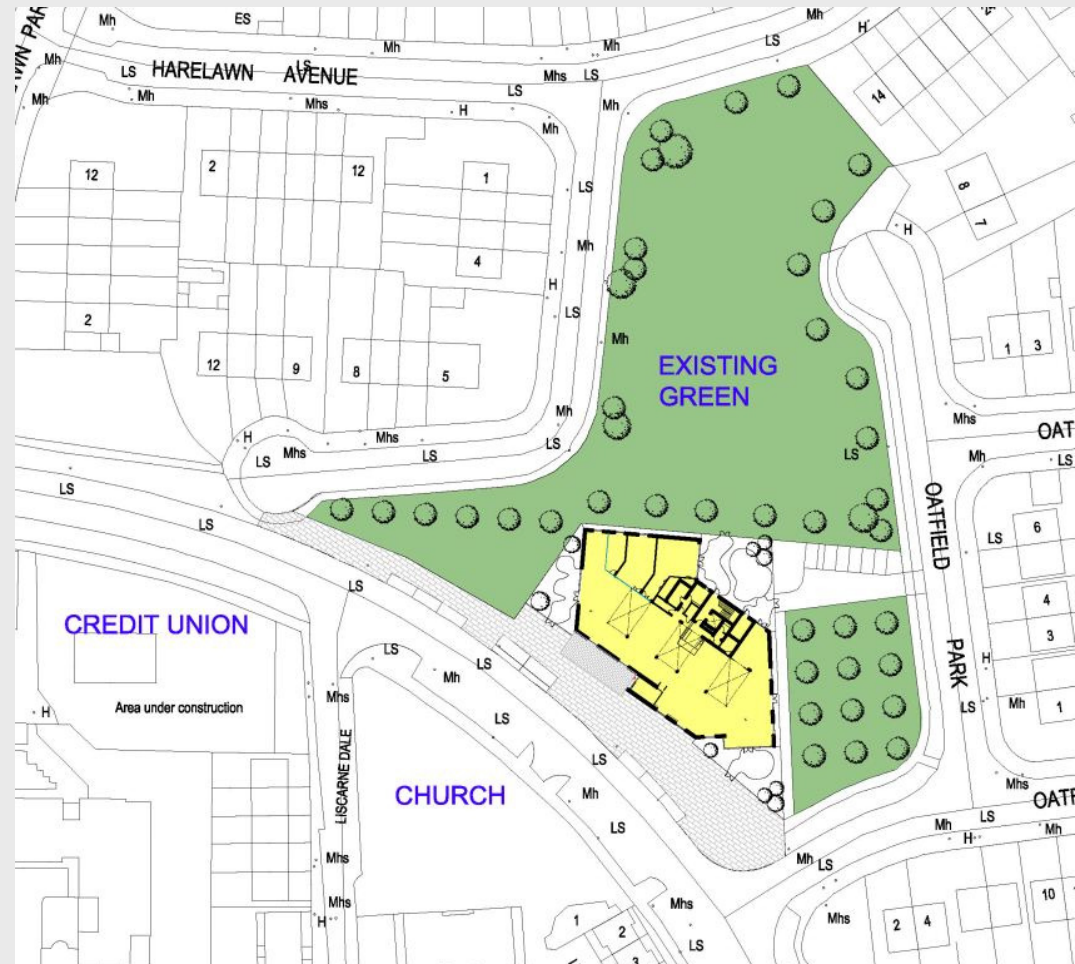
### Proposed Site



## The Library Building Design

### Proposed Site Layout

- Staff parking to rear of building
- Up-graded On-street parking, including accessible parking spaces provided on main street
- Hard-landscaped space to front of building with additional planting/landscape to sides



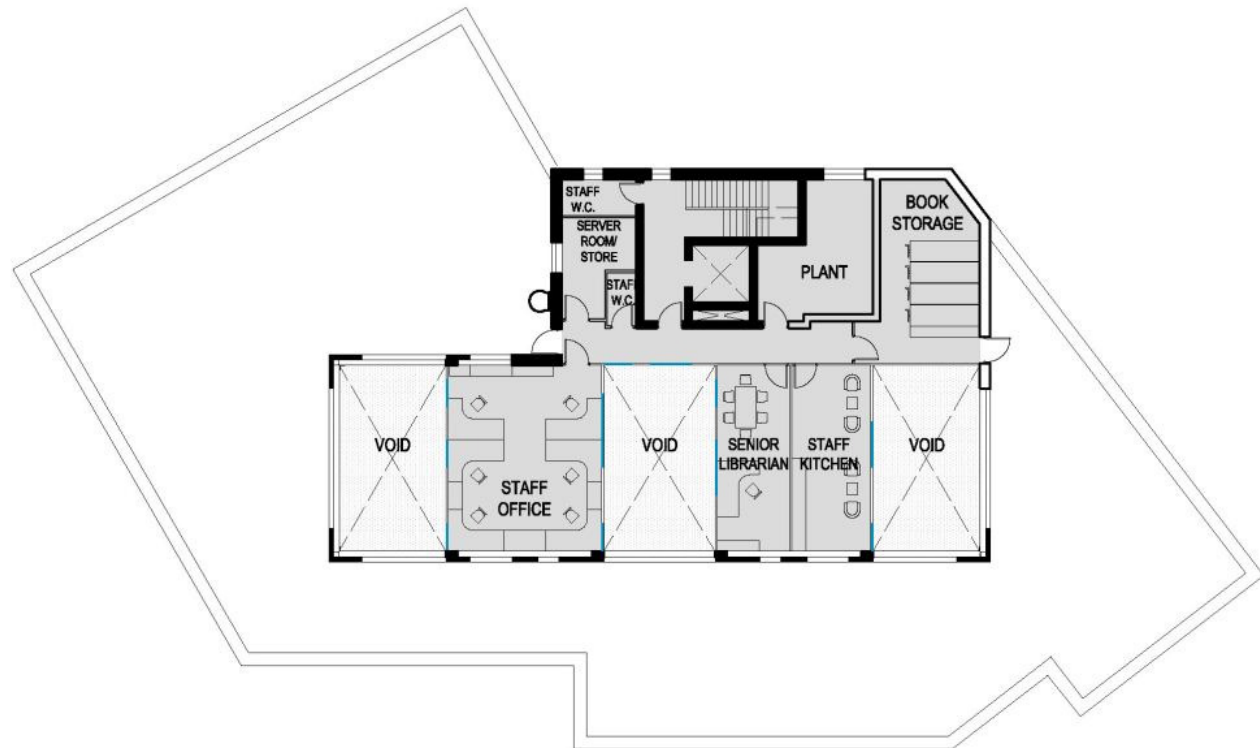
# The Library Building Design

## Ground Floor Plan



## The Library Building Design

### First Floor Plan



## The Library Building Design

### 3D MODEL – External Views

- Approach entrance via a public plaza
- Maximise natural ventilation and natural light at 1F level



## The Library Building Design

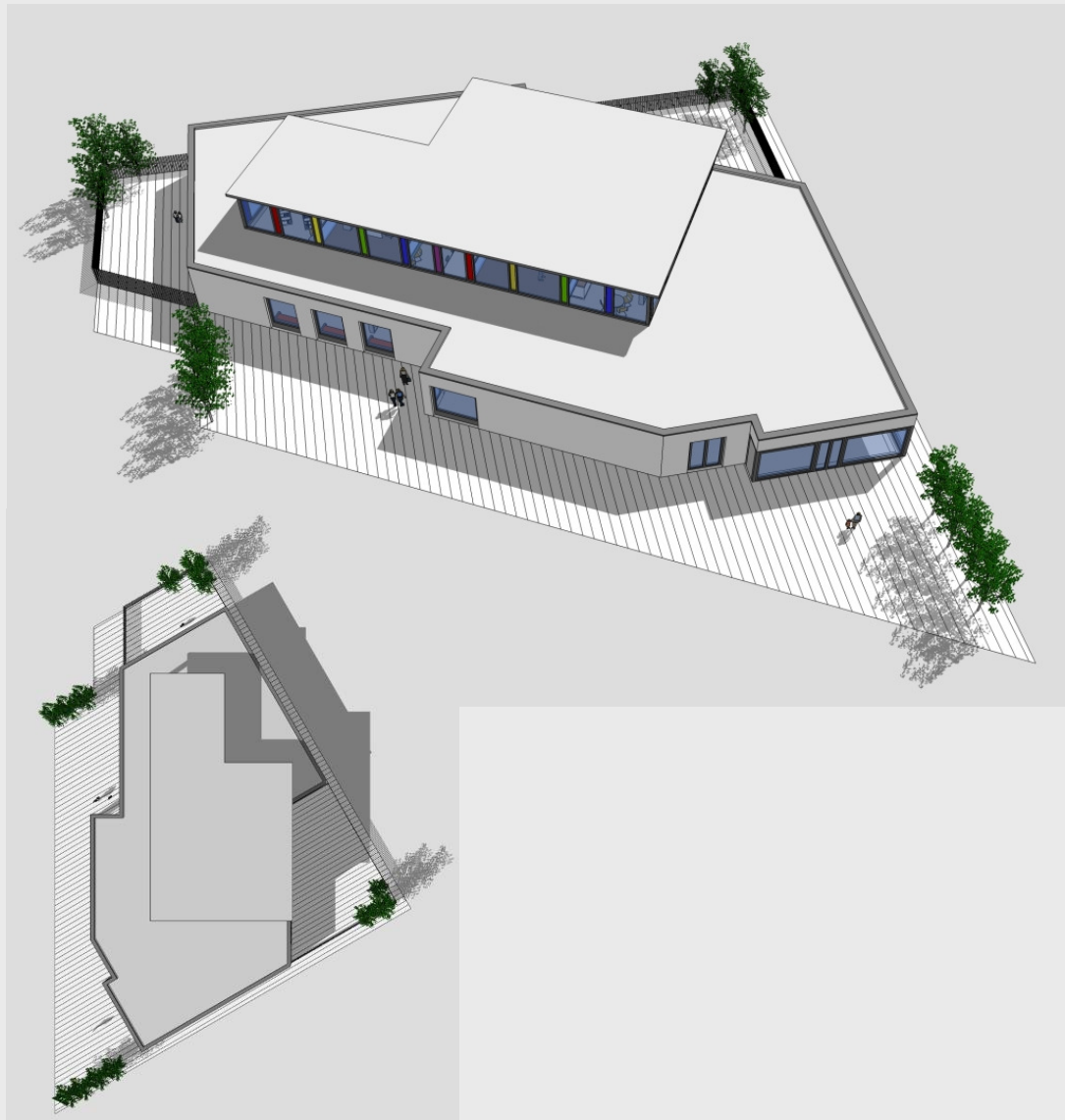
### 3D MODEL – Library Gardens

- Enclosed Gardens
- External Rooms
- Playspaces



## The Library Building Design

### 3D MODEL – Aerial View



## **The Library Building Design**

### **3D MODEL – Cut- away Views**

**Voids from main  
library up into  
clear-storey at 1F  
level providing**

**-views from office  
into library**

**- light and air to  
library below**



## **The Library Building Design**

### **3D MODEL – Interiors**

**Voids from main  
library up into  
clear-storey at 1F  
level providing**

**-views from office  
into library**

**- light and air to  
library below**

