

2012



**South Dublin Arts Centre
Arts Programme 2012**

2012

Organisation Information

Vision

RUA RED's vision is to create the model of tomorrow's international arts and learning centre. We will work together to offer world-class arts which inspire, challenge and amaze.

Mission

RUA RED promotes the development and exhibition of art and culture through providing opportunities for artists to create, and for audiences to engage with an active, varied and high-quality cultural life for the people of South Dublin, Ireland and beyond.

RUA RED is a cross-artform producer, sharing, developing and showcasing exemplary ideas and supporting remarkable talent. It is a space for cultural exchange which promotes engagement, enjoyment, diversity and participation in a gallery programme across artforms. It is possible to experience visual art in such close and creative relationships with music, dance, performance, opera, film and the spoken word.

Core values

Bold, Open, Meaningful, Magical, Entrepreneurial

Our aim is to:

- transform lives
- excite a new generation
- offer great experiences to all



2012

Strategic Priorities

We will do this by:

Creating and developing an arts programme that is recognized as a model of excellence.

We will bring world-class national and international artists to the Centre, commission distinctive new work, and nurture artists. We will present innovative programming and offer great experiences for our many diverse audiences.

Ensuring creative learning for all underpins every aspect of our arts programme.

We will shape inspiring approaches to engagement with the arts, involving people of all ages across all styles and genres. We will reach out to new audiences and demonstrate the power creative learning has to add value to our experience of all the arts.

Developing international, local and national partnerships beyond our walls.

We will build strong and sustainable collaborations and partnerships with a range of outstanding associate artists and companies, funders and donors. We will reach out beyond our walls to work with local partners within communities across South Dublin and beyond.

Embracing new technologies and the digital agenda.

We will harness new technologies as an integral part of our arts events, enabling unrivalled access to our work and increasing our impact and profile. Our website will introduce audiences to the new, encourage them to cross artistic boundaries, and make their experience of RUA RED richer.

Making the most of our exemplary building and superb spaces.

We will develop imaginative ways to welcome people to the commercial and arts activity of RUA RED, enlivening our café foyer and making it a place to feel at home. We will earn income and make the most of our great spaces, establishing a new benchmark of sustainability and develop the organisation in line with business needs and our brand values.



Programme Policy

During 2011 South Dublin Arts Centre Company took the opportunity to re-define the arts programming policy & strategy.

The future programme in 2012 - 2014 will focus on the achievements of leading artists of the 20th and 21st centuries through the presentation of a broad spectrum of national and international visual arts.

In tune with RUA RED's belief in supporting a gallery programme across artforms, it is possible to experience visual art in such close and creative relationships with music, dance, performance, opera, film and the spoken word.

From 2012 RUA RED will provide a platform for exciting and inspiring cutting edge programme of contemporary visual art by developing a responsive, open source approach to programming. This means we will be the sole producer of a holistic gallery programme with two methods of approach, firstly by self-generating in-house curatorial ideas by the exhibition team and secondly, by managing a small number of like-minded collaborative partners and individuals who are working within the same interests of the centre .

The arts programme will be conceived a minimum of 18 months in advance. At the heart of all our plans remains the desire to have a cohesive, visual art programme of quality and merit presented to the widest possible audience.



2012

Annual Policy Developments

RUA RED will:

Curate, produce and manage a minimum of six major exhibitions a year, showing a wide range of Irish and international visual art contemporaries

Develop it's reputation for presenting world class, experimental new media work

Offer entrance to our exhibitions for free

Offer a programme of research and production residencies to support the development of new work for our programme

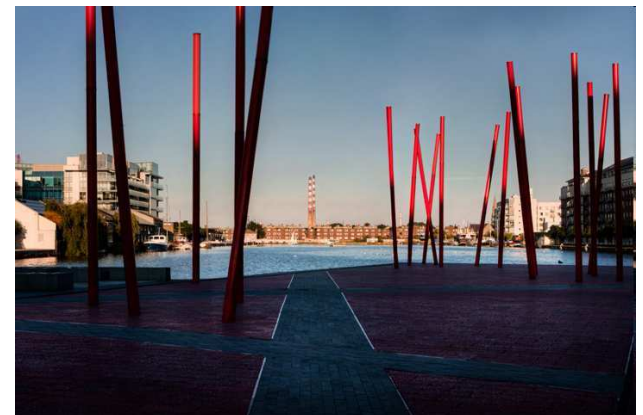
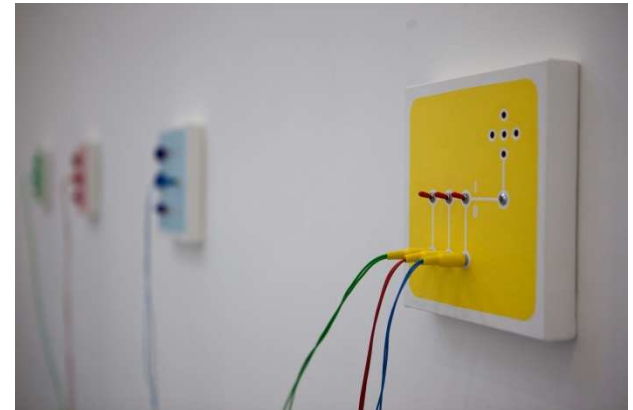
Develop the experience of visual culture in close and creative relationships with other art-forms including music, dance, performance, opera, film and the spoken word

Produce an annual digital arts festival 'GLITCH'

Develop a focus on film as part of the gallery programme and the best of independent, arthouse and foreign films in a series of special seasons, unique previews, archive features and screen talks

Ensure to embrace new technology whether forming an intrinsic element of an exhibition or event, communicating through social networks or sharing an experience RUA RED will continue to use technology to engage with its audiences in new ways

Develop a Creative Learning programme that underpins every aspect of our arts programme



2012

Gallery Programme

| GALLERY 1 | | | GALLERY 2 | | |
|--------------------------|----------------------------------|---|--------------------------|-------------------------------|--|
| Date | Exhibition | Artists | Date | Exhibition | Artists |
| 17 March – 28 April | <i>Three Lives</i> | Brian Duggan | 17 March – 28 April | With & without a lens | Jessica Kennedy, Junk Ensemble |
| 19 May – 16 June | <i>Experimenting with Clouds</i> | Alan Butler, Joanne Kane, Jacob Kiregaard, David McAllister, Conor McGarrigle, Jer Thorp & Niamh O'Malley (Part of the GLITCH Festival) | 19 May – 16 June | Experimenting with clouds | Chris O'Shea (Part of the GLITCH Festival) |
| 30 June – 4 August | Title tbc | Adam Patterson (Part of Photo Ireland Festival) | 30 June – 4 August | <i>Of all places</i> | Ireland Funds Participate Programme |
| 18 August – 29 September | <i>The Modelled Conscious</i> | Barbara Knezevic & Magnhild Opdøl, | 18 August – 29 September | <i>The Modelled Conscious</i> | Seamus McCormack |
| 13 October – 24 November | <i>Dot Universe</i> | Anne Cleary & Denis Connolly | 13 October – 24 November | <i>Dot Universe</i> | Anne Cleary & Denis Connolly |
| 1 – 22 December | Winter Open Show | Open selection approx. 30 artists | 1 – 22 December | Winter Open Show | Open selection approx. 30 artists |

2012

Exhibitions

Three Lives

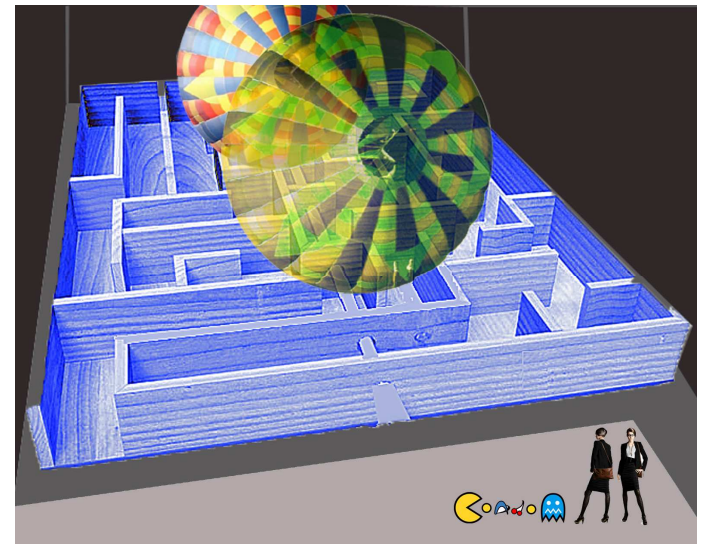
Brian Duggan

17 March – 28 April

About the exhibition

Three lives will be a installation in Gallery 1. The piece conceived as a hybrid form will take reference from a number of early arcade games, classical gaming, and cultural history. The central structure will be a 44 foot square maze on different levels which visitors must enter to see the exhibition. Above this will be a replica inflated Graf Zeppelin which will contain texts and images. The Gallery will be blacked out, but will be strategically lit with various green lights and also some projections and audio soundscapes. Conceived as a new installation based on a hybrid format of influences, amalgamated into a newly created yet unrealised and unreleased arcade game. At the end of traditional computer games, when the players three lives are up, a promised land of the next level is briefly glimpsed before fading away. The exhibition will develop this unexplored space, this tantalising new level.

Dissecting the volume of the unique gallery, this new work will continue the artist's investigation into some central questions that underpin his practice in the past number of years. Dugan's practice is always about asking questions, and what do you find if you ask different ones. Disorientation is a place where he finds results, and being lost is a place to find things. With source material from the Graf Zeppelin's Round-the-World flight, and the tragic 1937 landing in Lakehurst, 80s cinema, and early gaming technology. The resulting exhibition will bring the viewer on a new journey through new unstable pathways of entanglements and interdependent concerns.



2012

Exhibitions

With & without a lens
(Part of RUA RED Dance Residency)

Jessica Kennedy from JUNK ENSEMBLE
17 March – 28 April

Jessica joins RUA RED during 2012 as our dance artist in residence supported by the Arts Council. The Dance Residency *Movements with and without a lens* will bring together dance artist Jessica Kennedy and filmmaker John McIllduff to collaborate on work that explores the vacant and forgotten sites in Tallaght specifically considering movement in relation to the environment and movement influenced by a physical context, which will include the Parkour discipline and sign language. The residency will research and produce two new pieces of work, a dance film and a live dance performance.

About the exhibition

As an introductory to the residency and Jessica's work an exhibition of her previous dance films will be shown in Gallery 2.



2012

Exhibitions

Experimenting with Clouds (Part of the GLITCH Festival)

Alan Butler, Joanne Kane, Jacob Kiregaard, David McAllister, Conor McGarrigle, Jer Thorp & Niamh O'Malley, Chris O'Shea
19 May – 16 June

/Glitch

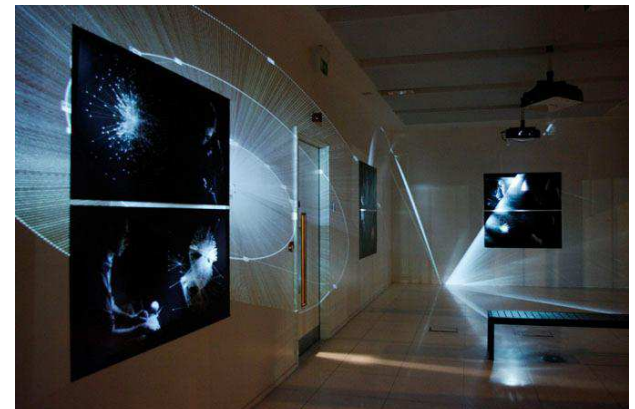
About GLITCH

GLITCH at RUA RED is an annual festival that brings together Ireland and Europe's leading media and technology artists, theorists, researchers, curators, artist groups with audiences to explore emerging and established contemporary cultural and critical issues that arise from artists intersection and investigations with digital technology.

About the exhibition

The theme of the main exhibition will explore artists who conspicuously use virtual and real spaces to explore new media artwork. *Experimenting with clouds* comprises of an exhibition devoted to exploring the history, social impact and future of open source technologies. This exhibition celebrates the open source culture of sharing and collaboration, while examining the virtual and real spaces artists occupy within the realms of new media and technology.

The exhibition will include new work from the IMMA collection.



2012

Exhibitions

*Title to be confirmed
(Part of the Photo Ireland Festival)*

Adam Patterson
30 June – 4 August

About Photolreland Festival

Photolreland is a Dublin based organisation dedicated to stimulate dialogue around Photography in Ireland. In 2010, we developed Ireland's first international festival of Photography and Image Culture.

About the exhibition

Adam Patterson is the lead artist for our Participate Programme in 2012 funded by the Ireland Funds. The programme main aim is to enrich lives through the arts for the community of Tallaght West whilst developing the capacity of our learning activities and building a strong relationship between the centre and our broad local community. The project will offer local residents and an artist the opportunity to explore issues of identity, territory and neighbourhood through a variety of artist-led classes and workshops resulting in two exhibitions during the Photolreland Festival, a solo show by artist Adam Patterson in Gallery 1 and an exhibition of local residents work in Gallery 2.



2012

Exhibitions

The Modelled Conscious (Part 1 of the Ambiguities & Singularities Project)

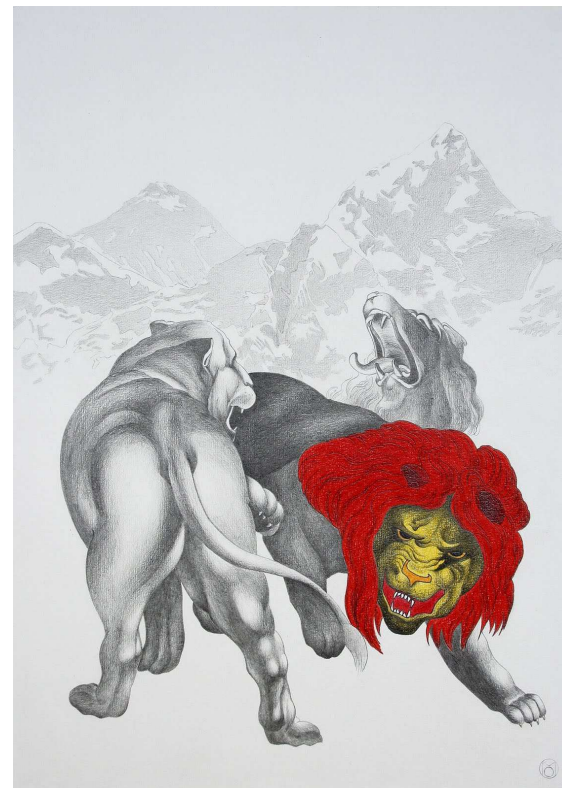
Barbara Knezevic, Magnhild Opdøl & Seamus McCormack
18 August – 29 September

About Ambiguities & Singularities Project

Scientists and artists increasingly engage each other's work. RUA RED are proposing a project that analyses that engagement, highlighting the challenge of materials, the fascination of scientific paradigms, the artist's ability to assist with scientific investigation, and the need to explore the political and ethical consequences of science. As part of the Dublin City of Science celebrations in 2012, RUA RED wishes to collaborate with 8 artists, and scientists from The Adelaide and Meath Hospital, Dublin, Laboratoire Psychologie de la Perception at Universit Paris Descartes and the CLARITY Centre, to develop a project called '*Ambiguities and singularities*' which will create a three-part exhibition series for the galleries at RUA RED. The inspirational statement for the project focuses on the 'Rediscovery of wonder' creating new original work that explores biological networks within the context of cognitive, perceptual and plasticity areas of science.

About the exhibition

Artists today are using the perception format- the projected image, theatricality, segmentation and process, to access the consciousness of the viewer. The work of Barbara Knezevic, Magnhild Opdøl and Seamus McCormack all allow for a temporalisation of process and a complexity of senses; much in the manner of the biological perception-image. In doing-so they allow for the space wherein conscious awareness can thrive. Many of the works have a projected image – instigating mechanism and the acknowledgement of it, the work of art, in other words, becomes visible as production (Fisher, 1993).
the exhibition.



2012

Exhibitions

The Dot Universe (Part 2 of the *Ambiguities & Singularities Project*)

Anne Cleary & Denis Connolly
13 October – 24 November

About the exhibition

The Dot Universe is a site specific, participative project developed by artists Anne Cleary & Denis Connolly for Gallery 1. The project is the culmination of research the artists have been engaged in with several scientists over the last year. A synthesis of new technologies, perceptual science, and conceptual art ideas, the Dot Universe starts with a simple idea which nevertheless has complex and universal possibilities. Our world is made up of dots, from the tiniest particle spinning in the nucleus of an atom, to giant heavenly bodies, perceived by us as glimmering points of light, we are surrounded by an ever expanding universe of dots.

Scientists have always been fascinated by what we call biological movements, how our eyes interpret clues from moving bodies to join the dots—to give us a full picture of what we are seeing. Artists too, are fascinated by movement and connections—putting signs together to communicate a message; and who has never looked at the stars and seen pictures there? Pre-modern civilisations interpreted the configurations of the stars as biomorphic (and often human) forms. From China, through India, Mesopotamia, Greece and Central America, all the scholars who looked at the stars found human forms there. And stories too: battles, scenes, love affairs...



2012

Exhibitions

Annual Winter Open Show

Various Artists
1 – 22 December

About the exhibition

RUA RED is pleased to present the 2nd Winter Open Show in Gallery 1 & 2. The exhibition will feature a cross section of emerging and established artists and craft makers presenting painting, printmaking, sculpture, photography, installation, jewellery, mixed media work, craft and applied artwork. All works will be for sale. All works submitted for exhibition are considered by a selection panel including a guest curator.



2012

Production Residency

Production residencies are aimed at contemporary visual artists, who are working nationally and/or internationally for whom a change of scenery might offer fresh inspiration; offering the artist/s a dedicated studio and access to all Artists Facilities and Artists Support Programmes with a view to realising a major project or body of work that is disseminated as part of the Annual Exhibition Programme.

The Production Residencies vary in duration from three months to a year offer a rare opportunity for dialogue and exchange between the resident artist and the RUA RED community and artists who are at different stages of their career.

Production residencies offered in 2012 to visual artists Molly O'Dwyer, Seamus McCormack, Anne Cleary & Denis Connolly.



Research Residency

Research residencies support an artist, writer, scholar, academic, curator or researcher working nationally and/or internationally, to support existing projects and the development of new ideas over a sustained period of time. This residency format is key to RUA RED's commitment to enabling the dissemination of contemporary visual arts practices and creative exchanges between visiting resident practitioners and in-house artists as well as the public.

Research residencies offered in 2012 to Hilary Murray, Curator, Irish Museum of Modern Art and artist Fiona Marron.



2012

Dance Residency

The Dance Residency is aimed at supporting an artist's professional development whilst providing opportunity to access facilities, in order to develop their work & share their practice. 2012's dance residency was awarded to Jessica Kennedy who will produce a dance film & new choreographic work.

Delivery of the residency

Movements with and without a lens will be led by Irish based dance artist Jessica Kennedy and produced by John McIlduff. The participating dance artists are Liv O'Donohoe and Eddie Kay. The process will encourage the artists to challenge their methodology and to choreograph and create work that is showcased in new territories. Jessica will encourage the participating artists and community to push beyond their comfort zones to create work that opens doors, changes minds and inspires new work and collaborations.

Movements with and without a lens will have three phases of development, the first phase will be research and development for the residency, the second phase a dance film and the third phase a professional dance production. All the parts are intrinsically linked by theme, setting and creative team. For both parts of the project, members of the South Dublin County community will be invited to audition/ participate in the film and the production. The end product will instill a sense of ownership of the creation within the community through their active participation.



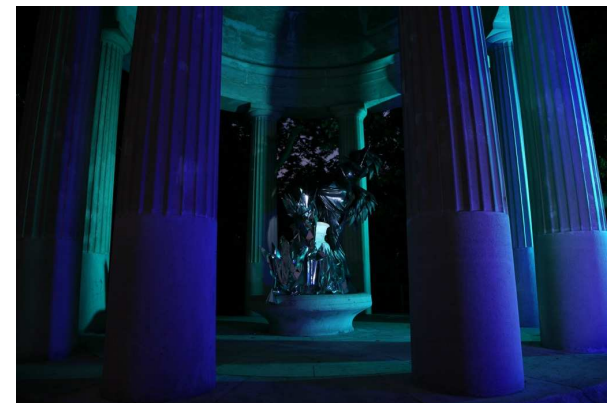
2012

Workspace Developments

RUA RED wishes to continue to be an effective and resilient provider of affordable workspace. The studios support visiting and resident artists at the most fundamental level of development and production, maximising the time they can devote to their art practice. At rent levels half to one third of physically comparable space on the open market, RUA RED create a significant subsidy for art and artists. However, the accumulation of increasing utility costs (in some cases rises of 15%) and the current development and funding climate threaten a resilient and successful artist studio resource, which has contributed greatly to quality subsidised artist studios in South Dublin and attracted many artists out from the city of Dublin and facilitated artists nationally and internationally. RUA RED have applied to the Visual Artists' Workspace Scheme and if successful will implement additional measures in 2012.

We plan to:

- Under go a review of our studio policy, terms & conditions
- Continue a commitment to artists that studio rentals will remain affordable
- Continue to provide inclusive rentals (lighting, heating & rates)
- Continue to provide a reception service for resident artists
- Continue to provide low cost service & facilities to artists to produce work
- Introduce a technical supervision service for the visiting arts studio, project spaces and digital lab
- Extend our Professional Skills Programme for artists
- Increase opportunity for artists to experiment in the process/ production of their work through our residency programme and project spaces



2012

Priorities for 2012

1. Re-align and re-launch arts programme

- 8 Visual Arts exhibitions around the theme of 'Rediscovery of Wonder' the gallery programme will coincide with the Dublin Year of Science celebrations, and make use of new technology and the collaboration between science and art
- Research Residency
- Production Residencies
- Dance Artist Residency
- GLITCH Digital Arts Festival
- Venue partner as part of Photo Ireland Festival
- Ireland Funds Participate Programme (First year will focus on working with communities in Tallaght West)

2. Launch Artist Workspace Strategy

- To realise the potential of spaces and resources for visiting and resident artists, with focus on the MAC Lab, Project Space & Artist Studios
- Professional Development Workshops for Visual & New Media Artists

3. Continue to develop a long-term sustainability strategy

- To maximise independent revenue streams, identify new models of financing & develop fundraising & philanthropy strategy

4. Implement new Marketing & Audience Development Plan

- To seek out ways to expand and extend our audiences
- To improve on data collection, analysis and evaluation
- To exceed visitors expectations and customer care

5. Invest in the organisation's people by completing a process of Board & Staff Development