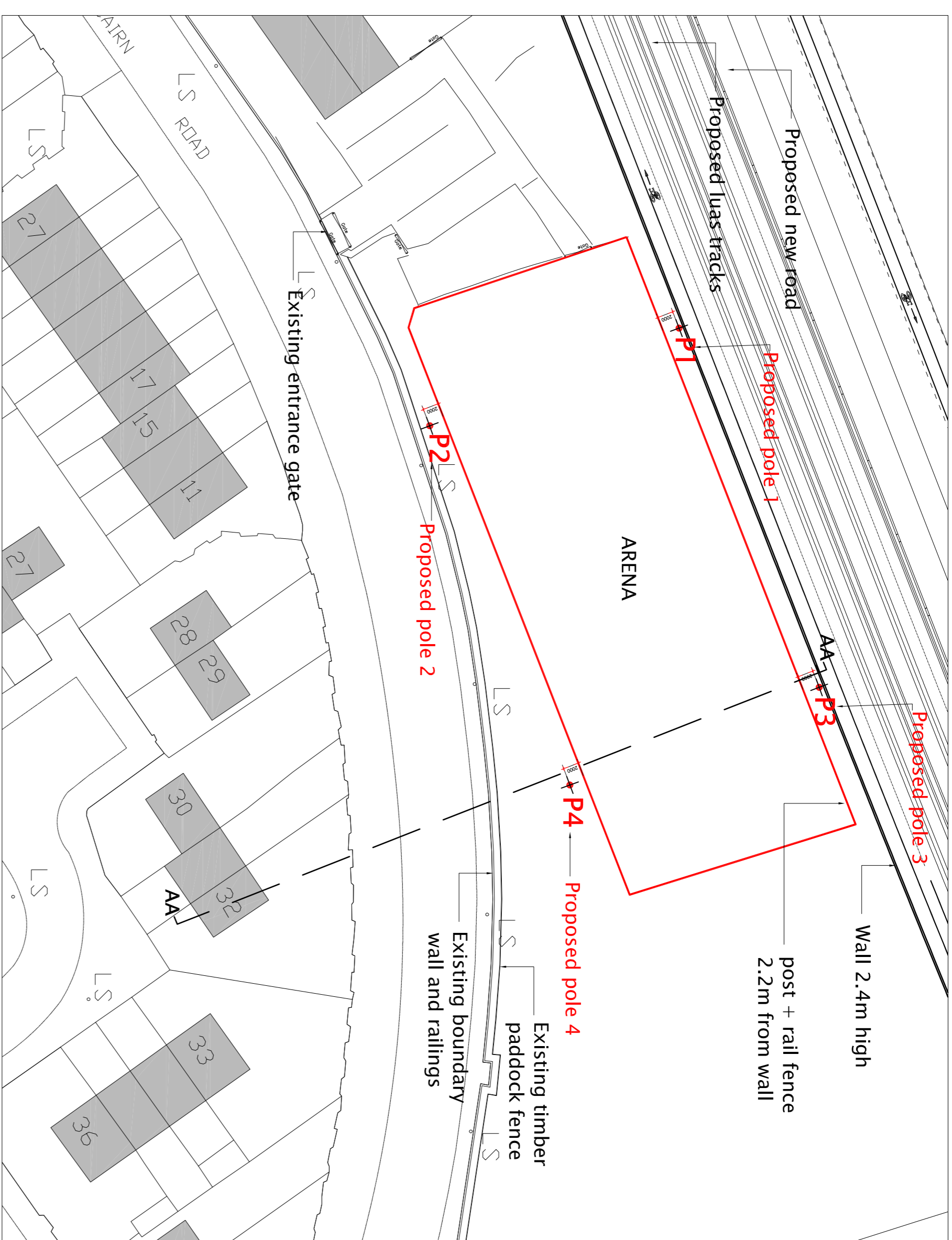
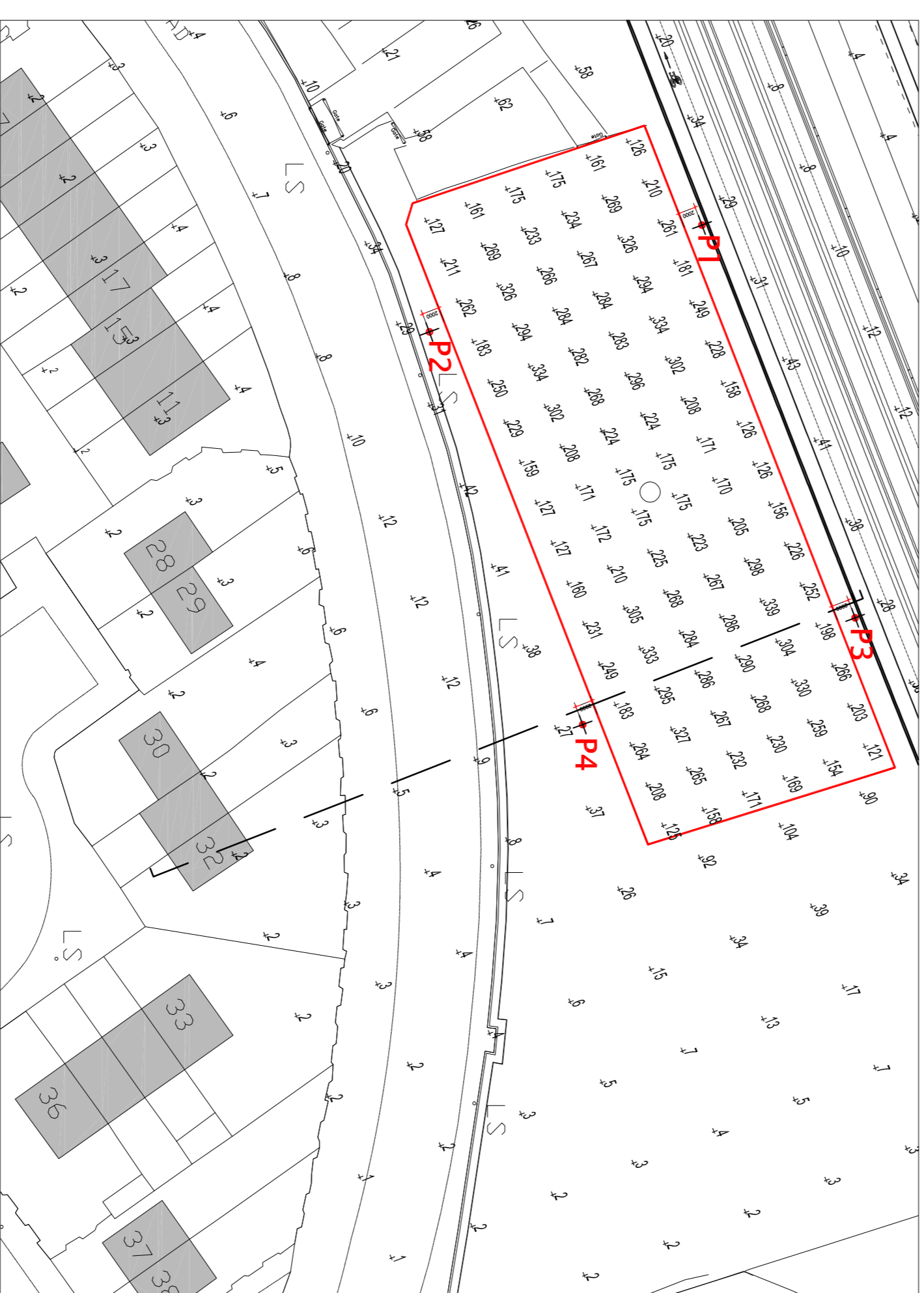


SITE LOCATION PLAN - OS REF 3389-09
SCALE = 1:2500



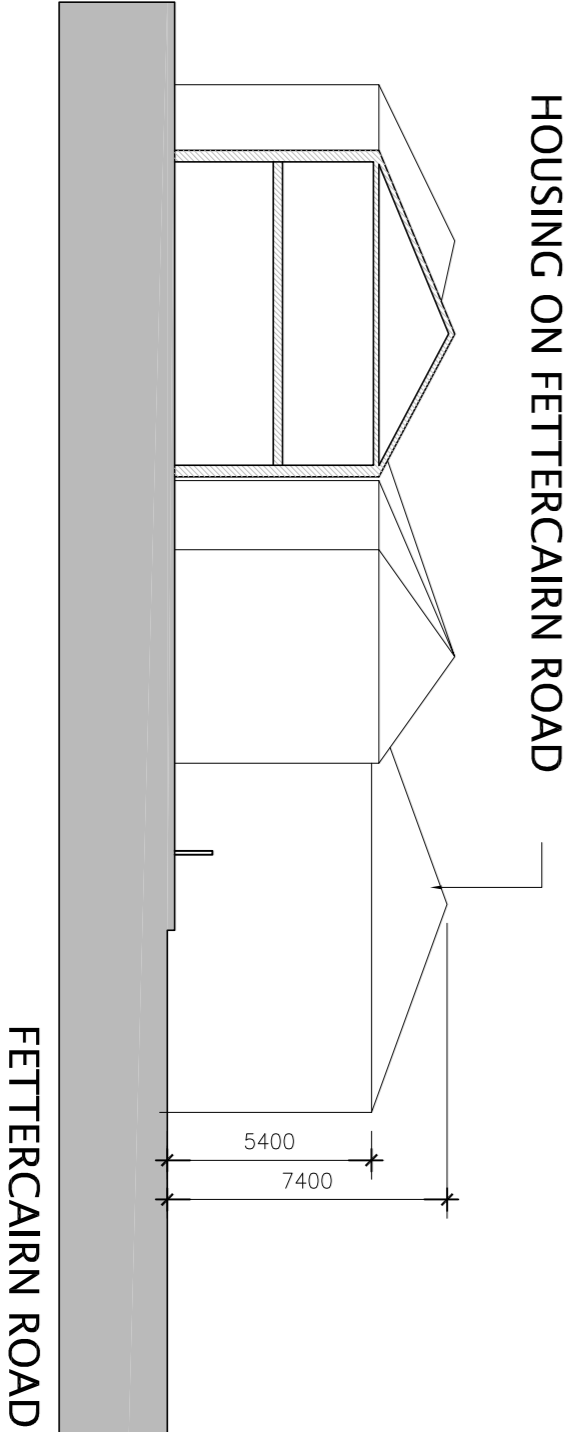
PROPOSED SITE LAYOUT PLAN
SCALE = 1:500



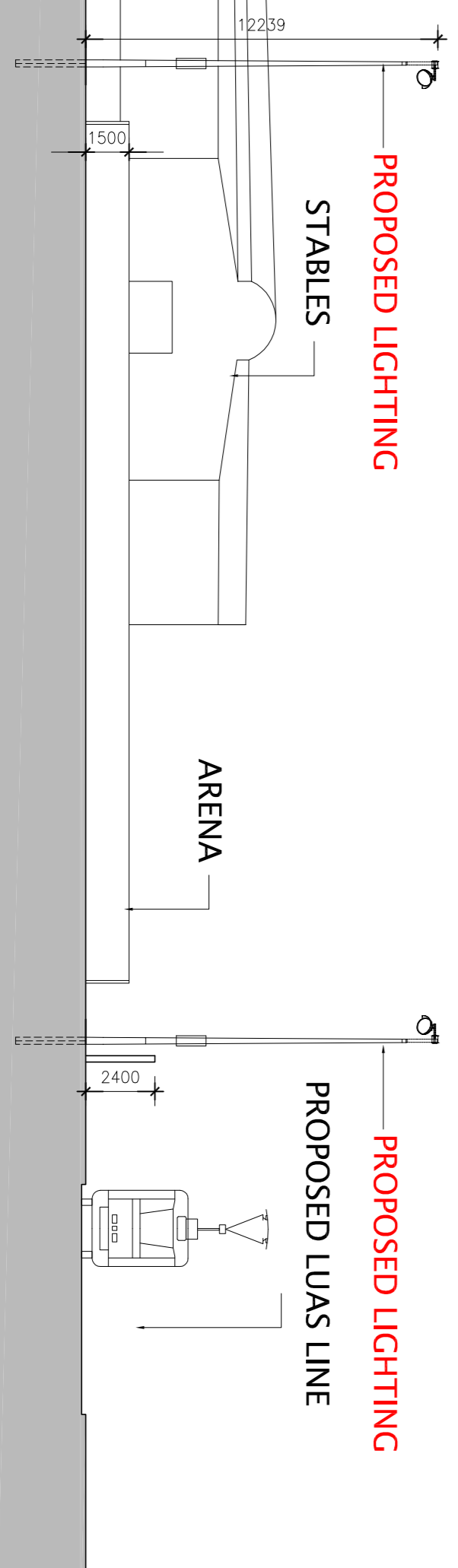
MAINTAINED ILLUMINATION HORIZONTAL LUX
SCALE = NTS



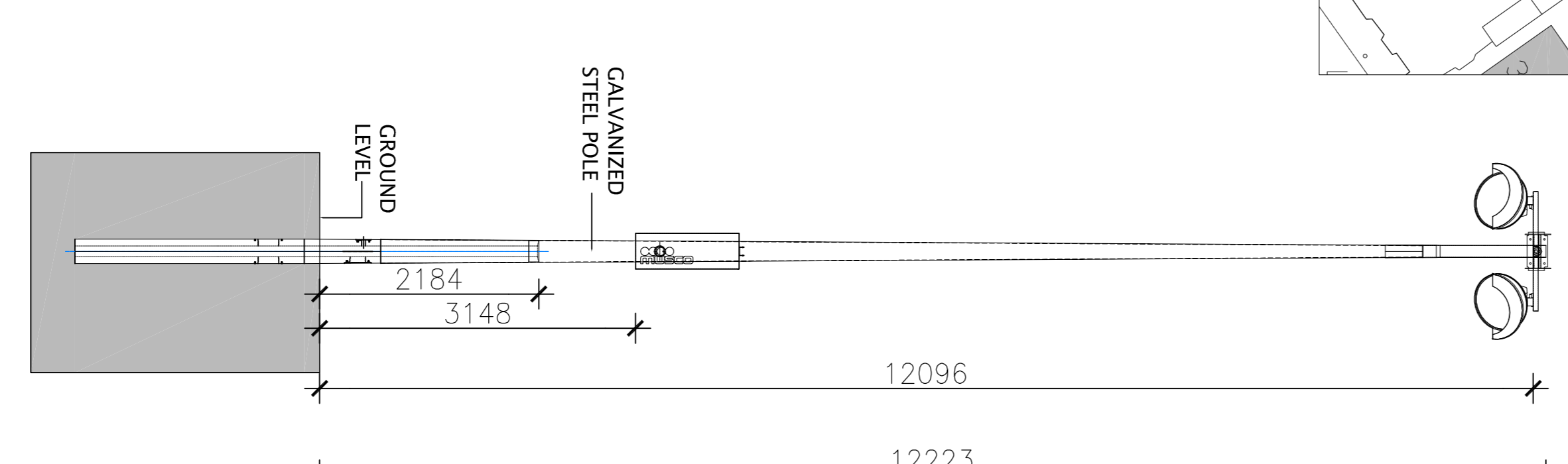
POSITION OF COLUMNS



PROPOSED SITE SECTION
SCALE = 1:200



PROPOSED LIGHTING



POLE ELEVATION
SCALE = 1:50

EQUIPMENT LIST FOR AREAS SHOWN									
QTY	LOCATION	ITEM	HEIGHT	WATTAGE	NO. OF LUMENAIRES	AVG. KVA	AVG. HOURS	AVG. LUMENS	AVG. ILLUMINATION
4	P1-P4	12.1m	12.1m	1000VA	8	8	5000	134,000	13.6
TOTALS					8	8	5000	134,000	13.6

Inside arena

50m Full Spill

Fettercairn Youth Horse Project
Dublin, Ireland
50m Full Spill
Grid Spacing = 10.0m x 10.0m
Values given at 1.0m above grade

Luminaire Type: Green Generation
Rated Lamp Life: 5,000 hours
Avg Lumens/Lamp: 134,000

CONSTANT ILLUMINATION HORIZONTAL LUX

No. of Target Points:	203	Entire Grid
Average:	12.99	
Minimum:	0.85	
Min/Avg:	0.09	
Max/Avg:	0.01	
UG (Adjacent Pk):	4.48	
CV:	1.58	
Average Lamp Tilt Factor:		1.000
Number of Luminaires:		8
Avg KW over 5,000 hours:		12.51
Max KW:		13.6

Outside arena

ILLUMINATION SUMMARY

Arena
Fettercairn Youth Horse Project
Dublin, Ireland

Arena
Size: 81m x 30m
Grid Spacing = 5.0m x 5.0m
Values given at 1.0m above grade

Luminaire Type: Green Generation
Rated Lamp Life: 5,000 hours
Avg Lumens/Lamp: 134,000

CONSTANT ILLUMINATION HORIZONTAL LUX

No. of Target Points:	96	Entire Grid
Average:	229.92	
Minimum:	339.02	
Maximum:	121.27	
Min/Avg:	0.58	
Max/Avg:	0.53	
UG (Adjacent Pk):	1.68	
CV:	0.26	
Average Lamp Tilt Factor:		1.000
Number of Luminaires:		8
Avg KW over 5,000 hours:		12.51
Max KW:		13.6

REVISION	NO.	DATE	NO.	DATE



South Dublin County Council
County Hall, Tallaght,
Dublin 24,
Tel: 01 414 9000

FETTERCAIRN YOUTH HORSE ARENA LIGHTING PROPOSAL

DRAWINGS
PART 8 DISPLAY

SCALE AS SHOWN	DRAWING NO.	REV.
ISSUED BY: LB	001_2010	-
DATE: 14th 2010		
CHECKED BY: DL		