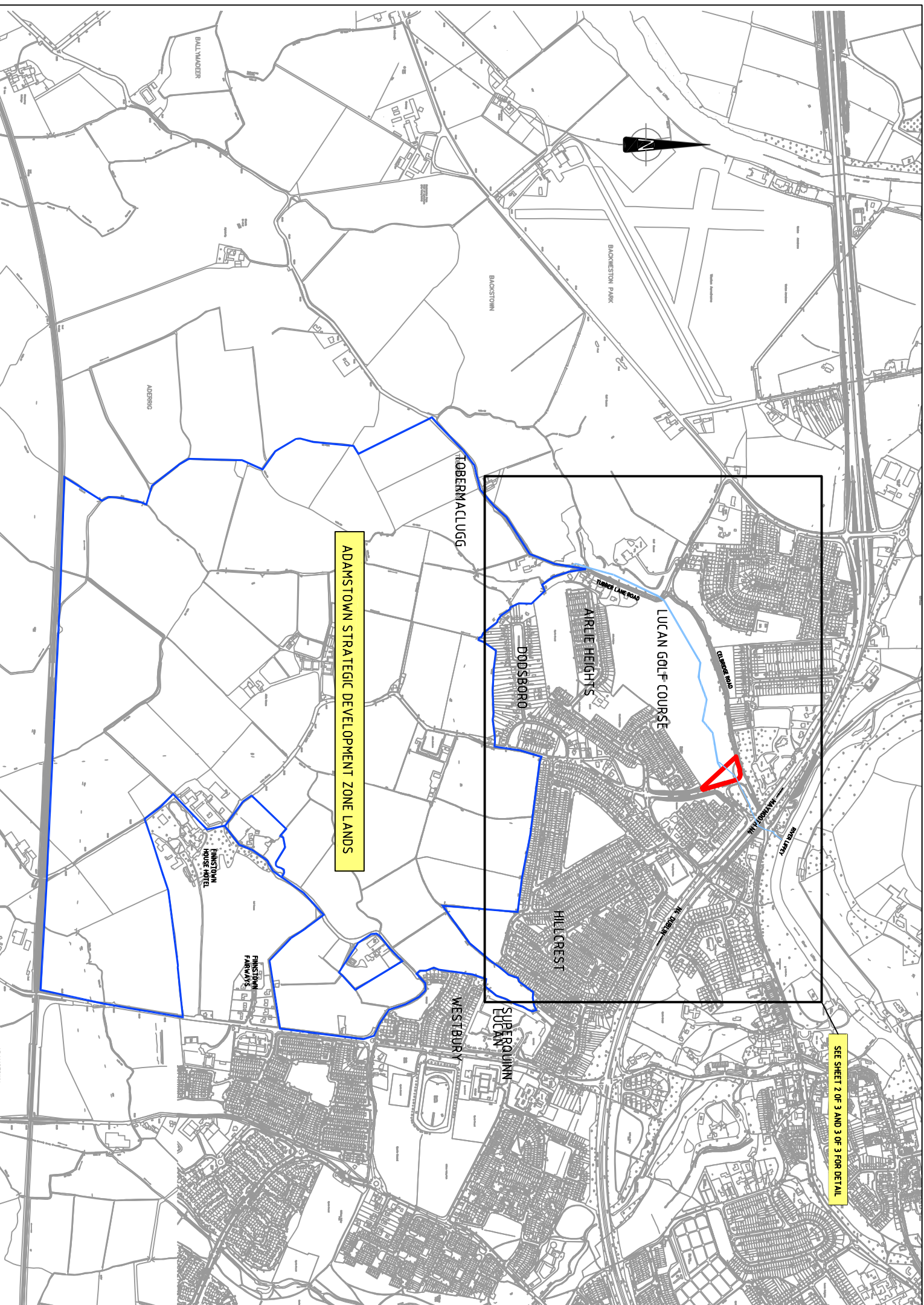


ADAMSTOWN STRATEGIC DEVELOPMENT ZONE OUTFALL FACILITIES FOR STORM WATER AND ASSOCIATED WORKS LOCATION PLAN



SEE SHEET 2 OF 3 AND 3 OF 3 FOR DETAIL

ADAMSTOWN STRATEGIC DEVELOPMENT ZONE LANDS

SITE LOCATION PLAN
SCALE 1:7500

Ordnance Survey Ireland
OSi Survey Licence No. EN002507
Copyright Government of Ireland

Chartridge
DEVELOPMENTS LIMITED

Planning and Development Act 2000 (Part 10) Planning and Development Regulations 2001 (Part 8)
Proposed Development by South Dublin County Council in Partnership with Chartridge Developments Limited

Pursuant to the above, notice is hereby given of the proposed scheme:
New stormwater outfall facility and associated works, to facilitate storm water drainage from the Adamstown SDZ on lands located between the Cabridge Road, Millstream Road and Lucan Golf Club, in the townland of Dodderough, Lucan Co. Dublin. The proposed works will also alleviate the occasional flooding problems in the environs of Tubber Lane.

The proposed works comprise:

- Construction of an Attenuation Pond of 5,000m³, and
- Associated works, fencing and landscaping.

Plans and particulars of the proposed development will be available for inspection from June 30th, 2008 to August 11th, 2008 (inclusive) at the following locations:
 South Dublin County Council Concessions, County Hall, Talight (9.00am - 5.00pm Monday - Thursday and 9.00am - 4.30pm on Friday)
 South Dublin County Council Concessions, Civic Centre, Cneallán (9.00am - 1.00pm and 2.00pm - 4.00pm Monday - Friday)
 Lucan Library, Superquinn Shopping Centre, Newcastle Road, Lucan (9.45am - 4.00pm Monday - Thursday and 9.45am - 4.30pm Friday and Saturday)
 Details of the proposed development will also be available on the Environmental Services section of the Council's website: www.southdublin.ie from June 30th, 2008.

Submissions or observations in relation to the proposed development, dealing with the proper planning and sustainable development of the area, in which the development would be situated, may be made in writing to:
 The Senior Executive Officer,
 Environmental Services Department,
 South Dublin County Council,
 County Hall, Talight,
 Dublin 24.

The closing date for receipt of submissions or observations is up to and including 5.00pm on Monday 11th August 2008.
www.southdublin.ie for all your information needs

LEGEND:

- ADAMSTOWN ASZD SHOWN THIS
- PART 8 BOUNDARY SHOWN THIS
- ASSOCIATED WORKS SHOWN THIS

PUBLIC DISPLAY

SHEET 1 OF 3

NOTES:-
1. ALL LINES RELATE TO MAIN ROAD ORDNANCE DATA.
2. FOR PLAN SECTIONS AND LANDSCAPING SEE SHEET 3 OF 3