

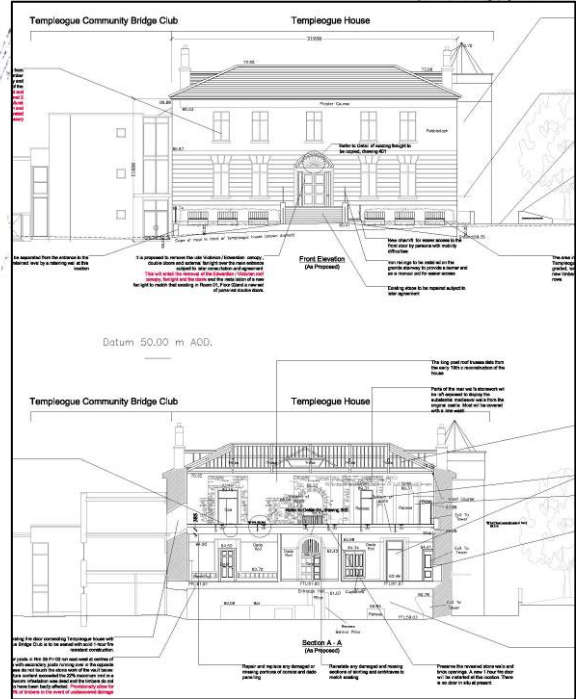
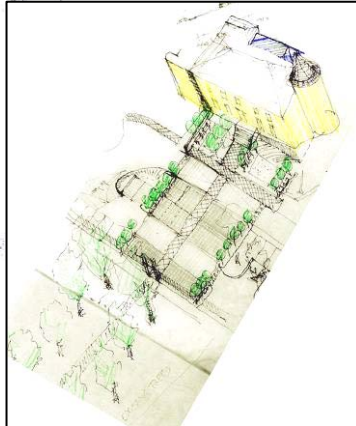
The restoration and renovation of Templeogue House

Templeogue House is a historic landmark structure in south county Dublin. It is a protected structure under the County Development Plan and a Recorded Monument Site.

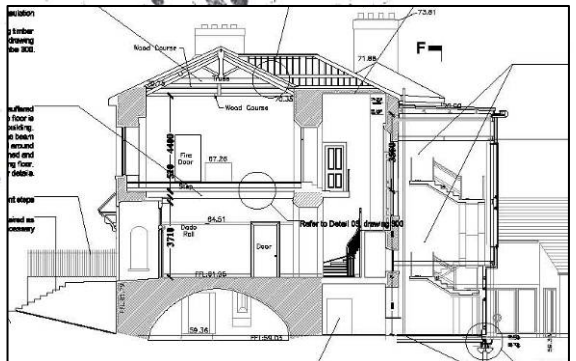
The strategic and historic power of Templeogue Castle was in its control of the essential water supply to part of the City its industries and the local manufacturers and merchants. The status of the estate was eroded by the evolution of government and city and the status of the estate gradually declined to that of country house.

The existing site is in effect a campus, the use of which is presently shared by Templeogue Community Bridge Club, South Dublin County Council and St. Michael's House. Housing of comparatively recent construction surrounds the site to the north and east. A part of the once famous landscaped gardens and hydraulic engineering works, a tree lined avenue and a stone arch remains to the south-west.

The current proposal to renovate the house will reinforce the community provision in South Dublin County Council by providing a facility for a range of activities including meeting, recitals, small conferences, community events and a focal point for inter-community activities. The protection of all existing fabric of the building and the establishment of a sustainable use of the building is the principle generator of the project.



The former car-park before works began



The restoration and renovation of Templeogue House



The upper room



A ceiling (1740's)



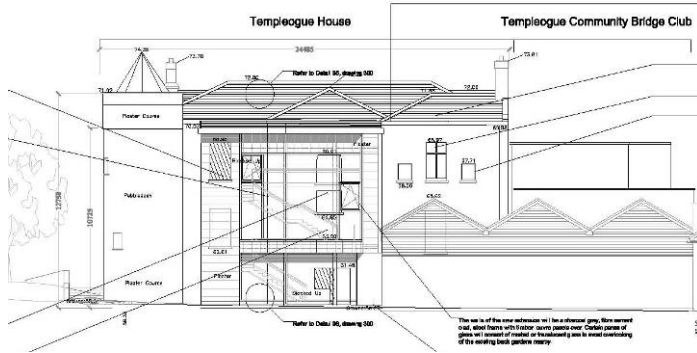
The tree-lined axis & new plaza



The necessary alterations to the car-park and the new plaza and landscape works were the subject of a Part 8 notification in June 2004 and have since been completed. The plaza reinstates the axial connection with the remaining landscaped gardens and provides safer and better access to St. Michael's House and the bridge club and the house.

The proposed works to the house include the installation of a new floor and repair & supporting of the mediaeval floor, the replacement of a Rococo ceiling, stabilisation of the 18th century structural timbers and repair works to the internal finishes. This part of the project will go to tender in July.

The proposed new stairwell and lift shaft will provide access for everybody, proper emergency escape facilities and will be an exhibition space. This will be constructed on a steel frame and will be finished with natural coloured fibre cement panels. The extension is another layer of incremental addition to the house which can be removed in the future with minimal damage to the house



The suspension and stabilisation of the mediaeval floor timbers

