

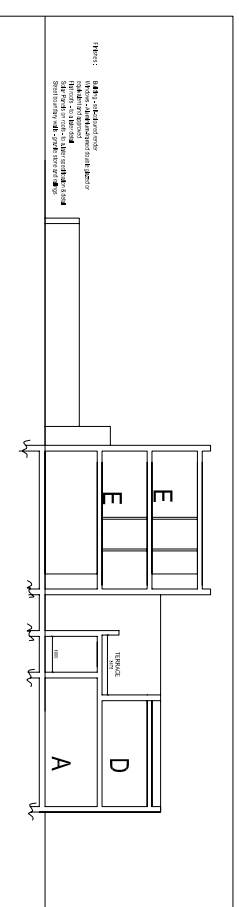
**PART 8
CONSULTATION PROCESS:**

Amendments/Clarifications -

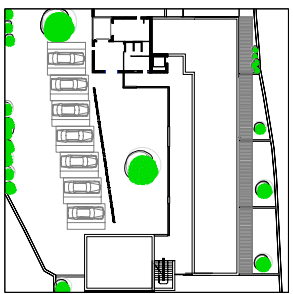
- 1) Correct dimension between rene of dwelling at 39 Castle Grove and single storey element of the proposal now shown on proposed site plan. (img 01)
- 2) Apartment 'C': possible arched opening or wall with door between kitchen and dining/living areas now indicated by dashed lines. (img 02)
- 3) Apartment 'C': Opaque glass or other similar will be detailed to north face of terrace for visual screening from adjacent property. (img 02)
- 4) Apartment 'D':
Fenestration to be detailed to north facade of apartments at first floor level to minimise potential for directly opposing windows at first floor level. (img 02)



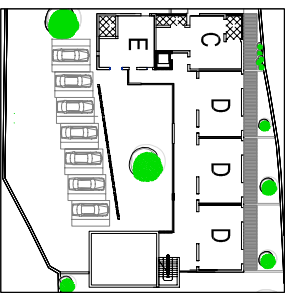
LONG SECTION THROUGH COURTYARD



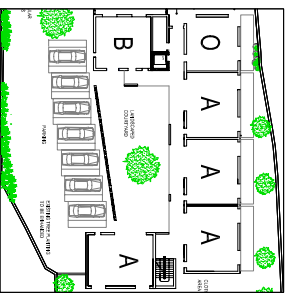
CROSS SECTION THROUGH COURTYARD



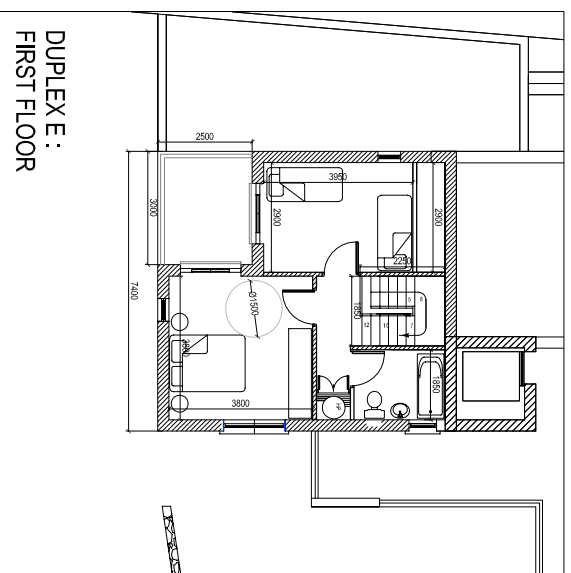
SECOND FLOOR



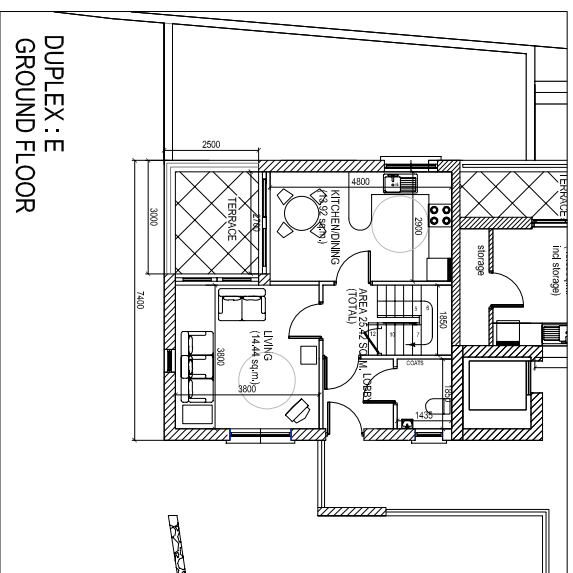
FIRST FLOOR



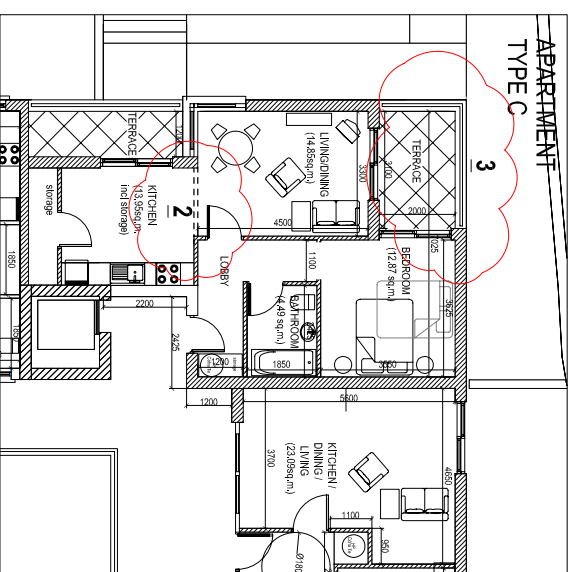
GROUND FLOOR



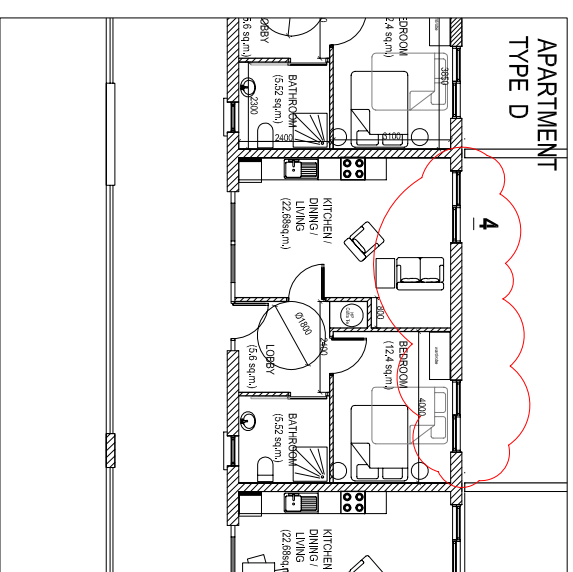
DUPLEX E:
FIRST FLOOR



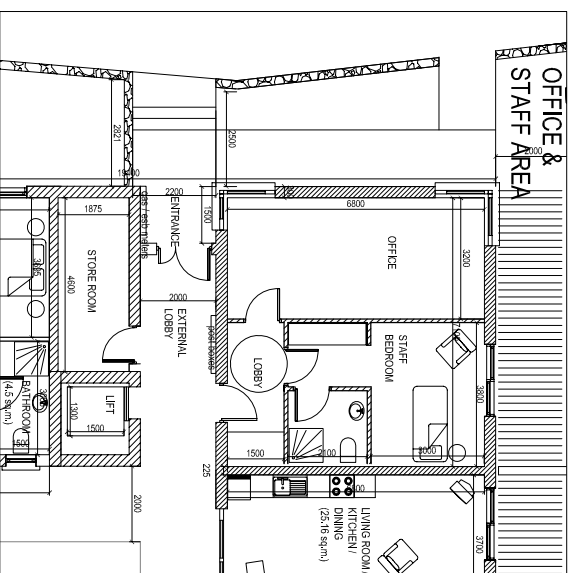
DUPLEX E:
GROUND FLOOR



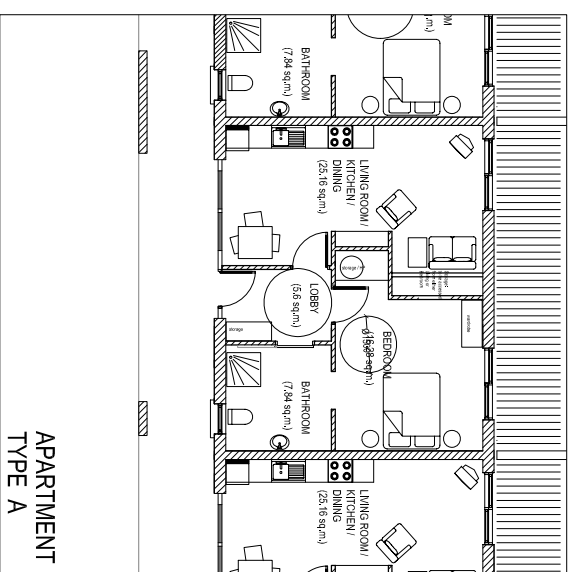
APARTMENT
TYPE C



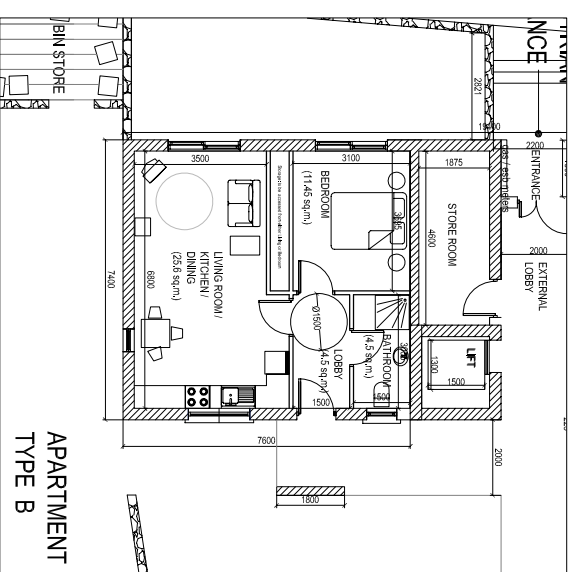
APARTMENT
TYPE D



OFFICE &
STAFF AREA



APARTMENT
TYPE A



APARTMENT
TYPE B



SOUTH DUBLIN COUNTY COUNCIL

ARCHITECTS DEPARTMENT
TOWN CENTRE, TALLAGHT
DUBLIN 24, TEL: 01-414 9000

COUNTY ARCHITECT
EÓIGE CONROY B.Arch., M.Arch.Sc., F.R.A.I.

SENIOR ARCHITECT

Aine Golden

PROJECT ARCHITECT

Sharon O'Grady

PROJECT TITLE
VALHALLA - SHELTERED HOUSING

DRAWING TITLE
PART 8 PRESENTATION:
DWELLING TYPE PLANS

DRAWN
S.O.G

CHECKED

SCALE
1/200 & 1/100 @ A1

DATE
20/04/2007

DRAWING NUMBER
06007HSCUP8-02

REV
A

[21-05-2007]